

# Modicon 140 DRC 830 00

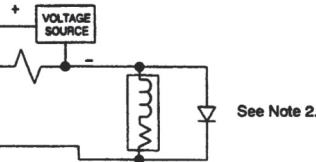
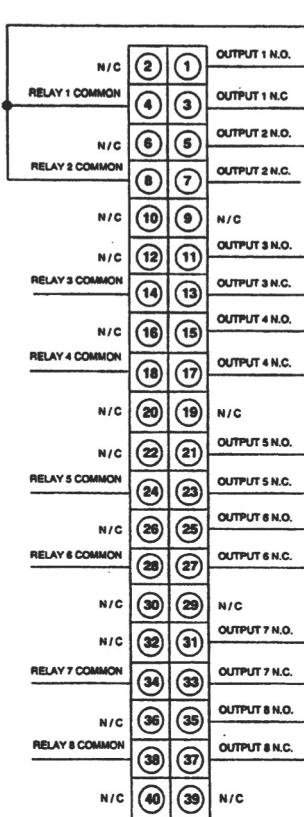
## Normally Open/Normally Closed

### Relay Output Module

Publication # 043504350 Version 5.0



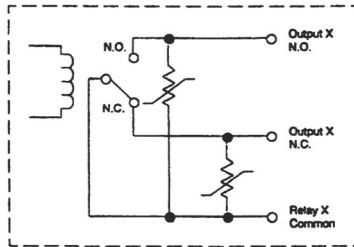
**Topology** 8 NO/NC relay output pairs  
**Bus Current Required** 560 mA  
**Operating Voltage** 20 ... 250 VAC, 5 ... 150 VDC  
**Connector** Modicon P/N 140 XTS 002 00



**NOTE 1:** When switching DC voltages, it is recommended that the source be connected to the common pin and the load be connected to the N.O. or N.C. contact.

**NOTE 2:** For 125 Vdc inductive loads, external clamping is recommended to extend relay contact life. (1N 4004 or equivalent).

**NOTE 3:** N / C = Not Connected  
 N.O. = Normally Open  
 N.C. = Normally Closed



One of Eight Typical

For complete instructions regarding this module, including specifications, please obtain a copy of Modicon's *Quantum Automation Series Hardware Reference Guide* (840 USE 100 00) from your distributor or local sales office.

Quantum Automation Series equipment is protected by U.S. Patent number 5,302,136, and by European Patent number 93202982.0--.



Printed in

# Modicon

## 140 DRC 830 00 Module de Sortie de Relais

### Normalement Ouvert/Normalement Ferme

Publication # 043504350 Version 5.0

**Topologie**

**Courant de Bus Requis**

**Tension de Fonctionnement**

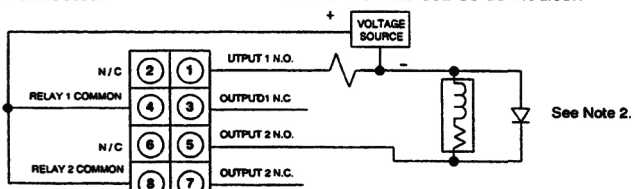
**Connecteur**

8 sorties de relais N.O./N.F.

560 mA

20 ... 250 VCA, 5 ... 150 VCC

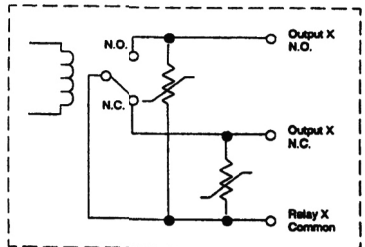
Pièce 140 XTS 002 00 de Modicon



**NOTE 1:** When switching DC voltages, it is recommended that the source be connected to the common pin and the load be connected to the N.O. or N.C. contact.

**NOTE 2:** For 125 Vdc inductive loads, external clamping is recommended to extend relay contact life. (1N 4004 or equivalent).

**NOTE 3:** N / C = Non Connecté  
N.O. = Normalement Ouvert  
N.F. = Normalement Ferme



One of Eight Typical

Pour des instructions et des spécifications complètes sur ce module, se procurer une copie du *Guide de Référence du Matériel de Quantum Automation Series* (840 USE 100 01) chez votre distributeur.

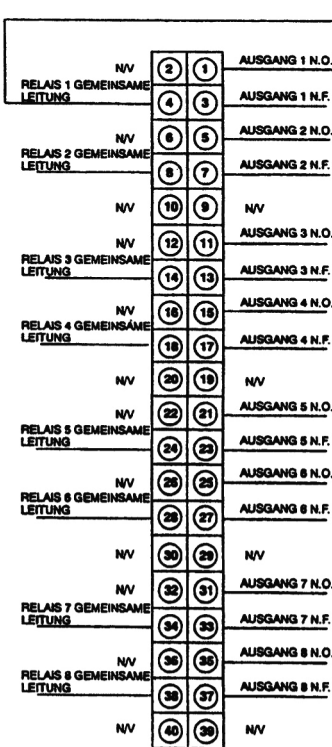
# Modicon

## 140 DRC 830 00

### Normalerweise offenes/Normalerweise geschlossenes Relaisausgangsmodul

Veröffentlichung Nr. 043504350 Version 5.0

**Topologie** 8 normalerweise offene/normalerweise geschlossene Relaisausgangspaare  
**Erforderlicher Busstrom** 560 mA  
**Betriebsspannung** 20 ... 250 Volt Wechselstrom, 5 ... 150 Volt Gleichstrom  
**Anschlußstück** Modicon Teil Nr. 140 XTS 002 00



**Anmerkung 1:** Beim Umschalten von Gleichstromspannungen wird empfohlen, daß die Quelle mit dem gemeinsam verwendeten Stift verbunden wird, und daß die Ladung mit dem N.O. oder N.C.-Kontakt verbunden wird.

**Anmerkung 2:** N/V = nicht verbunden  
 N.O. = normalerweise offen  
 N.C. = normalerweise geschlossen

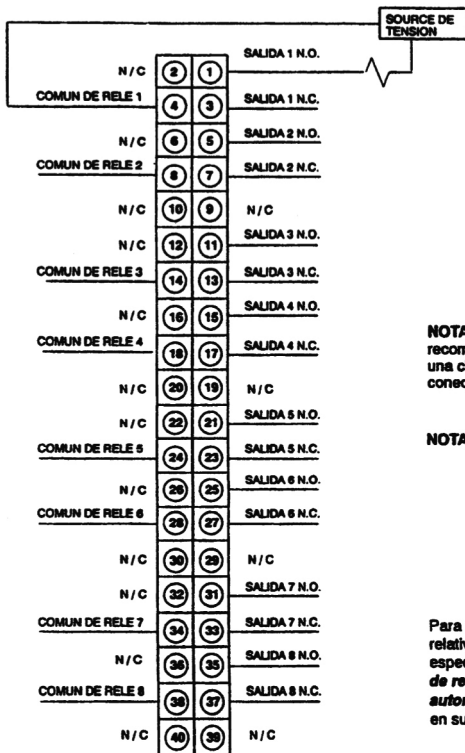
Holen Sie sich für vollständige Anweisungen hinsichtlich dieses Moduls, einschließlich technischer Daten, eine Kopie des *Quantum Automation Series Hardwarehandbuchs* (840 USE 100 02) von Ihrem Händler.

# Modicon 140 DRC 830 00 Módulo de salida de relé normalmente abierto/normalmente cerrado

Publicación No. 043504350 Version 5.0

Topología  
Corriente de bus requerida  
Voltaje de operación  
Conector

8 pares de relés normalmente abiertos/normalmente cerrados  
560 mA  
20 ... 250 V CA, 5 ... 150 V CC  
Modicon P/N 140 XTS 002 00



**NOTA 1:** Al conmutar voltajes de CC, se recomienda que la fuente esté conectada a una clavija común y que la carga esté conectada al contacto N.O. o N.C.

**NOTA 2:** N/C = No conectado  
N.O. = Normalmente abierto  
N.C. = Normalmente cerrado

Para obtener instrucciones más completas relativas a este módulo, incluyendo las especificaciones, consiga una copia de la *Guía de referencia de hardware de la serie de automatización Quantum (840 USE 100 03)* en su distribuidor.