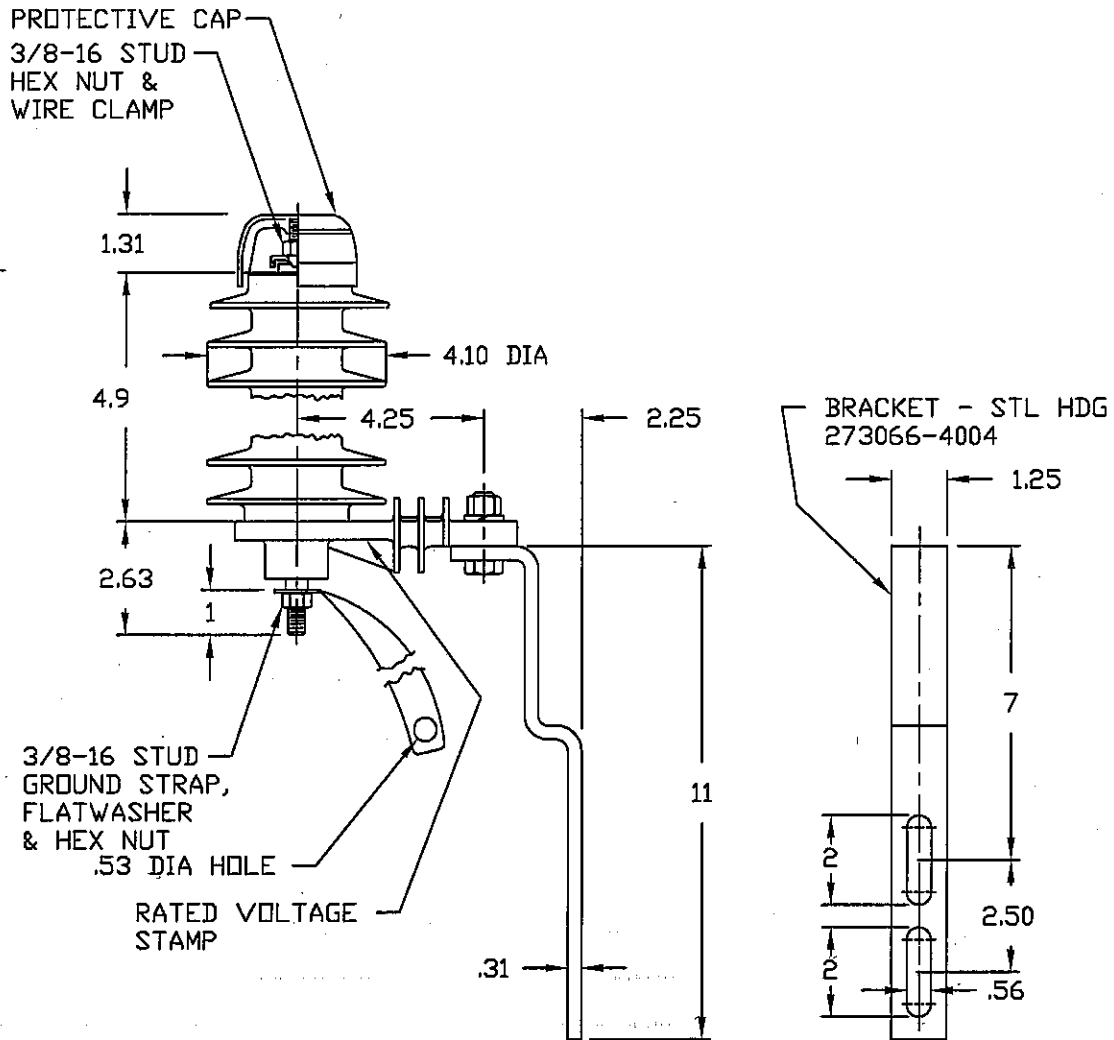


NOTES:

1. DIMENSIONS SUBJECT TO +/- 3% TOLERANCE
2. LEAKAGE DISTANCE (Inches) - 14.4
3. ALTITUDE 0-12000 FT. ABOVE SEA LEVEL
4. WEIGHT OF UNIT INCLUDING HARDWARE - 6.4 LB.
5. MAXIMUM CONTINUOUS LINE-TO-GROUND OPERATING VOLTAGE 7.65 kV MCOV
6. DUTY CYCLE VOLTAGE RATING 9 kV RMS.



.5 μ SEC IR kV	10kA	500 A SWITCHING SURGE IR kV	MAXIMUM 8/20 DISCHARGE VOLTAGE - kV AT					
			1.5 kA	3.0 kA	5 kA	10 kA	20 kA	40 kA
31.2		22.4	23.3	24.9	26.4	29	32.6	38.8

DISTRIBUTION CLASS SURGE ARRESTER								
			TITLE PDV-100 OPTIMA 7.65 KV MCOV					
	CONFIDENTIAL: THIS DRAWING AND ITS CONTENTS ARE CONFIDENTIAL AND THE EXCLUSIVE PROPERTY OF HUBBELL POWER SYSTEMS. NO PUBLICATION, DISTRIBUTION OR COPIES MAY BE MADE WITHOUT THE WRITTEN CONSENT OF HUBBELL POWER SYSTEMS. HUBBELL POWER SYSTEMS UNPUBLISHED ALL RIGHTS RESERVED UNDER THE COPYRIGHT LAWS.		SIZE S	DWG NO. ALES7XXX	CAT / PART / ASSY NO. 213708-7333	REV 7		
REV DATE 10/24/07			DO NOT SCALE THIS DRAWING	DRN BY ENG124	DATE 06/17/00	SHEET 1 OF 1		