

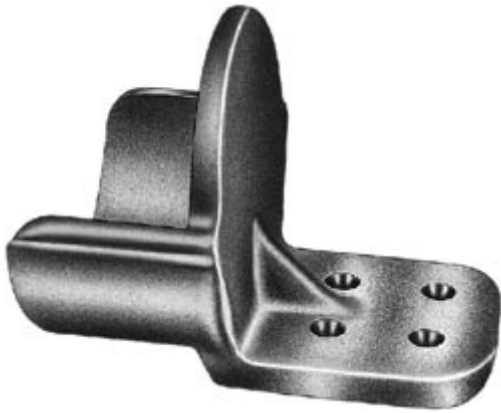


[Catalog Home](#)

Product Datasheet


ANDERSON FARGO

WSTF20B2 -- Terminal, Aluminum Weldment



Terminal, Aluminum Weldment, Tube to Flat, tube size 2 IPS Pad: 2 hole, 2 in

Product Specifications

<p>Family Image</p>	 <p>Terminals</p>
<p>Terminals</p>	 <p>WSTF Series Tube to Flat Aluminum Weldment Terminals</p>
<p>PDF Catalog Page</p>	<p>Click HERE to view the web page.</p>
<p>Pad Holes</p>	<p>2</p>
<p>Pad Width</p>	<p>2 in</p>
<p>Pad Position</p>	<p>Sideformed</p>
<p>Dimension A</p>	<p>3.25 in (82.6 mm)</p>
<p>Dimension B</p>	<p>3.50 in (88.9 mm)</p>
<p>Dimension C</p>	<p>1.75 in (44.9 mm)</p>
<p>Dimension K</p>	<p>0.63 in (15.9 mm)</p>
<p>Dimension L</p>	<p>7.13 in (181.0 mm)</p>
<p>Dimension T</p>	<p>0.44 in (11.1 mm)</p>
<p>Dimension W</p>	<p>2 in (50.8 mm)</p>

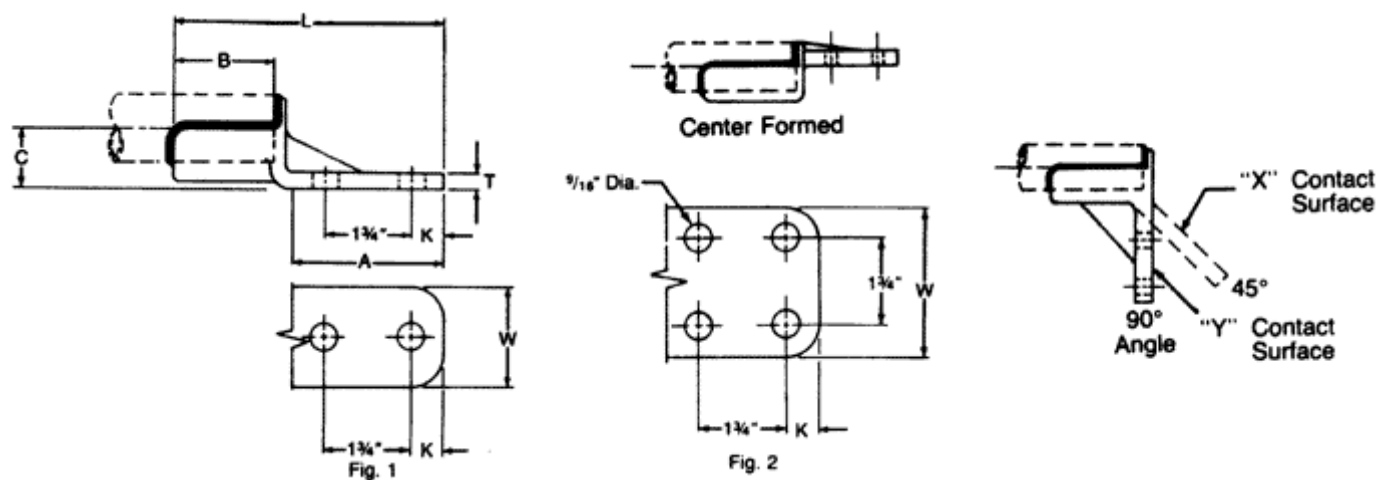
Material Type	Non-Standard
UPC Code	09635934193
Standard Package	1
Standard Package Unit	Each
Min Order Qty	1
Weight / Ea.	1.078 lbs

Notes

45 or 90 degree angle terminal may be specified by adding X45 or Y90 suffix to catalog number.

Compressed Product Number

WSTF20B2



[Catalog Home](#)



[Warranty Info](#) | [Trademarks](#) | [Terms of Use](#)

All contents Copyright © 2007 Hubbell Power Systems, Inc. All rights reserved.

NOTE: Because Hubbell has a policy of continuous product improvement, we reserve the right to change design and specifications without notice.