

Hubbell Power Systems, Inc. presents the

# Trinetics® Metal Sectionalizing Cabinets and Primary Pedestals

Top Hinge Enclosures & Accessories



# TABLE OF CONTENTS

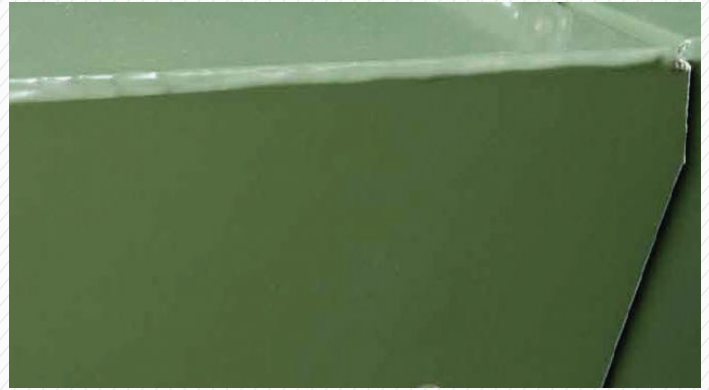
Benefits of Metal Sectionalizing Enclosures	Page 1
300 Series Sectionalizing Enclosures	Pages 2 - 4
300 Series Ground Sleeves	Pages 5 & 6
300 Series Risers	Page 7
200 Series Primary Pedestals	Page 8
Hubbell Deadbreak & Loadbreak Junctions	Page 9

# Benefits of Metal Sectionalizing Enclosures with Top Quality Construction

The integrity of Trinetics' metal sectionalizing enclosures are superior and meet key ANSI C57.12.28 standards for pad-mount equipment enclosure integrity, which is considered the reference for the electrical industry. Trinetics metal sectionalizing enclosures meet the ANSI standard in at least three areas related to durability and critical tamper-proof characteristics. These three areas are:

- 4.1.7 - Locking/latching devices standard, which states in part: "The latching devices shall be designed and constructed of such material so as to resist breaking or bending."
- 4.3.2 - Pry tests standard, which involves using a specified prying tool on "all joints, crevices, hinges, locking means, and other objects that exist between the enclosure components ..."
- 4.3.4 - Wire probe tests standard, which involves using a 14 AWG solid copper wire to attempt to penetrate "crevices and joints" in the enclosure. This standard states in part: "This test is passed if an inspection determines the probing wire either has not entered the enclosure, or if visible, the probing wire is restricted by a barrier from intrusion into the interior."

## All-welded Top Quality Construction



*Fully welded seams prohibit insertion of foreign materials.*

## Heavy-gauge Metal Shell



*Tight joint inhibits attempts to pry or penetrate cabinet. Inset shows special tamperproof channels at inside seams for extra security from intrusion. Hardware and hinges are of heavy-duty non-ferrous metal.*

## Robust Locking Mechanism



*Stainless steel penta-head bolt standard on all models. Thick metal plate and layered locking arrangement resists prying.*

## 300 Series Metal Sectionalizing Cabinets

Trinetics' metal sectionalizing enclosures provide a low-cost, safe, aesthetically pleasing means of providing a sectionalizing and tap point for underground distribution systems. Available in various sizes for use on single and three-phase systems rated 15kV through 35kV, in 200A or 600A.

In addition to a wide range of standard sizes in mild steel, custom and non-standard size enclosures and colors are available. Also available in mild steel with zinc rich primer, aluminum or stainless steel for various environment conditions. Contact you local Trinetics sales representative for more details.

**Top-hinge design for easy access** to all electrical components.

**All-welded** construction.

**Stainless steel penta-head** bolt with padlock provision standard on all models for tamper resistance. Two pentahead bolts standard on larger enclosures for added security.

**Light gray junction mounting bars** with welded parking stands, for high visibility.

**Wind stop is included** for operator safety.

**All stainless steel hardware** and hinges for strength and durability.

**Stainless steel lifting provisions** for ease of installation.

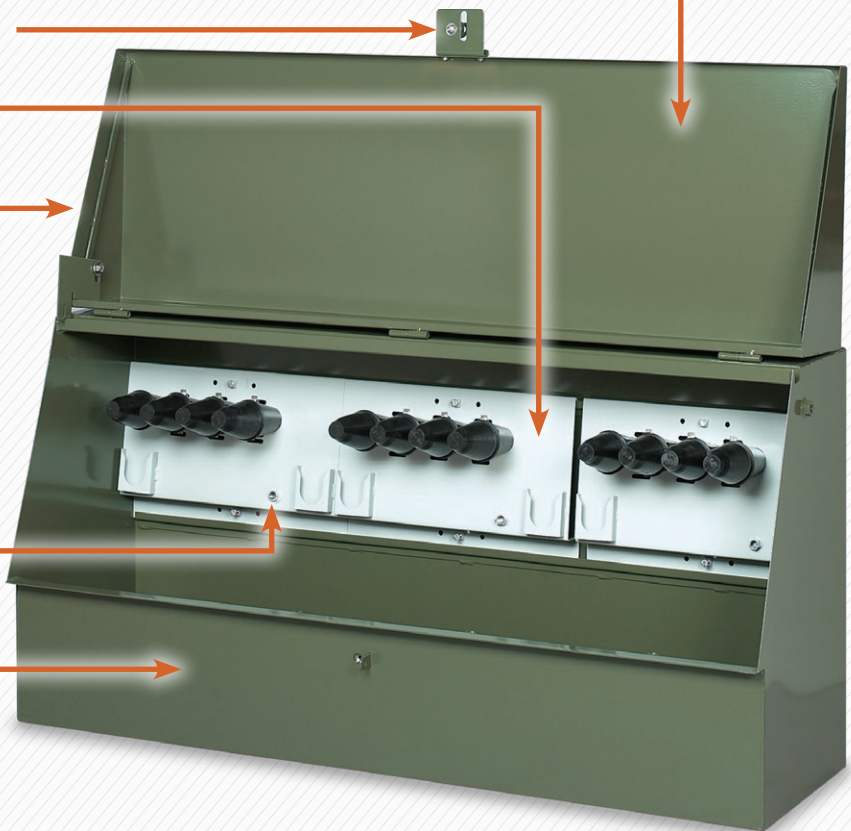
**Ground nuts** conveniently located on mounting bar and on the enclosure back wall for concentric neutrals.

**Constructed of sturdy 14 or 12 gauge mild steel** and .09" or .125" aluminum as standard. Mild steel with zinc rich primer, or stainless steel also available.

**Durable powder paint finish** exceeds ANSI standards; Munsell green (7GY 3.29/1.5) to blend with surroundings. Other colors available upon request.

**Meets ANSI C57.12.28 standards** for tamperproof and finish characteristics.

**RUS listed.**



**NOTE:**

Optional junction modules sold separately unless requested to be installed inside the sectionalizing enclosure. All details to be provided during Request for Quote (RFQ) process.

# Sectionalizing Cabinet Catalog Numbering

**CC360-18 TH (R) - SS**

1 Material Thickness	2 Height	3 Width	4 Depth	5 TH Enclosure	6 Sill Type	7 Material Type
CC = 12 ga (steel)	3 = 30" tall (standard)	60 = 60" wide <sup>1</sup>	18 = 18" deep <sup>2</sup>	TH = Top Hinge	(R) = Recessed (standard)	(blank) = Mild steel (MS)
CW = 14 ga (steel)					blank = Pocket	-AL = Aluminum
CC = .125" (aluminum)						-SS = Stainless steel
CW = .090" (aluminum)						-Z = MS w/ Zinc-rich primer

Notes:

1. Common widths 26", 30", 36", 48", 60", 66", 78", 84" (26", 30", 36" are single phase) (48" & above are three phase)
2. Common depths 18", 22", 24", 30"

## Catalog Number Examples:

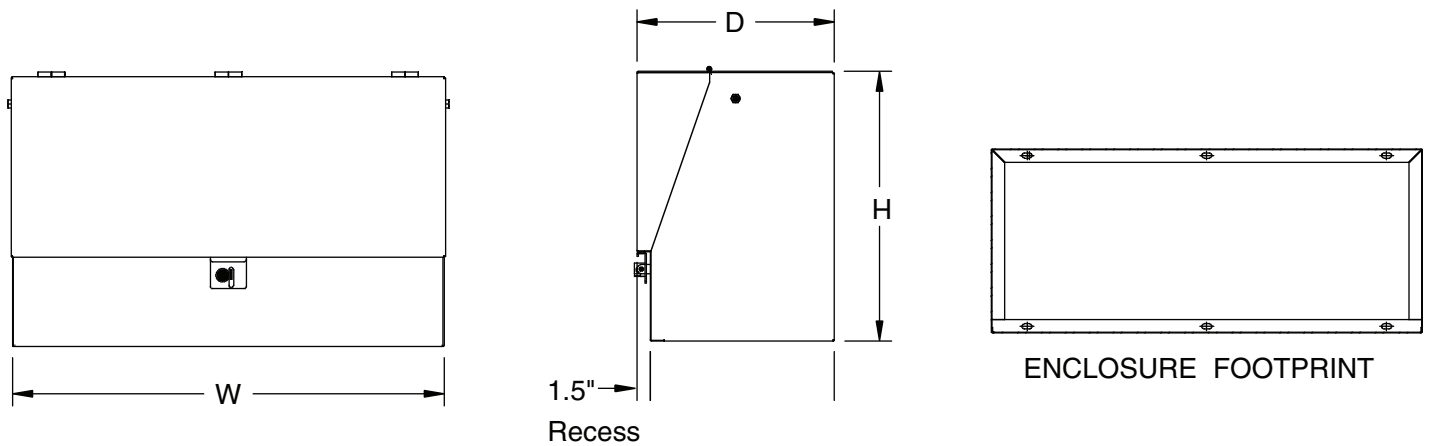
For Aluminum enclosures, put "-AL" after the catalog number, e.g. "CW330-18TH(R)-AL".

For Stainless Steel enclosures, put "-SS" after the catalog number, e.g. "CW330-18TH(R)-SS".

For mild-steel enclosures, leave blank after the (R), eg. "CW330-18TH (R)".

## AVAILABLE OPTIONS:

- Standard 2, 3, or 4-point junction modules
- Hubbell TapMaster multi-point junctions
- Multiple parking stand configurations
- Ground sleeves in various heights
- Risers for additional height or cable clearance
- Ground lugs or bus (bar, rod, or wire)
- Warning, danger, or custom decals
- Hold-down cleats for concrete mounting
- Custom junction mounting provisions
- Multiple colors to blend with various surroundings
- Viewing window for fault indicator
- Louvers for ventilation
- Zinc-rich primer for corrosion protection



### 300 Series Metal Enclosures Selection

Max # of junction interface points per phase					No. of parking stand per phase	Height (in)	Width (in)	Depth (in)	Steel			Aluminum		
200A		600A		Gauge					Catalog No. (mild steel)	Part Number	Thickness	Catalog No. (aluminum)	Part Number	
15 kV	25 kV	15/25 kV	35 kV											
4	4	—	—	2	30	26	18	14	CW326-18TH (R) Standard	63388000	.090"	CW326-18TH (R)-AL Standard	63294301	
4	4	—	—	2	30	30	18	14	CW330-18TH (R) Standard	63388006	.090"	CW330-18TH (R)-AL Standard	63294302	
4	4	—	—	2	30	30	22	12	CC330-22TH (R) Standard	63388036	.125"	CC330-18TH (R)-AL Standard	63294303	
4	4	—	—	2	30	36	22	12	CC336-22TH (R) Standard	63388071	.125"	CC330-22TH (R)-AL Standard	63294336	
4	3	2	—	1	30	48	18	14	CW348-18TH (R) Standard	63388003	.090"	CW348-18TH (R)-AL Standard	63294305	
4	3	2	—	1	30	48	22	12	CC348-22TH (R) Standard	63388034	—	—		
4	3	2	2	1	30	48	24	12	CC348-24TH (R) Standard	63388046	—	—		
4	3	—	—	2	30	60	18	14	CW360-18TH (R) Standard	63388001	.090"	CW360-18TH (R)-AL Standard	63294307	
4	3	—	—	2	30	60	18	12	CC360-18TH (R) Standard	63388010	.125"	CC360-18TH (R)-AL Standard	63294308	
4	3	—	—	2	30	60	22	12	CC360-22TH (R) Standard	63388005	—	—		
4	3	—	—	2	30	60	30	12	CC360-30TH (R) Standard	63388056	—	—		
4	4	4	4	1	30	66	22	12	CC366-22TH (R) Standard	63388008	.125"	CC366-22TH (R)-AL Standard	63294310	
4	4	4	4	1	30	78	22	12	CC378-22TH (R) Standard	63388011	.125"	CC378-22TH (R)-AL Standard	63294311	
4	4	4	4	1	30	84	22	12	CC384-22TH (R) Standard	63388012	.125"	CC384-22TH (R)-AL Standard	63294312	

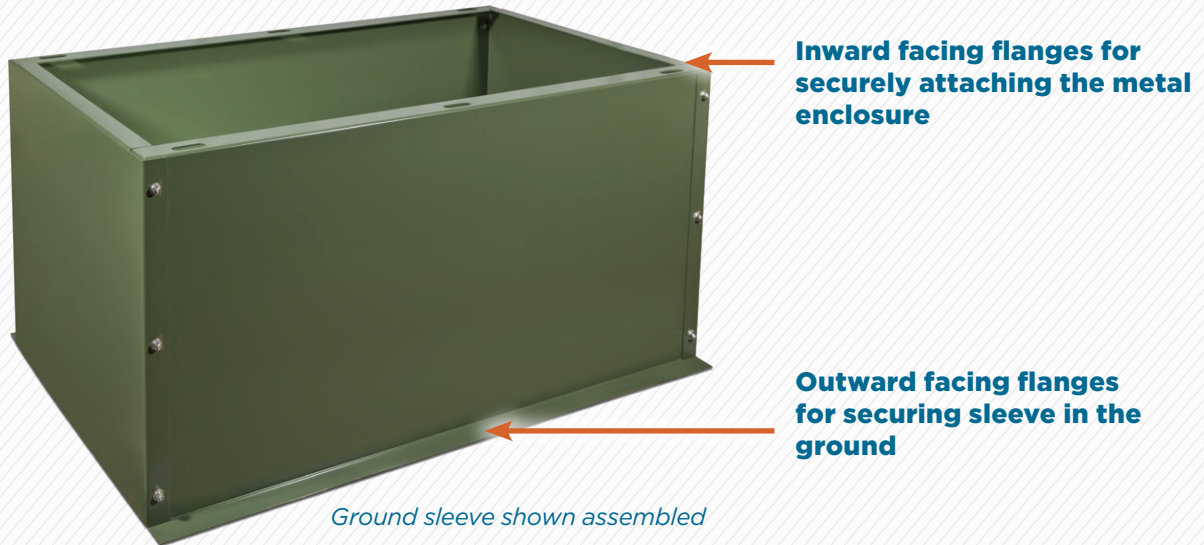
**NOTES:**

1. Model numbers with "CC" are constructed of 12 gauge steel (0.125" thick AL) and "CW" models are constructed of 14 gauge steel (0.090" thick)
2. For Stainless Steel enclosures, put "-SS" after the catalog number, e.g. "CW330-18TH-(R)-SS".
3. For Aluminum enclosures, put "-AL" after the catalog number, e.g. "CW330-18TH-(R)-AL".
4. For 35kV junctions or multipoint junctions, custom and non-standard size enclosures, or non-standard colors, please contact your Hubbell territory manager or customer service representative.
5. Enclosures with more than 2 parking stands per phase available upon request. Contact your local Hubbell sales representative for more details.
6. Junction compatibility shown above is for Hubbell products. If using other manufacturer, please consult sales representative for compatibility.
7. Enclosures from 26 inch to 36 inch wide are for single phase applications and enclosure from 48 inch to 84 inch wide are for 3-phase applications. Enclosures wider than 84 inches also available upon request.

# 300 Series Ground Sleeves

Hubbell’s ground Sleeves are designed to be directly buried in the ground, providing a convenient and safe space for additional cable. They also securely anchor the metal sectionalizing cabinet without the need for base pads. Ground sleeves come in mild steel and stainless steel. Standard size are 12”, 18”, & 24” in height. Ground sleeves come unassembled, assembled and ready for end user to attach to the sectionalizing enclosure (shown below), or pre-installed to the selected sectionalizing enclosure.

NOTE: Fiberglass sleeves available upon request. Contact your Hubbell customer service representative for additional information.



## Ground Sleeves Catalog Numbering

**CC360-18-18 (R)**

1	2	3	4	5	6
Material thickness	Enclosure Height	Width	Height of ground sleeve	Enclosure Depth	Sill Type
For metal:	N/A for ground sleeves	match width of enclosure	18 = 18" high	match depth of enclosure	(R) = Recessed (standard)
CC = 12 ga (Thicker)			other options: 12", 18", 24"		blank = pocket
CH = 14 ga (Thinner)					

For stainless steel add "-SS" after the catalog number, e.g. CC360-18-18 (R)-SS

## 300 Series Ground Sleeve Selection

Enclosure Catalog No. (mild steel)	Height (in)	Ground Sleeve Catalog No.	Part Number Mild Steel	Part Number Stainless Steel
CW326-18TH (R) Standard	18"	GRD.SLV.KT CW326-18-18(R)	63393302	63393389
CW326-18TH (R) Standard	24"	GRD.SLV.KT CW326-24-18(R)	63393303	63393389
CW330-18TH (R) Standard	18"	GRD.SLV.KT CW330-18-18(R)	63393304	See Note 1
	24"	GRD.SLV.KT CW330-24-18(R)	63393305	See Note 1
CC330-18TH (R) Standard	24"	GRD.SLV.KT CC330-24-18(R)	63393371	63393361
CC336-22TH (R) Standard	18"	GRD.SLV.KT CC336-18-22(R)	63493339	See Note 1
CW348-18TH (R) Standard	18"	GRD.SLV.KT CW348-18-18(R)	63393306	63493315
CW348-22TH (R) Standard	18"	GRD.SLV.KT CW348-18-22(R)	63393355	Note 1
CC348-18TH (R) Standard	18"	GRD.SLV.KT CC348-18-18(R)	63493300	63493315
CC348-22TH (R) Standard	18"	GRD.SLV.KT CC348-18-22(R)	63393355	63222681
	24"	GRD.SLV.KT CC348-24-22(R)	63493302	63493319
CC348-30TH (R) Standard	24"	GRD.SLV.KT CC348-24-30(R)	63493308	See Note 1
CW360-18TH (R) Standard	18"	GRD.SLV.KT CW360-18-18(R)	63393326	63393393
	24"	GRD.SLV.KT CW360-24-18(R)	63393318	See Note 1
CC360-18TH (R) Standard	18"	GRD.SLV.KT CC360-18-18(R)	63393382	See Note 1
CW360-22TH (R) Standard	18"	GRD.SLV.KT CW360-18-22(R)	63393310	63493336
CC360-30TH (R) Standard	18"	GRD.SLV.KT CC360-18-30(R)	63393370	See Note 1
CC366-22TH (R) Standard	18"	GRD.SLV.KT CW366-18-22(R)	63393312	See Note 1
	24"	GRD.SLV.KT CW366-24-22(R)	63393313	See Note 1
CC378-22TH (R) Standard	24"	GRD.SLV.KT CC378-24-22(R)	63393357	See Note 1
CC384-22TH (R) Standard	18"	GRD.SLV.KT CC384-18-22(R)	63393316	See Note 1
CW384-22TH (R) Standard	24"	GRD.SLV.KT CC384-24-22(R)	63393317	See Note 1

**NOTES:**

1. Contact your local Hubbell representative.
2. "CC" models are constructed of 12 gauge steel and "CW" models are constructed of 14 gauge steel.
3. Some models are constructed of 12 gauge steel on the front and back, while the sides are 14 gauge steel. Therefore, GRD.SLV.KT CW348-18-22(R) & GRD.SLV.KT CC348-18-22(R) have the same p/n.



# 300 Series Risers

Hubbell’s risers offer a means of elevating sectionalizing enclosure to a determined height, in order to mitigate damage caused by water flooding, excess snow accumulation, possible future vegetation or foliage, and other adverse ground level conditions. Risers come in either 12”, 18”, 24” as standard heights. “CC” models are constructed of 12 gauge steel and are offered as standard units. Contact you local Hubbell representative for other material options.

## RISERS

Catalog No. (mild steel)	Height (in)	Riser Catalog No.	Part Number Mild-Steel	Part Number Stainless Steel
CC326-18TH (R) Standard	18”	RISER 18” CC326-18TH (R)	63343947	See Note 1
CC330-18TH (R) Standard	10”	RISER 10” CC330-18TH (R)	63443912	See Note 1
CC330-22TH (R) Standard	18”	RISER 18” CC330-22TH (R)	63443902	See Note 1
	24”	RISER 24” CC330-22TH (R)	See Note 1	63443941
CC348-18TH (R) Standard	18”	RISER 18” CC348-18TH (R)	63343953	63443916
CC348-22TH (R) Standard	18”	RISER 18” CC348-22TH (R)	63443937	63443928
	24”	RISER 24” CC348-22TH (R)	63343949	63493315
	30”	RISER 30” CC348-22TH (R)	63343998	See Note 1
CC348-24TH (R) Standard	18”	RISER 18” CC348-24TH (R)	63343949	63393393
CC360-18TH (R) Standard	12”	RISER 12” CC360-18TH (R)	63343939	See Note 1
	18”	RISER 18” CC360-18TH (R)	63343941	63343965
CC360-22TH (R) Standard	12”	RISER 12” CC360-22TH (R)	63343988	See Note 1
	18”	RISER 18” CC360-22TH (R)	63343958	63443910
	24”	RISER 24” CC360-22TH (R)	63443909	See Note 1
CC366-22TH (R) Standard	12”	RISER 12” CC366-22TH (R)	63343945	63443917
	18”	RISER 18” CC366-22TH (R)	63343905	63343944
	24”	RISER 24” CC366-22TH (R)	63343946	63443929
CC366-30TH (R) Standard	24”	RISER 24” CC366-30TH (R)	63443921	See Note 1
CC378-22TH (R) Standard	18”	RISER 18” CC378-22TH (R)	63343983	63343966
	24”	RISER 24” CC378-22TH (R)	63343968	See Note 1
CC384-22TH (R) Standard	12”	RISER 12” CC384-22TH (R)	63343940	63443918
	18”	RISER 18” CC384-22TH (R)	63343950	See Note 1
	24”	RISER 24” CC384-22TH (R)	63343935	63443936

**NOTES:**

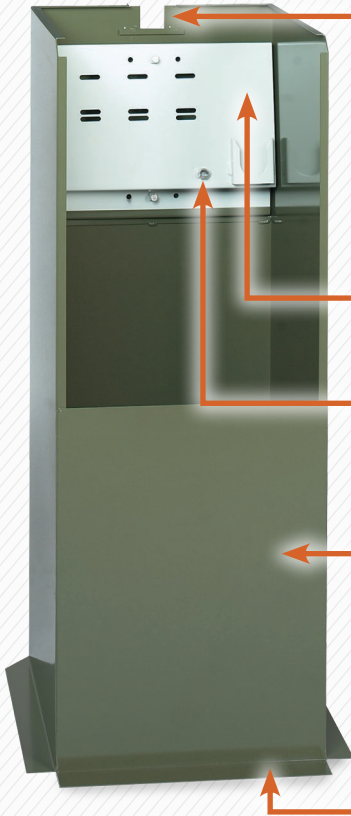
1. Contact your local Hubbell representative.

## 200 Series Mild Steel Primary Pedestals

Trinetics' primary pedestals provide a convenient means for single-phase sectionalizing or temporary cable cover for 200A underground distribution systems rated 15 or 25kV class. Accessories: Extra parking stands and load break junctions to customer specifications.

**NOTE:**

Junction modules are sold separately.



**Lift off or Top hinge** cover design for easy access to all electrical components.

**All-welded** construction.

**Stainless steel penta-head** locking bolt standard on all models.

**Light gray mounting bars** with integrated/welded parking stands for high visibility.

**Ground nuts conveniently located** on mounting bar.

**All stainless steel** hardware.

**Constructed of sturdy 14 ga. steel** as standard; 12 ga. available upon request.

**Durable powder paint finish** exceeds ANSI standards; Munsell green (7GY 3.29/1.5) to blend with surroundings.

**Integral ground sleeve** for simplified installation.

*Shipped fully assembled and packaged for ease of storage and installation.*

### 200 Series Metal Enclosure Selection

Phase	Type	Max # of junction interface points per phase		No. of parking stand per phase	Height (in)	Width (in)	Depth (in)	Catalog No. (mild steel)	Part Number
		200A							
		15 kV	25 kV						
1	Lift-off Cover	3	3	1	48	18	14	CW214-18 PEDESTAL	63233005
1	Lift-off Cover	4	3	2	48	22	15	CW215-22 PEDESTAL	63233010
1	Lift-off Cover	3	3	1	48	18	18	CW218-18 PEDESTAL	63233006
1	Hinged Cover	3	3	1	48	18	14	CW214-18TH (STANDARD)	63335126
1	Hinged Cover	3	3	1	48	18	18	CW218-18TH (STANDARD)	63335104
1	Hinged Cover	4	3	2	48	26	18	CW4826-18TH (STANDARD)	63335123

# Hubbell Deadbreak & Loadbreak Junctions

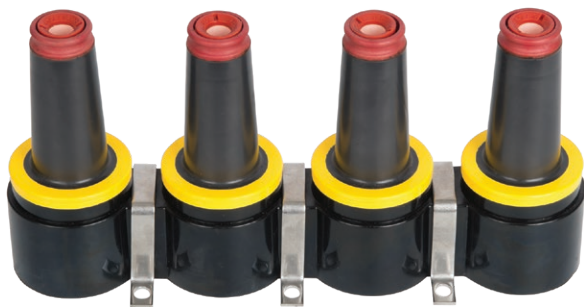
## Hubbell 2-Point, 3-Point, 4-Point, or TapMaster Junctions

Hubbell U-Strap dead break and load break junctions are available in either 2-point, 3-point, 4-point, or the TapMaster configuration to accommodate your specific application requirements. The junctions can be specified either as an individual item(s) shipped separately or as installed inside the specified sectionalizing enclosure, on a junction mounting bar.

Type	Amperage	Class	# of Points	Part Number
Load Break Junctions	200 A	15 kV	4	215J4U
			3	215J3U
			2	215J2U
		25 kV	4	228J4U
			3	228J3U
			2	228J2U
Dead Break Junctions	600 A	25 kV	4	625J4U
			3	635J3U
			2	625J2U
Dead Break Junctions	600 A	35 kV	4	635J4U
			3	635J3U
			2	635J2U

**NOTES:**

1. For Hubbell TapMaster options, please contact your local Hubbell representative.



A typical loadbreak junction: **215J4U** rated for 200A, 15kV, 4-point U-Strap



A Hubbell TapMaster junction: **628TM622226U** rated for 200/600A, 28kV.



[www.hubbell.com/hubbellpowersystems](http://www.hubbell.com/hubbellpowersystems)

**For product inquiries, please contact your local sales representative or customer service representative.**

©2021 Hubbell Incorporated.  
Because Hubbell has a policy of continuous product improvement,  
we reserve the right to change design and specifications without notice.  
Printed in the U.S.A. | BR\_10\_317E\_0621