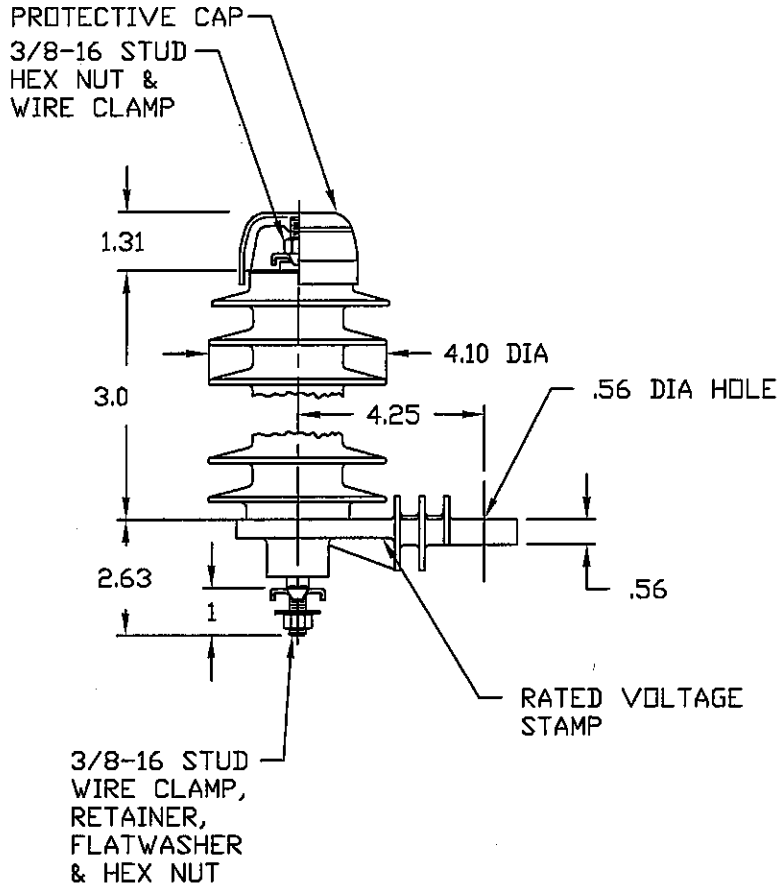


NOTES:

1. DIMENSIONS SUBJECT TO +/- 3% TOLERANCE
2. LEAKAGE DISTANCE (Inches) - 8.5
3. ALTITUDE 0-12000 FT. ABOVE SEA LEVEL
4. WEIGHT OF UNIT INCLUDING HARDWARE - 3 LB.
5. MAXIMUM CONTINUOUS LINE-TO-GROUND OPERATING VOLTAGE 2.55 kV MCOV
6. DUTY CYCLE VOLTAGE RATING 3 kV RMS.



.5 μ SEC 10kA IR kV	500 A SWITCHING SURGE IR kV	MAXIMUM 8/20 DISCHARGE VOLTAGE - kV AT					
		1.5 kA	3.0 kA	5 kA	10 kA	20 kA	40 kA
10.6	7.6	8	8.5	9	9.9	11.1	13.2

DISTRIBUTION
CLASS
SURGE
ARRESTER

OHIO BRASS
TOLERANCE CHART



HUBBELL POWER SYSTEMS

CONFIDENTIAL: THIS DRAWING AND ITS CONTENTS ARE CONFIDENTIAL AND THE EXCLUSIVE PROPERTY OF HUBBELL POWER SYSTEMS. NO PUBLICATION, DISTRIBUTION OR COPIES MAY BE MADE WITHOUT THE WRITTEN CONSENT OF HUBBELL POWER SYSTEMS. HUBBELL POWER SYSTEMS UNPUBLISHED. ALL RIGHTS RESERVED UNDER THE COPYRIGHT LAWS.

TITLE
PDV-100 OPTIMA
2.55 KV MCOV

SIZE S	DWG NO. ALES7XXX	CAT / PART / ASSY NO. 213703-7314	REV 7
-----------	---------------------	--------------------------------------	----------

REV DATE
10/24/07

DO NOT SCALE THIS DRAWING	DRN BY ENG122	DATE 06/17/00	SHEET 1 OF 1
---------------------------	---------------	---------------	--------------