



Product Datasheet

ANDERSON FARGO

CA11 -- Clevis Eye



Clevis Eye, Ductile Iron, Clevis: 0.875" Opening, 0.625" Pin, Eye: 1.125" with 0.688" Hole, UTS 25,000 lb

Product Specifications

Hardware Family



Clevis Eye &
Y-Clevis Eye
Coupling Fittings

Clevis Eye Fittings



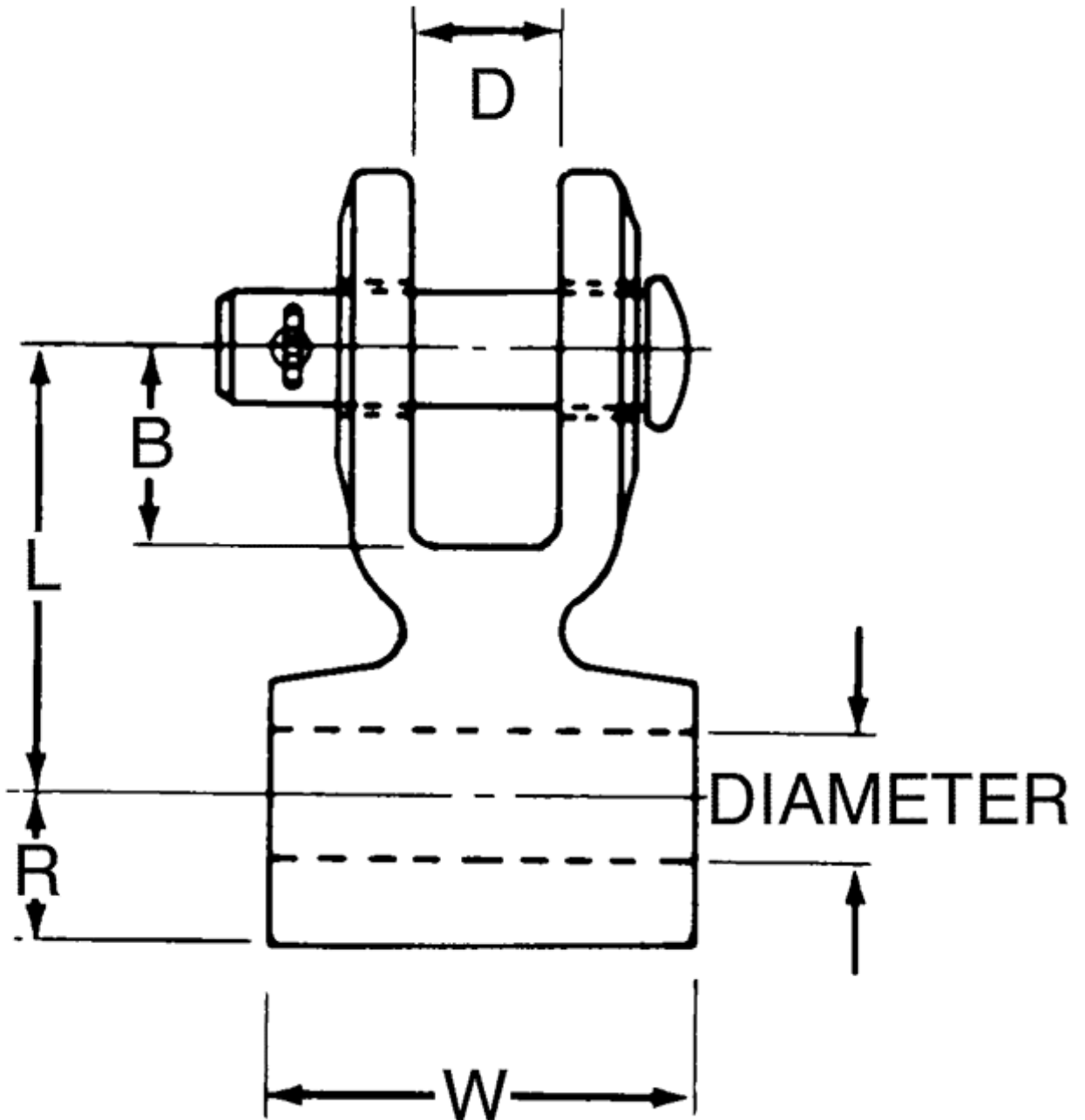
CA Series
Clevis-Eye
Coupling Fittings

[Click HERE to view the web page.](#)

| | |
|------------------------------|------------------------|
| Ultimate Strength | 25,000 lb (11,340 kg) |
| Coupling Length | 2.500 in (63.50 mm) |
| Eye Width | 1.125 in (28.58 mm) |
| Eye Hole Diameter | 0.688 in (17.48 mm) |
| Dimension B | 1.063 in (26.99 mm) |
| Dimension D | 0.875 in (22.23 mm) |
| Dimension R | 0.813 in (20.64 mm) |
| Dimension W | 1.125 in (28.58 mm) |
| Dimension PD | 0.625 in (15.88 mm) |
| Material | Ductile Iron |
| Cotter Pin Material | Stainless Steel |
| Clevis Pin Material | Galvanized Steel |
| Material Type | Non-Standard |
| UPC Code | 09635929607 |
| Standard Package | 30 |
| Standard Package Unit | Each |
| Min Order Qty | 1 |
| Weight / Ea. | 1.666 lbs |

Compressed Product Number

CA11



[Catalog Home](#)



[Warranty Info](#) | [Trademarks](#) | [Terms of Use](#)

All contents Copyright © 2007 Hubbell Power Systems, Inc. All rights reserved.

NOTE: Because Hubbell has a policy of continuous product improvement, we reserve the right to change design and specifications without notice.