



Catalog Number: U5300-O-55
Item Description: 125A RT MTR DB PED
UPC Code: 784572266421

Brand Name: Milbank

Type: Ring Type Metered Power Supply Unit

Special Features: 4 Terminal, Plain Top, 2 Barrel Ground Lug and Ground Bar, No Bypass, Single Power Head, 6 Branch Circuits

Application: RV Power

Standard: UL Listed

Voltage Rating: Up to 240 Volts Alternating Current

Amperage Rating: 125 Ampere Continuous

Wattage: Not Applicable

Frequency Rating: 60 Hertz

Phase: 1 Phase

Number of Receptacles: 2

Receptacle Configuration: NEMA 14-50, NEMA 5-20 Ground Fault Receptacle

Control: One Single Pole 20 Ampere Breaker, One Double Pole 50 Ampere Breaker, No Main Breaker

Material: G90 Galvanized Steel with Powder Coat Finish

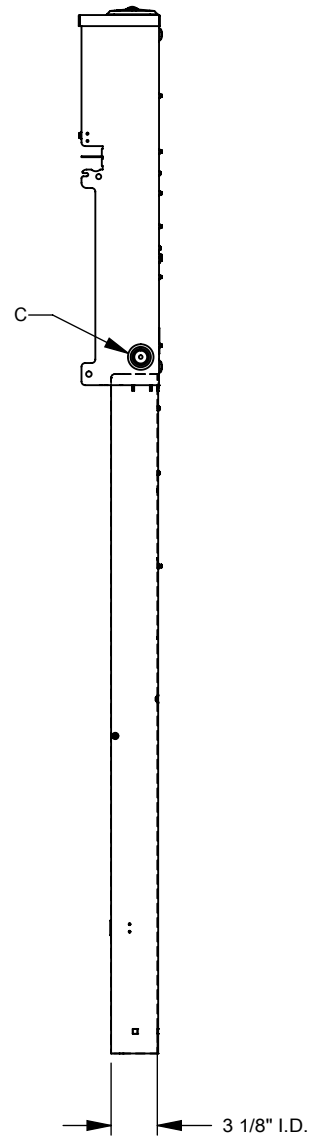
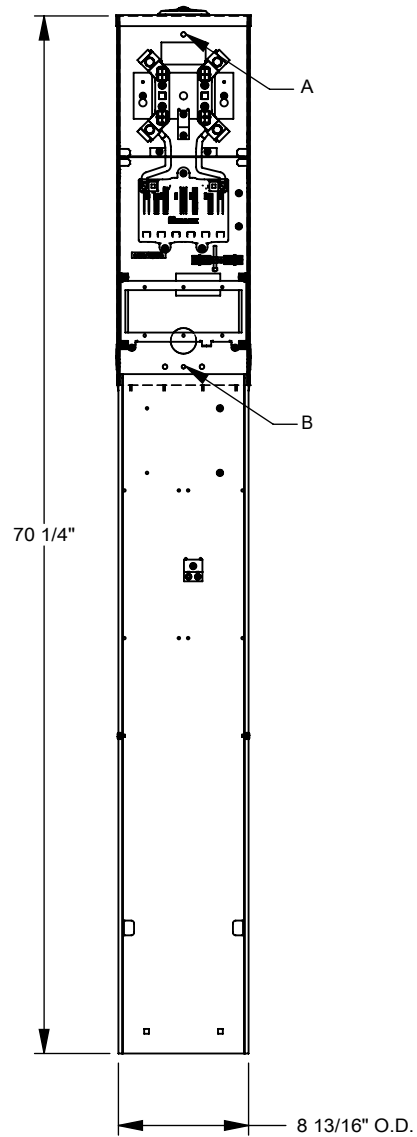
Mounting: Pedestal Mount

Cable Size: 6 AWG to 350 KCMIL

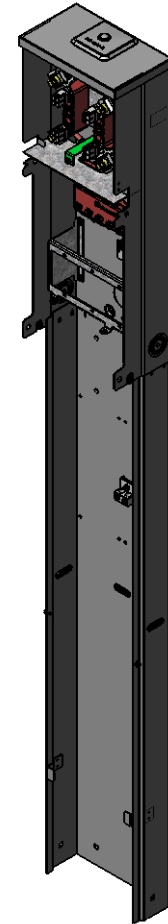
Enclosure: Type 3R



Utility requirements may vary. Always consult the serving utility for their requirements prior to ordering or installing this equipment. This product must always be installed by a licensed electrician. Installation of this equipment may require local electrical inspector approval.



FEATURE TABLE		
ITEM	QTY	DESCRIPTION
A	3	U/L MNTG.EMBOSS
B	1	5/16 SOLID K.O.
C	2	1/2, 3/4, 1, 1 1/4 CONC. K.O.



MILBANK
ENERGY AT WORK

Version:

1

All dimensions are +/- 1/16".
Drawing views are not to scale.
Utility requirements for this equipment may vary. Always consult the serving utility for their requirements prior to ordering or installing this equipment. This product must be installed by a licensed electrician. Installation of this equipment may require local electrical inspector approval.