

# Space-Maker Conduit Hubs

Threaded for Rigid Conduit & IMC

## Type CH & Type CH-T

### Use:

Type CH - General purpose, suitable for use with heavy wall cabinets

Type CH-T - Insulated throat form with bonding screw. Provides a more vibration resistant connection with assured ground continuity

### Features:

- Female bushed nipple type
- Female thread for rigid conduit and IMC
- Takes less space
- Recessed O-ring seal outside the box provides a watertight threaded hub on enclosures.
- Suitable for use with service entrance conduit.

### Material/Finish:

Malleable Iron/Zinc Plated

### Optional Finish:

For additional corrosion protection, specify Mechanically Galvanized  
Contact your local representative for pricing and availability.

### Third Party Certification:



UL Listed: E-11853  
UL Listed as suitable for use in wet locations.



CSA Certified: 009795

Suitable for use in hazardous locations as follows:

Class I, Div. 2  
Class III, Div. 1, 2  
Per NEC 501-4(b), 501.10(b)(4),  
502-4(a)(2), 503-3(a)

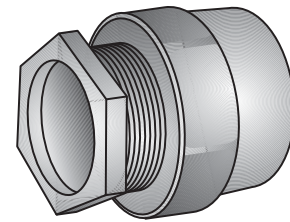
### Applicable Third Party Standards:

UL Standard: 514B  
CSA Standard: C22.2 No. 18  
Fed. Spec: W-F-408E  
NEMA: FB-1  
• NEMA: FB-1  
• NEMA: 4  
• NEMA: 12

### Notes:

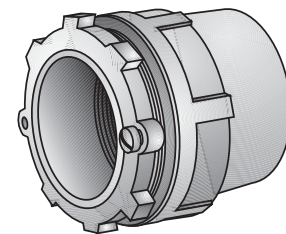
Minimum wall thickness that can be accommodated is  $\frac{1}{32}$ ".

Trade Size (inches)	Catalog Number	Dimensions in Inches			Max. Box Wall Thick.
		B	C	A Female Tapered NPSM	
$\frac{1}{2}$	CH-50	$1\frac{1}{8}$	$1\frac{1}{4}$	$\frac{1}{2}$ - 14	$\frac{5}{32}$
$\frac{3}{4}$	CH-75	$1\frac{1}{4}$	$1\frac{5}{8}$	$\frac{3}{4}$ - 14	$\frac{5}{32}$
1	CH-100	$1\frac{3}{8}$	$1\frac{3}{4}$	1 - 11 $\frac{1}{2}$	$\frac{5}{16}$
$1\frac{1}{4}$	CH-125	$1\frac{3}{4}$	$2\frac{1}{4}$	$1\frac{1}{4}$ - 11 $\frac{1}{2}$	$\frac{15}{32}$
$1\frac{1}{2}$	CH-150	$1\frac{7}{8}$	$2\frac{1}{2}$	$1\frac{1}{2}$ - 11 $\frac{1}{2}$	$\frac{1}{2}$
2	CH-200	$1\frac{3}{4}$	$3\frac{1}{8}$	2 - 11 $\frac{1}{2}$	$2\frac{1}{32}$
$2\frac{1}{2}$	CH-250	$2\frac{1}{2}$	$3\frac{3}{4}$	$2\frac{1}{2}$ - 8	$2\frac{1}{32}$
3	CH-300	$3\frac{3}{8}$	$4\frac{7}{8}$	3 - 8	$2\frac{3}{32}$
$3\frac{1}{2}$	CH-350	$2\frac{3}{4}$	5	$3\frac{1}{2}$ - 8	$1\frac{15}{16}$
4	CH-400	$2\frac{3}{4}$	$5\frac{1}{2}$	4 - 8	$\frac{5}{8}$
5	CH-500	$2\frac{3}{4}$	$6\frac{7}{8}$	5 - 8	$\frac{5}{8}$
6	CH-600	$2\frac{3}{4}$	$7\frac{1}{4}$	6 - 8	$1\frac{15}{16}$



Type CH

Trade Size (inches)	Insulated Throat Catalog Number	Dimensions in Inches			Max. Box Wall Thick.
		B	C	A Female Tapered NPSM	
$\frac{1}{2}$	CH-50T	$1\frac{1}{8}$	$1\frac{1}{4}$	$\frac{1}{2}$ - 14	$\frac{1}{16}$
$\frac{3}{4}$	CH-75T	$1\frac{1}{4}$	$1\frac{5}{8}$	$\frac{3}{4}$ - 14	$\frac{3}{32}$
1	CH-100T	$1\frac{3}{8}$	$1\frac{3}{4}$	1 - 11 $\frac{1}{2}$	$\frac{1}{16}$
$1\frac{1}{4}$	CH-125T	$1\frac{3}{4}$	$2\frac{1}{4}$	$1\frac{1}{4}$ - 11 $\frac{1}{2}$	$\frac{3}{16}$
$1\frac{1}{2}$	CH-150T	$1\frac{7}{8}$	$2\frac{1}{2}$	$1\frac{1}{2}$ - 11 $\frac{1}{2}$	$\frac{7}{32}$
2	CH-200T	$1\frac{3}{4}$	$3\frac{1}{8}$	2 - 11 $\frac{1}{2}$	$\frac{7}{32}$
$2\frac{1}{2}$	CH-250T	$2\frac{1}{2}$	$3\frac{3}{4}$	$2\frac{1}{2}$ - 8	$\frac{3}{16}$
3	CH-300T	$2\frac{5}{8}$	$4\frac{7}{8}$	3 - 8	$\frac{3}{16}$
$3\frac{1}{2}$	CH-350T	$2\frac{3}{4}$	5	$3\frac{1}{2}$ - 8	$\frac{3}{16}$
4	CH-400T	$2\frac{3}{4}$	$5\frac{1}{2}$	4 - 8	$\frac{1}{8}$
5	CH-500T	$2\frac{3}{4}$	$6\frac{7}{8}$	5 - 8	$\frac{1}{4}$
6	CH-600T	$2\frac{3}{4}$	$7\frac{1}{4}$	6 - 8	$\frac{1}{4}$



Type CH-T

