

# Switched Disconnects and Enclosures

## 600V AC Manual Toggle Controllers/Disconnects

For use in almost any industrial environment. Ideal component switch for motor control and as a disconnect. Toggle controllers can be built into equipment and enclosures for either box or panel-mount installation.

Amp	Poles	ToggleType	Wire	HP Rating				Catalog Number
				120V AC 1Ø	240V AC 3Ø	480V AC 3Ø	600V AC 3Ø	
30	2	Standard	Back/Side	2	5	10	15	<b>HBL7832</b>
	2	Short	Back/Side	2	5	10	15	<b>HBL7832S</b>
	3	Standard	Back/Side	3	7.5	15	20	<b>HBL7810</b>
	3	Short	Back/Side	3	7.5	15	20	<b>HBL7810S</b>
40	2	Standard	Side	2	5	10	15	<b>HBL7842D</b>
	3	Standard	Side	3	7.5	15	20	<b>HBL7843D</b>
50	2	Standard	Side	2	5	10	15	<b>HBL7852D</b>
	3	Standard	Side	3	7.5	15	25	<b>HBL7853D</b>
60	2	Standard	Back	—	10	15	20	<b>HBL7862D</b>
	3	Standard	Back	—	10	25	30	<b>HBL7863D</b>
	2	Standard	Front	—	10	15	20	<b>HBL7862FWD</b>
	3	Standard	Front	—	10	25	30	<b>HBL7863FWD</b>
85	2	Standard	Back	—	10	15	20	<b>HBL7882D</b>
	3	Standard	Back	—	10	25	40	<b>HBL7883D</b>
Optional Side Guard, for close wall applications and finger safe environments.								<b>HBLFG30*</b>

Note: \*For 30A, 40A and 50A controllers.



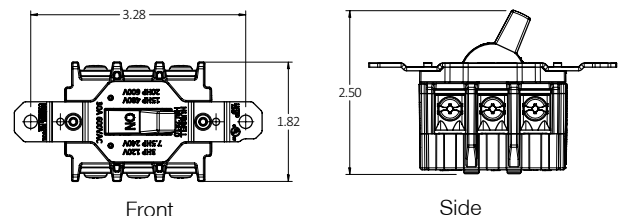
## Specifications

Electrical Performance		
Dielectric Voltage	Min. 2,200V AC minimum for 1 minute	
Electrical Life	Min. 6,000 Cycles at rated switch load	
Max. Working Voltage	600V AC RMS	
	Switches	10,000 RMS
Short Circuit	30A & 40A	60A max. when protected by J fuses
Withstand Rating	50A	50A max. when protected by J fuses
as Motor Disconnect	60A & 85A	80A max. when protected by J fuses
Short Circuit	30A	60A max when protected by RK5 fuses
Withstand Rating		
as Motor Controller	40A – 85A	125A max. RK5 fuses
Mechanical		
Mechanical Life	Min. 10,000 minimum cycles	
	Switch Rating	AWG Max.
Terminal	30A	#10
Accommodations	40A & 50A	#8**
	60A & 85A	#4
Wire Type	Solid and stranded copper wire only.	
Terminal Torque	30A – 50A	20 inch pounds
Switch Rating	60A – 85A	25 inch pounds
Environmental		
Flammability	UL94HB/VO	
Operating Temp.	Max. 75°C	
	Min. -40°C continuous without impact	
Listings		
UL 508	Industrial Control File #E70402	
CSA-C22.2 No.14	LR-46186	

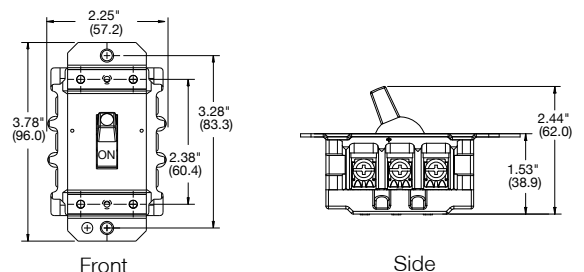
Note: \*\*Use listed certified ring terminal.

## Dimensions

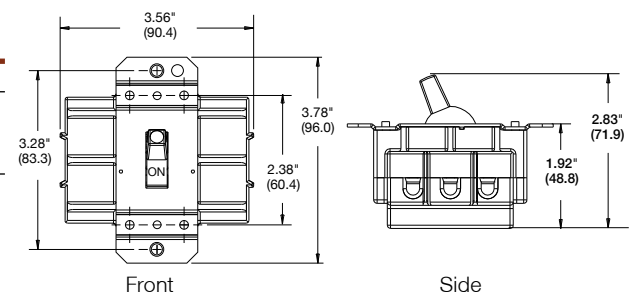
### 30 Amp Standard Toggles



### 40 and 50 Amp Standard Toggles



### 60 and 85 Amp Standard Toggles



Dimensions in Inches (mm)