

# Single Pole Devices and Temporary Power



Series 16 - 300 and 400 Amp, 600 Volts

Enclosure Types  
3R, 4X, 12

## Tees and 3-Fers



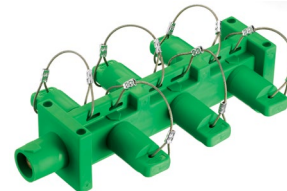
Color	Paralleling Tee (Male-Male-Female)	Tapping Tee (Female-Male-Female)	3-Fer (Male-Female-Female-Female)	3-Fer (Female-Male-Male-Male)	Soft 3-Fer (Male-Female-Female-Female)	Soft 3-Fer (Female-Male-Male-Male)
Black	<b>HBLPTBK</b>	<b>HBLTBK</b>	<b>HBLM3FBK</b>	<b>HBLF3MBK</b>	<b>HBLM3FSBK</b>	—
White	<b>HBLPTW</b>	<b>HBLTW</b>	<b>HBLM3FW</b>	<b>HBLF3MW</b>	—	—
Green	<b>HBLPTGN</b>	<b>HBLTGN</b>	<b>HBLM3FGN</b>	<b>HBLF3MGN</b>	—	<b>HBLF3MSGN</b>
Red	<b>HBLPTR</b>	<b>HBLTR</b>	<b>HBLM3FR</b>	<b>HBLF3MR</b>	—	—
Blue	<b>HBLPTBL</b>	<b>HBLTBL</b>	<b>HBLM3FBL</b>	<b>HBLF3MBL</b>	—	—
Brown	<b>HBLPTBN</b>	<b>HBLTBN</b>	<b>HBLM3FBN</b>	<b>HBLF3MBN</b>	—	—
Orange	<b>HBLPTO</b>	<b>HBLTO</b>	<b>HBLM3FO</b>	<b>HBLF3MO</b>	—	—
Yellow	<b>HBLPTY</b>	<b>HBLTY</b>	<b>HBLM3FY</b>	<b>HBLF3MY</b>	—	—

## Gender Reversing Devices



Color	Double Male (Male-Male)	Double Female (Female-Female)
Black	<b>HBLDMBK</b>	<b>HBLDFBK</b>
White	<b>HBLDMW</b>	<b>HBLDFW</b>
Green	<b>HBLDMGN</b>	<b>HBLDFGN</b>
Red	<b>HBLDMR</b>	<b>HBLDFR</b>
Blue	<b>HBLDMBL</b>	<b>HBLDFBL</b>
Brown	<b>HBLDMBN</b>	<b>HBLDFBN</b>
Orange	<b>HBLDMO</b>	<b>HBLDFO</b>
Yellow	<b>HBLDMY</b>	<b>HBLDFY</b>

## Distribution Block



Description	Color	(1-Male, 6-Females)
400 amp Distribution Block, Single Conductor, Heavy Duty Industrial Grade, Pre-Wired, (1) Male to (6) Females.	Black	<b>HBL7DBBK</b>
	White	<b>HBL7DBW</b>
	Green	<b>HBL7DBGN</b>
	Red	<b>HBL7DBR</b>
	Blue	<b>HBL7DBBL</b>
	Brown	<b>HBL7DBBN</b>
	Orange	<b>HBL7DBO</b>
	Yellow	<b>HBL7DBY</b>

## Replacement Bodies (10 Pack)



Color	Male Body	Female Body
Black	<b>HBLMBBK</b>	<b>HBLFBBK</b>
White	<b>HBLMBW</b>	<b>HBLFBW</b>
Green	<b>HBLMBGN</b>	<b>HBLFBGN</b>
Red	<b>HBLMBR</b>	<b>HBLFBR</b>
Blue	<b>HBLMBBL</b>	<b>HBLFBBL</b>
Brown	<b>HBLMBBN</b>	<b>HBLFBBN</b>
Orange	<b>HBLMBO</b>	<b>HBLFBO</b>
Yellow	<b>HBLMBY</b>	<b>HBLFBY</b>

## Replacement Contacts (20 Pack)



Description	Male Pin	Female Sleeve
Contact, 300 amp	<b>HBL300RCM</b>	<b>HBL300RCF</b>
Contact, 400 amp	<b>HBL400RCM</b>	<b>HBL400RCF</b>

## Snap Back Covers (3R Only)



Color	Through Hole Mounting	Threaded Mounting Holes
Black	<b>HBLSCBK</b>	<b>HBLSCCBK</b>
White	<b>HBLSCW</b>	<b>HBLSCCW</b>
Green	<b>HBLSCGN</b>	<b>HBLSCCGN</b>
Red	<b>HBLSCR</b>	<b>HBLSCCR</b>
Blue	<b>HBLSCBL</b>	<b>HBLSCCBL</b>
Brown	<b>HBLSCBN</b>	<b>HBLSCCBN</b>
Orange	<b>HBLSCO</b>	<b>HBLSCCO</b>
Yellow	<b>HBLSCY</b>	<b>HBLSCCY</b>

## Accessories



Description	Catalog Number
Accessory Kit, retaining screw, copper foil, terminal screws and brass wire.	<b>HBLPK</b>
Replacement retaining screw (500 pack).	<b>HBLRS</b>
Copper foil (500 pack).	<b>HBLCF</b>
Brass wire (500 pack).	<b>HBLBW</b>
Terminal screw - inline (500 pack).	<b>HBLTS</b>
Terminal screw - panel mount (500 pack).	<b>HBLTSR</b>