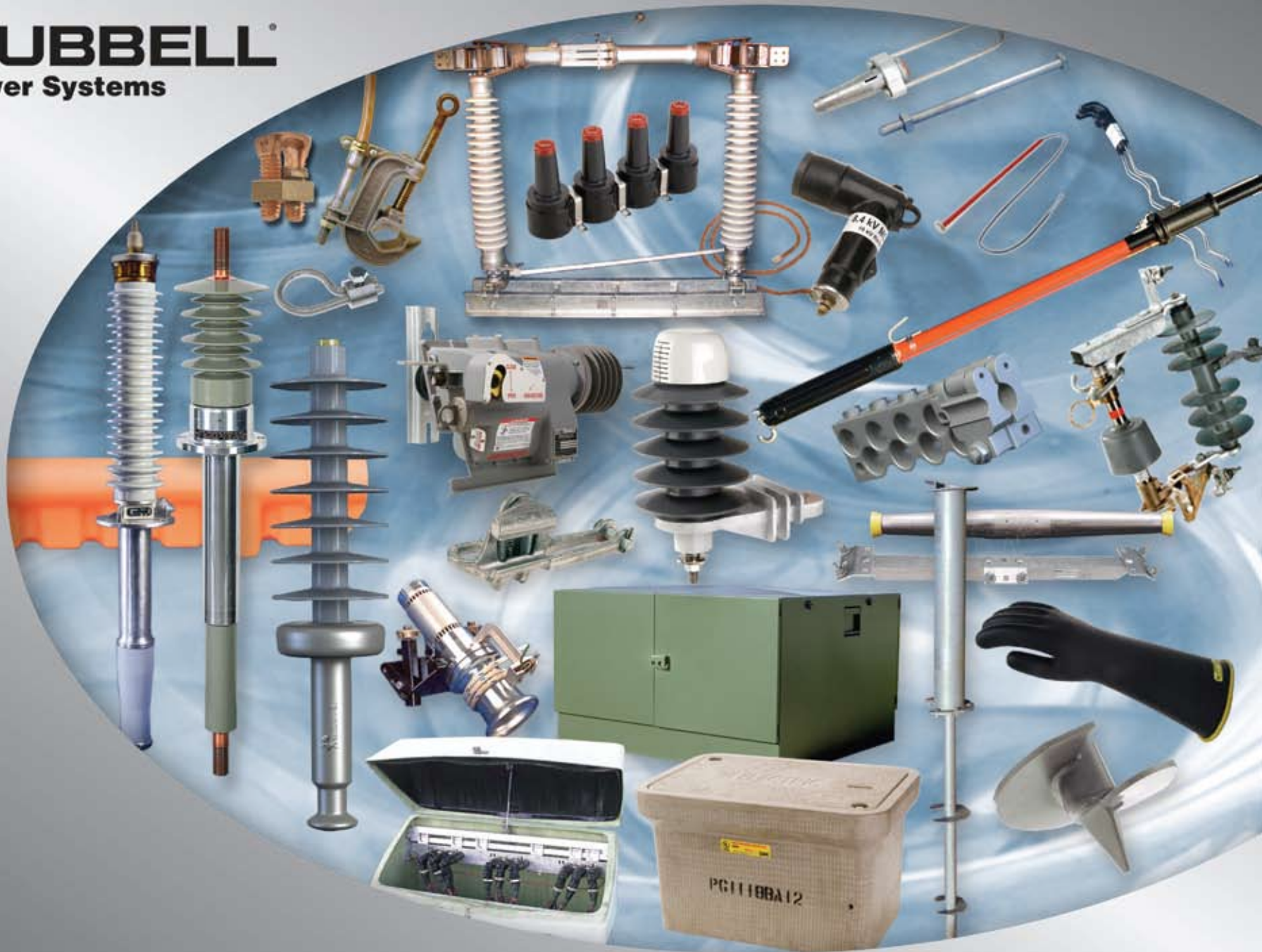


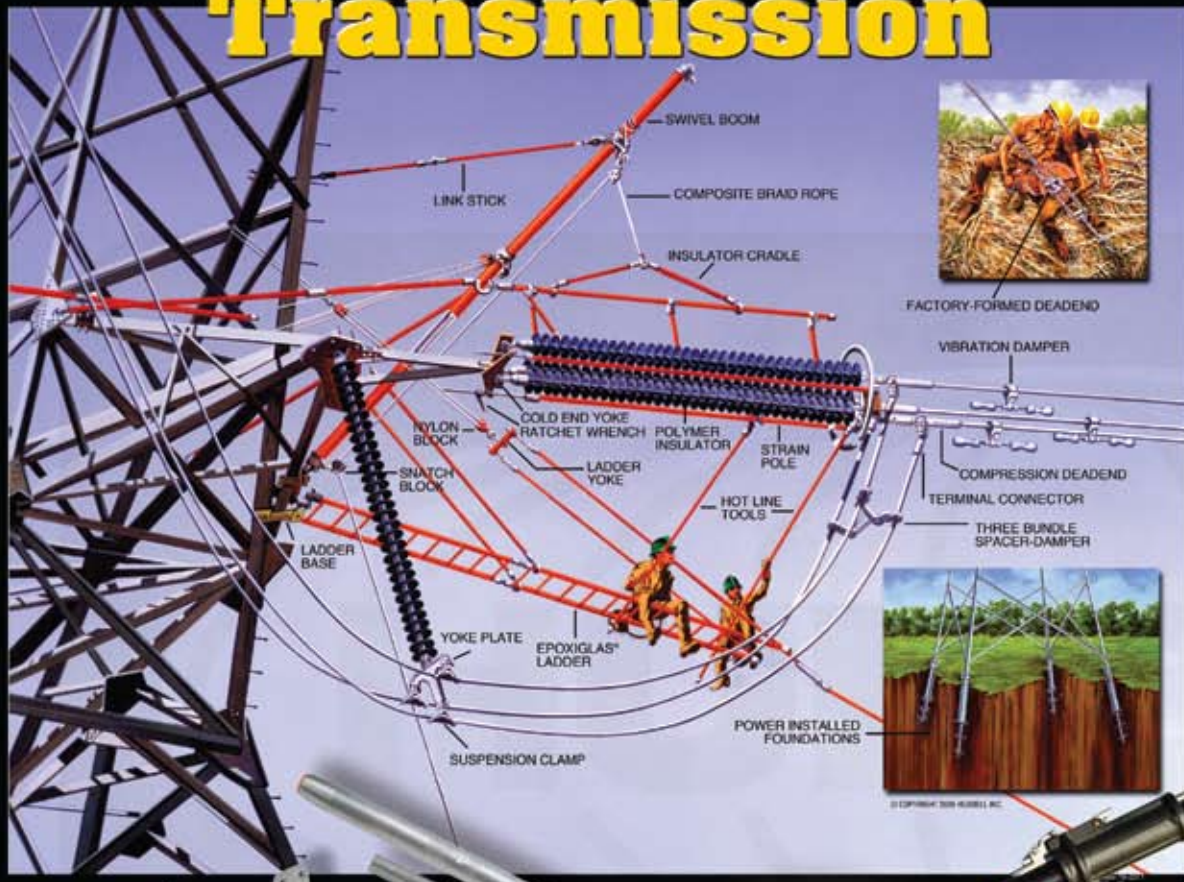
YOUR PRODUCT PACKAGE IS HERE !



HUBBELL
Power Systems



Transmission



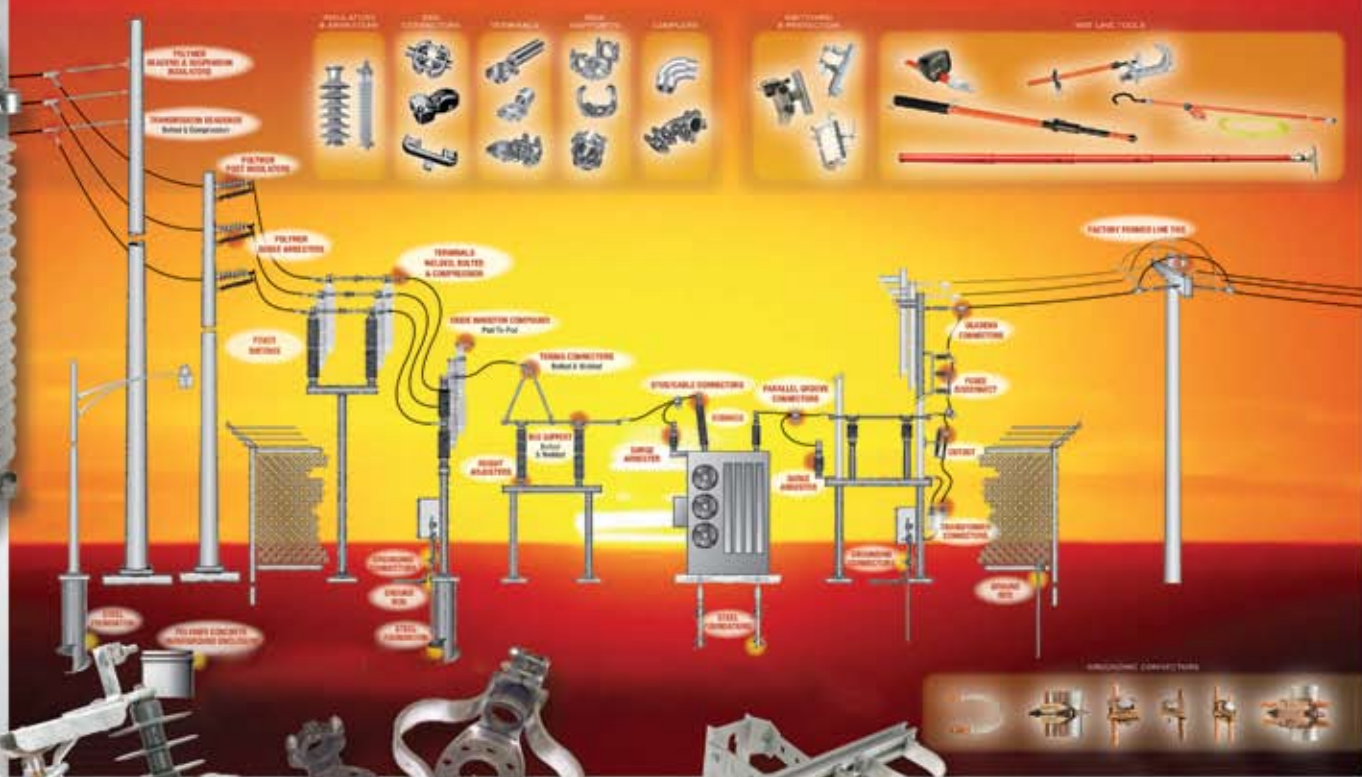
- ANCHORS & FOUNDATIONS
- CONNECTORS & HARDWARE
- FACTORY FORMED DEADENDS
- HOT LINE TOOLS
- INSULATORS
- SWITCHES
- TRANSMISSION LINE ARRESTERS



SUBSTATION

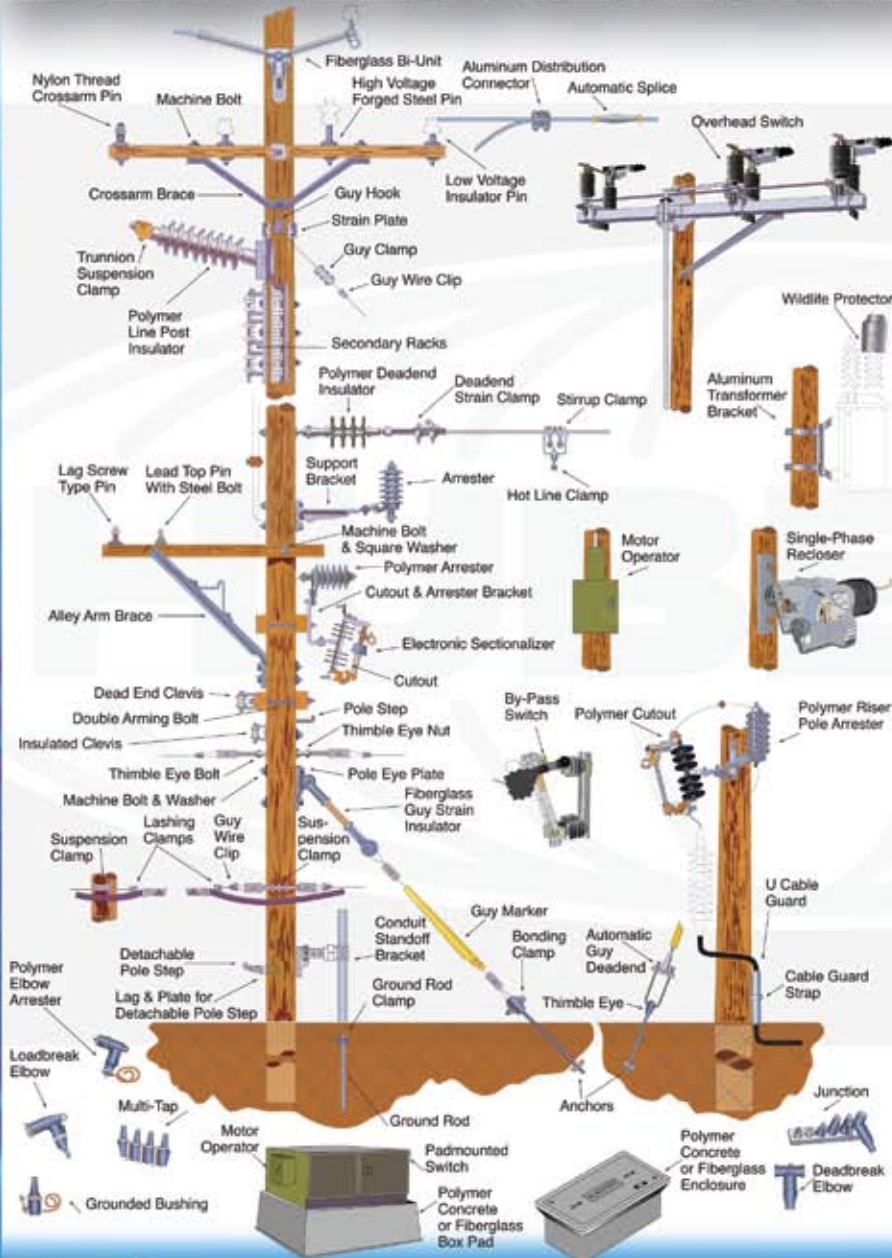


- ARRESTERS
- BUSHINGS
- BUS SUPPORTS
- COUPLERS
- CUTOUTS
- EHV CONNECTORS
- FOUNDATIONS
- GROUNDING CONNECTORS
- HOT LINE TOOLS
- INSULATORS
- SECTIONALIZING CABINETS
- SWITCHES
- TERMINALS
- TRENCH COVERS
- UNDERGROUND ENCLOSURES



HUBBELL
Power Systems

Distribution



ANCHORS
 ARRESTERS
 BOX PADS
 CABLE ACCESSORIES
 CONNECTORS
 CONSTRUCTION TOOLS
 CUTOUPS & FUSE LINKS
 DRAIN SYSTEMS
 FIBERGLASS PEDESTALS
 FORMED WIRE PRODUCTS
 GROUNDING EQUIPMENT
 HOT LINE TOOLS
 INSULATORS
 NARROW PROFILE CONSTRUCTION
 OVERHEAD SWITCHES
 PAD-MOUNTED SWITCHES
 POLE LINE HARDWARE
 RECLOSERS
 RESETTABLE SECTIONALIZER
 SECTIONALIZING CABINETS
 UNDERGROUND ENCLOSURES
 WILDLIFE PROTECTORS





HUBBELL®
Power Systems

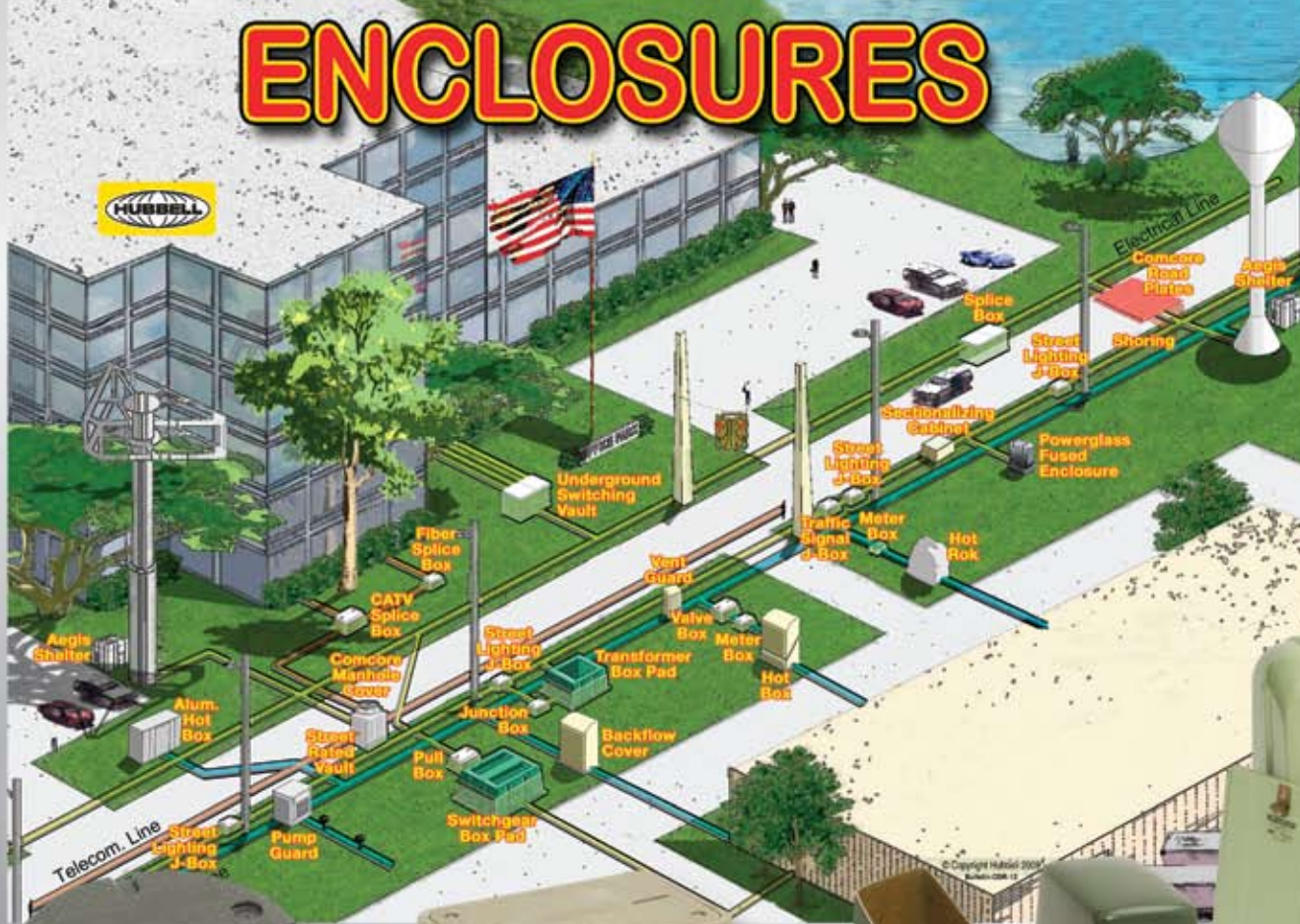
Underground



- ARRESTERS
- BOX PADS
- CABLE ACCESSORIES
- COVER UP
- MANHOLE COVERS
- MICROPILES
- SECTIONALIZING CABINETS
- SWITCHES
- TOOLS
- UNDERGROUND ENCLOSURES
- VAULTS



ENCLOSURES



- ADJUST TO GRADE VAULTS
- BOX PADS
- COMPOSITE MANHOLE COVERS
- FIBERGLASS PEDESTALS
- FLARED WALL BOXES
- RUSTGUARD ENCLOSURES
- SECTIONALIZING CABINETS
- STRAIGHT WALL BOXES
- UNDERGROUND ENCLOSURES



HUBBELL[®]
Power Systems

Your Source for the Industry's Widest Product Offering

Cutouts and Fuse Links

Equipment to protect against faults and over-current conditions on power distribution systems.

- Open-Type Cutouts
- Linkbreak Cutouts
- Loadbreak Cutouts
- Cutout-Arrester Combinations
- Polymer Cutouts
- Primary Fuse Links



Overhead Distribution Switches & Reclosers

Equipment used to control and route the flow of power through electrical lines. Reclosers help protect the system.

- Hookstick Switches
- Automation-Ready Switches
- Line Tension Disconnects
- By-Pass Switches
- Motor Operators
- Single Phase Reclosers



Cable Accessories

Products to connect, sectionalize and protect underground cable systems.

- 200A Loadbreak Products
- 600A Loadbreak Products
- Elbow Arresters



Arresters

Equipment to protect against over voltages such as lightning or switching.

- Station Class (Polymer & Porcelain)
- Protecta*Lite® Systems (Polymer)
- Intermediate Class (Polymer)
- Distribution Class (Polymer)
- ANSI and IEC Designs
- Riser Pole (Polymer)
- Distribution (Polymer) Arrester



Underground Switches

Dead-front units for underground distribution sectionalizing in a wide variety of circuit configurations.

- Pad-Mounted Switches
- Switch-Fuse Cabinets
- Air-Insulated Switches
- Motor Operators



Above ground & Underground Enclosures & Pads

- Backflow Enclosures
- Electrical Equipment
- Traffic Signal Cabinet Boxes
- Cabinet Pads
- Box Pads
- Manhole Covers
- Pedestals
- Wall Boxes
- Sectionalizing Cabinets



Hot Line Tools

All types of tools mounted on Epoxiglas® insulated poles. Used to maintain energized high-voltage lines.

- Insulated Load-Handling Tools
- Storage and Transport Trailers
- Insulated Hand-Held Sticks
- Insulated Hot-Line Ladders
- Platforms and Accessories
- Rubber Line Hose
- Cover-Up and Barriers
- Meters and Instruments
- Telescoping Tools
- Deadend Tools
- Conductor-Support Tools
- Jumpering Equipment
- Rubber Insulating Gloves & Sleeves



Resettable Sectionalizers

The sectionalizer offers a convenient way of isolating sections of distribution systems in the event of a permanent fault, while eliminating outages due to temporary faults. The resettable design eliminates the need to change the consumable actuator every time the sectionalizer operates.



Drain Systems

- Transportation
- Presloped Trench
- Industrial Flooring
- Foundation Ventilation



Construction Tools

Tools and accessories for building overhead, outside plant and underground power lines.

- Capstan Hoists
- Chain Hoists
- Nylon Strap Hoists
- Construction Ladders
- Ropes and Slings
- Bags and Buckets
- Pole-Handling Tools



Temporary-Grounding Equipment

Clamps and accessories to help promote the safety of linemen while doing maintenance work on temporarily "dead" lines.

- Grounding Clamps
- Grounding Cable
- Substation Grounding Sets
- Underground Distribution Grounding Sets



HUBBELL
Power Systems

Anchors and Foundations

Anchors help hold erect overhead power and communication lines. Foundations support towers, streetlight standards and apparatus.

- Screw Anchors
- Expanding Anchors
- Plate Anchors
- Rock Anchors
- Installing Tools
- Foundation Screw Piles
- HeliCAP® Engineering Software
- HELICAL PULLDOWN® Micropiles
- Tiebacks
- Resistance Piers



Capacitance-Graded Bushings

For transformers and oil circuit breakers and most other power apparatus where HV bushings are used.

- Bushings
- Test Terminals
- Bushing Repair



Wildlife Protectors Equipment Locks

Polypropylene wildlife protectors guard bushings. Locks secure equipment.

- Bushing Protectors
- Tamper-proof Locks



Formed-Wire Products

Precision machine-spiralled wire products for deadending and conductor tying.

- Deadend Grips for Guy Strand
- Insulator Ties



Splices, Deadends, Dampers, Fittings and Accessories

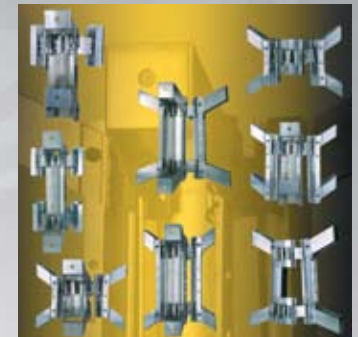
- Automatic Line Splices
- GDW Wedge Deadend
- Compression Fittings
- Stockbridge Dampers



Pole Line Hardware

Galvanized-steel and aluminum fixtures and extruded plastic materials are used in overhead, outside plant and underground line construction.

- Anchor Rods
- Bolts & Nuts
- Brackets & Plates
- Cable Clamps
- Cable Guards
- Cable Positioners
- Cable Racks
- Cable Route Markers
- Capacitor Racks
- Clevises & Wireholders
- Conduit Standoffs
- Fiberglass Pedestals
- Ground Rods
- Ground-Rod Clamps
- Guy Guards
- Guying Bolts & Clamps
- Hangers
- Manhole Ladders
- Pins & Racks
- Platforms
- Pole Bands
- Pole Steps
- Staples
- Steel Suspension Arms
- Transformer Mounts



Insulators

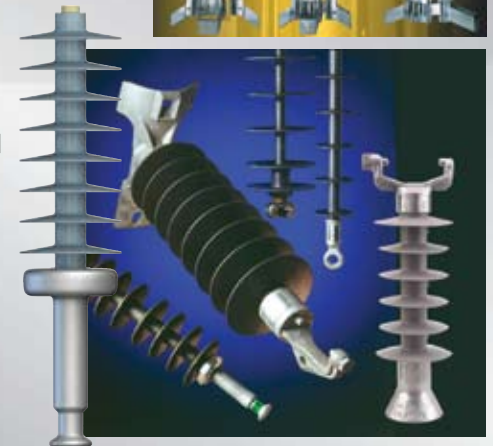
Polymer insulators for transmission and distribution lines.

Transmission Insulators

- Suspension Insulators
- Line Post Insulators
- Station Post Insulators

Distribution Insulators

- Suspension Insulators
- Station Post Insulators



Narrow-Profile Fiberglass Construction

Pole-framing accessories and conductor accessories for electrical transmission and distribution systems.

- Poletop Pins
- Vertical Pins
- Horizontal Pins
- Apparatus Mounts
- Deadend Arms
- Guy Strain Insulators



Connectors and Crimping Tools

Transmission, distribution and substation products, including connectors, clamps, line and tower hardware.

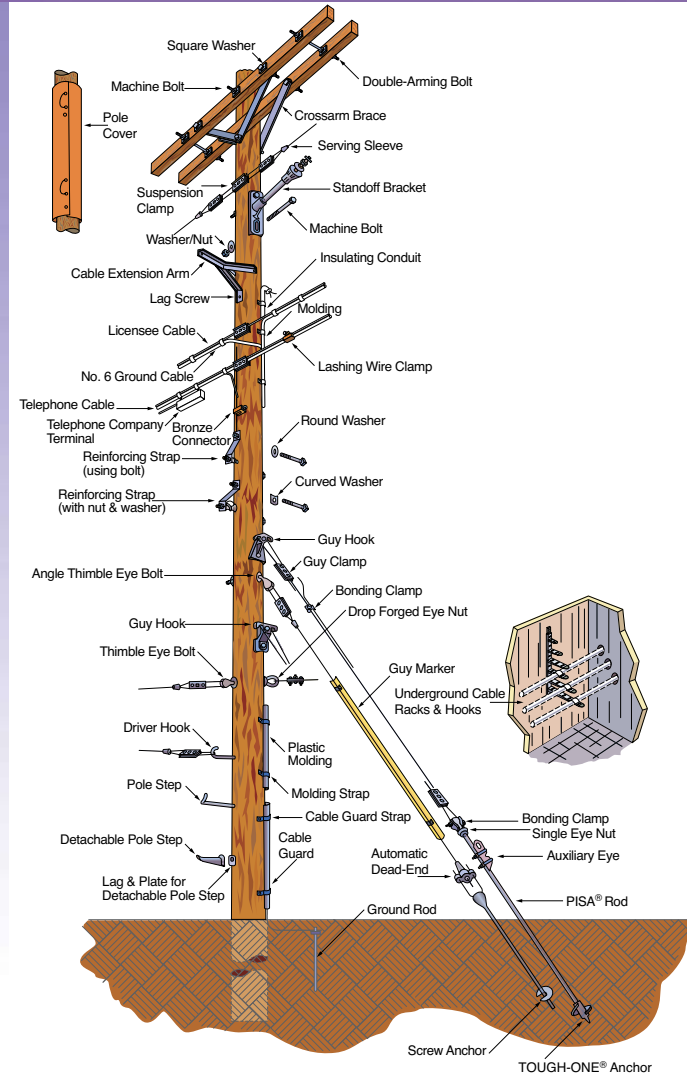
- Hot Line Clamps
- Stirrup Clamps
- Suspension Clamps
- Deadend Clamps
- Substation Connectors
- Connector Die Sets
- Crimping Tools
- Vise-Type Connectors
- Versa-Crimp® Tools



Transmission, Distribution, & Substation Power Switches

- Center Break
- Center Break "V"
- Side Break
- Vertical Break
- Double Center Break

Outside Plant



HUBBELL®
Power Systems

TRANSMISSION DISTRIBUTION SUBSTATION & UNDERGROUND PRODUCTS

www.hubbellpowersystems.com
hpsliterature@hps.hubbell.com

UNITED STATES
CANADA & INTERNATIONAL
HUBBELL POWER SYSTEMS, INC.
210 N. Allen Street
Centralia, Mo 65240-1395
Phone: 1-573-682-5521
Fax: 1-573-682-8714
E-mail: hpsliterature@hps.hubbell.com

MEXICO
HUBBELL DE MEXICO, S.A. DE C.V.
Av. Insurgentes Sur # 1228, Piso 8
Col. TiacoquemecatI Del Valle
Mexico, D.F. 03200
Phone: 52-55-9151-9999
Fax: 52-55-9151-9988
Website: hubbell.com.mx



HUBBELL[®]
Power Systems