



Juno® Trac-Lites™ Line Voltage Spotlights

A variety of line voltage spotlights suitable for various applications

juno®



R711



R712



R713



R714

Juno® Line Voltage Spotlights PAR16/MR16 GU10

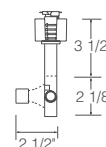
R711 Open Back Spotlight



120V, 35-50W PAR16/MR16 GU10

Aiming lock helps retain fixture position during relamping.

Finishes: White (WH), Black (BL)



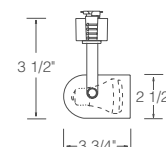
R712 Round Back Cylinder



120V, 35-50W PAR16/MR16 GU10

With black bezel.

Finishes: White (WH), Black (BL)



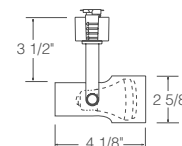
R713 Step Cylinder



120V, 35-50W PAR16/MR16 GU10

With black bezel.

Finishes: White (WH), Black (BL)



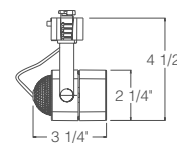
R714 Cast Cube



120V, 35-50W PAR16/MR16 GU10

Aiming locks help retain fixture position during relamping.

Finishes: White (WH), Black (BL),
Satin Chrome (SC), Painted Bronze (BZ)





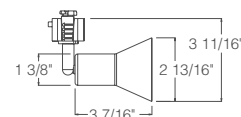
Juno® Line Voltage Spotlights PAR16/MR16 GU10

R715 Flare



120V, 35-50W PAR16/MR16 GU10

Finishes: White (WH), Black (BL),
Satin Chrome (SC), Painted Bronze (BZ)

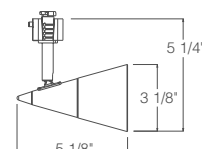


R716 Glass Cone



120V, 35-50W PAR16/MR16 GU10

Finishes: White (WH) with Opal Frost glass,
Black (BL) with Opal Frost glass, Satin
Chrome (SC) with Opal Frost glass, Painted
Bronze (BZ) with Amber Frost glass

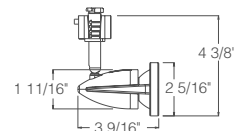


R717 Odyssey



120V, 35-50W PAR16/MR16 GU10

Finishes: White (WH), Black (BL),
Satin Chrome (SC), Painted Bronze (BZ)



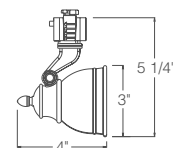
R718 Bell



120V, 35-50W PAR16/MR16 GU10

Integral baffle and deep lamp regression
for optimal lamp shielding. Aiming locks
help retain fixture position during relamping.

Finishes: White (WH), Black (BL), Satin
Chrome (SC), Hand-Rubbed Bronze (BZ)



All Trac-Lites™ line voltage fixtures feature an on/off switch and are also compatible with Juno Trac-Master™ single and two-circuit trac systems.



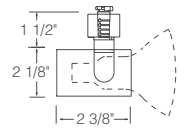
Juno® Line Voltage Spotlights Universal, Flared Gimbals and Flared Steps

R541 Universal



35-50W PAR20/35-75W PAR30

Finishes: White (WH), Black (BL)

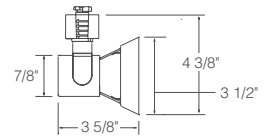


R531 Flared Gimbal



35-50W PAR20

Finishes: White (WH), Black (BL),
Satin Chrome (SC) with Black yoke
and adapter, Painted Bronze (BZ)

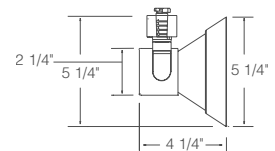


R532 Flared Gimbal



35-75W PAR30

Finishes: White (WH), Black (BL),
Satin Chrome (SC) with Black yoke
and adapter, Painted Bronze (BZ)

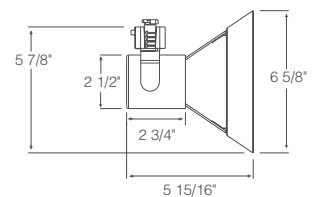


R530 Flared Gimbal



45-120W PAR38

Finishes: White (WH), Black (BL),
Satin Chrome (SC) with Silver yoke
and adapter, Painted Bronze (BZ)

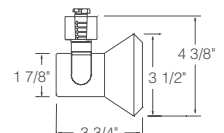


R551 Flared Step



35-50W PAR20

Finishes: White (WH), Black (BL),
Satin Chrome (SC) with Black yoke
and adapter, Painted Bronze (BZ)



All Trac-Lites™ line voltage fixtures feature an on/off switch and are also compatible with Juno Trac-Master™ single and two-circuit trac systems.



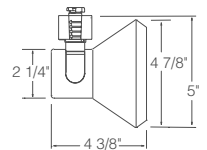
Juno® Line Voltage Spotlights Universal, Flared Gimbals and Flared Steps

**R552
Flared Step**



35-75W PAR30

Finishes: White (WH), Black (BL),
Satin Chrome (SC) with Black yoke
and adapter, Painted Bronze (BZ)

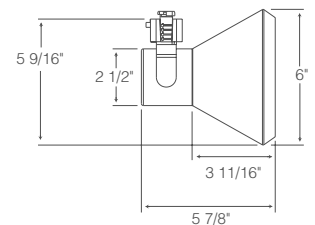


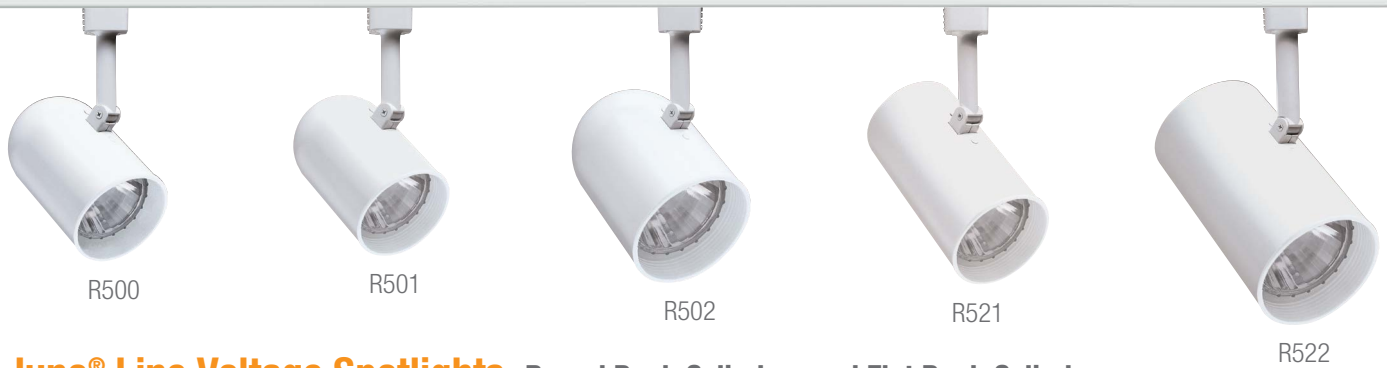
**R550
Flared Step**



45-120W PAR38

Finishes: White (WH), Black (BL),
Satin Chrome (SC) with Silver yoke
and adapter, Painted Bronze (BZ)





Juno® Line Voltage Spotlights Round Back Cylinders and Flat Back Cylinders

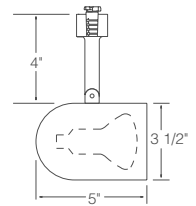
R500
Round Back
Cylinder



30-50W R20/35-50W PAR20

Without baffle

Finishes: White (WH), Black (BL)



R501
Round Back
Cylinder



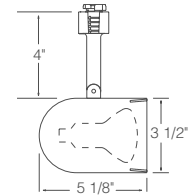
30-50W R20/35-50W PAR20

R501B – With black baffle

Finishes: White (WH), Black (BL),
Polished Brass (PB), Painted Bronze (BZ)

R501W – With white baffle

Finish: White (WH)



R502
Round Back
Cylinder



45-65W BR30/35-75W PAR30/PAR30L

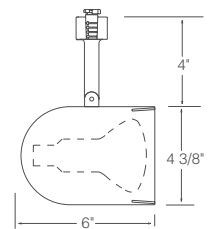
(Short neck PAR30 requires
T599 Socket Extender).

R502B – With black baffle

Finishes: White (WH), Black (BL)
Painted Bronze (BZ)

R502W – With white baffle

Finish: White (WH)



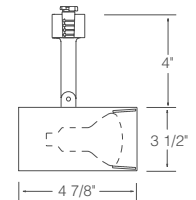
R521W
Flat Back
Cylinder



30-50W R20/35-50W PAR20

With white baffle

Finish: White (WH)



R522W
Flat Back
Cylinder



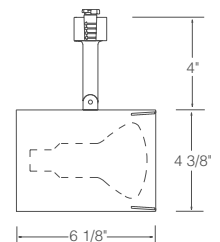
45-65W BR30/35-75W

PAR30/PAR30L

(Short neck PAR30 requires
T599 Socket Extender).

With white baffle

Finish: White (WH)





Juno® Line Voltage Spotlights Step Cylinders and Open Backs

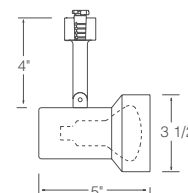
**R510
Step Cylinder**



30-50W R20/35-50W PAR20

Without baffle

Finishes: White (WH), Black (BL)



**R511
Step Cylinder**



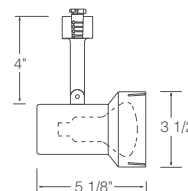
30-50W R20/35-50W PAR20

R511B – With black baffle

Finishes: White (WH), Black (BL),
Polished Brass (PB)

R511W – With white baffle

Finish: White (WH)



**R512
Step Cylinder**



45-65W BR30/35-75W PAR30/PAR30L

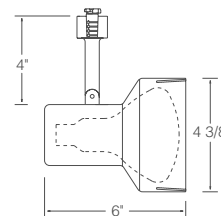
(Short neck PAR30 requires
T599 Socket Extender).

R512B – With black baffle

Finishes: White (WH), Black (BL)

R512W – With white baffle

Finish: White (WH)

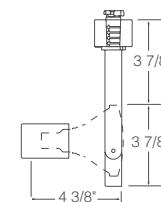


**R533
Open Back
Spotlight**



35-75W PAR30

Finishes: White (WH), Black (BL)

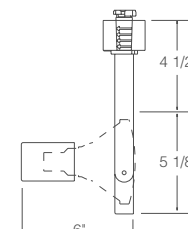


**R534
Open Back
Spotlight**



45-120W PAR38

Finishes: White (WH), Black (BL)



All Trac-Lites™ line voltage fixtures feature an on/off switch and are also compatible with Juno Trac-Master™ single and two-circuit trac systems.



Juno® Trac-Lites™

Juno Trac-Lites bring you all the style, quality and lighting performance Juno is famous for at affordable prices that can be tailored to any budget.

Juno Trac-Lites offer a total system, featuring a wide assortment of low voltage and line voltage track fixtures, decorative pendants, system components and track kits. Track fixtures are available in all the popular classics and in exciting contemporary designs, from metal and glass cones to barn doors, rockets, and cubes.

For added versatility, all Trac-Lites fixtures are compatible with Juno Trac-Master™ Trac systems and all Juno Trac-Master fixtures may be used on Trac-Lites Trac systems.



The perfect blend of form, function and value, Juno Trac-Lites is the system of choice for illuminating many of today's most stylish interiors. No matter what your application, you are sure to find the solutions you need at prices you can afford.



©2017 Acuity Brands Lighting, Inc. The marks appearing in this catalog are trademarks of Acuity Brands Lighting, Inc. Products shown in this brochure may be covered by U.S. and international patents and patents pending. Specifications subject to change without notice. Printed in the U.S.A.