

EDS and EFS control stations

EDSCM modular multi-gang control device bodies

Cl. I, Div. 1, Groups C, D^A
Cl. I, Div. 2, Groups B, C, D
Cl. II, Div. 1, Groups E, F, G
Cl. II, Div. 2, Groups F, G
Cl. III
NEMA 3, 7B (Div. 2) CD, 9EFG

Explosionproof
Dust-ignitionproof
Raintight
Wet Locations

4C

For use with DSD/DSDX device cover sub-assemblies.

Applications:

Modular control device bodies are for surface mounting combinations of control device equipment for use in:

- Industrial areas such as chemical plants, oil and gas refineries, paint and varnish manufacturing plants, gasoline bulk loading terminals, grain elevators, grain processing industries, coal processing or handling areas where atmospheres may contain hazardous gases or dusts, and arcing of enclosed devices must not ignite the surrounding atmosphere
- Conjunction with magnetic starters or contactors for remote control and monitoring motors
- Manual starting and stopping of small AC or DC motors
- Controlling and supplying energy to portable electrical devices, such as motor generator sets, compressors, conveyors, portable tools, etc.

Features:

EDSCM modular control stations have many distinct advantages over multiple individual units:

- Reduce installation costs – a multi-gang device assembly can be installed in less time than several single-gang units
- Seals not required between gangs
- Improved appearance – no exposed conduit runs between devices
- Lightweight – 15-gang aluminum device body can be installed by one person
- Mounting feet are provided on the top and bottom of every gang to facilitate installation
- Two- and three-gang tandem bodies have 1¼" through feed inward horizontal hubs and 1" or 2" vertical through feed hubs; pipe plugs are installed in one horizontal hub and both vertical hubs
- Single-gang device bodies have 1" through feed inward horizontal hubs and ¾" through feed vertical hubs; pipe plugs are installed in one horizontal hub and both vertical hubs
- All hubs are taper tapped and have integral bushings
- Close nipples, which are used to join two or more device bodies together, are furnished with EDSCM21, 32, 33, 62 and 63 units
- Any combination of bodies can be joined together horizontally

Certifications and compliances:

(When used with DSD device sub-assemblies)^A:

NEC/CEC:

- Class I, Divisions 1 & 2, Groups C, D
- Class I, Division 2, Groups B, C, D
- Class II, Division 1, Groups E, F, G
- Class II, Division 2, Groups F, G
- Class III

UL standard:

- UL1203

CSA standard:

- C22.2 No. 30

Environmental ratings:

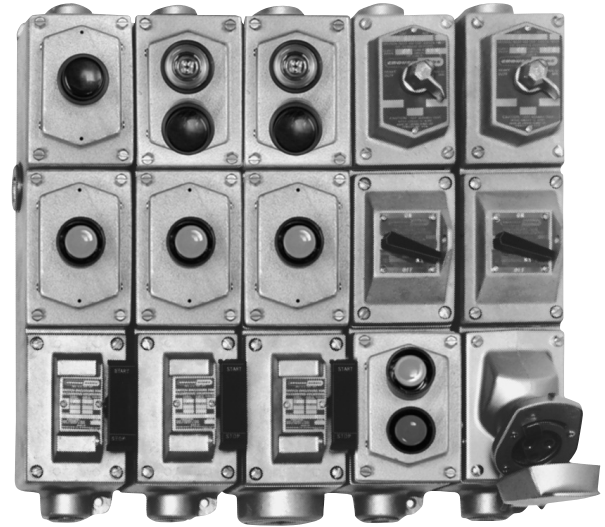
- NEMA/EMAC 3, 7B (Div. 2) CD, 9EFG

^AWhen a CPS receptacle cover device is used, the assembly meets requirements for Class I, Groups C and D areas only.

^BEDSCM32 and EDSCM62 will not accept covers with suffixes S697 or S701.

^CBottom gang opening will accept covers with suffixes S697 or S701.

In Class I areas, all conduit runs entering bodies must be sealed. As many as five bodies can be joined horizontally without an intervening seal.



Standard material:

- Copper-free aluminum

Standard finish:

- Natural

Ordering information:



EDSCM21 EDSCM32^B EDSCM62^B EDSCM33^C EDSCM63^C

Type	Hub size	Cat. # Through feed
Single-gang	¾"	EDSCM21
Two-gang tandem	1"	EDSCM32
Two-gang tandem	2"	EDSCM62
Three-gang tandem	1"	EDSCM33
Three-gang tandem	2"	EDSCM63

EDS and EFS control stations

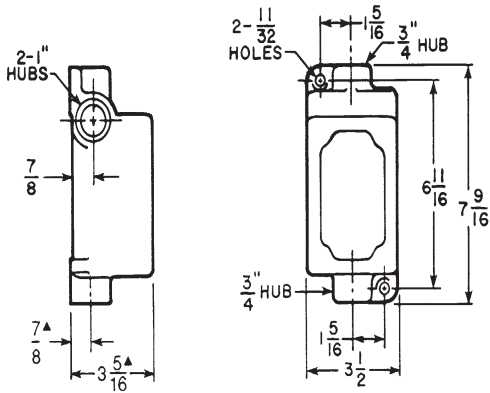
EDSCM modular multi-gang control device bodies

Cl. I, Div. 1, Groups C, D[Ⓛ]
Cl. I, Div. 2, Groups B, C, D
Cl. II, Div. 1, Groups E, F, G
Cl. II, Div. 2, Groups F, G
Cl. III
NEMA 3, 7B (Div. 2) CD, 9EFG

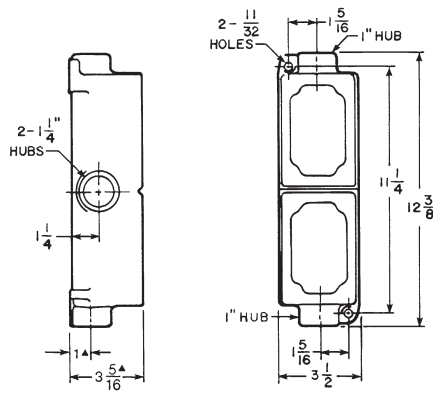
Explosionproof
Dust-ignitionproof
Raintight
Wet Locations

4C

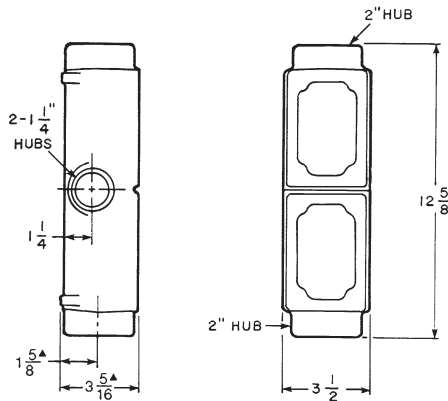
Dimensions[ⓔ] (in inches):



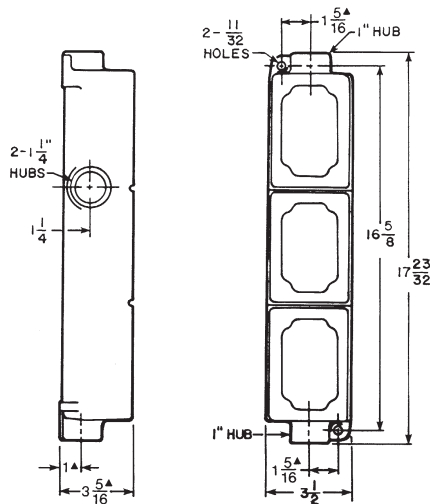
EDSCM21



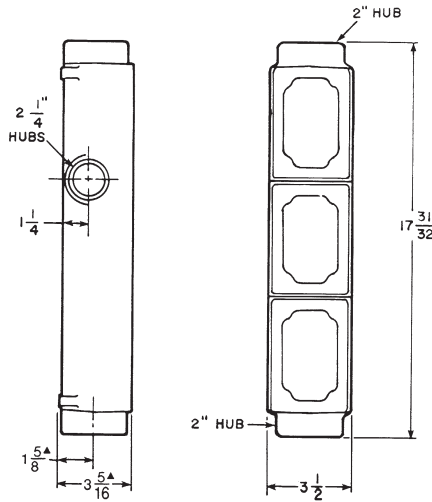
EDSCM32



EDSCM62



EDSCM33



EDSCM63

[Ⓛ]When a CPS receptacle cover device is used, the assembly meets requirements for Class I, Groups C and D areas only.

[ⓔ]Dimensions are approximate, not for construction purposes.