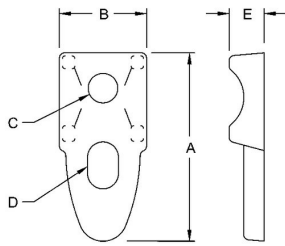




RIGID CLAMP BACKS

Clamp Backs Malleable Iron
N/A

B46



Catalog #: 1346

APPLICATIONS

For use with RACO 1300 Series straps to permit space between the conduit and the mounting surface
Use of clamp backs in outdoor locations can prevent the buildup of snow and rain between the conduit and the mounting surface

PRODUCT FEATURES

All malleable construction insures durability and mechanical protection
Elongated bolt holes make alignment with straps easy
Zinc electro plated for added corrosion protection
N/A

UL LISTED

UL Listed E195968

GENERAL PRODUCT INFORMATION

Rigid/IMC Size: 1-1/2 in.
EMT Size: 2 in.

DRAWING DIMENSIONS

Dimension A: 3-29/32 in.
Dimension B: 1-39/64 in.
Dimension C: 9/16 in.
Dimension D: 9/16 in. x 15/16 in.
Dimension E: 1/2 in.

PACKAGING

Package Type: Carton
Ship Carton Qty.: 25
Product UPC-A Labeled: No
Weight (Lbs. Per/C): 24.50
Ship Carton Length (in.): 7.70
Ship Carton Width (in.): 5.60
Ship Carton Height (in.): 5.80
Ctn Weight (Lbs.): 6.13
UPC Number: 050169013465
I2of5: 50050169013460