

**HUBBELL**<sup>®</sup>  
Premise Wiring

Fiber  
Connectivity  
Product Guide



# FIBER Solutions

Hubbell's end-to-end fiber solutions support a wide range of cabling applications, from small building backbone to large data center infrastructure. Fiber cabling networks begin with a reliable connectivity solution, from basic field termination to high density, pre-terminated systems.

For a complete interconnect system, Hubbell's advanced FCR Series fiber enclosures are designed for maximum flexibility and user-friendly access. A full complement of interconnect panels, MPO cassettes and high density solutions provide a scalable infrastructure to support the connected enterprise.

Hubbell BIDnet pre-terminated MPO cable assemblies are custom made to order with fast delivery for any 10G or 40G/100G-ready system installation. Quality, performance and reliable delivery define Hubbell's reputation for supplying pre-terminated cabling infrastructure.



## FIBERHUBB™ MPO Cassettes: OC Series

Hubbell's FIBERHUBB OC Series MPO cassettes are modular pre-terminated interconnect transitions, with a connector panel in front and a rear 12-fiber MPO male output receptacle. LC 24-port cassettes have two 12-fiber MPO receptacles. Used in conjunction with pre-terminated fiber trunk assemblies, this solution eliminates field termination for a rapid fiber channel deployment in the data center. OC series cassettes snap into any FCR series enclosure for a total system solution.



LC Quad, 24-Port, OM3  
OCLCQ50G



SC Duplex, 12-Port, OM3  
OCSC50G



LC Duplex, 12-Port, OS2  
OCLCSM



LC Quad, 24-Port, OM3  
OCLCQ50GC

### HUBBELL FIBERHUBB MPO CASSETTES

#### Type A Polarity

| Fiber Type  | Color  | SC Duplex       | ST-Style      | LC Duplex 12F     | LC Duplex 24F*     | LC Quad 24F*       |
|-------------|--------|-----------------|---------------|-------------------|--------------------|--------------------|
| 50µm, OM2   | Black  | <b>OCSC50</b>   | <b>OCST50</b> | <b>OCLC50</b>     | <b>OCLCD50</b>     | <b>OCLCQ50</b>     |
| 50µm, OM3   | Aqua   | <b>OCSC50G</b>  | -             | <b>OCLC50G</b>    | <b>OCLCD50G</b>    | <b>OCLCQ50G</b>    |
| 50µm, OM4   | Aqua   | <b>OCSC50G4</b> | -             | <b>OCLC50G4</b>   | <b>OCLCD50G4</b>   | <b>OCLCQ50G4</b>   |
| 50µm, OM4   | Violet | -               | -             | <b>OCLC50G4VI</b> | <b>OCLCD50G4VI</b> | <b>OCLCQ50G4VI</b> |
| 62.5µm, OM1 | Beige  | <b>OCSC62</b>   | <b>OCST62</b> | <b>OCLC62</b>     | <b>OCLCD62</b>     | <b>OCLCQ62</b>     |
| SM, OS2     | Blue   | <b>OCSCSM</b>   | <b>OCSTSM</b> | <b>OCLCSM</b>     | <b>OCLCDSM</b>     | <b>OCLCQSM</b>     |

Note: Type A polarity is straight 1 to 1 fiber mapping (no pair crossing).

### HUBBELL FIBERHUBB MPO CASSETTES

#### Type C Polarity

| Fiber Type | Color  | SC Duplex | ST-Style | LC Duplex 12F      | LC Duplex 24F*      | LC Quad 24F*        |
|------------|--------|-----------|----------|--------------------|---------------------|---------------------|
| 50µm, OM3  | Aqua   | -         | -        | <b>OCLC50GC</b>    | <b>OCLCD50GC</b>    | <b>OCLCQ50GC</b>    |
| 50µm, OM4  | Aqua   | -         | -        | <b>OCLC50G4C</b>   | <b>OCLCD50G4C</b>   | <b>OCLCQ50G4C</b>   |
| 50µm, OM4  | Violet | -         | -        | <b>OCLC50G4CVI</b> | <b>OCLCD50G4CVI</b> | <b>OCLCQ50G4CVI</b> |

Note: Type C polarity is crossed-pair fiber mapping (1 to 2; 2 to 1).

**Standards**

- TIA-568.3, TIA-604-FOCIS
- Telcordia GR-326-CORE, Telcordia GR-409
- ANSI/ICEA S-83-596
- IEEE 802.3: 10G, 40G, 100G applications

**MPO Connector Specifications**

- Gender: female has no alignment pins; male has pins
- MM insertion loss: <0.50dB typical
- SM insertion loss: <0.55dB (0.35dB typical)
- MM return loss: >26dB
- SM return loss: >50dB
- Polarity: TIA-568-C.3, Type A, B or C

**Single Fiber Connector Specifications**

- MM insertion loss: <0.50dB (0.35dB typical)
- SM insertion loss: <0.35dB (0.15dB typical)
- MM return loss: >26dB
- SM return loss: >50dB (UPC), >65dB (APC)
- Ferrule material: zirconia ceramic
- Mating durability: 500 cycles



LC Mesh Bundle Trunk, OM3, 48-Strand



LC Fan-Out Trunk, OM3, 48-Strand

**Fiber Trunk Assemblies** HUBBELL **BIDnet**

Hubbell's reputation for delivering high reliability cable assemblies into large scale data centers extends to financial, government, medical and educational institutions. Custom engineered to order in any user-specified configuration, Hubbell pre-terminated fiber trunk assemblies are delivered 100% factory tested using premium quality cable and components. Local manufacturing provides fast, reliable delivery, and mission critical performance to our valued data center clients.

**40Gb/s and 100Gb/s MPO Fiber Cord Options**

- Connectors: MPO male or female, 12-fiber (40G) or 24-fiber (100G)
- Fiber types: OM3, OM4
- 40Gb/s fiber strand count: 12, 24, 48, 72 and 96 fibers
- 100Gb/s fiber strand count: 24, 48, 72 and 96 fibers
- Cable: plenum or riser
- Polarity: 40GBASE-SR4 or 100GBASESR10

**MPO Fiber Cord Options**

- Connectors: MPO male or female
- Fiber types: OM1, OM2, OM3, OM4, OS2
- Fiber strand count: 12, 24, 48, 72, 96 and 144 fibers
- Cable: plenum or riser, armored or non-armored
- Polarity: TIA-568.3 Type A, B or C



MPO 48-Strand, OM3  
FPCPMT48M3L20FN

**Mesh Bundle Trunk Options (2.0mm duplex zip cord)**

- Connectors: LC/APC, MSFP, SC, SC/APC, ST, FC, FC/APC
- Fiber types: OM1, OM2, OM3, OM4, OS2
- Fiber strand count: 6, 12, 24, 48, 72 and 96 fibers
- Cable: plenum or riser
- Outer sheath: polyester mesh

**Transition Assembly Options**

- Connectors: MTP female to LC or SC duplex
- Fiber types: 50/OM3, 50/OM4, SM/OS2
- Fiber strand count: 12, 24 and 48 fibers
- Cable: plenum, riser or LSZH (armored or non-armored)
- Polarity: TIA-568.3, Type A, B or C



MPO 12-Strand, OS2  
FPCPMTPS3FN

**Distribution Fan-Out Trunk Options**

- Connectors: LC/APC, MSFP, SC, SC/APC, ST, FC, FC/APC
- Fiber types: OM1, OM2, OM3, OM4, OS2
- Fiber strand count: 6, 12, 24, 48, 72 and 96 fibers
- Cable: plenum or riser, armored or non-armored
- Fan-out: 2.0mm duplex furcation tubing (simplex for OS2)

**Channel Application Distance Limits**

- OM3 40G/100G limit: 100m (328ft)
- OM4 40G/100G limit: 150m (492ft)
- OM3/10G limit: 300m (984ft)
- OM4/10G limit: 550m (1,804ft)

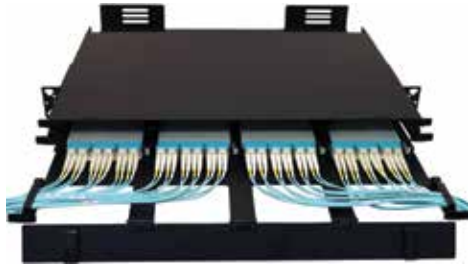


MPO-LC Hydra, OM3  
FHPMTLC3M20F

All BIDnet fiber trunk assemblies are custom made-to-order items. Please call our inside sales team for price and lead time. Refer to product data sheets for nomenclature and detailed design information. Channel application distance limits apply.

# FIBERHUBB™ Duplex Fiber Patch Cords

Fiber patch cords provide connections from the work area to the wall outlet, or from active equipment to the patch panel. These applications include connecting to network interface cards (NIC), or to a fiber hub, router or switch. Cords are available OM1, OM2, OM3, OM4 and OS2 fibers. All patch cords are factory polished and 100% tested for superior performance. OM3, OM4 and OS2 fiber cords with bend-insensitive fiber support 10GbE applications.



## Standards

- TIA-568.3
- TIA-604-FOCIS
- Telcordia GR-326-CORE

## HUBBELL FIBERHUBB FIBER PATCH CORDS SC and ST Duplex

### SC to SC

| Description          | Color  | Riser Catalog Number   | Plenum Catalog Number  |
|----------------------|--------|------------------------|------------------------|
| SC to SC, 62.5, OM1  | Orange | <b>DFRCSCSCCyyMM</b>   | <b>DFPCSCSCCyyMM</b>   |
| SC to SC, 50, OM2    | Orange | <b>DFRCSCSCDyyMM</b>   | <b>DFPCSCSCDyyMM</b>   |
| SC to SC, 50, OM3    | Aqua   | <b>DFRCSCSCEyyMM</b>   | <b>DFPCSCSCEyyMM</b>   |
| SC to SC, SM, OS2    | Yellow | <b>DFRCSCSCSyySM</b>   | <b>DFPCSCSCSyySM</b>   |
| SCA to SCA, OS2, APC | Yellow | <b>DFRCSCASCASyySM</b> | <b>DFPCSCASCASyySM</b> |

### ST to ST

|                     |        |                      |                      |
|---------------------|--------|----------------------|----------------------|
| ST to ST, 62.5, OM1 | Orange | <b>DFRCSTSTCyyMM</b> | <b>DFPCSTSTCyyMM</b> |
| ST to ST, 50, OM2   | Orange | <b>DFRCSTSTDyyMM</b> | <b>DFPCSTSTDyyMM</b> |
| ST to ST, 50, OM3   | Aqua   | <b>DFRCSTSTEyyMM</b> | <b>DFPCSTSTEyyMM</b> |
| ST to ST, SM, OS2   | Yellow | <b>DFRCSTSTSyyMM</b> | <b>DFPCSTSTSyyMM</b> |

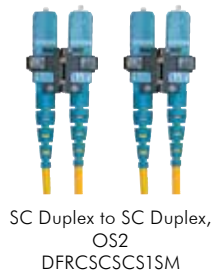
### ST to SC

|                     |        |                      |                      |
|---------------------|--------|----------------------|----------------------|
| ST to SC, 62.5, OM1 | Orange | <b>DFRCSTSCCyyMM</b> | <b>DFPCSTSCCyyMM</b> |
| ST to SC, 50, OM2   | Orange | <b>DFRCSTSCDyyMM</b> | <b>DFPCSTSCDyyMM</b> |
| ST to SC, 50, OM3   | Aqua   | <b>DFRCSTSCEyyMM</b> | <b>DFPCSTSCEyyMM</b> |
| ST to SC, SM, OS2   | Yellow | <b>DFRCSTSCSyySM</b> | <b>DFPCSTSCSyySM</b> |

### MSFP to LC

|                     |      |   |                      |
|---------------------|------|---|----------------------|
| MSFP to LC, 50, OM3 | Aqua | - | <b>MSFPLC50G3Myy</b> |
| MSFP to LC, 50, OM4 | Aqua | - | <b>MSFPLC50G4Myy</b> |

Replace **yy** with standard lengths of **1, 2, 3, 5** or **10** meters. Longer plenum lengths available up to 25 meters.  
Note: MSFP is LC duplex with 5.25mm pitch for Brocade® equipment. Standard LC duplex pitch is 6.25mm.



SC Duplex to SC Duplex,  
OS2  
DFRCSCSCS1SM



ST to ST Duplex,  
OM1  
DFRCSTSTC1MM



SC Duplex to ST-style Duplex,  
OS2  
DFRCSTSCS1SM



MSFP to LC  
MSFPLC50G3M1

Brocade is a registered trademark of Brocade Communications Systems, Inc.

**HUBBELL FIBERHUBB FIBER PATCH CORDS**  
LC Duplex

**Multimode**

| Description         | Cable Color | Riser Catalog Number | Plenum Catalog Number |
|---------------------|-------------|----------------------|-----------------------|
| LC to LC, 50, OM4   | Aqua        | <b>DFRCLCLCFyyMM</b> | <b>DFPCLCLCFyyMM</b>  |
| LC to SC, 50, OM4   | Aqua        | <b>DFRCLCSCFyyMM</b> | <b>DFPCLCSCFyyMM</b>  |
| LC to LC, 50, OM3   | Aqua        | <b>DFRCLCLCEyyMM</b> | <b>DFPCLCLCEyyMM</b>  |
| LC to SC, 50, OM3   | Aqua        | <b>DFRCLCSCEyyMM</b> | <b>DFPCLCSCEyyMM</b>  |
| LC to LC, 50, OM2   | Orange      | <b>DFRCLCLCDyyMM</b> | <b>DFPCLCLCDyyMM</b>  |
| LC to SC, 50, OM2   | Orange      | <b>DFRCLCSCDyyMM</b> | <b>DFPCLCSCDyyMM</b>  |
| LC to LC, 62.5, OM1 | Orange      | <b>DFRCLCLCCyyMM</b> | <b>DFPCLCLCCyyMM</b>  |
| LC to SC, 62.5, OM1 | Orange      | <b>DFRCLCSCCyyMM</b> | <b>DFPCLCSCCyyMM</b>  |
| LC to ST, 62.5, OM1 | Orange      | <b>DFRCLCSTCyyMM</b> | <b>DFPCLCSTCyyMM</b>  |

**Singlemode**

|                                   |        |                        |                        |
|-----------------------------------|--------|------------------------|------------------------|
| LC to LC, singlemode, OS2         | Yellow | <b>DFRCLCLCSyySM</b>   | <b>DFPCLCLCSyySM</b>   |
| LC/APC to LC/APC, singlemode, OS2 | Yellow | <b>DFRCLCALCASyySM</b> | <b>DFPCLCALCASyySM</b> |
| LC/APC to SC/APC, singlemode, OS2 | Yellow | <b>DFRCLCASCASyySM</b> | <b>DFPCLCASCASyySM</b> |
| LC to ST, singlemode, OS2         | Yellow | <b>DFRCLCSTSyySM</b>   | <b>DFPCLCSTSyySM</b>   |
| LC to SC, singlemode, OS2         | Yellow | <b>DFRCLCSCSyySM</b>   | <b>DFPCLCSCSyySM</b>   |

Replace **yy** with standard stock lengths of **1, 2, 3, 4** or **5** meters.

Longer lengths 6 to 25 meters available in Plenum. Longer lengths 5 to 10 meters available in Riser. Custom lengths quoted to order.



LC to LC Duplex, OM3  
DFPCLCLCE1MM



LC to LC Duplex, OS2  
DFPCLCLCS1SM

## Patch Cord Installation Guidelines

- Add proper cable slack when specifying patch cord lengths.
- For long term reliability, comply with minimum cable bend radius limits.
- Patch cords entering the enclosures should have adequate slack to allow opening of the drawers.
- Use the appropriate cable management for bundled patch cords.

**High Density LC Uniboot Patch Cords**

| Description       | Cable Color | Plenum Catalog Number  |
|-------------------|-------------|------------------------|
| LC to LC, 50, OM3 | Aqua        | <b>HDPCLC50G3Myy</b>   |
| LC to SC, 50, OM3 | Aqua        | <b>HDPCLCSC50G3Myy</b> |
| LC to LC, 50, OM4 | Aqua        | <b>HDPCLC50G4Myy</b>   |
| LC to SC, 50, OM4 | Aqua        | <b>HDPCLCSC50G4Myy</b> |
| LC to LC, SM OS2  | Yellow      | <b>HDPCLCSMyy</b>      |
| LC to LC, SM OS2  | Yellow      | <b>HDPCLCSCSMyy</b>    |

Replace **yy** with standard stock lengths of **1, 2, 3, 5** or **10** meters.



HD LC Uniboot, OM3  
HDPCLC50G3M1

# Pigtails

Hubbell fiber optic pigtails are manufactured with high quality connectors, factory polished for low insertion loss and low back reflection. Pigtails are available in LC, SC, FC and ST style versions with both singlemode and multimode 900µm buffered fiber types. Buffered fibers are color-coded by application. All pigtails are 100% factory tested for insertion loss.



LC Singlemode, OS2  
FPLCS3SM



SC Singlemode, OS2  
FPSCS3SM



ST Multimode, OM1  
FPSTC3MM



FC Singlemode, OS2  
FPFCS3SM

## SINGLE FIBER PIGTAILS 900 micron buffer, 3 meter length

### LC

|                 |                 |                 |                 |                 |                  |
|-----------------|-----------------|-----------------|-----------------|-----------------|------------------|
| OM1             | OM2             | OM3             | OM4             | OS2             | OS2/APC          |
| Orange          | Orange          | Aqua            | Aqua            | Yellow          | Yellow           |
| <b>FPLCC3MM</b> | <b>FPLCD3MM</b> | <b>FPLCE3MM</b> | <b>FPLCF3MM</b> | <b>FPLCS3SM</b> | <b>FPLCAS3SM</b> |

### SC

|                 |                 |                  |                 |                 |                  |
|-----------------|-----------------|------------------|-----------------|-----------------|------------------|
| OM1             | OM2             | OM3              | OM4             | OS2             | OS2/APC          |
| Orange          | Orange          | Aqua             | Aqua            | Yellow          | Yellow           |
| <b>FPSCC3MM</b> | <b>FPSCD3MM</b> | <b>FPSC E3MM</b> | <b>FPSCF3MM</b> | <b>FPSCS3SM</b> | <b>FPSCAS3SM</b> |

### ST

|                 |                 |                 |                 |                 |          |
|-----------------|-----------------|-----------------|-----------------|-----------------|----------|
| OM1             | OM2             | OM3             | OM4             | OS2             | OS2/APC  |
| Orange          | Orange          | Aqua            | Aqua            | Yellow          | Yellow   |
| <b>FPSTC3MM</b> | <b>FPSTD3MM</b> | <b>FPSTE3MM</b> | <b>FPSTF3MM</b> | <b>FPSTS3SM</b> | <b>-</b> |

### FC

|                 |                 |                 |                 |                 |                  |
|-----------------|-----------------|-----------------|-----------------|-----------------|------------------|
| OM1             | OM2             | OM3             | OM4             | OS2             | OS2/APC          |
| Orange          | Orange          | Aqua            | Aqua            | Yellow          | Yellow           |
| <b>FPFCC3MM</b> | <b>FPFCD3MM</b> | <b>FPFCE3MM</b> | <b>FPFCF3MM</b> | <b>FPFCS3SM</b> | <b>FPFCAS3SM</b> |

Note: OM3, OM4 and OS2 fibers are bend-insensitive.  
OS2/APC pigtails have a Green boot and Green SC or LC connector.

## 6- AND 12-FIBER PIGTAIL BUNDLES 900 micron buffer, 3 meter length

Catalog Number example: **FPBKR12LC3M** (12-strand, LC, OM3)



Pigtail Bundle, LC  
12-Strand, OS2  
FPBKR12LC6S

| Root Catalog Number              | Strand                  | Connector Type | Fiber Type                                |
|----------------------------------|-------------------------|----------------|---|
| <b>FPBKR</b>                     | <b>6</b> for 6-strand   | <b>LC</b>      | <b>1M</b> for 62.5 micron (OM1) multimode |
| Fiber Pigtail Bundle Kit (Riser) | <b>12</b> for 12-strand | <b>LCA</b>     | <b>2M</b> for 50 micron (OM2) multimode   |
|                                  |                         | <b>SC</b>      | <b>3M</b> for 50 micron (OM3) multimode   |
|                                  |                         | <b>SCA</b>     | <b>4M</b> for 50 micron (OM4) multimode   |
|                                  |                         | <b>ST</b>      | <b>6S</b> for singlemode (OS2)            |
|                                  |                         | <b>FC</b>      |   |
|                                  |                         | <b>FCA</b>     |   |

Buffer Color Code Sequence: Blue, Orange, Green, Brown, Slate, White, Red, Black, Yellow, Violet, Rose, Aqua



**LC ADAPTERS**

| Mount Type  | Type      | Zirconia Ceramic Sleeve |
|-------------|-----------|-------------------------|
| Snap Mount  | LC Duplex | <b>FALCDSC6xx</b>       |
| Screw Mount | LC Duplex | <b>FALCDSS6xx</b>       |
| Snap Mount  | LC Quad   | <b>FALCQSC6xx</b>       |
| Screw Mount | LC Quad   | <b>FALCQSS6xx</b>       |

xx = Color: **AQ** (Aqua), **BE** (Beige), **BK** (Black), **B** (Blue), **GN** (Green), **OR** (Orange), **R** (Red) or **Y** (Yellow)



LC Duplex, Screw Mount  
FALCDMS6AQ



LC Duplex, Snap Mount  
FALCDMC6B



SC Duplex, Screw Mount  
FASCDMS6B



SC Duplex, Snap Mount  
FASCDMC6GN



MPO, Screw Mount  
FAMTPSBK

**SC ADAPTERS**

| Mount Type  | Type       | Zirconia Ceramic Sleeve |
|-------------|------------|-------------------------|
| Snap Mount  | SC Duplex  | <b>FASCDSC6xx</b>       |
| Screw Mount | SC Duplex  | <b>FASCDSS6xx</b>       |
| Snap Mount  | SC Simplex | <b>FASCSSC12xx</b>      |
| Screw Mount | SC Simplex | <b>FASCSS12xx</b>       |

xx = Color: **AQ** (Aqua), **BE** (Beige), **BK** (Black), **B** (Blue), **GN** (Green), **OR** (Orange), **R** (Red) or **Y** (Yellow)

**MPO ADAPTERS**

**Standard Polarity**

| Mount Type  | Aqua            | Beige           | Black           | Green           | Violet          |
|-------------|-----------------|-----------------|-----------------|-----------------|-----------------|
| Snap Mount  | <b>FAMTPAQ</b>  | <b>FAMTPBE</b>  | <b>FAMTPBK</b>  | <b>FAMTPGN</b>  | <b>FAMTPVI</b>  |
| Screw Mount | <b>FAMTPSAQ</b> | <b>FAMTPSBE</b> | <b>FAMTPSBK</b> | <b>FAMTPSGN</b> | <b>FAMTPSVI</b> |

**Reversed Polarity**

|             | Gray              |
|-------------|-------------------|
| Snap Mount  | <b>FAMTPRPGY</b>  |
| Screw Mount | <b>FAMTPSRPGY</b> |

**LC and SC Adapters** FIBERHUBB™

Hubbell LC and SC adapters are made with high quality zirconia ceramic alignment sleeves in a precision, standards-compliant duplex housing with stainless steel retaining clip. Compatible with FSP panel blanks for a custom color coded solution. Zirconia is required for singlemode, and recommended for multimode for best performance. Phosphor bronze is suitable for multimode only.

**FSP ADAPTER PANELS**

Unloaded

| Style                        | Ports | Catalog Number  |
|------------------------------|-------|-----------------|
| SC Simplex, MPO or LC Duplex | 6     | <b>FSPSC6X</b>  |
| SC Simplex, MPO or LC Duplex | 8     | <b>FSPSC8X</b>  |
| SC Simplex, MPO or LC Duplex | 12    | <b>FSPSC12X</b> |
| SC Duplex or LC Quad         | 3     | <b>FSPSCD3X</b> |
| SC Duplex or LC Quad         | 4     | <b>FSPSCD4X</b> |
| SC Duplex or LC Quad         | 6     | <b>FSPSCD6X</b> |
| ST-Style                     | 6     | <b>FSPST6X</b>  |
| ST-Style                     | 8     | <b>FSPST8X</b>  |
| MTP-Style                    | 6     | <b>FSPSC6X</b>  |
| Blank                        | –     | <b>FSPB</b>     |
| JACK-PACK®                   | 4     | <b>FSPHD4X</b>  |
| JACK-PACK                    | 6     | <b>FSPHD6X</b>  |

JACK-PACK panels have standard keystone openings.



SC Duplex, 12-Port  
FSPSCD6X



SC Duplex, 6-Port  
FSPSCD3X



SC Simplex, 8-Port  
FSPSC8X



SC Simplex, 6-Port  
FSPSC6X

# FIBERHUBB™ FSP Adapter Panels

Hubbell FSP Series adapter panels are a standards compliant, snap-in design with high quality precision adapters. A wide range of adapter colors are available for custom color coding of secure networks. Zirconia is required for singlemode, and recommended for multimode, for best performance. Phosphor bronze is suitable for multimode only.



LC Duplex, 6-Port  
FSPLCDM3AQ



LC Duplex, 24-Port  
FSPLCDM12AQ



LC Quad, 24-Port  
FSPLCQS6Y



SC Duplex, 6-Port  
FSPSCDM3B



SC Duplex, 12-Port  
FSPSCDS6Y



ST/SC Duplex, 6-Port  
FSPSCST3



ST/SC Duplex, 12-Port  
FSPSCST6



SC/APC Simplex, 6-Port  
FSPSCA6



SC Simplex, 6-Port  
FSPSC6



MPO, 6-Port  
FSPMTPAQ6

## LC DUPLEX, LC QUAD AND SC DUPLEX

### LC Duplex

| Ports | Phosphor Bronze, Multimode | Zirconia Ceramic, Single/Multimode |
|-------|----------------------------|------------------------------------|
| 6     | <b>FSPLCDM3xx</b>          | <b>FSPLCDS3xx</b>                  |
| 12    | <b>FSPLCDM6xx</b>          | <b>FSPLCDS6xx</b>                  |
| 24    | <b>FSPLCDM12xx</b>         | <b>FSPLCDS12xx</b>                 |

### LC Quad

|    |                    |                    |
|----|--------------------|--------------------|
| 12 | <b>FSPLCQM3xx</b>  | <b>FSPLCQS3xx</b>  |
| 24 | <b>FSPLCQM12xx</b> | <b>FSPLCQS12xx</b> |

### SC Duplex

|    |                    |                    |
|----|--------------------|--------------------|
| 6  | <b>FSPSCDM3xx</b>  | <b>FSPSCDS3xx</b>  |
| 12 | <b>FSPSCDM12xx</b> | <b>FSPSCDS12xx</b> |

xx = Color: **AQ** (Aqua), **BE** (Beige), **BK** (Black), **B** (Blue), **GN** (Green), **OR** (Orange), **R** (Red) or **Y** (Yellow)

## SC TO ST DUPLEX AND ST DUPLEX

| Ports | Type            | Color | Phosphor Bronze | Zirconia Ceramic  |
|-------|-----------------|-------|-----------------|-------------------|
| 6     | SC to ST Duplex | Blue  | <b>FSPSCST3</b> | <b>FSPSCSTDS3</b> |
| 12    | SC to ST Duplex | Blue  | <b>FSPSCST6</b> | <b>FSPSCSTDS6</b> |
| 6     | ST Duplex       | Blue  | <b>FSPSTD3</b>  | <b>FSPSTDS3</b>   |
| 12    | ST Duplex       | Blue  | <b>FSPSTD6</b>  | <b>FSPSTDS6</b>   |

## SC AND SC/APC SIMPLEX

| Ports | Type           | Color | Phosphor Bronze Sleeve | Zirconia Ceramic Sleeve |
|-------|----------------|-------|------------------------|-------------------------|
| 6     | SC Simplex     | Blue  | <b>FSPSC6</b>          | <b>FSPSCSS6</b>         |
| 8     | SC Simplex     | Blue  | <b>FSPSC8</b>          | <b>FSPSCSS8</b>         |
| 12    | SC Simplex     | Blue  | <b>FSPSC12</b>         | <b>FSPSCSS12</b>        |
| 6     | SC/APC Simplex | Green | –                      | <b>FSPSCA6</b>          |
| 12    | SC/APC Simplex | Green | –                      | <b>FSPSCA12</b>         |

## MPO SIMPLEX

| Ports | Type | Color | Polarity | Catalog No.        |
|-------|------|-------|----------|--------------------|
| 6     | MPO  | Aqua  | Standard | <b>FSPMTPAQ6</b>   |
| 6     | MPO  | Green | Standard | <b>FSPMTPGN6</b>   |
| 6     | MPO  | Gray  | Reversed | <b>FSPMTPRPGY6</b> |



**PRE-POLISHED CONNECTORS**  
900/250 μm

**LC PROclick®**

| Type          | Color | 12-Pack               | 100-Pack               |
|---------------|-------|-----------------------|------------------------|
| 50μm, OM3/OM4 | Aqua  | <b>FCLC900K50GM12</b> | <b>FCLC900K50GM100</b> |
| 62.5μm, OM1   | Beige | <b>FCLC900K62M12</b>  | <b>FCLC900K62M100</b>  |
| 50μm, OM2     | Black | <b>FCLC900K50M12</b>  | <b>FCLC900K50M100</b>  |
| SM, OS2       | Blue  | <b>FCLC900KSM12</b>   | <b>FCLC900KSM100</b>   |

**SC PROclick®**

|               |       |                       |                        |
|---------------|-------|-----------------------|------------------------|
| 50μm, OM3/OM4 | Aqua  | <b>FCSC900K50GM12</b> | <b>FCSC900K50GM100</b> |
| 62.5μm, OM1   | Beige | <b>FCSC900K62M12</b>  | <b>FCSC900K62M100</b>  |
| 50μm, OM2     | Black | <b>FCSC900K50M12</b>  | <b>FCSC900K50M100</b>  |
| UPC SM, OS2   | Blue  | <b>FCSC900KSM12</b>   | <b>FCSC900KSM100</b>   |
| APC SM, OS2   | Green | <b>FCSC900KASM12</b>  | <b>FCSC900KASM100</b>  |

**ST 2CLICK®**

| Type          | Color | 12-Pack           | Cleave Tool   |
|---------------|-------|-------------------|---------------|
| 50μm, OM3/OM4 | Aqua  | <b>FCST50GM12</b> | <b>OFCLV5</b> |
| 62.5μm, OM1   | Beige | <b>FCST62M12</b>  |               |
| 50μm, OM2     | Black | <b>FCST50M12</b>  |               |
| SM, OS2       | Blue  | <b>FCSTSM12</b>   |               |

Note: Precision cleave tool **OFCLV5** recommended.



LC Pre-Polished  
FCLC900K50GM12



SC Pre-Polished  
FCSC900K62M12



2CLICK® ST  
FCSTSM12



Cleave Tool  
OFCLV5

## Four Easy Termination Steps

High quality PROclick® no-polish field termination connectors reduce installation labor.



Strip



Wipe



Cleave



Insert and Click

**HUBBELL FIBERHUBB FUSION SPLICE CONNECTORS**

**Multimode**

| Type     | LC                     | SC                      | ST-Style               |
|----------|------------------------|-------------------------|------------------------|
| 62.5 OM1 | <b>FCLCF900M626PK</b>  | <b>FSCSCF900M626PK</b>  | <b>FCSTF900M626PK</b>  |
| 50 OM2   | <b>FCLCF900M506PK</b>  | <b>FSCSCF900M506PK</b>  | <b>FCSTF900M506PK</b>  |
| 50 OM3   | <b>FCLCF900M50G6PK</b> | <b>FSCSCF900M50G6PK</b> | <b>FCSTF900M50G6PK</b> |

**Singlemode**

|         |                      |                       |                      |
|---------|----------------------|-----------------------|----------------------|
| UPC OS2 | <b>FCLCF900SM6PK</b> | <b>FSCSCF900SM6PK</b> | <b>FCSTF900SM6PK</b> |
|---------|----------------------|-----------------------|----------------------|

Note: Pack of 6 connectors, each in a protective capsule with cleave protector, extended dust cap, 900μm boot and splice sleeve. Compatible with fusion splicers having a removable fiber holder. Metal holder fixture required (sold separately). Hubbell fusion splice heat shrink oven, below, is also required for termination.



LC Fusion Splice-On  
FCLCF900M50G6PK



SC Fusion Splice-On  
FCSCF900M626PK



Fusion Splice Heat Shrink Oven  
FCSPHISOVEN

**FUSION SPLICE HEAT SHRINK OVEN**

Catalog No.

**FCSPHISOVEN**

## FIBERHUBB™ High Density Enclosures

Hubbell FIBERHUBB High Density FCR Series Fiber Enclosures have a 144-port/1U configuration. Designed specifically for data centers, the FCRHD1U Series enclosure is an innovative solution to maximize density without compromising accessibility. A 3-drawer design provides a flexible, scalable and reconfigurable interconnect facility. Each drawer accepts four compact OCLCHD Series cassette modules. Each cassette has a 12-fiber rear MPO receptacle to minimize cable congestion. A true plug-n-play design, the FCRHD1U Series has the flexibility to re-configure, partition or scale to future 40/100 GbE fiber applications.



HD Enclosure  
FCRHD1UBK

### HIGH DENSITY 144 PORT 1U ENCLOSURES

**Max LC Port Capacity: 144**

| Height     | Width     | Depth     | Color | Catalog No.      |
|------------|-----------|-----------|-------|------------------|
| 1.75" (44) | 17" (432) | 17" (432) | Black | <b>FCRHD1UBK</b> |
|            |           |           | Gray  | <b>FCRHD1UGY</b> |



OM3 Cassette  
OCLCHD50G3

### ULTRA COMPACT LC TO MPO CASSETTES

**Port Count: 12**

| Height    | Color  | OM3               | OM4                 | OS2             |
|-----------|--------|-------------------|---------------------|-----------------|
| 0.5" (13) | Aqua   | <b>OCLCHD50G3</b> | <b>OCLCHD50G4</b>   | <b>OCLCHDSM</b> |
|           | Violet | –                 | <b>OCLCHD50G4VI</b> | –               |

## FIBERHUBB™ Premium Enclosures

Hubbell's next generation FCR enclosures feature enhancements to capacity, cable management and administration. The new 17-inch depth maximizes space for interconnections, splice trays and cable storage. The L-shaped slide-out cover permits full internal access, while improving dust shielding and tamper resistance. A user friendly clip-on labeling system facilitates administration and accepts user-generated labels. All new cable management features and hardware maintain cable bend radius for standards-compliant installation.

- 17-inch depth relieves cable congestion
- Fully removable one-piece slide out cover
- Slide out inner drawer allows for maximum access
- Accepts Hubbell FSP panels and OC Series cassettes
- Available in vertical panel mounting configuration



FCR4U15SP



FCR3U12SP



FCR1U3SP

### FCR ENHANCED RACK MOUNT ENCLOSURES

| Rack Units | Depth     | FSP Panel Capacity | Splice Tray Capacity | Max LC Port Capacity | Standard         | Locking           |
|------------|-----------|--------------------|----------------------|----------------------|------------------|-------------------|
| 1          | 17" (432) | 3                  | 2                    | 72                   | <b>FCR1U3SP</b>  | <b>FCR1U3SPL</b>  |
| 2          | 17" (432) | 6                  | 6                    | 144                  | <b>FCR2U6SP</b>  | <b>FCR2U6SPL</b>  |
| 2          | 17" (432) | 9                  | 6                    | 216                  | <b>FCR2U9SP</b>  | <b>FCR2U9SPL</b>  |
| 3          | 17" (432) | 12                 | 12                   | 288                  | <b>FCR3U12SP</b> | <b>FCR3U12SPL</b> |
| 4          | 17" (432) | 15                 | 16                   | 360                  | <b>FCR4U15SP</b> | <b>FCR4U15SPL</b> |

*Note: Locking versions assembled to order.  
FCR2U9SP does not accept OC Series cassettes.*

### FCR ENHANCED RACK MOUNT ENCLOSURES, VERTICAL PANEL MOUNT

| Rack Units | Depth     | FSP Panel Capacity | Splice Tray Capacity | Max LC Port Capacity | Standard          | Locking            |
|------------|-----------|--------------------|----------------------|----------------------|-------------------|--------------------|
| 4          | 17" (432) | 12                 | 16                   | 288                  | <b>FCR4U12SPV</b> | <b>FCR4U12SPVL</b> |

## Enclosures **FIBERHUBB™**

Hubbell's economy FPR and FEUR fiber enclosures support a wide range of interconnect applications, from data centers to building backbone, horizontal and entrance facilities. Designed to accept fusion splices, field terminations, or pre-terminated assemblies.

### FPR RACK MOUNT ENCLOSURES

#### Pre-Punched

##### ST Simplex and SC Duplex

| Type      | Rack Units | Depth In (mm) | 12-Port          | 24-Port          |
|-----------|------------|---------------|------------------|------------------|
| ST-Style  | 1          | 11" (279)     | <b>FPR012STM</b> | <b>FPR024STM</b> |
| SC Duplex | 1          | 11" (279)     | <b>FPR012SM</b>  | <b>FPR024SCM</b> |
| Unloaded  | 1          | 11" (279)     | <b>FPR012SCX</b> | <b>FPR024SCX</b> |

##### FSP Panel Style, Unloaded

| Rack Units | Depth In (mm) | Panel Capacity | Max LC Port Capacity | Catalog No.   |
|------------|---------------|----------------|----------------------|---------------|
| 1          | 11" (279)     | 3              | 72                   | <b>FPR3SP</b> |

Note: Accepts all FSP Series panels



ST, 12-Port, Loaded  
FPR012STM



ST, 24-Port, Unloaded  
FPR024SCX



FSP Panel (Shown Loaded)  
FPR3SP

### FIBER INTERCONNECTION SHELVES

#### Loaded, 1 Rack Unit

##### LC Duplex

| Mode        | Adapter Color | 12-Port             | 24-Port             | 48-Port             |
|-------------|---------------|---------------------|---------------------|---------------------|
| Multimode   | Beige         | <b>FEUR12LCDM</b>   | <b>FEUR24LCDM</b>   | <b>FEUR48LCDM</b>   |
| Multimode   | Aqua          | <b>FEUR12LCDOM3</b> | <b>FEUR24LCDOM3</b> | <b>FEUR48LCDOM3</b> |
| Single Mode | Blue          | <b>FEUR12LCDSM</b>  | <b>FEUR24LCDSM</b>  | <b>FEUR48LCDSM</b>  |

##### ST-Style

|           |        |                  |                  |   |
|-----------|--------|------------------|------------------|---|
| Multimode | Nickel | <b>FEUR12STM</b> | <b>FEUR24STM</b> | - |
|-----------|--------|------------------|------------------|---|

##### SC Duplex

|             |       |                    |                    |                    |
|-------------|-------|--------------------|--------------------|--------------------|
| Multimode   | Beige | <b>FEUR12SCM</b>   | <b>FEUR24SCM</b>   | <b>FEUR48SCM</b>   |
| Multimode   | Aqua  | <b>FEUR12SCOM3</b> | <b>FEUR24SCOM3</b> | <b>FEUR48SCOM3</b> |
| Single Mode | Blue  | <b>FEUR12SCSM</b>  | <b>FEUR24SCSM</b>  | <b>FEUR48SCSM</b>  |



LC Duplex MM, Loaded  
FEUR24LCDOM3



ST MM, Loaded  
FEUR24STM



SC Duplex MM, Loaded  
FEUR24SCM

### FSP ADAPTER PANEL, UNLOADED

72 maximum LC port capacity

**FEURFSPD**

Note: Accepts all FSP Series panels



FSP Adapter Panel, Unloaded  
FEURFSPD

### ACCESSORIES

| Description                                    | Catalog No.        |
|--|--------------------|
| Fiber management spool kit, 2-pack             | <b>OFSPPOOLPK2</b> |
| Cable management kit, bend radius clip, 4-pack | <b>FBRMGTCPLK4</b> |
| Splice tray, 12-fiber, aluminum                | <b>STRAY12F</b>    |
| Splice tray, 24-fiber, aluminum                | <b>STRAY24F</b>    |
| Splice tray, 24-fiber, molded plastic          | <b>OFSPLKT24F</b>  |



Bend Radius Clip  
FBRMGTCPLK4



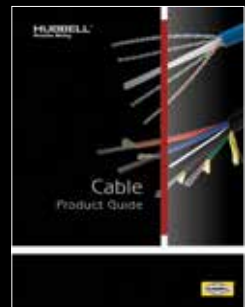
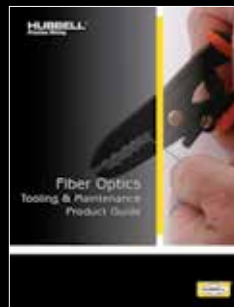
[hubbell.com/hubbellpremisewiring](http://hubbell.com/hubbellpremisewiring)



[your complete online resource]

Find what you need quickly with our multi-functional online value-added tools—print, zoom, search and download required information anytime, anywhere.

[related literature]



**HUBBELL®**  
Premise Wiring

[hubbell.com/hubbellpremisewiring](http://hubbell.com/hubbellpremisewiring)

