

## Specifications

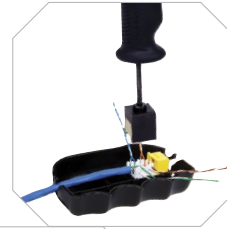
- Mating cycles: 2500
- Manufacturing: 100% factory tested

## Standards

- TIA-568.2-D Category 6 component
- IEC 60603-7-4 Category 6 component
- Qualified to 150% of IEEE 802.3bt current level
- IEEE 802.3 5GBASE-T
- UL Plenum rated

## Performance

Front to back contact structure provides enhanced NEXT performance and optimum balance.



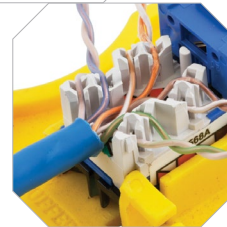
## Labor Savings

Exclusive 1-Punch Tool terminates within seconds.



## Universal Wiring

Two distinct labels eliminate wiring confusion, T568B or T568A.



## IDC Lacing

IDC towers have a blade feature to assist pair splitting during termination.

## NEXTSPEED® Ascent Category 6 Jacks



## NEXTSPEED® Category 5e Jacks



## USOC Jacks, RJ-24



Color	Single Pack	24-Pack	Single Pack	24-Pack	Single Pack
Black	HXJ6BK	HXJ6BK24	HXJ5EBK	HXJ5EBK24	HXJUBK
Blue	HXJ6B	HXJ6B24	HXJ5EB	HXJ5EB24	HXJUB
Gold	–	HXJ6GL24	–	HXJ5EGL24	–
Gray	HXJ6GY	HXJ6GY24	HXJ5EGY	HXJ5EGY24	HXJUGY
Green	HXJ6GN	HXJ6GN24	HXJ5EGN	HXJ5EGN24	HXJUGN
Ivory	HXJ6EI	HXJ6EI24	HXJ5EEI	HXJ5EEI24	HXJUEI
Office White	HXJ6OW	HXJ6OW24	HXJ5EOW	HXJ5EOW24	HXJUOW
Orange	HXJ6OR	HXJ6OR24	HXJ5EOR	HXJ5EOR24	HXJUOR
Purple	–	HXJ6P24	–	HXJ5EP24	–
Red	HXJ6R	HXJ6R24	HXJ5ER	HXJ5ER24	HXJUR
White	HXJ6W	HXJ6W24	HXJ5EW	HXJ5EW24	HXJUW
Yellow	HXJ6Y	HXJ6Y24	HXJ5EY	HXJ5EY24	HXJUY

Note: See color chart on page B02.