

FEATURES

- Available 2', 3', 4', or 8'
- Heavy die formed steel channel
- Snap-on cover. No tools required. No hardware to lose
- Rotary lock lampholders for positive lamp contact
- Channel ends double as joiners
- Individual or row mounting. Surface or suspended

PROJECT INFORMATION

Project Name _____

Type _____

Catalog No. _____

Date _____

CONSTRUCTION

Heavy gauge cold rolled steel housings fully assembled. Channel cover provides room-side access to ballast.

FINISH

White painted parts are treated with a five stage phosphate bonding process and finished with a high reflectance baked enamel.

BALLASTS

Energy efficient, thermally protected, automatic resetting, Class P, high power factor, sound rated A, unless otherwise specified. CEE NEMA Premium compliant.

ELECTRICAL

Standard class "P", thermally protected, auto-resetting HPF ballast, sound rated A. CEE NEMA Premium compliant. All ballast leads extend a minimum of 6" through access location. NEC/CEC-compliant ballast disconnect is standard.

CERTIFICATION

All luminaires are built to UL 1598 standards and bear appropriate UL and cUL or CSA labels. Damp location labeling is standard. Emergency-equipped fixtures labeled UL 924.

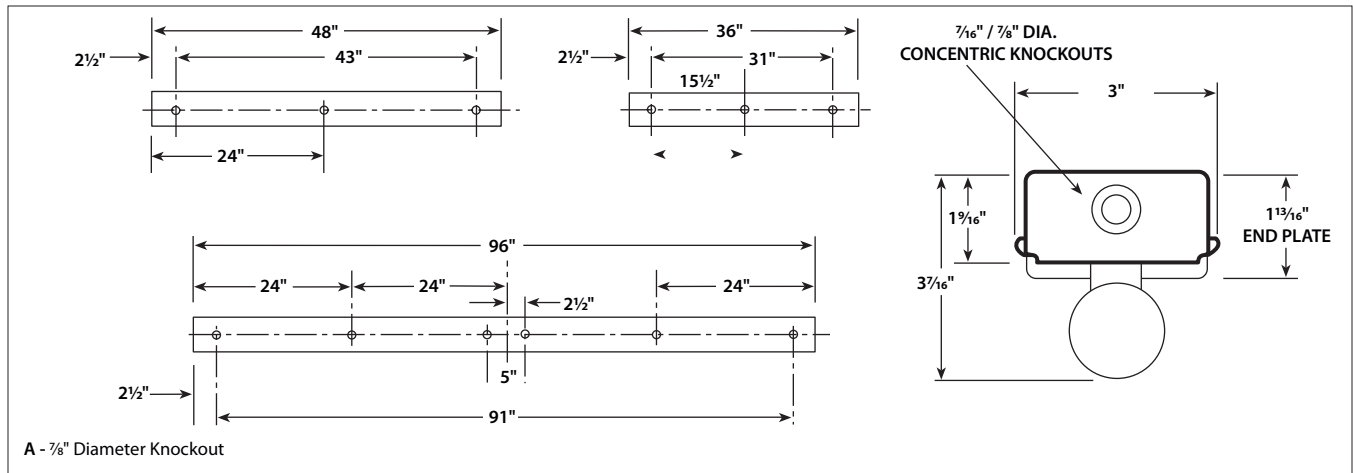
ORDERING INFORMATION

EXAMPLE CH4-132-E347-GLR

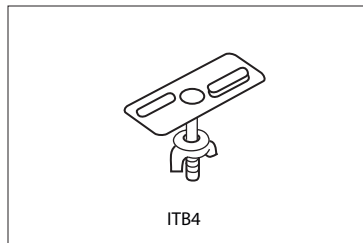
CH					E		
MODEL	SIZE	NO. OF LAMPS IN CROSS SECTION	LAMP TYPE	BALLAST	VOLTAGE	OPTIONS	
CH Heavy Duty Narrow Channel	2 2' 3 3' 4 4' 8 8'	1 One 2 Two	17 2', T8: 17 Watt 25 3', T8: 25 Watt 32 4', T8: 32 Watt 21 3', T5: 21 Watt 28 4', T5: 28 Watt 54 4', T5HO: 54 or 51 Watt	E Electronic T8, Instant Start <small>For a specific ballast vendor, show as option.</small>	U 120V-277V 347 347V	GLR Fast Blow Fuse GMF Slow Blow Fuse EL Emergency Battery Pack PAF Paint After Fabrication	
ACCESSORIES (ORDER SEPARATELY)							
ITB4 Hanger for close mounting on a T-Bar ceiling							
CHWG3 3' Wire Guard							
CHWG4 4' Wire Guard, 2 required for 8' fixture							
CHRA3 3' Asymmetric Reflector ¹							
CHRA4 4' Asymmetric Reflector, 2 required for 8' fixture ¹							
CHR3 3' Symmetric Reflector ¹							
CHR4 4' Symmetric Reflector, 2 required for 8' fixture ¹							

¹Reflectors fit 1-lamp profiles only.

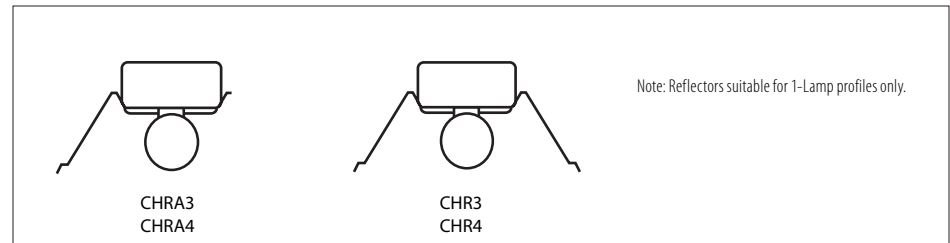
DIMENSIONAL DATA



MOUNTING DATA



ACCESSORY REFLECTORS FOR ONE LAMP PROFILE



NOTE: All dimensions are in inches; dimensions and specifications are subject to change without notice. Please consult factory or check sample for verification.