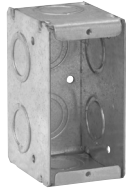


Steel masonry boxes

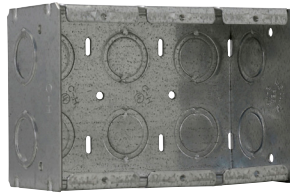
MASONRY BOXES

2 1/2" DEEP x 3 3/4" HIGH
1/2" & 3/4" CONCENTRIC KOs

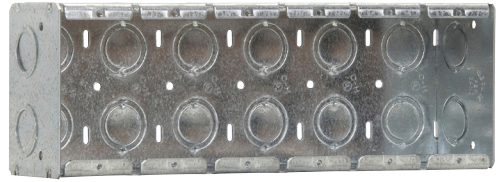
UL LISTED



TP682



TP684



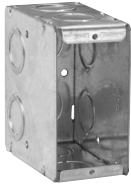
TP687

Cat. #	Gang	Width	Knockouts			Capacity cu. in.	Unit qty.	Wt. lbs. per 100
			Each end	Each side	Bottom			
TP682	1	1 15/16"	1	2	2	15.5	20	70
TP683	2	3 3/4"	2	2	4	31.0	10	103
TP684	3	5 3/16"	3	2	6	46.5	5	129
TP685	4	7 3/8"	4	2	8	62.0	5	165
TP686	5	9 3/16"	5	2	10	77.5	5	189
TP687	6	11"	6	2	12	93.0	1	230

MASONRY BOXES

3 1/2" DEEP x 3 3/4" HIGH
1/2" & 3/4" CONCENTRIC KOs

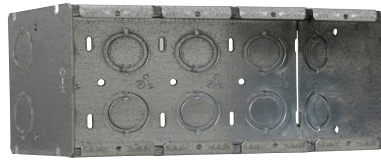
UL LISTED



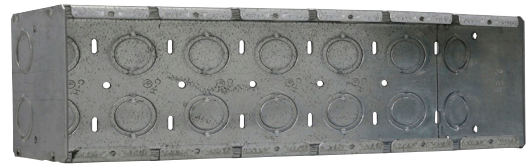
TP690



TP691



TP693



TP695

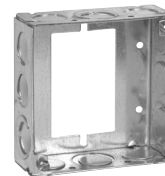
Cat. #	Gang	Width	Knockouts			Capacity cu. in.	Unit qty.	Wt. lbs. per 100
			Each end	Each side	Bottom			
TP690	1	1 15/16"	2	2	2	22.0	20	84
TP691	2	3 3/4"	4	2	4	44.0	10	120
TP692	3	5 3/16"	6	2	6	66.5	10	155
TP693	4	7 3/8"	8	2	8	88.0	5	207
TP694	5	9 3/16"	10	2	10	110.0	5	235
TP695	6	11"	12	2	12	132.0	1	287

Steel boxes

MASONRY BOX PARTITIONS & EXTENSION RING



TP820



TP422¹

Cat. #	Description	Unit qty.	Wt. lbs. per 100
Masonry box partitions			
TP820	Non-metallic partition for 2 1/2" deep masonry boxes	25	3
TP821	Non-metallic partition for 3 1/2" deep masonry boxes	25	4
Cat. #	Knockouts	Unit qty.	Wt. lbs. per 100
	Sides	Bottom	
1 1/2" deep switch & masonry box extension ring			
TP422 ¹	8 - 1/2", 4 - 1/2" + 3/4" E	50	50

¹ For use as extension with switch box, not four square box.