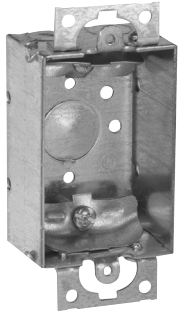


Steel switch boxes

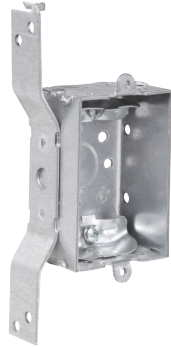
1½" DEEP – NON-GANGABLE – 7.5 CUBIC INCH CAPACITY

2" WIDE x 3" LONG

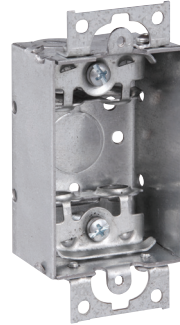
UL LISTED



TP100



TP104



TP106



TP114

Cat. #	Bracket	Ears (# of screws)	Knockouts			Unit qty.	Wt. lbs. per 100
			Each end	Each side	Bottom		
For non-metallic cable – clamps in each end							
TP100	-	Yes (2)	2 - cable	-	1 - ½"	50	43
TP104	"S", Set ½"	-	2 - cable	-	1 - ½"	50	50
For armored & metal-clad (MCI) cable – clamps in each end							
TP106 ^A	-	Yes (2)	2 - cable	-	1 - ½"	50	44
For conduit – no clamps, flush device							
TP114	-	Yes (2)	1 - ½"	-	1 - ½"	50	39

^AUL approved for use with aluminum interlocking grounding metal-clad cable, Type MCIA (Southwire MCAP™). MCAP™ is a registered trademark of Southwire Company.

Steel switch boxes

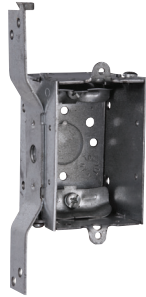
2" DEEP – GANGABLE – 10.0 CUBIC INCH CAPACITY

2" WIDE x 3" LONG

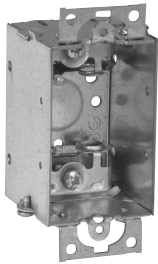
UL LISTED



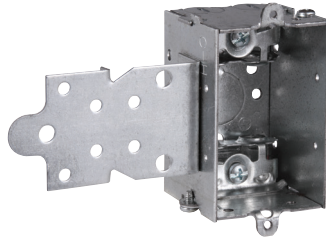
TP116



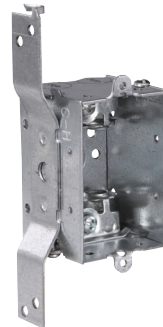
TP118



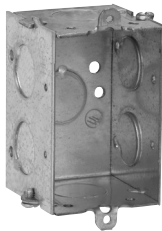
TP120



TP123



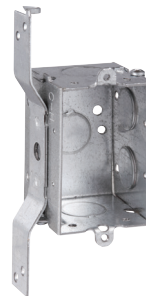
TP124



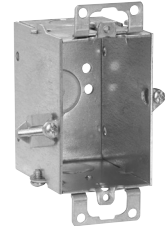
TP126



TP130



TP132



TP131 Hold-tite

Steel boxes

Cat. #	Bracket	Ears (# of screws)	Knockouts			Unit qty.	Wt. lbs. per 100
			Each end	Each side	Bottom		
For non-metallic cable – clamps in each end							
TP116	-	Yes (2)	2 - cable	-	1 - 1/2"	50	53
TP118	"S", set 5/8"	-	2 - cable	-	1 - 1/2"	50	60
For armored & metal-clad (MCI) cable – clamps in each end							
TP120 ^A	-	Yes (2)	2 - cable	-	1 - 1/2"	50	54
TP123 ^A	"F", set 1/2"	-	2 - cable	-	1 - 1/2"	50	63
TP124 ^A	"S", set 5/8"	-	2 - cable	-	1 - 1/2"	50	61
For conduit – no clamps, flush device							
TP126	-	-	1 - 1/2"	2 - 1/2"	1 - 1/2"	50	47
TP130	-	Yes (2)	1 - 1/2"	2 - 1/2"	1 - 1/2"	50	48
TP132	"S", set 5/8"	-	1 - 1/2"	2 - 1/2", 1 Side	1 - 1/2"	50	58
TP131	Hold-tite	Yes (2)	1 - 1/2" - T	-	1 - 1/2"	50	52

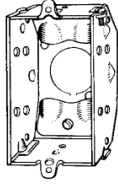
^AUL approved for use with aluminum interlocking grounding metal-clad cable, Type MClA (Southwire MCAP[®]). MCAP[®] is a registered trademark of Southwire Company.

Steel switch boxes

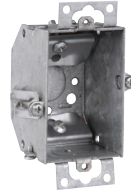
2 1/4" DEEP – GANGABLE – BEVELED CORNERS – 10.5 CUBIC INCH CAPACITY

2" WIDE x 3" LONG

UL LISTED



TP134



TP137 Hold-tite



TP138

Cat. #	Description	Ears (# of screws)	Bumps	Knockouts			Unit qty.	Wt. lbs. per 100
				Each end	Each side	Bottom		
Clamp screws through beveled corners								
TP134	Gangable	-	Yes	2 - cable	-	1 - 1/2"	50	51
TP137	Gangable	Yes (1)	-	2 - cable	-	1 - 1/2"	50	57
TP138	Gangable	Yes (1)	-	2 - cable	-	1 - 1/2"	50	55

2 1/2" DEEP – GANGABLE – 12.5 CUBIC INCH CAPACITY

2" WIDE x 3" LONG

UL LISTED



TP158



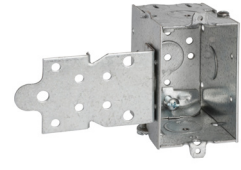
TP162



TP163



TP164



TP168



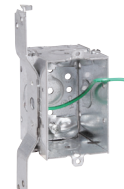
TP170



TP161



TP172



TP174



TP171

Cat. #	Bracket	Ears (# of screws)	Ground pigtail	Leveling bumps	Knockouts			Unit qty.	Wt. lbs. per 100
					Each end	Each side	Bottom		
For non-metallic cable – clamps in each end									
TP158	-	-	-	Yes	2 - cable, 1 - 1/2"	-	1 - 1/2"	50	59
TP115 [Ⓞ]	-	Yes (1)	Yes	-	2 - cable	1 - 1/2"	1 - 1/2"	50	63
TP161	Snap-in	Yes (1)	-	-	2 - cable	1 - 1/2"	-	50	73
TP162	-	Yes (1)	-	-	2 - cable	1 - 1/2"	1 - 1/2"	50	62
TP163	Hold-tite	Yes (1)	-	-	2 - cable	-	1 - 1/2"	50	65
TP164	"F", set 1/2"	-	-	-	2 - cable, 1 - 1/2"	1 - 1/2"	1 - 1/2"	50	71
TP168	"F", set 1/4"	-	-	-	2 - cable, 1 - 1/2"	1 - 1/2"	1 - 1/2"	50	71
TP170	"S", set 5/8"	-	-	-	2 - cable, 1 - 1/2"	1 - 1/2"	1 - 1/2"	50	69
TP172	"D", set 5/8"	-	-	-	2 - cable, 1 - 1/2"	1 - 1/2"	1 - 1/2"	50	70
TP174	"D", set 5/8"	-	Yes	-	2 - cable, 1 - 1/2"	1 - 1/2"	1 - 1/2"	50	71
TP171	"VP", set 1/2"	-	-	-	2 - cable, 1 - 1/2"	1 - 1/2"	1 - 1/2"	50	73

[Ⓞ]Not UL Listed.

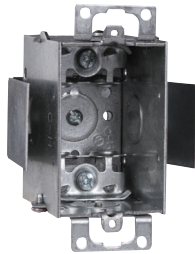
Steel boxes

Steel switch boxes

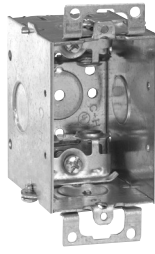
2 1/2" DEEP – GANGABLE – 12.5 CUBIC INCH CAPACITY

2" WIDE x 3" LONG FOR ARMORED & METAL-CLAD (MCI) CABLE – CLAMPS IN EACH END

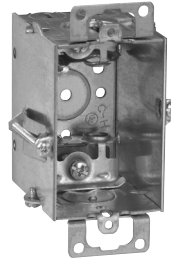
UL LISTED



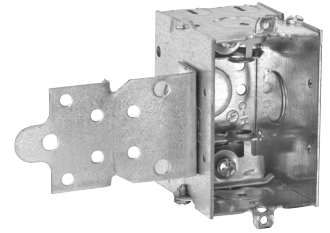
TP177



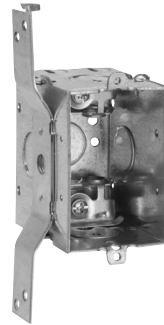
TP178



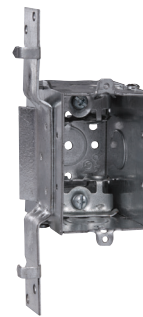
TP179 Hold-Tite



TP180



TP184



TP185

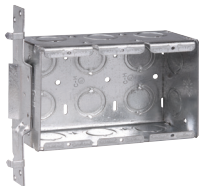
Cat. #	Bracket	Ears (# of screws)	Knockouts			Unit qty.	Wt. lbs. per 100
			Each end	Each side	Bottom		
TP177 ^A	Snap-in	Yes (1)	2 - cable	1 - 1/2"	-	50	74
TP178 ^A	-	Yes (1)	2 - cable	1 - 1/2"	1 - 1/2"	50	63
TP179 ^A	Hold-tite	Yes (1)	2 - cable	-	1 - 1/2"	50	66
TP180 ^A	"F", set 1/2"	-	2 - cable, 1 - 1/2"	1 - 1/2"	1 - 1/2"	50	72
TP184 ^A	"S", set 5/8"	-	2 - cable, 1 - 1/2"	1 - 1/2"	1 - 1/2"	50	70
TP185 ^A	"VP", set 1/2"	-	2 - cable, 1 - 1/2"	1 - 1/2"	1 - 1/2"	50	74

^AUL approved for use with aluminum interlocking grounding metal-clad cable, Type MCI (Southwire MCAP™). MCAP™ is a registered trademark of Southwire Company.

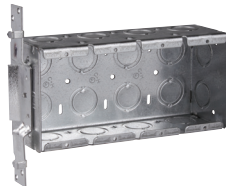
GANG BOXES SET BACK 1/2"

2 1/2" DEEP – 3 3/4" HIGH – 1/2" & 3/4" CONCENTRIC KOs

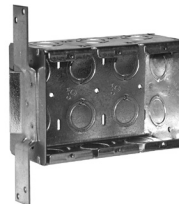
UL LISTED



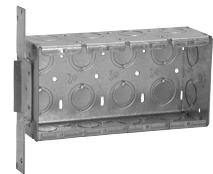
TP632



TP633



TP637



TP638

Cat. #	Gang	Bracket	Width	Knockouts			Capacity cu. in.	Unit qty.	Wt. lbs. per 100
				Each end	Each side	Bottom			
TP632	3	VP	5 5/16"	2	3	6	46.5	5	143
TP633	4	VP	7 3/8"	2	4	8	62.0	5	179
TP637	3	VS	5 5/16"	2	3	6	46.5	5	143
TP638	4	VS	7 3/8"	2	4	8	62.0	5	179

Steel switch boxes

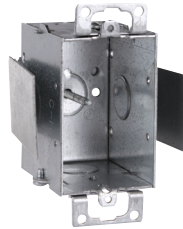
2 1/2" DEEP – GANGABLE – 12.5 CUBIC INCH CAPACITY

**2" WIDE x 3" LONG
FOR CONDUIT – NO CLAMPS**

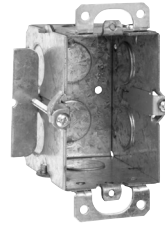
UL LISTED



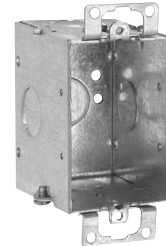
TP214



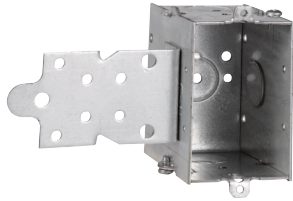
TP216



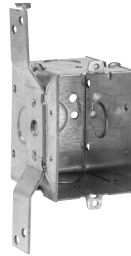
TP217



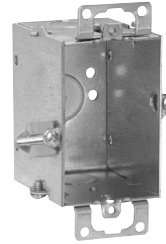
TP218



TP220



TP222



TP224

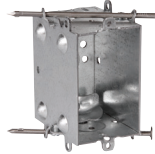
Cat. #	Bracket	Ears (# of screws)	Leveling Bumps	Knockouts			Unit qty.	Wt. lbs. per 100
				Each end	Each side	Bottom		
TP214	-	-	Yes	1 - 1/2"	-	1 - 1/2"	50	55
TP216	Snap-in	Yes (1)	-	1 - 1/2"	1 - 1/2"	-	50	69
TP217	-	Yes (1)	-	1 - 1/2"	-	1 - 1/2"	50	64
TP218	-	Yes (1)	-	1 - 1/2"	1 - 1/2"	1 - 1/2"	50	58
TP220	"F", set 1/2"	-	-	1 - 1/2"	1 - 1/2", 1 side	1 - 1/2"	50	66
TP222	"S", set 5/8"	-	-	1 - 1/2"	1 - 1/2", 1 side	1 - 1/2"	50	65
TP224	Hold-tite	Yes (1)	-	1 - 1/2"	-	1 - 1/2"	50	61

Steel switch boxes

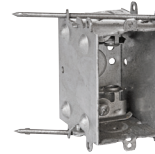
2 1/2" DEEP SWITCH BOXES – "INSTANT ON" – 12.5 CUBIC INCH CAPACITY

2" WIDE x 3" LONG

WITH BUMPS – CLAMPS IN EACH END (BUMPS LEVEL THE BOX AGAINST THE SIDE OF STUD, TOP TO BOTTOM, FRONT TO BACK)



TP210



TP213

Cat. #	Clamps	Nails	Knockouts			Unit qty.	Wt. lbs. per 100
			Each end	Each side	Bottom		
TP210	NM cable	Angle	2 - cable, 1 - 1/2"	-	1 - 1/2"	50	66
TP213	Armored cable	Angle	2 - cable, 1 - 1/2"	-	1 - 1/2"	50	66

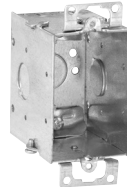
2 3/4" DEEP – GANGABLE – 14.0 CUBIC INCH CAPACITY

2" WIDE x 3" LONG

UL LISTED



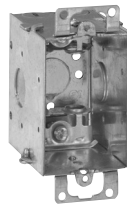
TP660



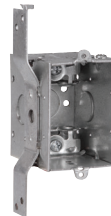
TP662



TP664



TP668



TP670

Cat. #	Bracket	Ears (# of screws)	Knockouts			Unit qty.	Wt. lbs. per 100
			Each end	Each side	Bottom		
For non-metallic cable – clamps in each end							
TP660	-	-	2 - cable	1 - 1/2"	1 - 1/2"	50	62
TP662	-	Yes (1)	2 - cable	1 - 1/2"	1 - 1/2"	50	67
TP664	"S", set 5/8"	-	2 - cable	1 - 1/2"	1 - 1/2"	50	70
For armored & metal-clad (MCI) cable – clamps in each end							
TP668 ^A	-	Yes (1)	2 - cable	1 - 1/2"	1 - 1/2"	50	68
TP670 ^A	"S", set 5/8"	-	2 - cable	1 - 1/2"	1 - 1/2"	50	71

^AUL approved for use with aluminum interlocking grounding metal-clad cable, Type MCIA (Southwire MCAP™). MCAP™ is a registered trademark of Southwire Company.

Steel switch boxes

2³/₄" DEEP – GANGABLE – 14.0 CUBIC INCH CAPACITY

2" WIDE x 3" LONG
FOR CONDUIT – NO CLAMPS

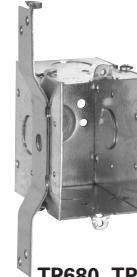
UL LISTED



TP672, TP674



(TP676 – 1 screw ear),
(TP678 – 2 screw ears)



TP680, TP677

Cat. #	Bracket	Ears (# of screws)	Knockouts			Unit qty.	Wt. lbs. per 100
			Each end	Each side	Bottom		
TP672	-	-	1 - 1/2"	1 - 1/2"	1 - 1/2"	50	59
TP674	-	-	1 - 3/4"	1 - 3/4"	1 - 1/2"	50	59
TP676	-	Yes (2)	1 - 1/2"	1 - 1/2"	1 - 1/2"	50	61
TP678	-	Yes (2)	1 - 3/4"	1 - 3/4"	1 - 1/2"	50	61
TP680	"S", set 5/8"	-	1 - 1/2"	1 - 1/2", 1 Side	1 - 1/2"	50	70
TP677	"S", set 5/8"	-	1 - 3/4"	1 - 3/4", 1 Side	1 - 1/2"	50	70

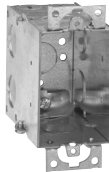
3¹/₂" DEEP – GANGABLE – 18.0 CUBIC INCH CAPACITY

2" WIDE x 3" LONG
FOR NON-METALLIC CABLE – CLAMPS IN EACH END

UL LISTED



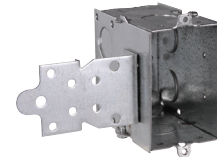
TP236



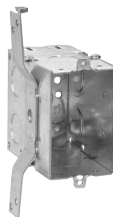
TP238



TP239



TP240



TP242



TP243

Cat. #	Bracket	Ground pigtail	Ears (# of screws)	Knockouts			Unit qty.	Wt. lbs. per 100
				Each end	Each side	Bottom		
TP236	-	-	-	2 - cable, 1 - 1/2"	2 - 1/2"	1 - 1/2"	25	78
TP238	-	-	Yes (2)	2 - cable, 1 - 1/2"	2 - 1/2"	1 - 1/2"	25	80
TP239	-	Yes	Yes (2)	2 - cable, 1 - 1/2"	2 - 1/2"	1 - 1/2"	25	81
TP240	"F", set 1/2"	-	-	2 - cable, 1 - 1/2"	2 - 1/2"	1 - 1/2"	25	88
TP242	"S", set 7/8"	-	-	2 - cable, 1 - 1/2"	2 - 1/2"	1 - 1/2"	25	87
TP243	"S", set 7/8"	Yes	-	2 - cable, 1 - 1/2"	2 - 1/2"	1 - 1/2"	25	88

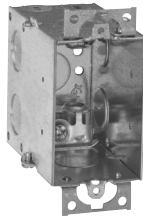
Steel switch boxes

3 1/2" DEEP – GANGABLE – 18.0 CUBIC INCH CAPACITY

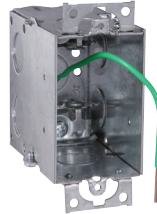
2" WIDE x 3" LONG

FOR ARMORED & METAL-CLAD (MCI) CABLE – CLAMPS IN EACH END

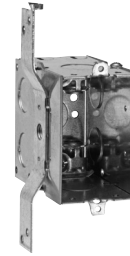
UL LISTED



TP244



TP249



TP246

Cat. #	Bracket	Ground pigtail	Ears (# of screws)	Knockouts			Unit qty.	Wt. lbs. per 100
				Each end	Each side	Bottom		
TP244 ^A	-	-	Yes (2)	2 - cable, 1 - 1/2"	2 - 1/2"	1 - 1/2"	25	81
TP249 ^A	-	Yes	Yes (2)	2 - cable, 1 - 1/2"	2 - 1/2"	1 - 1/2"	25	82
TP246 ^A	"S", set 1/8"	-	-	2 - cable, 1 - 1/2"	2 - 1/2"	1 - 1/2"	25	88

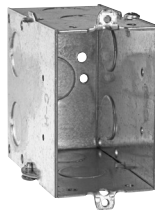
^AUL approved for use with aluminum interlocking grounding metal-clad cable, Type MCI (Southwire MCAP®). MCAP® is a registered trademark of Southwire Company.

3 1/2" DEEP – GANGABLE – 18.0 CUBIC INCH CAPACITY

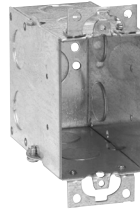
2" WIDE x 3" LONG

FOR CONDUIT – NO CLAMPS

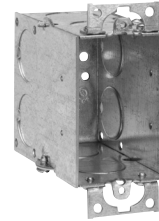
UL LISTED



TP248, TP250



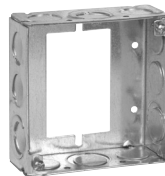
TP252



TP254

Cat. #	Bracket	Ears (# of screws)	Knockouts			Unit qty.	Wt. lbs. per 100
			Each end	Each side	Bottom		
TP248	-	-	2 - 1/2"	2 - 1/2"	1 - 1/2"	25	74
TP250	-	-	2 - 3/4"	2 - 3/4"	1 - 1/2"	25	74
TP252	-	Yes (2)	2 - 1/2"	2 - 1/2"	1 - 1/2"	25	76
TP254	-	Yes (2)	2 - 3/4"	2 - 3/4"	1 - 1/2"	25	76

1 1/2" DEEP SWITCH & MASONRY BOX EXTENSION RING



TP422^H

Cat. #	Knockouts		Unit qty.	Wt. lbs. per 100
	Sides	Bottom		
1 1/2" deep switch & masonry box extension ring				
TP422 ^{J H}	8 - 1/2", 4 - 1/2" + 3/4" E	-	50	50

^JFor use as extension with switch box, not four square box.

^HCSA certified.