



[Catalog Home](#)

**Product Datasheet**


**ANDERSON FARGO**

**CFS182N -- Suspension Clamp**



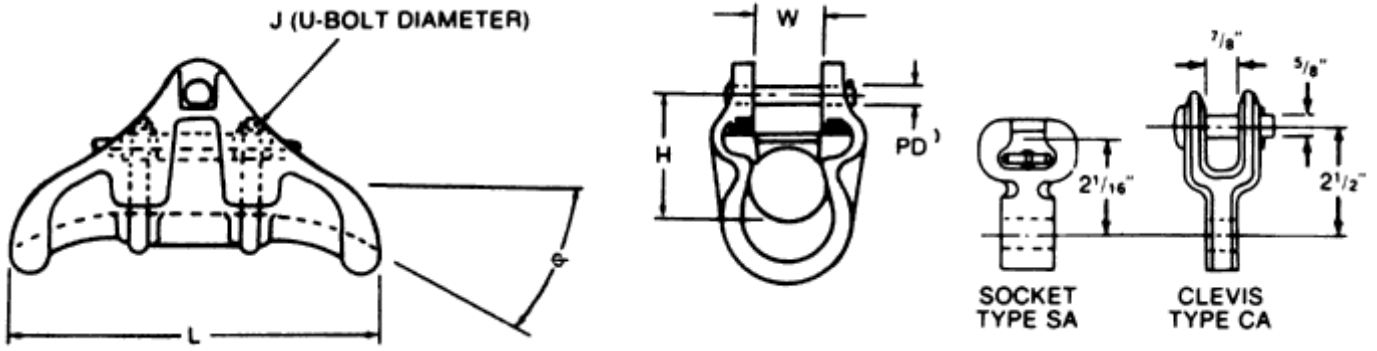
Suspension Clamp, Aluminum, EHV or Std Voltage, for use with conductors 1.55 - 1.82 with fitting: None

**Product Specifications**

<p><b>Series</b></p>	 <p><b>CFS &amp; CFSHT series</b> EHV or Standard Voltage, Aluminum &amp; High-Temp Aluminum</p>
<p><b>PDF Catalog Page</b></p>	<p><a href="#">Click HERE to view the web page.</a></p>
<p><b>Fitting</b></p>	<p>None</p>
<p><b>Clamp Material</b></p>	<p>Aluminum</p>
<p><b>Fitting Catalog No.</b></p>	<p>-</p>
<p><b>Ultimate Body Strength</b></p>	<p>25,000 lbs (11,340 kgs)</p>
<p><b>Maximum Take-off Angle 0</b></p>	<p>17.5</p>
<p><b>Dimension H</b></p>	<p>3.25 in (82.6 mm)</p>
<p><b>Dimension J</b></p>	<p>0.500 in (12.7 mm)</p>
<p><b>Dimension L</b></p>	<p>10.0 in (254 mm)</p>
<p><b>Dimension W</b></p>	<p>2.06 in (52.4 mm)</p>
<p><b>Dimension PD</b></p>	<p>0.625 in (15.9 mm)</p>
<p><b>Hardware Material</b></p>	<p>Galvanized Steel</p>
<p><b>Minimum - Maximum Conductor Size</b></p>	<p>AAC 1900 kcmil (127) Thru AAC 1033.5 kcmil (61) w/Armor Rods AAAC 740.8 kcmil str (37) w/Armor Rods Thru AAAC 932.6 kcmil str (37) w/Armor Rods ACSR 1780.0 kcmil (84/19) Thru ACSR 954.0 kcmil (54/7) w/Armor Rods ACAR 1933.0 kcmil (42/19) Thru ACA</p>
<p><b>Clamping Range</b></p>	<p>1.55 - 1.82 in (39.37 - 46.23 mm)</p>
<p><b>Voltage Application</b></p>	<p>EHV</p>
<p><b>Material Type</b></p>	<p>Non-Standard</p>
<p><b>UPC Code</b></p>	<p>09635929885</p>
<p><b>Standard Package</b></p>	<p>9</p>
<p><b>Standard Package Unit</b></p>	<p>Each</p>
<p><b>Min Order Qty</b></p>	<p>1</p>
<p><b>Weight / Ea.</b></p>	<p>4.9 Lbs</p>

**Compressed Product Number**

CFS182N



[Catalog Home](#)



[Warranty Info](#) | [Trademarks](#) | [Terms of Use](#)

*All contents Copyright © 2007 Hubbell Power Systems, Inc. All rights reserved.*

NOTE: Because Hubbell has a policy of continuous product improvement, we reserve the right to change design and specifications without notice.