

## 4 Speed Quiet Ceiling Fan/Light Control – Single Pole (One location)

Cat. No. RTD01-10,

**Fan Control**

Rated: 1.5A-120VAC, 60Hz

**Full Range Dimming Incandescent Lamp Load**

Rated: 300W-120VAC, 60Hz

### INSTALLATION INSTRUCTIONS

#### WARNINGS AND CAUTIONS:

- To be installed and/or used in accordance with appropriate electrical codes and regulations.
- If you are unsure about any part of these instructions, consult a qualified electrician.
- To avoid overheating and possible damage to this device and other equipment, do not install to control a receptacle, fluorescent lighting, a motor- or a transformer-operated appliance other than appropriate ceiling fans and incandescent lamps.

#### WARNINGS AND CAUTIONS:

- To reduce the risk of fire or electrical shock, this control is to be used with ceiling fans that are marked as suitable for use with solid-state fan speed control and is rated 120VAC, total load 1.5 amperes maximum.
- For use on ceiling paddle fans with split-capacitor or shaded pole motors only. Please refer to manufacturer's instructions or rating label on the motor to confirm type. Use with any other types of motors or equipment may cause overheating and/or damage to the motors or equipment.
- Disconnect power at circuit breaker or fuse when servicing fixture.
- Use this device only with copper or copper clad wire. With aluminum wire use only devices marked CO/ALR or CU/AL.

#### Tools needed to install your Fan Speed Control:

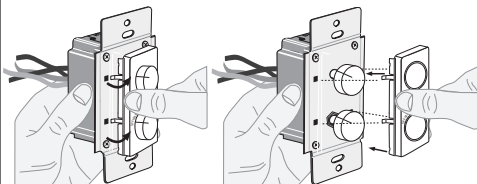
Slotted/Phillips Screwdriver      Electrical Tape  
Pliers                                      Pencil  
Cutters                                      Ruler

#### Color Change Option:

If a color change kit is provided with your device, proceed with the following step if you need to change the color. Otherwise, proceed with the "Installing Fan Speed/Light Control by itself or with other devices" section.

#### Changing the color of your Fan Speed/Light Control

Your Fan Speed Control includes two color options. The Control ships with the White frame attached. To change color of frame, proceed as follows:



Push in side at tab to release. Remove frame and knob.

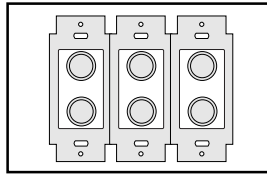
Press on knob. Line up tabs on back of frame and press in side to attach

#### Installing Fan Speed/Light Control by itself or with other devices:

If installing Control in a single device application, proceed with the **MULTI-FAN CONTROL** section. If installing Control in a multi-device application, proceed as follows:

#### MULTI-DEVICE APPLICATION

**NOTE:** There is NO derating necessary for multi-gang installations of this Fan Speed Control.



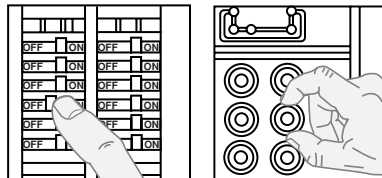
#### MULTI-FAN CONTROL

Any number of fans of the same type may be controlled by a single fan speed control provided that the total amperage of the fans do not exceed the amperage of the fan speed control.

#### INSTALLING YOUR FAN SPEED/LIGHT CONTROL

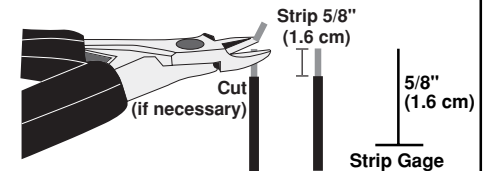
**NOTE:** Use check boxes  when Steps are completed.

**Step 1 WARNING:** To avoid fire, shock, or death; **TURN OFF POWER** at circuit breaker or fuse and test that power is off before wiring!

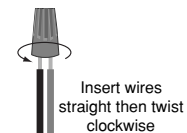
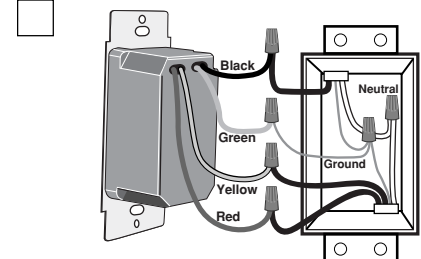


#### Step 2 Preparing wires:

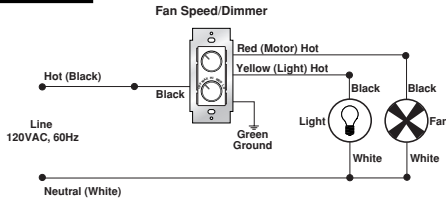
- Pull off pre-cut insulation from Control leads.
- Make sure that the ends of the wires from the wall box are **straight (cut if necessary)**.
- Remove 5/8" (1.6 cm) of insulation from each wire in the wall box (shown).



#### Step 3 Single-Pole Wiring Application:



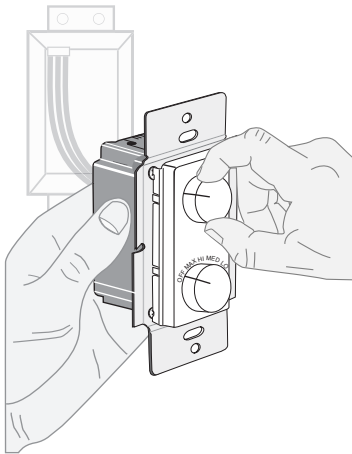
### Step 3a Single-Pole Wiring Application: con't



**Connect wires per WIRING DIAGRAM as follows:** Screw wire nuts on clockwise making sure no bare conductors show below the wire connectors. Secure each connector with electrical tape.

- Green control Ground lead to Green or bare copper wire in wall box.
- Black control lead to Line (Hot) wall box wire removed from old switch.
- Red control lead (motor Hot) to Black Fan wall box wire.
- Yellow control lead (Light Hot) to Black Light wall box wire.
- **Proceed to Step 6.**

### Step 4 Testing your Fan Speed/Light Control prior to mounting in wall box:



### Step 4a con't

- Restore power at circuit breaker or fuse.
- Carefully holding control as shown, proceed as follows:

**Dimmer:** Rotate top knob control clockwise and counter-clockwise. Lights should turn DIM and BRIGHTEN accordingly.

**If light does not turn ON, refer to the TROUBLESHOOTING section.**

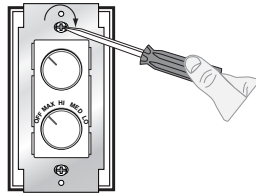
**Fan Speed:** Rotate bottom knob to the MAX position. Fan should turn ON to highest level. Rotate knob to the remaining levels: HI, MED, and LO. Fan speed should change accordingly.

**If fan does not turn ON, refer to the TROUBLESHOOTING section.**

### Step 5 Fan Speed/Light Control Mounting:



**TURN OFF POWER AT CIRCUIT**



Installation may now be completed by carefully positioning all wires to provide room in wall box for control. Mount control into box with mounting screws supplied. Attach wallplate.

### Step 6 BREAKER OR FUSE.



**Restore Power:** Restore power at circuit breaker or fuse. **Installation is complete.**

### PRODUCT INFORMATION

- For technical assistance, contact us at **1-800-824-3005**.
- Visit our website at [www.leviton.com](http://www.leviton.com).

### Step 7 OPERATION



#### Dimmer:

**ON**  
Rotate top control knob clockwise – Lights will turn ON at level set by knob.

**OFF**  
Rotate top control knob fully counter-clockwise – Lights will turn OFF.

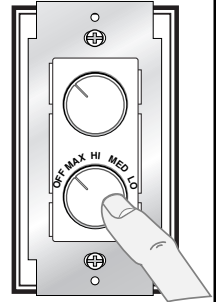
**BRIGHTEN**  
Rotate top control knob clockwise to desired brightness level.

**DIM**  
Rotate top control knob counter-clockwise to desired dim level.

#### Fan Speed:

**ON**  
Rotate bottom control knob to each of the four levels: MAX, HI, MED, and LO – Fan will increase or decrease in speed respectively for desired level.

**OFF**  
Rotate bottom control knob counter-clockwise to the OFF position – Fan will turn OFF.



### TROUBLESHOOTING

- Fan does not turn ON or does not run Multispeed
  - Circuit breaker or fuse has tripped.
  - Fan is not connected to line Neutral.
  - Switch on Fan not set to HIGH position.
  - Fan and light miswired.
- Light does not turn ON
  - Circuit breaker or fuse has tripped.
  - Bulb has burned out.
  - Lamp is not connected to line Neutral.
  - Switch on Fan unit controlling Light is not in the ON position (if applicable).
  - Fan and light miswired.

**For non-standard wiring applications, refer to Wire Nut and Conductor Size Chart**

#### WIRE NUT / # OF CONDUCTOR COMBINATION CHART

1- #12 w/ 1 to 3 #14, #16 or #18
2- #12 w/ 1 or 2 #16 or #18
1- #14 w/ 1 to 4 #16 or #18
2- #14 w/ 1 to 3 #16 or #18

#### LIMITED 5 YEAR WARRANTY AND EXCLUSIONS

Leviton warrants to the original consumer purchaser and not for the benefit of anyone else that this product at the time of its sale by Leviton is free of defects in materials and workmanship under normal and proper use for five years from the purchase date. Leviton's only obligation is to correct such defects by repair or replacement, at its option, if within such five year period the product is returned prepaid, with proof of purchase date, and a description of the problem to **Leviton Manufacturing Co., Inc., Att: Quality Assurance Department, 59-25 Little Neck Parkway, Little Neck, New York 11362-2591**. This warranty excludes and there is disclaimed liability for labor for removal of this product or reinstallation. This warranty is void if this product is installed improperly or in an improper environment, overloaded, misused, opened, abused, or altered in any manner, or is not used under normal operating conditions or not in accordance with any labels or instructions. There are no other or implied warranties of any kind, including merchantability and fitness for a particular purpose, but if any implied warranty is required by the applicable jurisdiction, the duration of any such implied warranty, including merchantability and fitness for a particular purpose, is limited to five years. Leviton is not liable for incidental, indirect, special, or consequential damages, including without limitation, damage to, or loss of use of, any equipment, lost sales or profits or delay or failure to perform this warranty obligation. The remedies provided herein are the exclusive remedies under this warranty, whether based on contract, tort or otherwise.