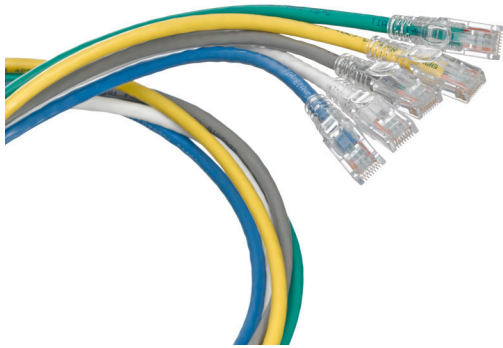


## eXtreme® Cat 5e SlimLine Boot UTP Patch Cords

5D460-xxx

### APPLICATION

Leviton eXtreme SlimLine patch cords feature low-profile strain-relief boots to support today's high-density applications. Patch cords are designed to be used with high-density panels and switches. The snagless design makes SlimLine patch cords an excellent choice in environments with frequent moves, adds, and changes.



### FEATURES

- Independently tested and verified by Intertek (ETL) for Cat 5e component performance
- Improved plug access in tight spaces
- Snagless plug design
- Stranded conductor for longer flex-life
- Improved strain relief

### DESIGN CONSIDERATIONS

- ANSI/TIA channel performance limits total length of patching and equipment cords to 32 feet (10 meters) per ANSI/TIA-568-C.2
- A variety of colors for color coding or organization
- Available in four standard lengths (custom lengths also available)

### STANDARDS COMPLIANCE

- ANSI/TIA-568-C.2
- ISO/IEC 11801
- ANSI/TIA-1096-A (formerly FCC Part 68)
- cULus Listed
- RoHS
- UL 444 CM rated
- IEEE 802.3at (Type 1) PoE up to 15.4 watts
- IEEE 802.3at (Type 2) PoE+ up to 30 watts
- IEEE Draft 802.3bt (Type 3) PoE+ up to 60 watts
- Cisco Universal Power Over Ethernet (UPOE) up to 60 watts

### SPECIFICATION

Patch cords shall meet or exceed requirements for Cat 5e performance described in ANSI/TIA-568-C.2. Patch cords shall be stranded conductor with an 8-position modular plug on each end. The cords shall be available in lengths of 3, 5, 7, and 10 feet. Patch cords shall include a narrow-profile boot and a snag-free latch. Patch cord plug shall have industry-standard, ANSI/TIA-1096-A compliant 50 micro inches of gold plating.

### COUNTRY OF ORIGIN

China

### PHYSICAL SPECIFICATIONS

Dimensions: See page two  
Outer Diameter (O.D.): 0.22"  
Materials: 24-gauge, UTP stranded conductor, modular non-keyed, 8-position, 8-conductor plug, 94V-0 rated  
Colors: White, yellow, blue, green, grey

### WARRANTY INFORMATION

Limited Product and Limited Extended Warranties are rendered VOID if the installed structured cabling system is used for PoE applications that exceed the product's specified power rating. For a copy of Leviton product warranties, visit [www.leviton.com/warranty](http://www.leviton.com/warranty).

#### Leviton Network Solutions

2222 - 222nd St. SE  
Bothell, WA 98021-4416

tel 1-800-824-3005  
tel +1-425-486-2222  
appeng@leviton.com  
[www.leviton.com](http://www.leviton.com)

#### Asia / Pacific

T +1.631.812.6228  
E infoasean@leviton.com

#### Europe

T +44.0.1592.772124  
E customerservice@brand-rex.com

#### Canada

T +1.514.954.1840  
E pcservice@leviton.com

#### India / SAARC

T +971.4.886.4722  
E infoindia@leviton.com

#### Caribbean

T +1.954.593.1896  
E infocaribbean@leviton.com

#### Mexico

T +52.55.5082.1040  
E lsamarketing@leviton.com

#### China

T +852.2774.9876  
E infochina@leviton.com

#### Middle East & Africa

T +971.4.886.4722  
E lmeinfo@leviton.com

#### Colombia

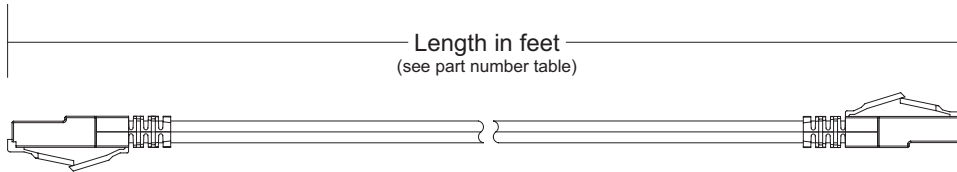
T +57.1.743.6045  
E infocolombia@leviton.com

#### South Korea

T +82.2.3273.9963  
E infokorea@leviton.com

**ELECTRONIC FILES**

For CAD files, typical specs, or technical drawings (.DXF, .DWG), visit [www.leviton.com](http://www.leviton.com).



**5D460-xxx**

**EXTREME® CAT 5E SLIMLINE BOOT UTP PATCH CORDS – STOCKED ITEMS**

Description	White	Yellow	Blue	Green	Grey
Cat 5e SlimLine Boot UTP Patch Cord, 3 feet (0.9 m)	5D460-03W	5D460-03Y	5D460-03L	5D460-03G	5D460-03S
Cat 5e SlimLine Boot UTP Patch Cord, 5 feet (1.5 m)	5D460-05W	5D460-05Y	5D460-05L	5D460-05G	5D460-05S
Cat 5e SlimLine Boot UTP Patch Cord, 7 feet (2.1 m)	5D460-07W	5D460-07Y	5D460-07L	5D460-07G	5D460-07S
Cat 5e SlimLine Boot UTP Patch Cord, 10 feet (3.0 m)	5D460-10W	5D460-10Y	5D460-10L	5D460-10G	5D460-10S

NOTE: Other lengths are available by special order. Please contact customer service for more information.



For assistance customizing your patch cords, please visit [www.leviton.com/configurator](http://www.leviton.com/configurator) or call Tech Support at 800.824.3005.



<b>Leviton Network Solutions</b> 2222 - 222nd St. SE Bothell, WA 98021-4416  tel 1-800-824-3005 tel +1-425-486-2222 appeng@leviton.com www.leviton.com	<b>Asia / Pacific</b> T +1.631.812.6228 E infoasean@leviton.com	<b>Canada</b> T +1.514.954.1840 E pcservice@leviton.com	<b>Caribbean</b> T +1.954.593.1896 E infocaribbean@leviton.com	<b>China</b> T +852.2774.9876 E infochina@leviton.com	<b>Colombia</b> T +57.1.743.6045 E infocolombia@leviton.com
	<b>Europe</b> T +44.0.1592.772124 E customerservice@brand-rex.com	<b>India / SAARC</b> T +971.4.886.4722 E infoindia@leviton.com	<b>Mexico</b> T +52.55.5082.1040 E lsamarketing@leviton.com	<b>Middle East &amp; Africa</b> T +971.4.886.4722 E lmeinfo@leviton.com	<b>South Korea</b> T +82.2.3273.9963 E infokorea@leviton.com