



Detect equipment risks early with 24/7 thermal monitoring

Upgrade with Asset Connect

Why continuous monitoring?

Loose power connections in low or medium voltage (LV or MV) products are one of the most sensitive concerns for electrical substations and includes:

- MV cable connections
- MV busbars connections or LV busways
- Withdrawable CB connections

Connection defects cause increased resistance in contact points which can lead to thermal runaway, connection destruction, and fire hazards.

Periodical infrared inspection has limited accessibility and visibility of the contacts. Continuous thermal monitoring is an effective way for loose connections early detection.

Humidity monitoring can detect ventilation system failure risks early to help ensure proper operating conditions.

Benefits

- Prevent unscheduled downtime
- Increase safety (operators and installations)
- Allow condition based maintenance
- Maximize service continuity, anticipate possible disruptions
- Protect the investment, maximizing the equipment lifetime

schneider-electric.us/upgradesolutions

Schneider
Electric

Upgrade with Asset Connect

Asset Connect helps you to upgrade your installation with smart sensors, to transform non-communicating equipment into connected assets.

These upgrades open electrical installations to the full spectrum of advanced capabilities, such as preventive or predictive asset performance management services.

What do you get with Asset Connect?

- HMI display
- Alarm through SMS
- SCADA connection
- Preventive asset performance management
- Predictive asset performance management

Apps and analytics - Cloud services level



EcoStruxure Facility Advisor



EcoStruxure Asset Advisor

Edge control - Facility level

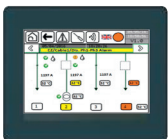


EcoStruxure Power Scada Expert



EcoStruxure Power Monitoring Expert

Connected control - Equipment level



HMI (Substation monitoring device)

Upgradable equipment

LV Switchgear/switchboard*

LV panel could be upgraded with thermal sensors that are available for:

- Main sections
- Feeders (options)
- Masterpact circuit breaker

Humidity sensors are available for different panel compartments.

LV busway*

LV busway could be upgraded with thermal sensors that are available for:

- NEMA I-LINE

Power and distribution transformers*

Transformer could be upgraded with thermal sensors and digital control relays. Thermal sensors are available for LV connections. MV connections could also be monitored.

Transformers	Thermal sensors location
Padmount or Liquid Filled	LV and MV connections, winding, tapping

MV switchgear	Thermal Sensors Location
Range	Thermal Sensors Location
MasterClad 15kV	Main bus, Cables
MasterClad AR 15kV	Main bus, Cables
Motorpact	Upper fuse connector, cables
HVL/cb	Cables
HVL/cb AR	Cables

Electrical substation
Sensors
Humidity sensor

schneider-electric.us/upgradesolutions



Schneider Electric USA, Inc
800 Federal Street
Andover MA 01810-1067