

# Product End-of-Life Instructions

ALTIVAR 61 90 - 800 kW

ALTIVAR 71 90 - 630 kW

## Product Range

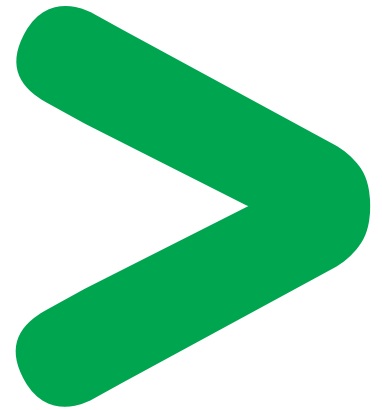
ALTIVAR 61 90 - 800 kW

ALTIVAR 71 90 - 630 kW

## Marketing Model

ATV61HC16N4 and all models of Product Family: ALTIVAR 61 90 - 800 kW

ATV71HC13N4 and all models of Product Family: ALTIVAR 71 90 - 630 kW



## Size (mm):

W x H x D: 340 x 1190 x 377

## Weight (excluding packaging) in Kg:

114



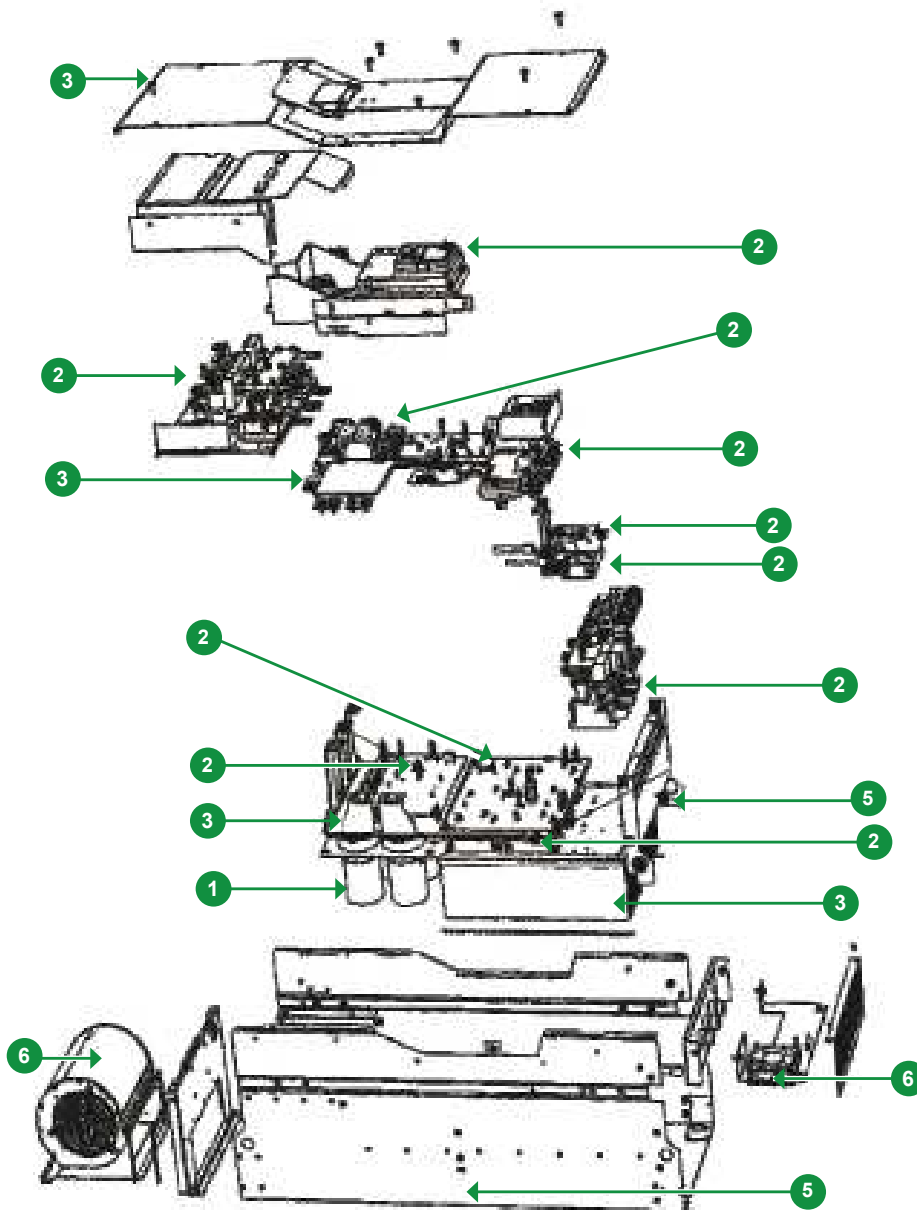
## Operations recommended for the end of life treatment

There are several steps to process the products at the end of life so as to recover components, materials or energy :

Reuse ⇒ Depollution ⇒ Dismantling ⇒ Shredding

The components of the products that are recommended to be depolluted (according to the WEEE 2002/96/EC list) or that are recommended to be re-used or dismantled so as to improve the material recovery or that lead to some hazards are listed, identified and located hereunder.

This ATV71 contains electrolytic capacitors which may cause electrical shock during the end of life treatment process. **BEFORE SERVICING, REMOVE ALL POWER and WAIT 15 MINUTES.**



Types of Components	Number on drawing	Components description	Total mass per types (Kg)
Components listed for operating hazards	①	Electrolytic Capacitors	1
Components listed for reuse	None	None	None
Components listed for depollution	①	Electrolytic Capacitors	1
	②	Printed Circuit Board Assemblies (PCBA) + Cables (not shown)	3
	③	Aluminium (heatsink)	20
	④	Copper and alloys	10
	⑤	Steel	36
Other components and parts listed for Shredding operations	⑥	Miscellaneous	43

#### Schneider Electric Industries SAS

35, rue Joseph Monier  
CS30323  
F - 92506 Rueil Malmaison Cedex

RCS Nanterre 954 503 439  
Capital social 896 313 776 €  
www.schneider-electric.com

The version of the Guide used to create the document: End of Life Instruction Drafting Guide of Schneider Electric version V1.

Publication : Schneider Electric