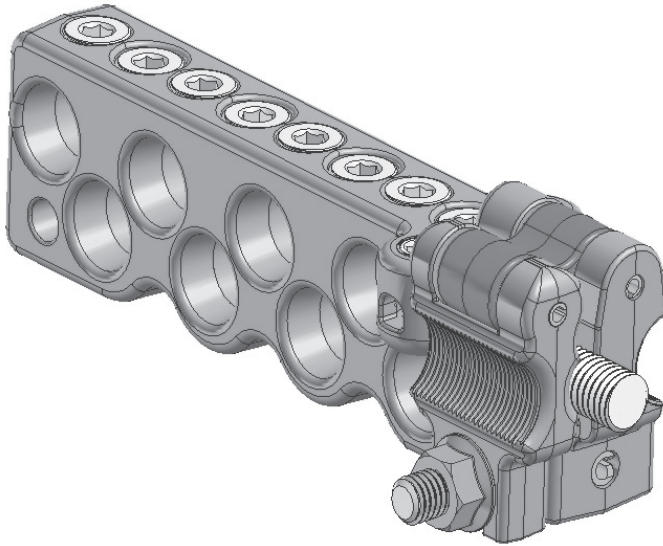




SET SCREW BAR TRANSFORMER CONNECTORS TOGGLE LATCH

ALUMINUM

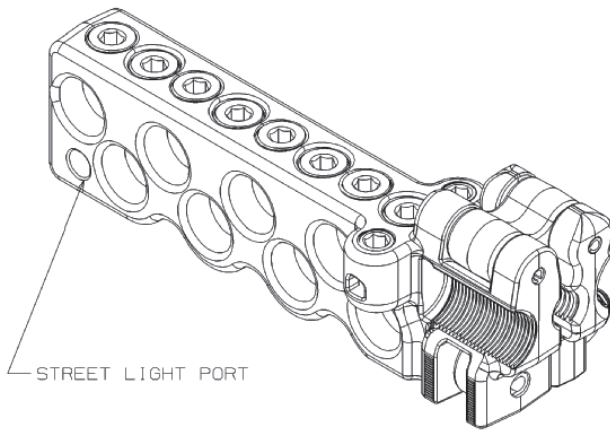
UTSB



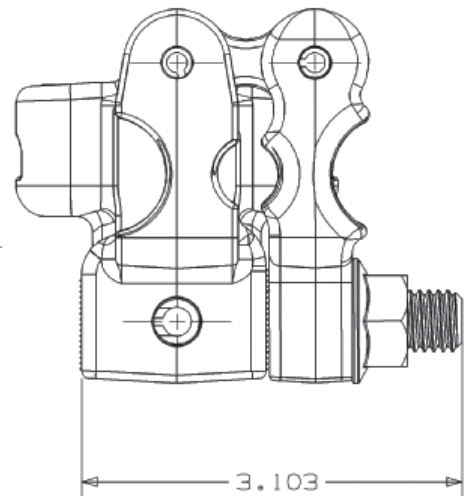
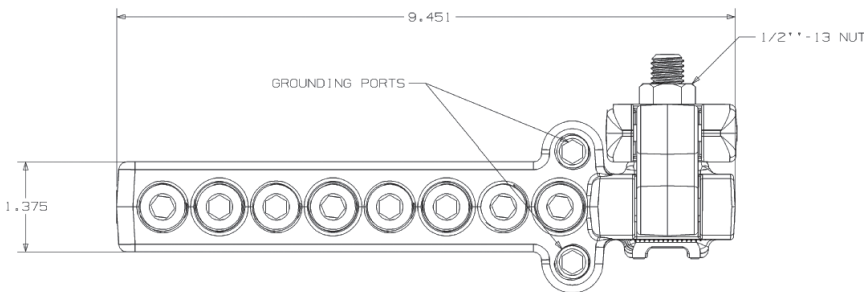
- For connecting secondary underground applications to transformer studs.
- Innovative "Toggle Latch" mechanism provides unmatched ease of installation, along with superior electrical performance.
- One part accepts both 5/8"-11 and 1"-14 threads.
- Reduced inventory; one part accepts both 5/8"-11 and 1"-14 thread transformer studs.
- Oxide Inhibiting Compound provided as standard in stud and tap holes.
- 5/16" allen set screws provide constant pressure on conductors.
- Testing meets or exceeds ANSI C119.6 Class "A" tests.
- Redundant ground ports provided for use on neutral phase connections.
- Toggle nut is 3/4" across flats, fits standard GP223 Speed Wrench.

Material: **Body** - Aluminum Alloy
Hardware - High Strength Steel
Boot/Cover - Poly-vinyl Chloride (PVC)

Note: Not suitable for submersible installations.



STREET LIGHT PORT



Product Data & Conductor Size

| CATALOG NUMBER | TRANS- FORMER STUD SIZES | CONDUCTOR RANGE | | | MAIN PORTS | STREET LIGHT PORTS | GROUND PORTS | PACKAGING PER BOX | |
|----------------|-----------------------------------|------------------|-------------------|------------------|------------|--------------------|--------------|-------------------|--------------|
| | | MAIN PORTS | STREET LIGHT PORT | REDUNDANT GROUND | | | | UNITS | WEIGHT (LBS) |
| UTSB8500L | 5/8"-11 & 1"-14" | #6 SOL - 500 MCM | #12 SOL - 1/0 SOL | #12 SOL - #2 SOL | 8 | 1 | 2 | 12 | 36 |
| | | 0.162" - 0.813" | 0.081" - 0.325" | 0.081" - 0.258" | | | | | |

NOTE: Add suffix "C" for clear PVC cover included in package "UTSB8500CL. Factory applied inhibitor (HTJC) included standard.
Cover Part Number: CTL8500