



Double Ended Linear

Double Ended Linear 500T3Q/P/CL 125-130V 12PK

High-quality white light with superior lumen performance Halogen Double Ended lamps provide bright, white light for work lights and security lighting. Rugged construction for busy work sites. Offered in several lengths to meet most application needs. High lumen output provides light where you need it.

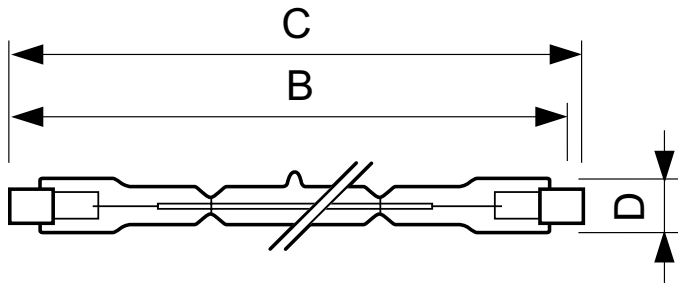
Product data

General Information	
Cap-Base	R7S [R7s]
Operating Position	Universal [Universal]
Nominal Lifetime (Nom)	2000 h
Light Technical	
Initial lumen (Nom)	9200 lm
Correlated Color Temperature (Nom)	2900 K
Luminous Efficacy (rated) (Nom)	18.4 lm/W
Color Rendering Index (Nom)	100
Operating and Electrical	
Power (Rated) (Nom)	500 W
Lamp Current (Nom)	3.94 A
Starting Time (Nom)	0.0 s
Voltage (Nom)	127 V
Controls and Dimming	
Dimmable	Yes

Mechanical and Housing	
Bulb Finish	Clear (CL)
Approval and Application	
Energy Efficiency Label (EEL)	D
Luminaire Design Requirements	
Bulb Temperature (Max)	900 °C
Pinch Temperature (Max)	350 °C
Product Data	
Order product name	Double Ended Linear 500T3Q/P/CL 125-130V 12PK
EAN/UPC - Product	046677132231
Order code	132233
Numerator - Quantity Per Pack	1
Numerator - Packs per outer box	12
Material Nr. (12NC)	924735535893
Net Weight (Piece)	0.010 kg

Double Ended Linear

Dimensional drawing



Product	D (max)	B (max)	B	B (min)	C (max)
Double Ended Linear	12 mm	115.8 mm	114.2 mm	112.6 mm	117.6 mm
500T3Q/P/CL 125-130V 12PK					

DESmall 500W R7s 127V

