

Rittal – The System.

Faster – better – everywhere.

► Support rail TS 35/7.5 to EN 60 715 for KL, KL-HD, AE – SZ 2314.000

Date : May 25, 2018

ENCLOSURES

POWER DISTRIBUTION

CLIMATE CONTROL

IT INFRASTRUCTURE

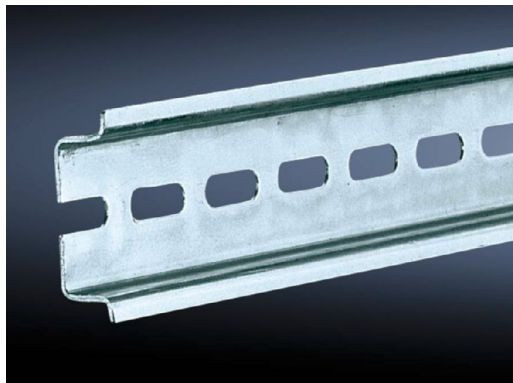
SOFTWARE & SERVICES

FRIEDHELM LOH GROUP



Support rail TS 35/7.5 to EN 60 715 for KL, KL-HD, AE – SZ 2314.000

created: 25.05.2018 build on www.rittal.com/us-en



Product description

Description: For snapping on terminals or other components using latching technology as per EN 60 715.

Material: Carbon steel

Surface finish: Zinc-plated

Product features

Suitable for: Enclosure type: KL
Enclosure type: AE
Enclosure type: KL-HD
Width: 150 mm (5.9 ")

Length of support rail: 137 mm (5.4 ")

Packaging unit: 10 pc(s).

Weight/packaging unit: 0.44 kg (1 lb.)

EAN: 4028177021006

Customs tariff number: 73269098

ETIM 6.0: EC001285

ETIM 5.0: EC000212

eCl@ss 8.0/8.1:	27189234
eCl@ss 7.0/7.1:	23159101
eCl@ss 6.0/6.1:	23159101
eCl@ss 5.1/5.1.4:	27189250
Product description (long):	SZ Support rail TS 35/7.5 to EN 60 715, for KL, KL-HD, AE, for W: 150 mm, L: 137 mm
Approvals	
Certificates:	EAC