

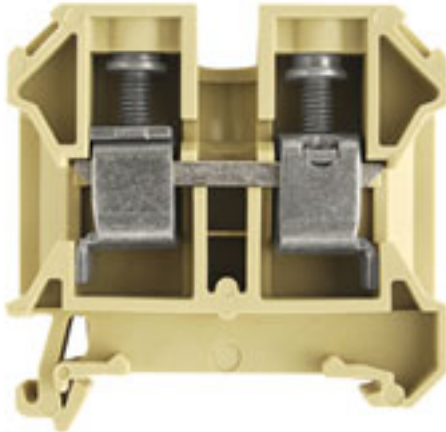
SAK 16/35 PA**Weidmüller Interface GmbH & Co. KG**

Klingenbergstraße 26

D-32758 Detmold

Germany

www.weidmueller.com

Product image**Klippon® Connect with clamping yoke Technology**

The high reliability and variety of designs of the terminal blocks with clamping yoke connections make planning easier and optimises operational safety. Klippon® Connect provides a proven response to a range of different requirements.

General ordering data

| | |
|------------|--|
| Version | SAK Series, Feed-through terminal, Rated cross-section: 16 mm ² , Screw connection, beige |
| Order No. | 0380660000 |
| Type | SAK 16/35 PA |
| GTIN (EAN) | 4008 1901 18204 |
| Qty. | 50 pc(s). |

Creation date December 29, 2021 9:15:12 PM CET

Catalogue status 17.12.2021 / We reserve the right to make technical changes.

SAK 16/35 PA

Weidmüller Interface GmbH & Co. KG

Klingenbergstraße 26

D-32758 Detmold

Germany

www.weidmueller.com

Technical data

Dimensions and weights

| | | | |
|------------|---------|-----------------|------------|
| Depth | 57.5 mm | Depth (inches) | 2.264 inch |
| Height | 50 mm | Height (inches) | 1.969 inch |
| Width | 12 mm | Width (inches) | 0.472 inch |
| Net weight | 26.2 g | | |

Temperatures

| | | | |
|----------------------------------|----------------|----------------------------------|---|
| Storage temperature | | Operating temperature range | For operating temperature range see EC Design Test Certificate / IEC Ex-Certificate of Conformity |
| | -25 °C...55 °C | | |
| Continuous operating temp., min. | -50 °C | Continuous operating temp., max. | 100 °C |

Material data

| | | | |
|---------------------------|-------|--------|----------------|
| Material | PA 66 | Colour | beige / yellow |
| UL 94 flammability rating | V-2 | | |

Rating data IECEx/ATEX

| | | | |
|--------------------------------|---|---------------------------------|--------------------|
| Certificate No. (ATEX) | TUEV18ATEX8207U | Certificate No. (IECEX) | IECEXTUR18.0017U |
| Max. voltage (ATEX) | 690 V | Current (ATEX) | 74.5 A |
| Wire cross section max. (ATEX) | 16 mm ² | Max. voltage (IECEX) | 690 V |
| Current (IECEX) | 74.5 A | Wire cross section max. (IECEX) | 16 mm ² |
| Operating temperature range | For operating temperature range see EC Design Test Certificate / IEC Ex-Certificate of Conformity | Marking EN 60079-7 | |
| | | | Ex eb II C Gb |
| Ex 2014/34/EU label | II 2 G D | | |

System specifications

| | | | |
|-------------------------------------|---|-------------------------------|-----|
| Version | Screw connection, for screwable cross-connection, One end without connector | End cover plate required | Yes |
| Number of potentials | 1 | Number of levels | 1 |
| Number of clamping points per level | 2 | Number of potentials per tier | 1 |
| Levels cross-connected internally | No | PE connection | No |
| Rail | TS 35 | N-function | No |
| PE function | No | PEN function | No |

Additional technical data

| | | | |
|--------------------------|-------|-----------------------------|---------|
| Explosion-tested version | No | Number of similar terminals | 1 |
| Open sides | right | Type of mounting | Snap-on |

CSA rating data

| | | | |
|-------------------------------|----------------|-------------------------------|-------|
| Certificate No. (CSA) | 154685-1501714 | Current size C (CSA) | 87 A |
| Voltage size C (CSA) | 600 V | Wire cross section max. (CSA) | 4 AWG |
| Wire cross section min. (CSA) | 14 AWG | | |

SAK 16/35 PA

Weidmüller Interface GmbH & Co. KG

Klingenbergstraße 26

D-32758 Detmold

Germany

www.weidmueller.com

Technical data

Conductors for clamping (additional connection)

Conductor cross-section, flexible plus plastic collar DIN 46228/1, further connection, max. 16 mm²

Conductors for clamping (rated connection)

| | | | |
|---|---------------------|---|---------------------|
| Blade size | 1.0 x 5.5 mm | Clamping range, max. | 16 mm ² |
| Clamping range, min. | 2.5 mm ² | Clamping screw | M 4 |
| Connection cross-section, stranded, max. | 16 mm ² | Connection cross-section, stranded, min. | 4 mm ² |
| Connection direction | on side | Gauge to IEC 60947-1 | B6 |
| Number of connections | 2 | Stripping length | 15 mm |
| Tightening torque, max. | 2.64 Nm | Tightening torque, min. | 2 Nm |
| Torque level with DMS electric screwdriver | 4 | Twin wire-end ferrules, max. | 10 mm ² |
| Twin wire-end ferrules, min. | 1.5 mm ² | Type of connection | Screw connection |
| Wire connection cross section AWG, max. | AWG 6 | Wire connection cross section AWG, min. | AWG 12 |
| Wire connection cross section, finely stranded, max. | 16 mm ² | Wire connection cross section, finely stranded, min. | 4 mm ² |
| Wire connection cross-section, finely stranded with wire-end ferrules DIN 46228/1, max. | 16 mm ² | Wire connection cross-section, finely stranded with wire-end ferrules DIN 46228/1, min. | 4 mm ² |
| Wire connection cross-section, finely stranded with wire-end ferrules DIN 46228/4, max. | 16 mm ² | Wire connection cross-section, finely stranded with wire-end ferrules DIN 46228/4, min. | 4 mm ² |
| Wire connection cross-section, solid core, max. | 16 mm ² | Wire connection cross-section, solid core, min. | 2.5 mm ² |

General

| | | | |
|---|-------|---|---------------|
| Rail | TS 35 | Standards | IEC 60947-7-1 |
| Wire connection cross section AWG, max. | AWG 6 | Wire connection cross section AWG, min. | AWG 12 |

Rating data

| | | | |
|---------------------------------|--------------------|--|---------|
| Rated cross-section | 16 mm ² | Rated voltage | 1,000 V |
| Rated current | 76 A | Current at maximum wires | 76 A |
| Standards | IEC 60947-7-1 | Volume resistance according to IEC 60947-7-x | 0.42 mΩ |
| Rated impulse withstand voltage | 8 kV | Power loss in accordance with IEC 60947-7-x | 2.43 W |
| Pollution severity | 3 | | |

UL rating data

| | | | |
|---|--------|---|-------|
| Certificate No. (UR) | E60693 | Conductor size Factory wiring max. (UR) | 4 AWG |
| Conductor size Factory wiring min. (UR) | 12 AWG | Conductor size Field wiring max. (UR) | 4 AWG |
| Conductor size Field wiring min. (UR) | 12 AWG | Current size C (UR) | 80 A |
| Voltage size C (UR) | 600 V | | |

SAK 16/35 PA

Weidmüller Interface GmbH & Co. KG

Klingenbergstraße 26

D-32758 Detmold

Germany

www.weidmueller.com

Technical data

Classifications

| | | | |
|-------------|-------------|-------------|-------------|
| ETIM 6.0 | EC000897 | ETIM 7.0 | EC000897 |
| ETIM 8.0 | EC000897 | ECLASS 9.0 | 27-14-11-20 |
| ECLASS 9.1 | 27-14-11-20 | ECLASS 10.0 | 27-14-11-20 |
| ECLASS 11.0 | 27-14-11-20 | | |

Approvals

Approvals



| | |
|-----------------------|---------|
| ROHS | Conform |
| UL File Number Search | E60693 |

Downloads

| | |
|---|--|
| Approval/Certificate/Document of Conformity | Attestation of Conformity CB Certificate CB Test Certificate EAC certificate DNVGL certificate Lloyds Register Certificate MARITREG Certificate EAC EX Certificate Declaration of Conformity CE Declaration of Conformity all terminals |
| Engineering Data | CAD data – STEP |
| Engineering Data | EPLAN_WSCAD |
| Product Change Notification | 20210308 Technical Change SAK PA 35 |
| User Documentation | StorageConditionsTerminalBlocks NTI SAK 16/35 |
| Catalogues | Catalogues in PDF-format |