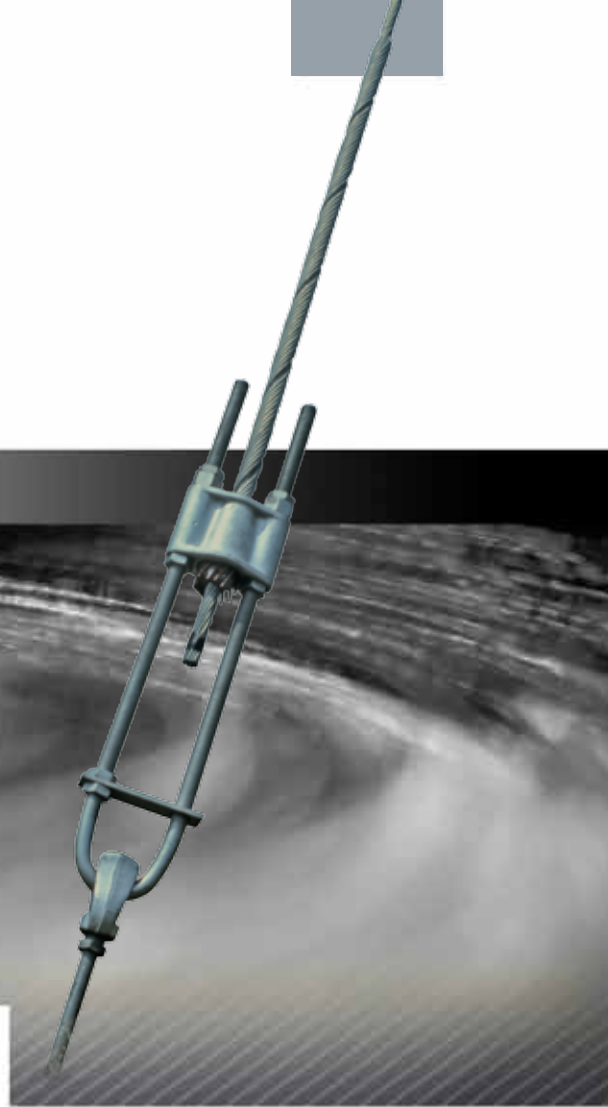


CHANGE[®]

Adjust-A-Grip[®]

Deadend Grips

Catalog 15 July 2012



Adjust-A-Grip® Deadend Grips

• for structure attachment of guy strand*

Quick and easy to install. No special tools, eyes pins, thimbles, clevises, twisted-loop grips.

By design, each size is rated to hold more than the rated breaking strength of the guy strand it fits (see tables below).

Proper tensioning: With rod subsets unwrapped, wedge and socket assembly retains a substantial percentage of strand strength rating. For proper deadend performance, guy tension should be at least 5% of strength rating at time of structure erection and at least 10% after final tensioning.

For use on galvanized strand ASTM A475 or aluminum-coated strand per A474 and/or B416. **See dimensions and hardware recommendations on page 15-3.**

for Galvanized-Steel Strands per ASTM A475

| Catalog Number | Strand Size | Strength Rating, lb. | Color Code | Weight per 100, lb. |
|----------------|------------------------|----------------------|------------|---------------------|
| 12GA0 | 1/2" Dia. 7 or 19W | 26,900 | Blue | 675 |
| 916GA0 | 9/16" Dia. 7 or 19W | 35,000 | Yellow | 675 |
| 58GA0 | 5/8" Dia. 7 or 19W | 42,400 | Black | 413 |
| 34GA0 | 3/4" Dia. 19W | 58,300 | Red | 588 |
| 78GA0 | 7/8" Dia. 19W | 79,700 | Green | 1,550 |
| 1GA0 | 1" Dia. 19 or 37W | 104,500 | Blue | 2,300 |

LEFT-HAND LAY STANDARD

for Aluminum-coated Strands per ASTM A474 or B416

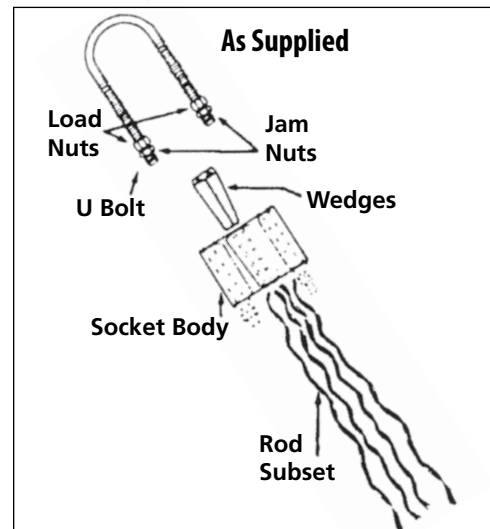
| | | | | |
|----------|---------------------------|---------|--------|-------|
| 572AWA0 | 0.572" Dia. 19-No. 9 | 34,290 | Yellow | 650 |
| 642AWA0 | 0.642" Dia. 19-No. 8 | 43,240 | Black | 413 |
| 717AWA0 | 0.713" Dia., 37-No. 10 | 52,950 | Red | 575 |
| | 0.721" Dia., 19-No. 7 | 51,730 | | |
| 805AWA0 | 0.801" Dia. 37-No. 9 | 66,770 | Green | 1,500 |
| | 0.810" Dia. 19-No. 6 | 61,700 | | |
| 905AWA0 | 0.899" Dia. 37-No. 8 | 84,200 | Blue | 2,200 |
| | 0.910" Dia. 19-No. 5 | 73,350 | | |
| 1010AWA0 | 1.010" Dia. 37-No. 7 | 100,700 | Orange | 2,300 |
| 1130AWA0 | 1.130" Dia. 37-No. 6 | 120,200 | Yellow | 3,650 |
| 1270AWA0 | 1.270" Dia., 37-No. 5 | 142,900 | Black | 7,800 |

LEFT-HAND LAY STANDARD



These "zero-adjust" Adjust-A-Grip deadend grips apply at the structure end of guy strands.

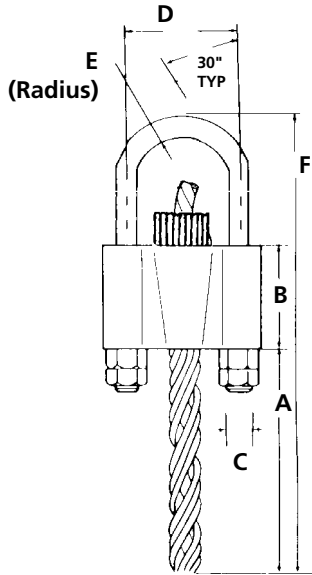
*See page 15-4 for adjustable (18" of U-bolt adjustment) Adjust-A-Grip deadend grips to apply at the anchor end on same guy strand sizes.



Adjust-A-Grip[®] Deadend Grips

• Non-Adjustable Type, for Structure End of Guy Strand

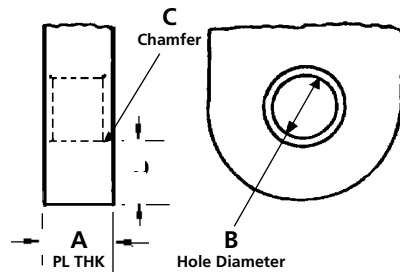
See page 15-2 for Ordering Information.



DIMENSIONAL DATA

| Catalog No. | Dimension | | | | | |
|-------------|----------------------------------|---------------------------------|---------------------------------|---------------------------------|---------------------------------|-----|
| | A | B | C | D | E | F |
| 12GA0 | 27" | 3 ¹ / ₄ " | 5 ⁵ / ₈ " | 3 ¹ / ₄ " | 3 ³ / ₄ " | 34" |
| 916GA0 | 28" | 3 ¹ / ₄ " | 5 ⁵ / ₈ " | 3 ¹ / ₄ " | 3 ³ / ₄ " | 35" |
| 58GA0 | 31 ¹ / ₂ " | 3 ¹ / ₂ " | 3 ³ / ₄ " | 3 ¹ / ₂ " | 1 ¹ / ₄ " | 39" |
| 34GA0 | 36" | 4" | 7 ⁷ / ₈ " | 4" | 1 ¹ / ₄ " | 45" |
| 78GA0 | 36 ¹ / ₂ " | 4 ¹ / ₂ " | 1" | 4 ¹ / ₂ " | 1 ¹ / ₂ " | 46" |
| 1GA0 | 45" | 5" | 1 ¹ / ₈ " | 5 ³ / ₈ " | 1 ¹ / ₂ " | 56" |
| 572AWA0 | 27" | 3 ¹ / ₄ " | 5 ⁵ / ₈ " | 3 ¹ / ₄ " | 3 ³ / ₄ " | 34" |
| 642AWA0 | 28 ¹ / ₂ " | 3 ¹ / ₂ " | 3 ³ / ₄ " | 3 ¹ / ₂ " | 1 ¹ / ₄ " | 36" |
| 717AWA0 | 33" | 4" | 7 ⁷ / ₈ " | 4" | 1 ¹ / ₄ " | 42" |
| 805AWA0 | 36 ¹ / ₂ " | 4 ¹ / ₂ " | 1" | 4 ¹ / ₂ " | 1 ¹ / ₂ " | 46" |
| 905AWA0 | 41" | 5" | 1 ¹ / ₈ " | 5 ³ / ₈ " | 1 ¹ / ₂ " | 52" |
| 1010AWA0 | 45" | 5" | 1 ¹ / ₈ " | 5 ³ / ₈ " | 1 ¹ / ₂ " | 56" |
| 1130AWA0 | 48 ¹ / ₂ " | 5 ¹ / ₂ " | 1 ¹ / ₄ " | 5 ³ / ₈ " | 2" | 61" |
| 1270AWA0 | 53 ¹ / ₂ " | 6 ¹ / ₂ " | 1 ³ / ₈ " | 7 ⁷ / ₈ " | 2" | 67" |

Detail of Steel Plate at Structure End:



HARDWARE RECOMMENDATIONS

Installation on Plate

Recommended distances at left, below, ensure that interference cannot occur between Adjust-A-Grip deadend grip U-bolt and the attachment plate.

Installation on Shackle

If Adjust-A-Grip deadend grips are installed on a pin, as in a shackle, the minimum pin diameters are as follow:

| ADJUST-A-GRIP DEADEND SIZES | U-BOLT DIAMETER | RECOMMENDED PLATE DIMENSIONS | | | | MINIMUM PIN DIA. |
|-----------------------------|---------------------------------|----------------------------------|---------------------------------|--|---------------------------------|---------------------------------|
| | | A | B | C | D | |
| 12GA0, 916GA0, 572AWA0 | 5 ⁵ / ₈ " | 1 ¹ / ₁₆ " | 1" | 1 ¹ / ₈ " x 45° | 1" | 7 ⁷ / ₈ " |
| 58GA0, 642AWA0 | 3 ³ / ₄ " | 1 ¹ / ₈ " | 1 ¹ / ₄ " | 1 ¹ / ₈ " x 45° | 1 ¹ / ₈ " | 7 ⁷ / ₈ " |
| 34GA0, 717AWA0 | 7 ⁷ / ₈ " | 1 ³ / ₈ " | 1 ¹ / ₂ " | 1 ¹ / ₈ " x 45° | 1 ¹ / ₄ " | 1 ¹ / ₈ " |
| 78GA0, 805AWA0 | 1" | 1 ⁵ / ₈ " | 1 ¹ / ₂ " | 3 ³ / ₁₆ " x 45° | 1 ¹ / ₄ " | 1 ¹ / ₈ " |
| 1GA0, 905AWA0, 1010AWA0 | 1 ¹ / ₈ " | 1 ⁷ / ₈ " | 1 ³ / ₄ " | 1 ¹ / ₄ " x 45° | 1 ⁵ / ₈ " | 1 ³ / ₈ " |
| 1130AWA0 | 1 ¹ / ₄ " | 2 ¹ / ₈ " | 1 ³ / ₄ " | 1 ¹ / ₄ " x 45° | 1 ⁷ / ₈ " | 1 ¹ / ₂ " |
| 1270AWA0 | 1 ³ / ₈ " | 2 ¹ / ₄ " | 2 ⁷ / ₈ " | 5 ⁵ / ₁₆ " x 45° | 2" | 1 ³ / ₄ " |

For unusual applications or requirements, consult Hubbell Power Systems, Inc.

Adjust-A-Grip[®] Deadend Grips

• for anchor attachment of guy strand*

Quick and easy to install. No special tools, eyes pins, thimbles. Retensioning up to 18 inches at ground level without removal.

By design, each size is rated to hold more than the rated breaking strength of the guy strand it fits (see tables below).

Vandal resistant: With rod subsets unwrapped, wedge and socket assembly retains a substantial percentage of strand strength rating. For proper deadend performance, guy tension should be at least 5% of strength rating at time of structure erection and at least 10% after final tensioning.

For use on galvanized strand made per ASTM A475 or aluminum-coated strand per A474 and/or B416. See dimensions and hardware recommendations on page 15-5.

†Serving sleeves are required on adjustable Adjust-A-Grip deadend grips when used on structures of 200 ft. and taller. Contact Customer Service for ordering information.



With 18" of adjustment, these Adjust-A-Grip deadend grips apply at the anchor end of guy strands.

See page 15-2 for "zero-adjust" Adjust-A-Grip deadend grips to apply at structure end on same guy strand sizes.

for Galvanized-Steel Strands per ASTM A475

| †Catalog Number | Strand Size | Strength Rating, lb. | U-Bolt Adjustment | Color Code | Weight per 100, lb. |
|-----------------|------------------------|----------------------|-------------------|------------|---------------------|
| 12GA18 | 1/2" Dia. 7 or 19W | 26,900 | 18" | Blue | 1,000 |
| 916GA18 | 9/16" Dia. 7 or 19W | 35,000 | 18" | Yellow | 1,025 |
| 58GA18 | 5/8" Dia. 7 or 19W | 42,400 | 18" | Black | 663 |
| 34GA18 | 3/4" Dia. 19W | 58,300 | 18" | Red | 938 |
| 78GA18 | 7/8" Dia. 19W | 79,700 | 18" | Green | 2,450 |
| 1GA18 | 1" Dia. 19 or 37W | 104,500 | 18" | Blue | 3,450 |

LEFT-HAND LAY STANDARD

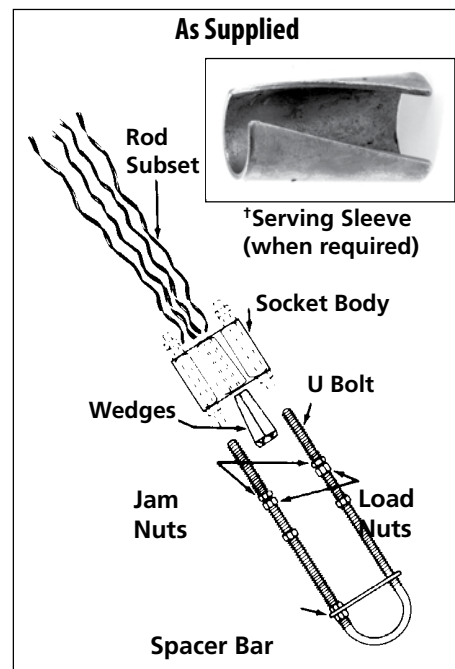
†To order the above Adjust-A-Grips with serving sleeve included, add the suffix "S" to the catalog number (i.e.: 12GA18S).

for Aluminum-coated Strands per ASTM A474 or B416

| | | | | | |
|-----------|--------------------------|---------|-----|--------|--------|
| 572AWA18 | 0.572" Dia. 19-No. 9 | 34,290 | 18" | Yellow | 1,000 |
| 642AWA18 | 0.642" Dia. 19-No. 8 | 43,240 | 18" | Black | 663 |
| 717AWA18 | 0.713" Dia. 37-No. 10 | 52,950 | 18" | Red | 925 |
| | 0.721" Dia., 19-No. 7 | 51,730 | | | |
| 805AWA18 | 0.801" Dia. 37-No. 9 | 66,770 | 18" | Green | 2,400 |
| | 0.810" Dia. 19-No. 6 | 61,700 | | | |
| 905AWA18 | 0.899" Dia. 37-No. 8 | 84,200 | 18" | Blue | 3,400 |
| | 0.910" Dia. 19-No. 5 | 73,350 | | | |
| 1010AWA18 | 1.010" Dia. 37-No. 7 | 100,700 | 18" | Orange | 3,500 |
| 1130AWA18 | 1.130" Dia. 37-No. 6 | 120,200 | 18" | Yellow | 4,950 |
| 1270AWA18 | 1.270" Dia. 37-No. 5 | 142,900 | 18" | Black | 10,000 |

LEFT-HAND LAY STANDARD

†To order the above Adjust-A-Grips with serving sleeve included, add the suffix "S" to the catalog number (i.e.: 572AWA18S).

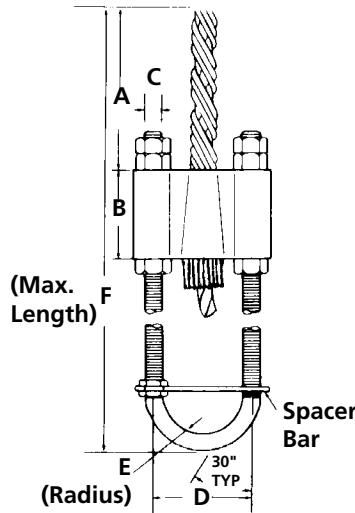


Adjust-A-Grip[®] Deadend Grips

• Adjustable Type, for Anchor End of Guy Strand

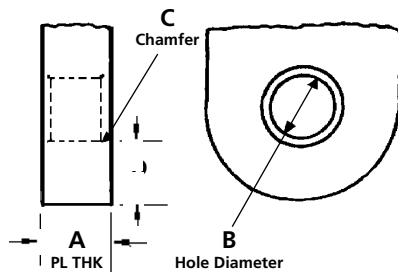
See page 15-4 for Ordering Information.

DIMENSIONAL DATA



| Catalog No. | Dimension | | | | | | Serving Sleeve Catalog No. |
|-------------|-----------|--------|--------|--------|--------|-----|----------------------------|
| | A | B | C | D | E | F | |
| 12GA18 | 27" | 3/4" | 5/8" | 3/4" | 3/4" | 51" | GA1 |
| 916GA18 | 28" | 3/4" | 5/8" | 3/4" | 3/4" | 52" | GA1 |
| 58GA18 | 31 1/2" | 3 1/2" | 3/4" | 3 1/2" | 1 1/4" | 56" | GA2 |
| 34GA18 | 36" | 4" | 7/8" | 4" | 1 1/4" | 62" | GA2 |
| 78GA18 | 36 1/2" | 4 1/2" | 1" | 4 1/2" | 1 1/2" | 63" | GA3 |
| 1GA18 | 45" | 5" | 1 1/8" | 5 3/8" | 1 1/2" | 73" | GA4 |
| 572AWA18 | 27" | 3/4" | 5/8" | 3/4" | 3/4" | 51" | GA1 |
| 642AWA18 | 28 1/2" | 3 1/2" | 3/4" | 3 1/2" | 1 1/4" | 53" | GA2 |
| 717AWA18 | 33" | 4" | 7/8" | 4" | 1 1/4" | 59" | GA3 |
| 805AWA18 | 36 1/2" | 4 1/2" | 1" | 4 1/2" | 1 1/2" | 63" | GA3 |
| 905AWA18 | 41" | 5" | 1 1/8" | 5 3/8" | 1 1/2" | 69" | GA4 |
| 1010AWA18 | 45" | 5" | 1 1/8" | 5 3/8" | 1 1/2" | 73" | GA4 |
| 1130AWA18 | 48 1/2" | 5 1/2" | 1 1/4" | 5 3/8" | 2" | 78" | GA5 |
| 1270AWA18 | 53 1/2" | 6 1/2" | 1 3/8" | 7 7/8" | 2" | 84" | GA5 |

Detail of Steel Plate at Structure End:



HARDWARE RECOMMENDATIONS

Installation on Plate

Recommended distances at left, below, ensure that interference cannot occur between Adjust-A-Grip deadend grip U-bolt and the attachment plate.

Installation on Shackle

If Adjust-A-Grip deadend grips are installed on a pin, as in a shackle, the minimum pin diameters are as follow:

| ADJUST-A-GRIP DEADEND GRIP SIZES | U-BOLT DIAMETER | RECOMMENDED PLATE DIMENSIONS | | | | MINIMUM PIN DIA. |
|----------------------------------|-----------------|------------------------------|--------|-------------|--------|------------------|
| | | A | B | C | D | |
| 12GA18, 916GA18, 572AWA18 | 5/8" | 1 1/16" | 1" | 1/8" x 45° | 1" | 7/8" |
| 58GA18, 642AWA18 | 3/4" | 1 1/8" | 1 1/4" | 1/8" x 45° | 1 1/8" | 7/8" |
| 34GA18, 717AWA18 | 7/8" | 1 3/8" | 1 1/2" | 1/8" x 45° | 1 1/4" | 1 1/8" |
| 78GA18, 805AWA18 | 1" | 1 5/8" | 1 1/2" | 3/16" x 45° | 1 1/4" | 1 1/8" |
| 1GA18, 905AWA18, 1010AWA18 | 1 1/8" | 1 7/8" | 1 3/4" | 1/4" x 45° | 1 5/8" | 1 3/8" |
| 1130AWA18 | 1 1/4" | 2 1/8" | 1 3/4" | 1/4" x 45° | 1 7/8" | 1 1/2" |
| 1270AWA18 | 1 3/8" | 2 1/4" | 2 7/8" | 5/16" x 45° | 2" | 1 3/4" |

For unusual applications or requirements, consult Hubbell Power Systems, Inc.

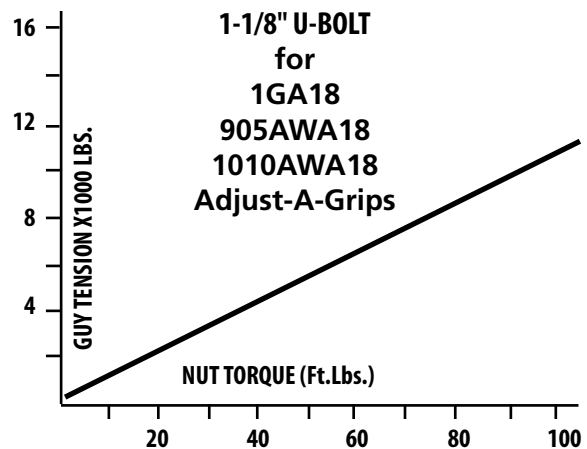
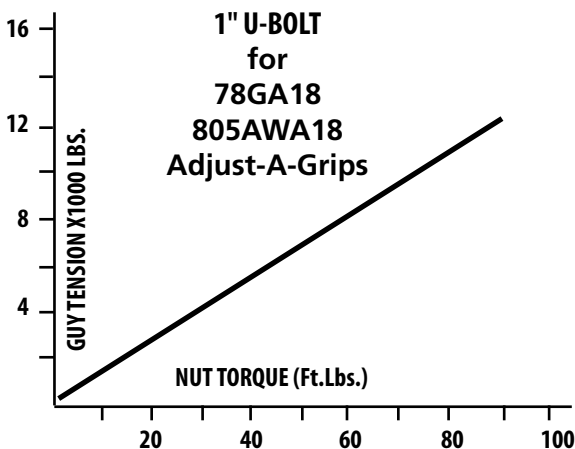
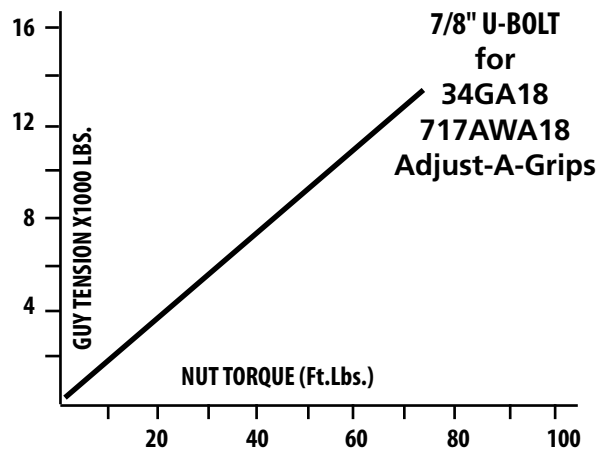
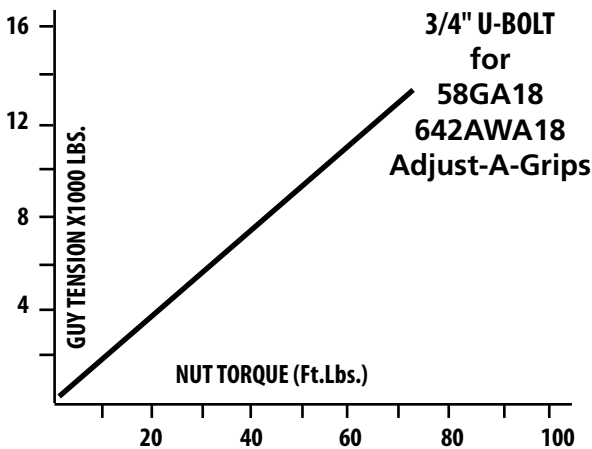
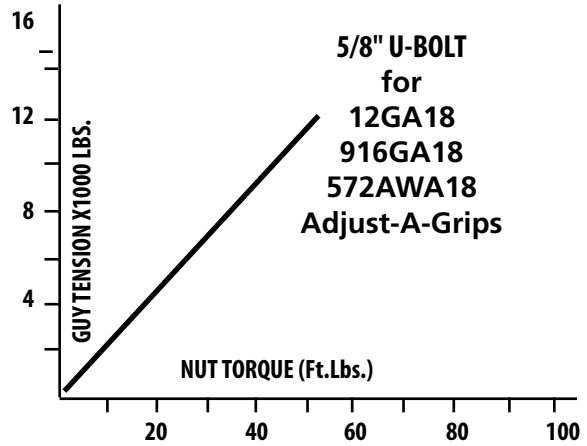
ADJUST-A-GRIP[®] DEADENDS

for structure attachment of guy strand

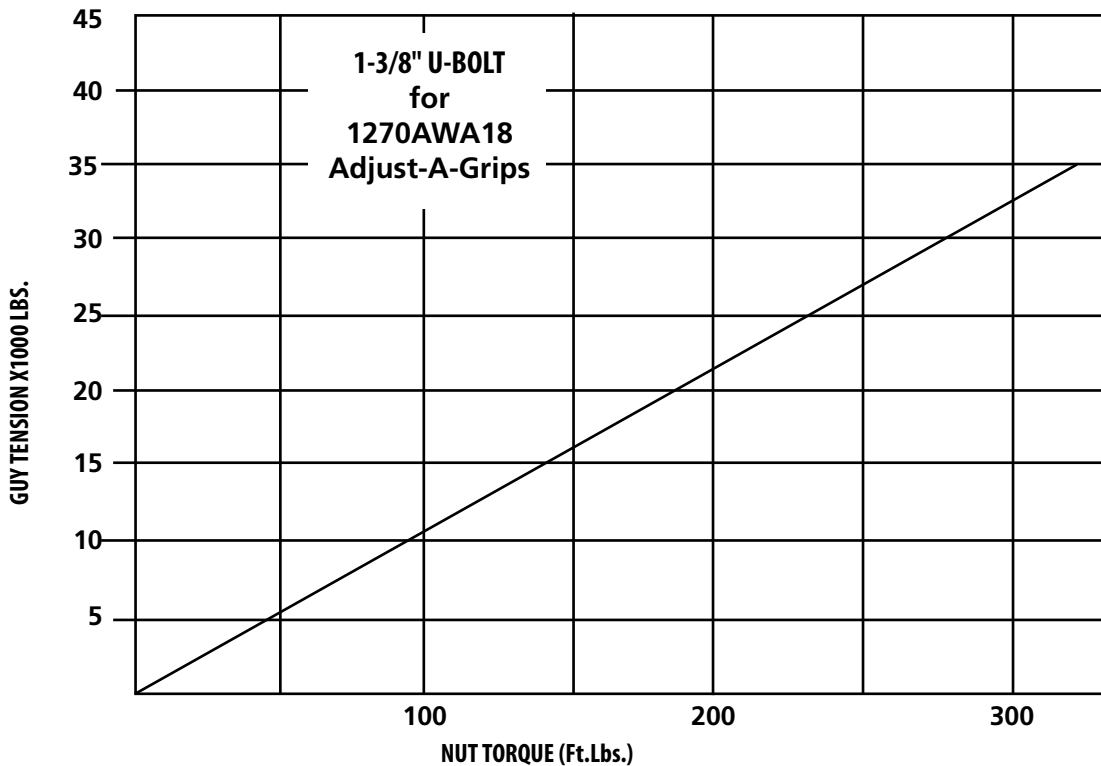
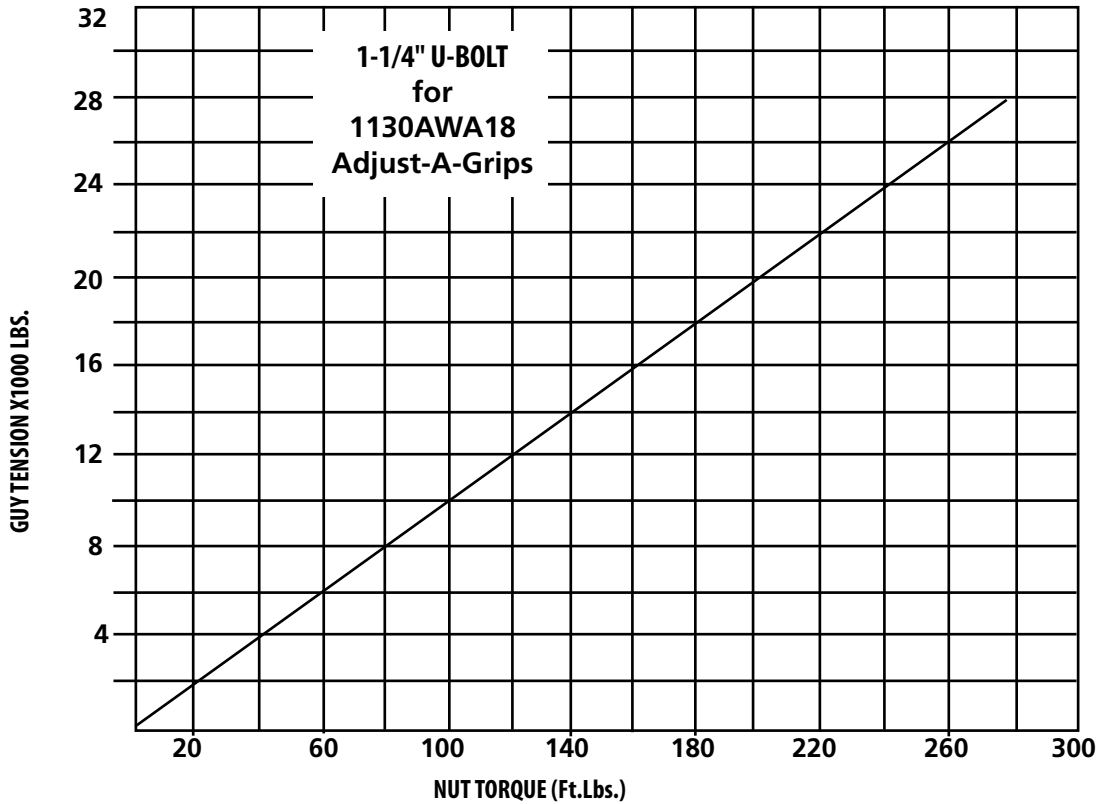
Measuring Guy Tension to Load-Nut Torque

Guy tensions may be closely approximated by measuring the torque on the U-Bolt load nuts. For accurate results, the U-Bolt thread and nut must be lubricated with an anti-seize compound, (a commercially available one is called, "Never-Seez").

To use these charts, go first to the correct bolt size chart then select the desired tension on the vertical scale and move across the chart to the intersect line, read the torque required from the horizontal scale.



ADJUST-A-GRIP[®] DEADENDS
for structure attachment of guy strand
Measuring Guy Tension to Load-Nut Torque



Guy Strand Reference Table

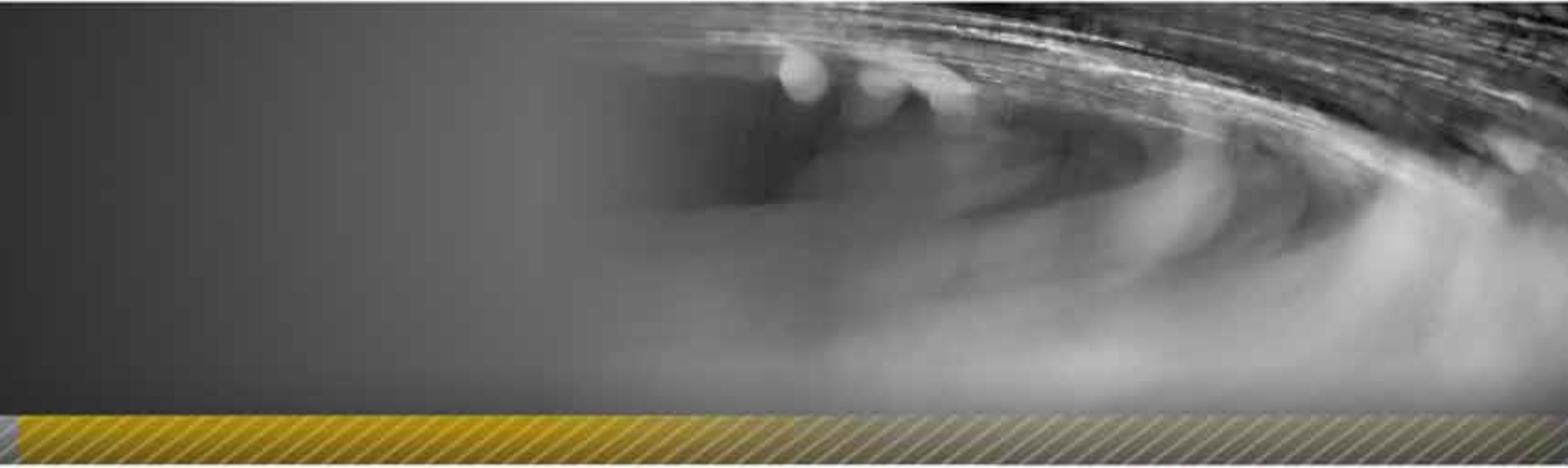


| Strand Dia. (Inches) | Galvanized Steel | | | | Copperweld [®] | Alumoweld [®] | Alumi-nized | Stain-less |
|----------------------|-------------------|-------------------|---------------------|-------------------|-------------------------|------------------------|-------------------|-------------------|
| | Siemens Martin | High Strength | Extra High Strength | Utilities Grade | | | | |
| .123 | 1/8" 7W | 1/8" 7W | 1/8" 7W | | | | | |
| .156 | 5/32" 7W | 5/32" 7W | 5/32" 7W | | | | | |
| .164 | | | | | 2.2M | | | |
| .174 | | | | | 3#12 | 3#12 | | |
| .186 | 3/16", 7W (.062") | 3/16", 7W (.062") | 3/16", 7W (.062") | | | | 3/16", 7W (.062") | |
| .195 | | | | 3/16", 7W (.065") | | | 3/16", 7W (.065") | |
| .209 | | | | | 4M | | | |
| .216 | 7/32" 7W | 7/32" 7W | 7/32" 7W | | | | 7/32" 7W | 7/32" 7W |
| .220 | | | | | 3#10 | 3#10 4M | | |
| .224 | | | | | | | 7/32" 3W | |
| .237 | | | | | 6M | | | |
| .240 | 1/4" 7W | 1/4" 7W | 1/4" 7W | | | | 1/4" 7W | |
| .242 | | | | | | 6M | | |
| .247 | | | | | 3#9 | 3#9 | | |
| .249 | | | | | | | 1/4" 7W | |
| .258 | | | | | 6M3 | | | |
| .259 | | | | 1/4" 3W | | | 1/4" 3W | 1/4" 3W |
| .272 | | | | | | 8M | | |
| .276 | | | | | | 8M | | |
| .277 | | | | | 3#8 | 3#8 | | |
| .279 | 9/32" 7W | 9/32" 7W | 9/32" 7W | 9/32" 7W | | | 9/32" 7W | 9/32" 7W |
| .303 | | | | | 10M | | | |
| .306 | | | | | 7#10 | 10M 7#10 | | |
| .311 | | | | | 3#7 | 3#7 | | |
| .312 | | | | 5/16", 3W | | | 5/16", 3W | 5/16", 3W |
| .312 | 5/16", 7W (.104") | 5/16", 7W (.104") | 5/16", 7W (.104") | | | | 5/16", 7W (.104") | 5/16", 7W (.104") |
| .327 | | | | 5/16", 7W (.109") | | | 5/16", 7W (.109") | |
| .343 | | | | | 11/32" 7#9 | 7#9 | | |
| .343 | | | | | | 12.5M | | |
| .345 | | | | | 12.5M | | | |
| .349 | | | | | 3#6 | 3#6 | | |
| .356 | | | | 3/8" 3W (.355") | | | 3/8" 3W | 3/8" 3W |
| .360 | 3/8" 7W | 3/8" 7W | 3/8" 7W | 3/8" 7W | 14M | | 3/8" 7W | 3/8" 7W |
| .363 | | | | | 14M | | | |
| .375 | | | | | | | 3/8" 19W | |
| .385 | | | | | 3/8", 7#8 | 7#8 | | |

| Strand Dia. (Inches) | Galvanized Steel | | | | Copperweld [®] | Alumoweld [®] | Alumi-nized | Stain-less |
|----------------------|------------------|---------------|---------------------|-----------------|-------------------------|------------------------|-------------|------------|
| | Siemens Martin | High Strength | Extra High Strength | Utilities Grade | | | | |
| .386 | | | | | 16M | 16M | | |
| .392 | | | | | 3#5 | 3#5 | | |
| .414 | | | | | 18M | | | |
| .417 | | | | | | 18M | | |
| .433 | | | | | 7/16", 7#7 | 7#7 | | |
| .435 | 7/16", 7W | 7/16", 7W | 7/16", 7W | 7/16", 7W | | | 7/16", 7W | 7/16", 7W |
| .438 | | | | | 20M | | | |
| .444 | | | | | | 20M | | |
| .486 | | | | | 1/2", 7#6 | 7#6 | | |
| .495 | 1/2" 7W | 1/2" 7W | 1/2" 7W | 1/2" 7W | | | 1/2" 7W | 1/2" 7W |
| .500 | 1/2" 19W | 1/2" 19W | 1/2" 19W | | | | 1/2" 19W | 1/2" 19W |
| .509 | | | | | | 19#10 | | |
| .519 | | | | | | 25M | | |
| .525 | | | | | 25M | | | |
| .546 | | | | | 9/16", 7#5 | 7#5 | | |
| .564 | 9/16" 7W | 9/16" 7W | 9/16" 7W | | | | | |
| .565 | 9/16" 19W | 9/16" 19W | 9/16" 19W | | | | | |
| .572 | | | | | 9/16" 19#9 | 19#9 | | |
| .613 | | | | | 5/8" 7#4 | 7#4 | | |
| .621 | 5/8" 7W | 5/8" 7W | 5/8" 7W | | | | | |
| .625 | 5/8" 19W | 5/8" 19W | 5/8" 19W | | | | | |
| .642 | | | | | 21/32" 19#8 | 19#8 | | |
| .713 | | | | | 37#10 | 37#10 | | |
| .721 | | | | | 23/32" 19#7 | 19#7 | | |
| .750 | 3/4" 19W | 3/4" 19W | 3/4" 19W | | | | | |
| .801 | | | | | 37#9 | 37#9 | | |
| .810 | | | | | 13/16" 19#6 | 19#6 | | |
| .885 | 7/8" 19W | 7/8" 19W | 7/8" 19W | | | | | |
| .899 | | | | | 37#8 | 37#8 | | |
| .910 | | | | | 7/8" 19#5 | 19#5 | | |
| 1.000 | 1" 19W | 1" 19W | 1" 19W | | | | | |
| 1.001 | 1" 37W | 1" 37W | 1" 37W | | | | | |
| 1.010 | | | | | 37#7 | 37#7 | | |
| 1.134 | | | | | 37#6 | 37#6 (1.13") | | |
| 1.273 | | | | | 37#5 | 37#5 (1.27") | | |

Copperweld[®] and Alumoweld[®] are registered trademarks of Copperweld Co.





HUBBELL[®]
Power Systems, Inc.

• 210 N. Allen St. • Centralia, MO 65240 • (573) 682-5521

NOTICE: For the latest revision of our Catalog and Literature, click here or visit our web site: www.hubbellpowersystems.com

NOTE: Hubbell has a policy of continuous product improvement. We reserve the right to change design and specifications without notice. ©Copyright 2012 Hubbell Incorporated

NEVER COMPROMISE™

www.hubbellpowersystems.com

