

Product End-of-Life Instructions

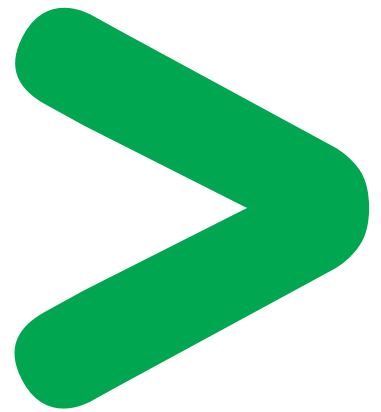
Connexium Unmanaged Switches

Product Range

Connexium Unmanaged Switches

Marketing Model

TCSESB083F2CU0, TCSESB093F2CU0, TCSESL043F23F0, TCSESM043F23F0, TCSESM063F2CS1, TCSESM063F2CU1, TCSESM083F23F1, TCSESM083F2CS0M, TCSESM083F2CU0M, TCSESM163F2CS0, TCSESU033FN0, TCSESU043F1N0, TCSESU051F0, TCSESU053FN0, TCSESU083FN0, TCSESU103F2CS0, TCSESU103F2CU0



Size in mm:

H x L x D : 138 x 35 x 121

Weight (excluding packaging) in g:

260 (without batteries)



Operations recommended for the end of life treatment

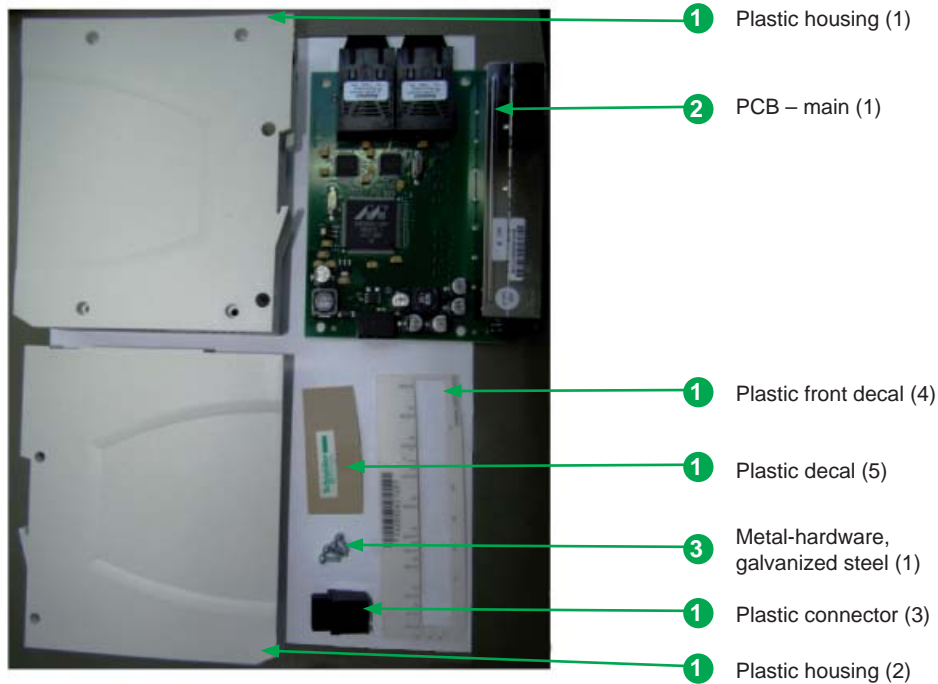
There are several steps to process the products at the end of life so as to recover components, materials or energy :

Reuse ⇒ Separation for special treatment ⇒ Other Dismantling ⇒ Shredding

The materials & components of the representative product that optimize recycling performance are listed, identified, and located hereunder. All materials and components used in this product are RoHS compliant.

There are no hazards presented by this product during the End-Of-Life treatment process.

Identification and visual location of components and materials of product:



Recommendation	Number on drawing	Components	Weight (g)	Comment
Dismantling	①	Plastic (1,2,3,4,5)	135	–
Depollution	②	PBA (1)	123	–
Metal	③	Screws (1)	2	–

Schneider Electric Industries SAS

35, rue Joseph Monier
CS30323
F - 92506 Rueil Malmaison Cedex

RCS Nanterre 954 503 439
Capital social 896 313 776 €
www.schneider-electric.com

The version of the Guide used to create the document: End of Life Instruction Drafting Guide of Schneider Electric version V3.

Publication : Schneider Electric