

CATALOG #	DESCRIPTION	CU. IN. (CM ³)	COLOR	PKG. TYPE	STD. PKG.	BARCODE
Bell 1-Gang Outlet Boxes						
PSB37550GY	Three 1/2" or 3/4" Holes 2.0" Depth	16.5 (270.4)	Gray	Shrink	8	
PSB37550WH	Three 1/2" or 3/4" Holes 2.0" Depth	16.5 (270.4)	White	Shrink	5	
Bell 2-Gang Outlet Boxes						
PDB77550GY	Seven 1/2" or 3/4" Holes 2.0" Depth	26.5 (270.4)	Gray	Shrink	6	
PDB77550WH	Seven 1/2" or 3/4" Holes 2.0" Depth	26.5 (434.3)	White	Shrink	6	
Bell Round Outlet Box						
PRB57550GY	Five 1/2" / 3/4" Holes 1.125" Depth	13.5 (221.2)	Gray	Shrink	8	
PRB57550WH	Five 1/2" / 3/4" Holes 1.125" Depth	13.5 (221.2)	White	Shrink	8	
Bell Blank Covers						
PBC100GY	Blank	—	Gray	Shrink	12	
PBC100WH	Blank	—	White	Shrink	12	
PBC200GY	Blank 2-Gang	—	Gray	Shrink	10	
PBC200WH	Blank 2-Gang	—	White	Shrink	10	
PBC300GY	Blank Round	—	Gray	Shrink	10	
PBC300WH	Blank Round	—	White	Shrink	10	
Bell 1-Gang Toggle Switch Covers						
PTC100GY	Toggle	—	Gray	Shrink	8	
PTC100WH	Toggle	—	White	Shrink	8	
Bell 2-Gang Toggle Switch/Device Covers						
PTC200GY	Toggle/Toggle	—	Gray	Shrink	4	
PTC521GY	Toggle/GFCI	—	Gray	Shrink	4	
PTC521WH	Toggle/GFCI	—	White	Shrink	4	
Bell Lampholders						
PLTS100GY	Swivel Lampholder	—	Gray	Shrink	12	
PLTS100WH	Swivel Lampholder	—	White	Shrink	12	
Bell Lampholder Covers						
PLV330GY	Three 1/2" Holes	—	Gray	Shrink	8	
PLV330WH	Three 1/2" Holes	—	White	Shrink	8	
Bell Closure Plug Assortment (Pack of 4)						
PCP47550GY	Two 1/2", Two 3/4"	—	Gray	Poly Bag	30	
PCP47550WH	Two 1/2", Two 3/4"	—	White	Poly Bag	30	
CATALOG #	DESCRIPTION	DEPTH	COLOR	PKG. TYPE	STD. PKG.	BARCODE
Taymac 1-Gang Flat Covers						
MM110C	Horizontal/Vertical 16-in-1	.625"	Clear	Shrink	10	
MM110G	Horizontal/Vertical 16-in-1	.625"	Gray	Shrink	10	
MM110W	Horizontal/Vertical 16-in-1	.625"	White	Shrink	10	
Taymac 2-Gang Flat Covers						
MM1410C	55-in-1	.625"	Clear	Shrink	10	
MM1410G	55-in-1	.625"	Gray	Shrink	10	
MM1410W	55-in-1	.625"	White	Shrink	10	



Non-Metallic Weatherproof Boxes, Covers and Lighting

TayMac/Bell
Tempe, AZ 85281
480-921-7552

www.hubbell.com/taymac/en
www.hubbell.com/bell/en



TM-010 rev1



©2018 Hubbell. All rights reserved. Information subject to change. Trademarks are property of their respective owners.

Commercial, Industrial and Residential Electrical Products

Flat Covers

APPLICATIONS

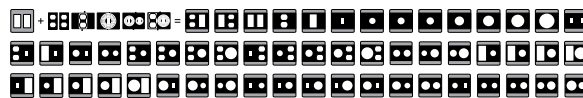
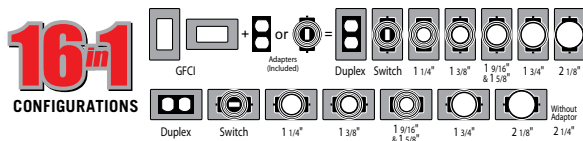
- For use whenever weatherproof protection is required for an outdoor receptacle or switch.

PRODUCT FEATURES

- High-impact polycarbonate construction provides maximum durability
- Patented Quick-Fit™ keyhole mounting system allows installation in under a minute
- Includes attached gasket and mounting hardware
- Base configuration with patented Knock-Out technology for custom fitting
- Lockable tab (1/8" shackle)
- Made in USA

COMPLIANCES

- File E116141
- 2014 NEC® compliant (article 406.9)
- NEMA 3R rated



Multiple combinations of duplex, GFCI, switch, and rounds: 1-1/4", 1-3/8", 1-5/8", 1-11/16", 1-3/4", 2-1/8", 2-1/4", 2-7/16"

Boxes

APPLICATIONS

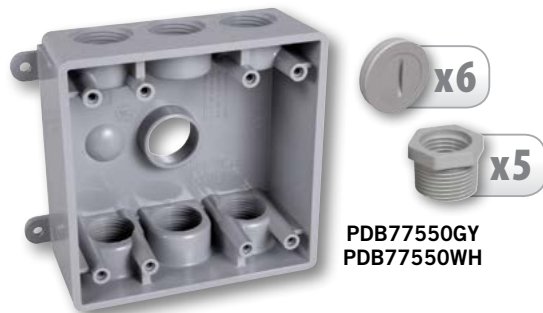
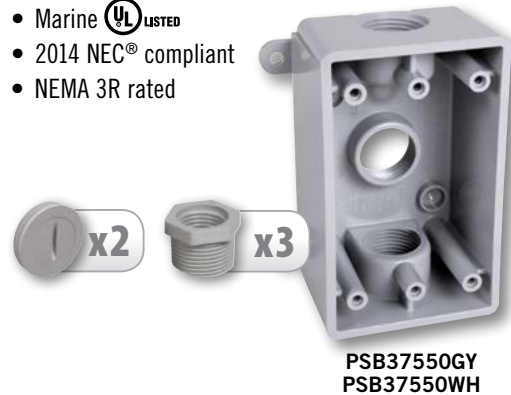
- For general use whenever weatherproof protection is required.

PRODUCT FEATURES

- Durable high impact PVC construction
- Can be used for 1/2" and 3/4" conduit
- Includes 3/4" closure plugs and reducer bushings

COMPLIANCES

- Marine LISTED
- 2014 NEC® compliant
- NEMA 3R rated



Blank Covers

APPLICATIONS

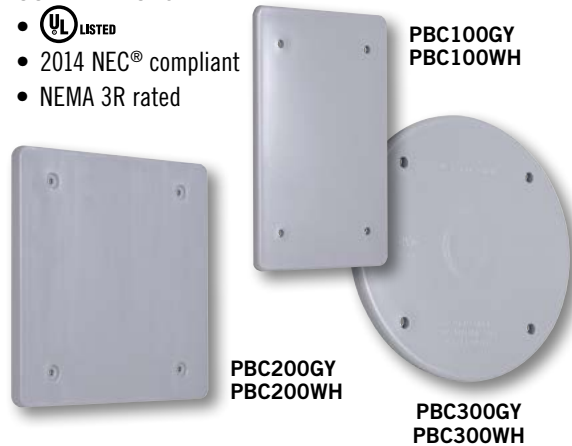
- For general use whenever weatherproof protection is required.

PRODUCT FEATURES

- Durable high impact polycarbonate construction
- Includes attached gasket and mounting hardware

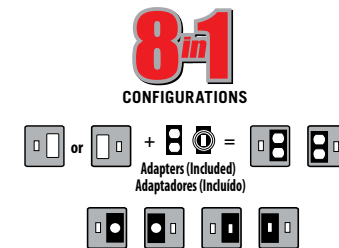
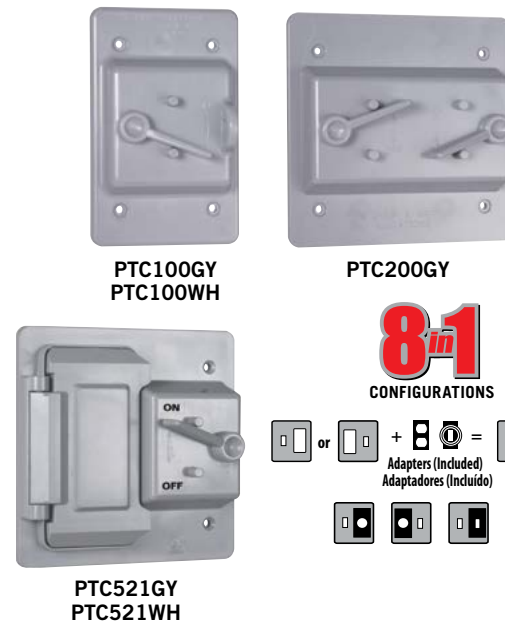
COMPLIANCES

- LISTED
- 2014 NEC® compliant
- NEMA 3R rated



Toggle/Device Covers

Patented Horseshoe Adapter Ensures a Snug Fit for Small and Large Head Switches



Lampholders and Accessories

APPLICATIONS

- For general outdoor lighting use in wet, damp or dry locations.

PRODUCT FEATURES

- Durable high impact PBT construction
- Includes attached gasket and mounting hardware

COMPLIANCES

- LISTED
- 2014 NEC® compliant
- NEMA 3R rated

