



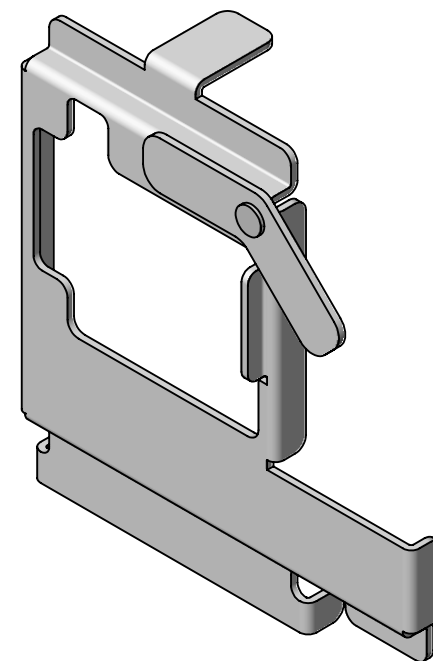
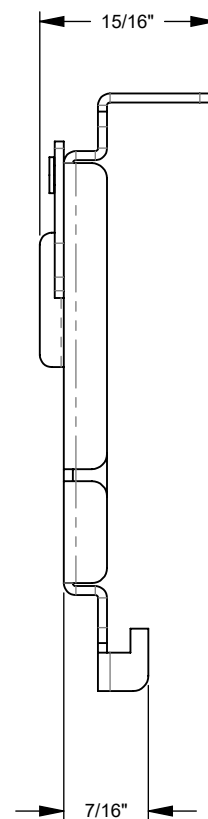
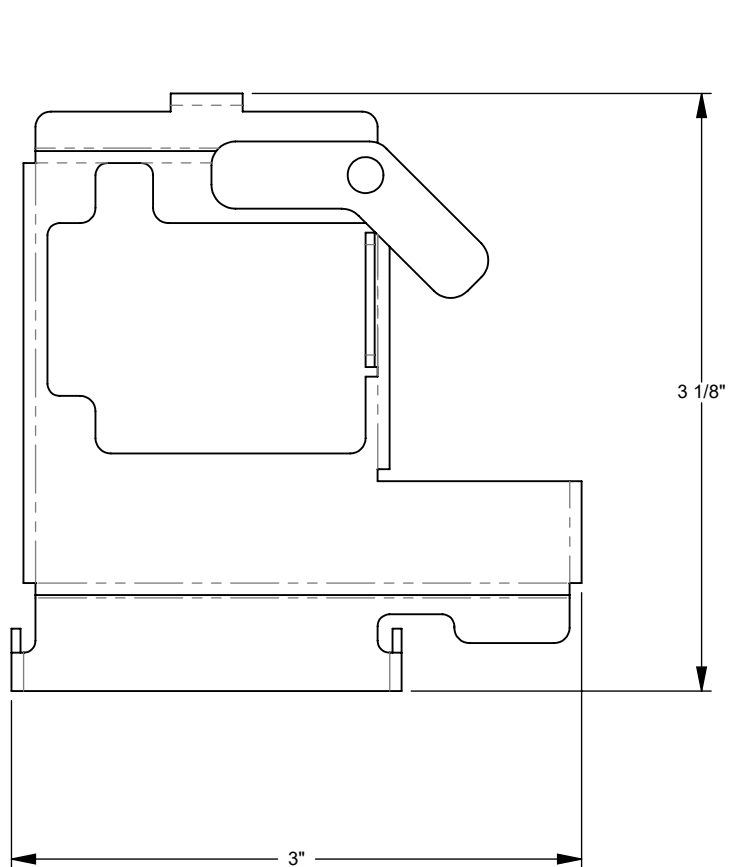
MILBANK
ENERGY AT WORK

K5830



Catalog Number	K5830
Marketing Product Description	Breaker Interlock Kit Q Frame To Q Frame
UPC	784572487963
Length (IN)	1
Width (IN)	8
Height (IN)	10
Weight (LB)	1
Brand Name	Milbank
Type	Temporary Bypass
Application	Metering Accessory
Material	Steel
Size	1L x 8W x 10H
Color	Unpainted
Insulation	None
Knockouts	False
Misc	Instruction Sheet

Please consult serving utility for their requirements prior to ordering or installing, as specifications and approvals vary by utility and may require local electrical inspector approval. All installations must be installed by a licensed electrician and must comply with all national and local codes, laws and regulations. Milbank reserves the right to make changes in specifications and features shown without notice or obligation.



MILBANK
ENERGY AT WORK

Version:

1

**All dimensions are +/- 1/16".
Drawing views are not to scale.**

Please consult serving utility for their requirements prior to ordering or installing, as specifications and approvals vary by utility, and may require local electrical inspector approval. All installations must be installed by a licensed electrician and must comply with all national and local codes, laws and regulations. Milbank reserves the right to make changes in specifications and features shown without notice or obligation.