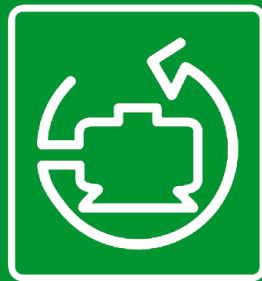


# SoMove V2.0

## Installation Notes

IE01 EN





## Target of the document

Evolve from **SoMove Lite 1.x** to **SoMove 2.x** assures more flexibility for updates, and allows a configuration for the Altivar Process ATV6xx range.

This document gives detailed explanations for :

- > Improvements of SoMove 2.x compared to 1.x
- > Installation of SoMove V2.0,
- > Installation of the TCSMCNAM3M002P cable on Windows 7 and Windows 8.

## Content

- 1) SoMove 2.0 innovation
- 2) How to install SoMove to V2.0 version
- 3) TCSMCNAM3M002P Cable installation on Windows 7 and Windows 8 (x32 / x64)



## 1. SoMove 2.0 Innovation

The major innovation of SoMove V2.0 consists in the dissociation of the executable common part (FDT) on all devices and a product specific data base for each product (DTM) and which describes totally the devices (ATV, ATS, Lexium, TESYS U, TESYS T).

Simplified updates, as in former versions, the complete package had to be downloaded, even for minor software modifications only.

With V2.0 version, updates will be dissociated:

- > update of the executable only to evolve from V2.0 version to an advanced version
- > add on a single DTM when a new device is commercialized (this is the case for the asynchronous Altivar Process ATV6xx).

In order to facilitate the download of the DTMs on the work station of the technician, Schneider has created libraries, regrouping devices. All Altivar devices are in one Altivar DTM Library, therefore, there will be only one download for all Altivars instead of scaled installation of ATV12, ATV312, ATV32, ATV61, ATV71, ATV212, ATV600, etc.



## 2. How to install SoMove V2.0

In order to configure or connect to a device, the corresponding DTM library **MUST** be downloaded and installed on the computer, as well as SoMove FDT.

SoMove V2.0 software and DTM libraries are available on the below link:

<http://www.schneider-electric.com/products/ww/en/5100-software/5105-configuration-software/2714-somove/>

Title	Reference	Date	Size	
AltivarProcess ATV6xx DTM Library V1.0.20	AltivarProcess_ATV6xx_D	2014-09-02	33.4 MB	
<b>SoMove V2.0 (FDT Standalone)</b>	<b>SoMove_FDT</b>	2014-09-02	163.1 MB	
Catalog: SoMove setup software	DIA2ED2140801EN	2014-06-30	1.3 MB	
Catalogue : logiciel de mise en service SoMove	DIA2ED2140801FR	2014-06-30	1.3 MB	
Altistart DTM Library V10.0.0 (ATS22, ATS48)	Altistart_DTM_Library	2014-06-18	104.2 MB	
Lexium DTM Library V10.0.2= LXM32A + LXM32C +	Lexium_DTM_Library	2014-06-18	302.4 MB	
Altivar DTM Library V10.0.1: ATV12, ATV31/312, AT	Altivar_DTM_Library	2014-06-18	653.7 MB	
Motion Control Lexium 32 - Catalogue June 2014	DIA7ED2140501EN	2014-06-09	5.5 MB	
Commande de mouvement Lexium 32 - catalogue ju	DIA7ED2140501FR	2014-05-23	5.5 MB	
Cybersecurity Vulnerability - Modbus Serial Driver	SEVD 2013-070-01	2014-04-03	208.8 KB	
TeSys DTM Library v2.7.5.0	TeSys DTM Library v2.7.5	2013-12-18	98.5 MB	
TCSMCNAM3M002P USB to RS485 converter, Instr	BBV28000	2009-05-01	517.3 KB	

12 Results: 1 - 12 of 12 for SoMove

### 2.1 You have a previous SoMove version on your computer ?

Before proceeding, make sure existing SoMove configurations/projects (\*.psx) are backed-up!

- > Uninstall completely previous SoMove version from your device.
- > Go to step 2.2



## 2.2 SoMove V2.0 installation

- > Download the software (FDT) SoMove V2.0 (FDT Standalone).
  
- > Download the DTM libraries of your choice corresponding to the devices to configure:
  - Altivar Process ATV6xx library
  - Altivar DTM library
  - Altistart DTM library
  - Lexium DTM library
  - TeSys DTM library
  
- > **Unplug** any kind of USB adaptor from your PC (ex.:TCSMCNAM3M002P) before you start SoMove installation.  
The cable driver is installed automatically during the SoMove software installation.
  
- > Install **SoMove V2.0** FDT.
  
- > Install the DTM libraries.

*(Oops, trouble? Please contact Customer Care Centre)*



### 3. TCSMCNAM3M002P Cable Installation on Windows 7 and 8 (x32/x64)

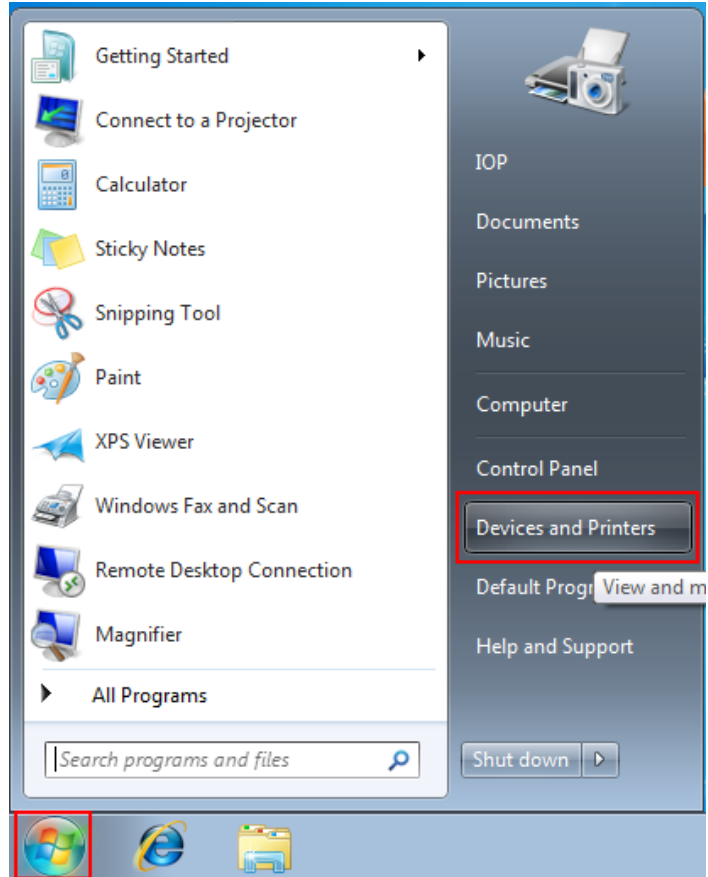


By default, Windows 7 and 8 automatically installs drivers for the devices that are connected to the computer.

When TCSMCNAM3M002P Cable is connected for the first time, it takes more than 5 minutes to install the drivers and create the virtual USB ports.

To improve the installation and creation time of the virtual COM port, please apply the following instructions:

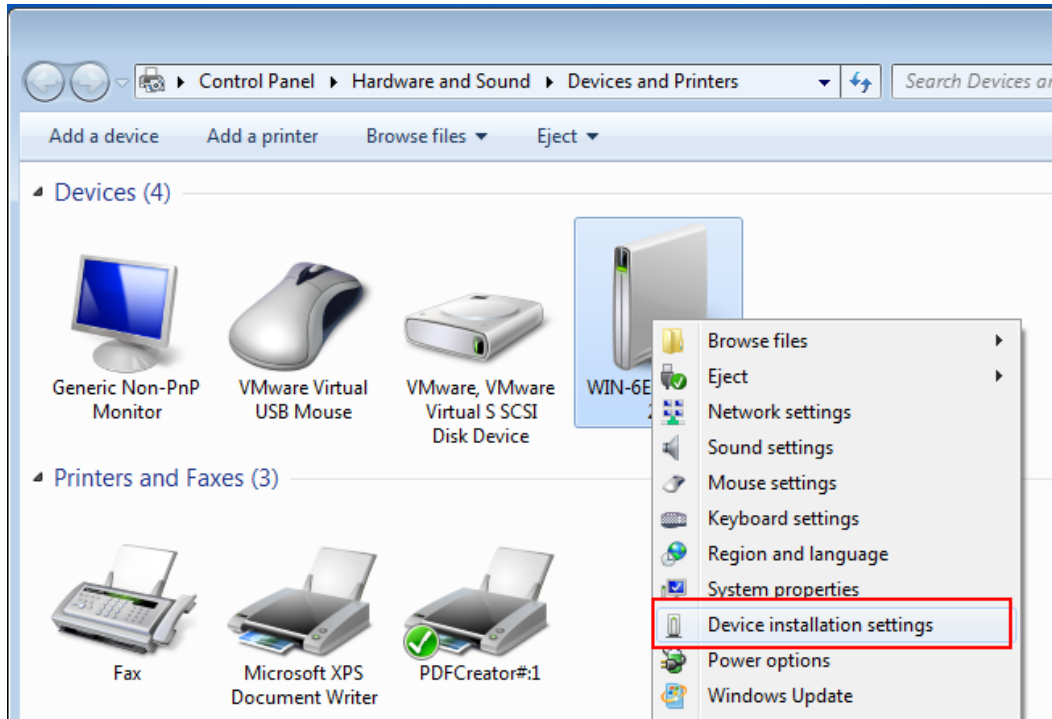
1. Do not connect the cable in the USB port of the PC before installation of the SoMove software is finished. Cable driver is installed automatically during the SoMove software installation.
2. Launch the SoMove software installation.
3. Click Start, Click Devices and Printers from the Start menu.





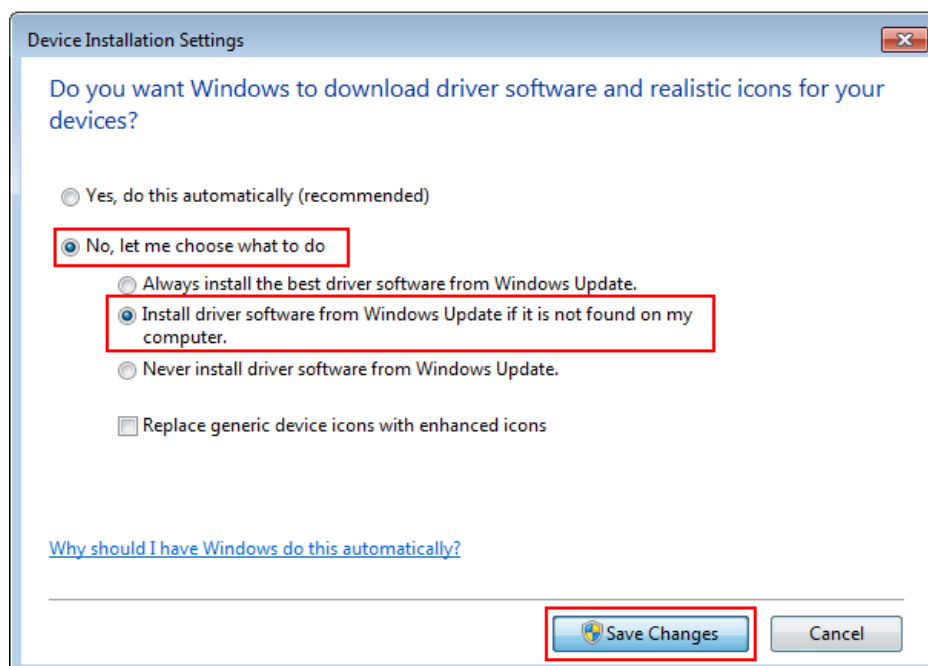
- All the devices connected to the computer are listed, including monitor, keyboard, mouse, printer, and so on.

Under Devices, right-click the icon for the computer, and then click Device installation settings.



- A new window pops up asking you whether you want Windows to download driver software.

Click to select No, let me choose what to do, select Install driver software from Windows Update if it is not found on my computer. and then click Save Changes.





6. Click Yes when you are prompted for confirmation
7. Once the SoMove software installation is complete, connect the TCSMCNAM3M002P Cable to the USB port of the PC. Check the COM Port created in the Device Manager

Click Start, type Device Manager in the search box, and then click the Device Manager.

Device Manager lists all the device's installed on the PC.

Check in the Ports (COM & LT) section to identify the created virtual COM Port [ TSX C USB 485 (COMxx) In following screen shot the COM number is 10 as an example but it can be any other number.

