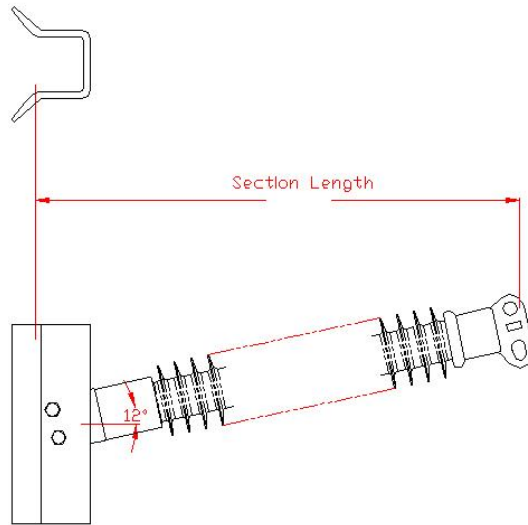


P250038S0020

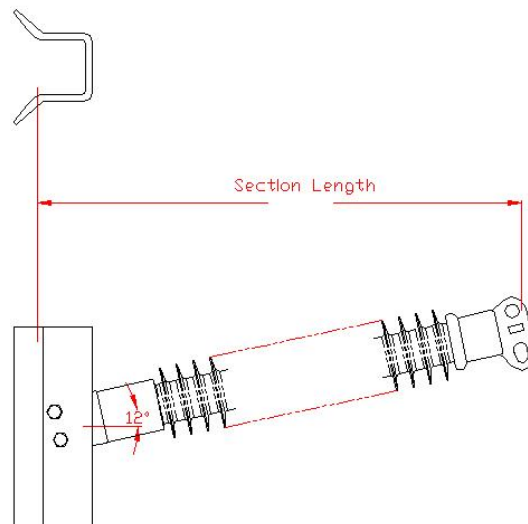


Product Specifications

Typical System Voltage	138kV / 161kV
Rod Diameter	2.5 IN, 2.5"
Top/Ground End Fitting	Tear Drop Blade
Bottom/Line End Fitting	Aluminum Gain 12" (305mm) CL mounting
Section Length	51.1 IN (1298 MM)
Leakage Distance	101 IN (2565 MM)
Corona Ring	None
Polymer Length	38.91 IN
System Voltage (kV)	138kV
Dry Arc Distance	39.5 IN (1003 MM)
Number of Sheds	32
Shed Style	Uniform
Shed Diameter	5.06"
SCL	3550 LB
RCL	1775 LB
Thickness of housing over Rod	> 3MM
ANSI 60Hz Dry FO	410
ANSI 60Hz Wet FO	370
IEC lightning Impulse Withstand - Positive	615
IEC lightning Impulse Withstand - Negative	730

Compressed Product Number

P250038S0020





[Warranty Info](#) | [Trademarks](#) | [Terms of Use](#)

All contents Copyright © 2007 Hubbell Power Systems, Inc. All rights reserved.

NOTE: Because Hubbell has a policy of continuous product improvement, we reserve the right to change design and specifications without notice.