



# HAZARDOUS AREAMASTER™ GENERATION 2 HL LED

- Three lumen outputs provide up to 38,000 lumens.
- Choice of optics for optimal light distribution in a variety of applications.
- Separate field wiring compartment with screw terminal block for easy and secure connection (can accept UL/CSA 26-10AWG).
- Two ¾" NPT entries provided.
- Yoke bracket is designed to accommodate traditional Areamaster brackets and slipfitters for easy retrofit.
- Choice of color temperature (CCT); 5000K cool white or 3000K warm white.
- Rugged and compact housing with superior thermal design translates to long luminaire life.
- Heavy duty, high temperature silicone rubber gaskets.
- Thermal shock and impact resistant clear or frosted glass lens.
- Standard 6KV surge protection.
- Captive fasteners secure one piece lens.
- Field replaceable LED driver and lens cover.

## OPTIONS

- Improved safety cable design with multiple retention points, purchase separately
- Guard and visor available, purchase separately
- Slip-fitters and mounting brackets available for easy pole or wall mounting
- 10KV Surge Protection

## SUITABLE LOCATIONS

- Enclosed and gasketed fixtures suitable for use in:
  - A wide range of industrial, chemical processing and other areas where flammable gases and vapors are present, for example
  - Oil and Gas Refineries
  - Petrochemical Plants
  - Foundries
  - Drilling Rigs
  - Pulp and Paper Mills
  - Food and Beverage Processing Facilities
  - Loading Docks
  - Power Plants
  - Water and Wastewater Treatment Facilities
  - Other areas where corrosive, wet, dirty and tough environments are a problem
- IP66/IP67, Type 4X, marine and wet locations
- Locations requiring dependable, consistent lighting in extreme hot/cold temperature environments. -40 °C to +65 °C (-40 °F to +149 °F) ambient temperature range

## STANDARD MATERIALS

- Housing and lens door: copperfree (4/10 of 1% max.) aluminum
- Gaskets: silicone rubber
- Yoke: zinc plated HR steel
- Bolts: stainless steel

- Close up plugs: (1) aluminum provided
- Guard and safety cable: stainless steel
- Visor: Aluminum

## STANDARD FINISHES

- Housing, lens cover and yoke mount: architectural bronze polyester

## NEC/CEC RATINGS

- Class I, Division 2, Groups A, B, C, D
- Class I, Zone 2 Group IIC
- Class II, Division 1 and 2, Groups E, F, G
- Class III
- Zone 20 and 21 Group IIIC
- Zone 22, Group IIIB
- Simultaneous Exposure
- Marine Outside Type (Salt Water) for USA ONLY
- Wet Locations
- Type 3R, 4, 4X, IP66/67
- cCSAus: 164460 Certificate Number: 70073613

## RELATED PRODUCTS

- Round Tapered Steel Poles
- Hinged Steel Poled
- Square Tapered Steel Poles
- Square Steel Poles
- Floodlight Mounting Brackets

## DESIGNLIGHTS™ CONSORTIUM

- All models

## Product Ordering Guide | Areamaster Generation 2 HL LED

**AMLH**  
|  
**Series:**  
**AMLH**  
Areamaster 2  
LED

**L2**  
|  
**Lumen Level:**  
**L1** - 24K  
**L2** - 30K  
**L3** - 38K

**C**  
|  
**Color Temp CCT:**  
**C** - 5000K  
**W** - 3000K

**G**  
|  
**Diffusion:**  
**G** - Clear Glass  
**F** - Frosted Glass

**7**  
|  
**Beam Spread:**  
**5** - 5x5  
**6** - 7x7 (non-optic)  
**7** - 7x6

**BU**  
|  
**Voltage:**  
**BU** - 120-277 Vac 50/60 Hz,  
170-300 Vdc  
**BH** - 347-480 Vac 50/60 Hz

**S**  
|  
**Options:**  
**F** - Fusing  
**S** - 10 KV Surge Protection





For product information:  
[www.appletonelec.com](http://www.appletonelec.com)  
1.800.621.1506

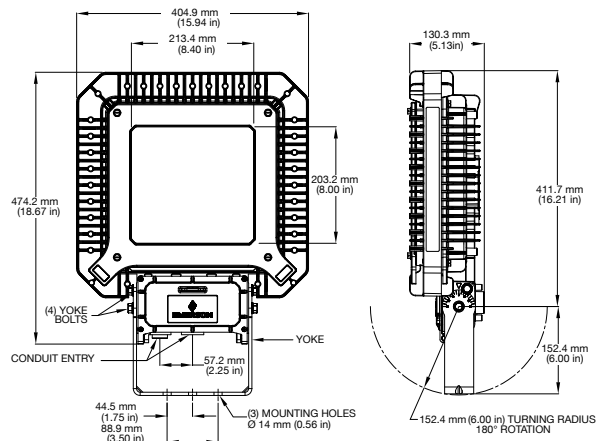


EMERSON. CONSIDER IT SOLVED.™

|  |     | AMLHL1  | AMLHL2                                 | AMLHL3                                 |
|--|-----|---|--|--|
| Equivalent to HPS/PSMH                       |     | 1000 Watt   | 1000-1500 Watt                         | 1500 Watt                              |
| Input Power                                  |     | 180 Watt  | 225 Watt                               | 310 Watt                               |
| Voltage Range                                | BU  | 120-277 Vac, 50/60 Hz,<br>170-300 Vdc   | 120-277Vac, 50/60 Hz,<br>170-300 Vdc   | 120-277Vac, 50/60 Hz,<br>170-300 Vdc   |
|  | BH  | 347-480 Vac, 50/60 Hz   | 347-480 Vac, 50/60 Hz                  | 347-480 Vac, 50/60 Hz                  |
| Luminous Flux (Efficacy)*<br>for 5000K Clear | 7x7 | 23,500 (131)  | 30,100 (134)                           | 37,000 (119)                           |
|  | 7x6 | 22,700 (126)  | 28,100(125)                            | 35,400(114)                            |
|  | 5x5 | 24,100 (134)  | 30,000 (133)                           | 38,300 (124)                           |
| Correlated Color Temperature (CCT)           |     | 3000K/5000K   | 3000K/5000K                            | 3000K/5000K                            |
| Color Rendering Index (CRI)                  |     | 80/70   | 80/70                                  | 80/70                                  |
| Ambient Temperature (NEC/CEC)                |     | -40 °C (-40 °F)<br>to +65 °C (+149 °F)  | -40 °C (-40 °F)<br>to +65 °C (+149 °F) | -40 °C (-40 °F)<br>to +55 °C (+131 °F) |
| T Rating (NEC/CEC)                           |     | T4 @ +65°C (+149°F)   | T3C @ +65 °C (+149 °F)                 | T3C @ +55 °C (+131 °F)                 |
| Luminaire Weight                             |     | 16.1 kg (35.4 lb)   | 16.1 kg (35.4 lb)                      | 16.1 kg (35.4 lb)                      |
| Standard Materials                           |     | Housing: copperfree aluminum  |  |  |
|  |     | Finish: architectural bronze polyester  |  |  |
|  |     | Lens: thermal shock- and impact-resistant glass or optional frosted glass             |  |  |
|  |     | >100,000 hours @ +40 °C (+104 °F) ambient temperature                                 |  |  |
| Lifetime                                     |     | >60,000 hours @ +65°C (+149 °F) ambient temperature                                   |  |  |
| Warranty                                     |     | 5 years standard; 10 years for models with secondary optic and extra surge protection |  |  |

① All values typical +/-10%

| Luminaire Category                | Image   | Effective Projected Area (EPA) = FPA * DC ft² |
|-----------------------------------|---|---|
| 90° to Ground-Worst Case Mounting |   | 2.45  |
| 45° to Ground-Standard Mounting   |  | 1.73  |



## Photometric Data

