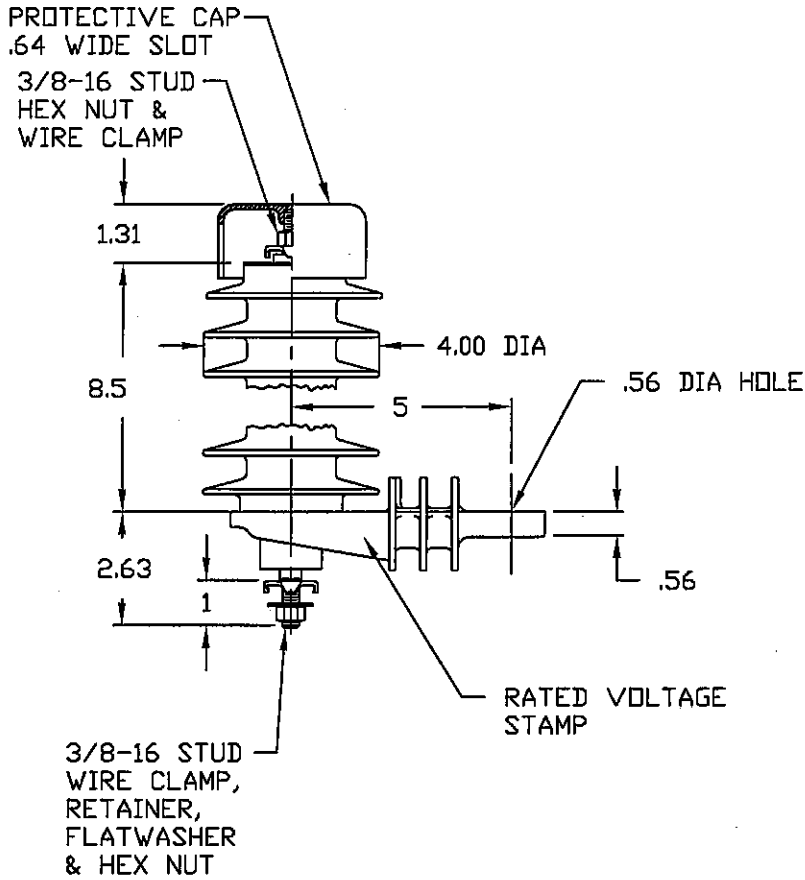


NOTES:

1. DIMENSIONS SUBJECT TO +/- 3% TOLERANCE
2. LEAKAGE DISTANCE (Inches) - 26.0
3. ALTITUDE 0-12000 FT. ABOVE SEA LEVEL
4. WEIGHT OF UNIT INCLUDING HARDWARE - 5.9 LB.
5. MAXIMUM CONTINUOUS LINE-TO-GROUND OPERATING VOLTAGE 17 kV MCOV
6. DUTY CYCLE VOLTAGE RATING 21 kV RMS.
7. PVR RISER LABEL ON UNDERSIDE OF INSULATING BASE, OR ARRESTER



.5 μ SEC 10kA IR KV	500 A SWITCHING SURGE IR KV	MAXIMUM 8/20 DISCHARGE VOLTAGE - KV AT					
		1.5 kA	3.0 kA	5 kA	10 kA	20 kA	40 kA
60.7	40.3	44.3	47.6	50.3	55.6	63.8	75.3

RISER POLE SURGE ARRESTER							
	CONFIDENTIAL: THIS DRAWING AND ITS CONTENTS ARE CONFIDENTIAL AND THE EXCLUSIVE PROPERTY OF HUBBELL POWER SYSTEMS. NO PUBLICATION, DISTRIBUTION OR COPIES MAY BE MADE WITHOUT THE WRITTEN CONSENT OF HUBBELL POWER SYSTEMS. HUBBELL POWER SYSTEMS UNPUBLISHED ALL RIGHTS RESERVED UNDER THE COPYRIGHT LAWS.	TITLE PVR ARRESTER 17 KV MCOV					
		SIZE	DWG NO.	CAT / PART / ASSY NO.			REV
		S	ALES7XXX	221617-7314			7
REV DATE 10/24/07	DO NOT SCALE THIS DRAWING	DRN BY ENG105	DATE 06/17/00	SHEET 1 OF 1			