

FEATURES & SPECIFICATIONS

INTENDED USE — Intended for low to medium mounting heights where dust, dirt, humidity, moisture, cold ambient spaces or corrosive elements are present. Ideal for canopies, dock areas, wastewater treatment, refrigerated areas, food processing and other non-hazardous environments. **Certain airborne contaminants can diminish integrity of acrylic.** [Click here for Acrylic Environmental Compatibility table for suitable uses.](#)

CONSTRUCTION — Housing formed from impact resistant, UV stabilized, fiberglass reinforced polyester with cold-rolled steel enclosed wireway. Poured in gasketing provides a seal between housing and diffuser. Captive, corrosion-resistant cam-action latches secure the diffuser; six on 4' units, and ten on 8' units. Stainless steel latches available.

Finish: Painted parts pretreated with a five-stage iron-phosphate process to ensure superior paint adhesion and corrosion resistance, then finished with a high-gloss, baked white enamel.

OPTICS — High-impact Acrylic diffuser with a stippled interior surface to spread lamp image.

ELECTRICAL — Thermally protected, resetting, Class P, HPF, non-PCB, UL Listed and CSA Certified ballast is standard. Starts instantly down to -20°F (-29°C).

AWM, TFN, THHN wire throughout, rated for required temperatures.

INSTALLATION — For unit or row installations, surface (ceiling or wall) or suspended mounting. Wall mounting; horizontal orientation only for use in damp locations.

LISTINGS — 120V, 277V and MVOLT are UL Listed and CSA Certified (standard). 347V is CSA Certified (see Options). NOM Certified (see Options). Listed for 25°C ambient and wet locations for covered-ceiling applications. IP65 rated. Optional IP67 rating available. Compliance to FDA/USDA requirements and/or NSF splash-zone certification.

WARRANTY — 1-year limited warranty. Complete warranty terms located at www.acuitybrands.com/CustomResources/Terms_and_conditions.aspx

Actual performance may differ as a result of end-user environment and application.

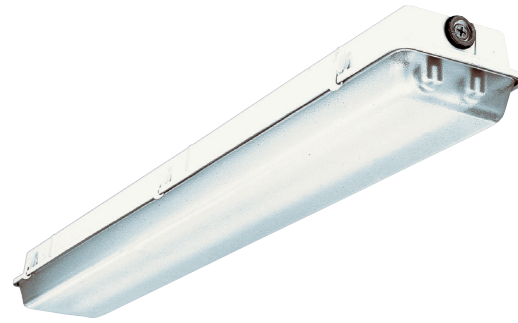
Note: Specifications subject to change without notice.

Catalog Number
Notes
Type

Enclosed and Gasketed Industrial

DMW

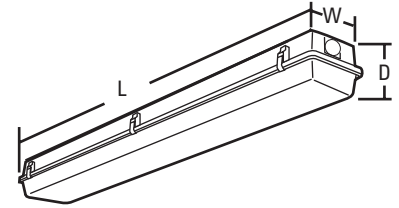
HIGH OUTPUT
4' or 8' length
1 or 2 lamps



Specifications

Length:	50 (127.0) 98 (248.9)
Width:	8-1/8 (20.6)
Fixture depth:	5-5/8 (14.3)

All dimensions are shown in inches (centimeters) unless otherwise noted.



ORDERING INFORMATION

Lead times will vary depending on options selected. Consult with your sales representative.

Example: DMW 2 96T8HO MVOLT GEB10PS

Series	Number of lamps	Lamp type	Diffuser	Voltage	Ballast	Options
DMW Wet location	1	96T8HO 86W T8	(blank)	120	GEB10IS T8 Electronic ballast, ≤10% THD, instant start	EL6DW Emergency battery pack (nominal 600 lumens) ²
	2	380mA (96")	3" Deep high-impact acrylic (50% DR)	277		EL14DW Emergency battery pack (nominal 1400 lumens) ²
For tandem double-length unit, add prefix T. Example: TDMW ¹	Not included.	48T8HO 44W T8HO (48")		347	GEB10PS T8 electronic ballasts, ≤10% THD, programmed start	GLR Internal fast-blow fusing ³
				MVOLT others available		GMF Internal slow-blow fusing ³
						RIF1 Radio interference filter, one per fixture
						STSL Stainless steel latches
						WLF Wet location fittings (one pair; installed, top)
						IP67 IP67 rated ⁴
						CSA CSA certified (only required for 347V)
						NOM NOM certified
						CS89 6' white cord, 16/3, no plug, wet location
						CS88 6' Brad Harrison 16/3 cord and straight blade plug set ³
						MSL_ Wet location occupancy sensor pre-wired ^{3,5}

Accessories: Order as separate catalog number.	
BCD	Bracket for hanger chain mounting. Two per package ⁶
HC36	Chain hangers (1 pair, 36" long); Requires BCD
WLF	Wet location fittings (1 pair, not installed)
DMW/VRISMB	Surface mounting brackets (pair) ⁷

Notes

- Available with 48T8HO only.
- Not compatible with 48T8HO. Must specify voltage; 120 or 277 only.
- Must specify voltage. Not available with MVOLT.
- 4' fixture requires 8 latches. 8' fixture requires 14 latches.
- For mounting up to 8' specify MS18; for mounting up to 20' specify MS120.
- For stainless steel, specify STS (ex: BCD STS).
- Brackets ship standard with fixture. For replacement purposes only.

DMW High Output

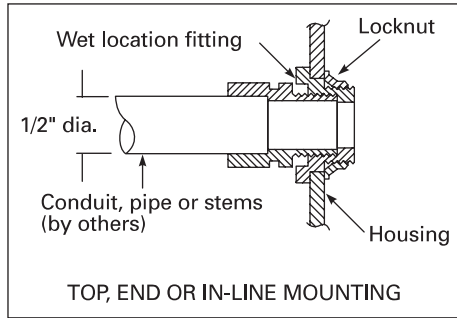
MOUNTING DATA

For unit or row installation, surface (ceiling or wall) or suspended mounting.

DMW — Drill holes through housing and channel at appropriate locations. Includes gasketed wet location fittings on ends for power feeding/mounting. Fitting is threaded for 1/2" rigid conduit (optional WLF for top mounting). Attach to surface using fasteners and sealing washers (by others) appropriate to ceiling materials.

Unit installation — Minimum of two hangers required.

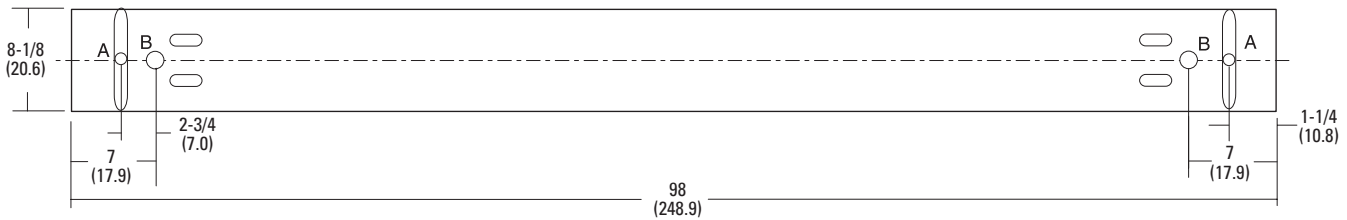
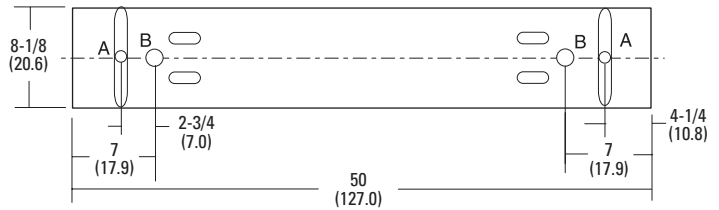
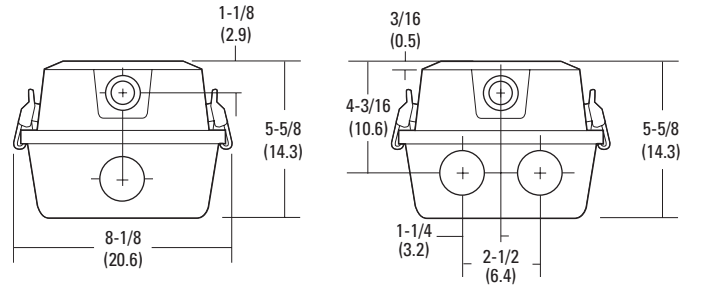
Row installation — Minimum of two hangers required. Recommended 1/2" nipple with union (by others) for DMW.



A = 11/16 (17) Dia.
 B = 1-1/8 (29) Dia.
 Recommended mounting locations
 (field drilling required)

DIMENSIONS

Inches (centimeters). Subject to change without notice.



PHOTOMETRICS

Calculated using the zonal cavity method in accordance with IESNA LM41 procedure. Floor reflectances are 20%. Lamp configurations shown are typical. Full photometric data on these and other configurations available upon request.

Energy (Calculated in accordance with NEMA standard LE-5)					
LER.FW	ANNUAL ENERGY COST*	LAMP DESCRIPTION	LAMP LUMENS	BALLAST FACTOR	WATTS
33.1	\$7.23	(2) F96T12HO	7084	.84	235
35.1	\$6.83	(2) F48T12HO	4300	.77	125

*Comparative yearly lighting energy cost per 1000 lumens.