

Cam-Lok™ J Series Connectors are specifically designed to meet the needs of demanding portable applications. J Series Plugs and Receptacles are the proven industry standard single pole connectors for reliability and service with added safety.

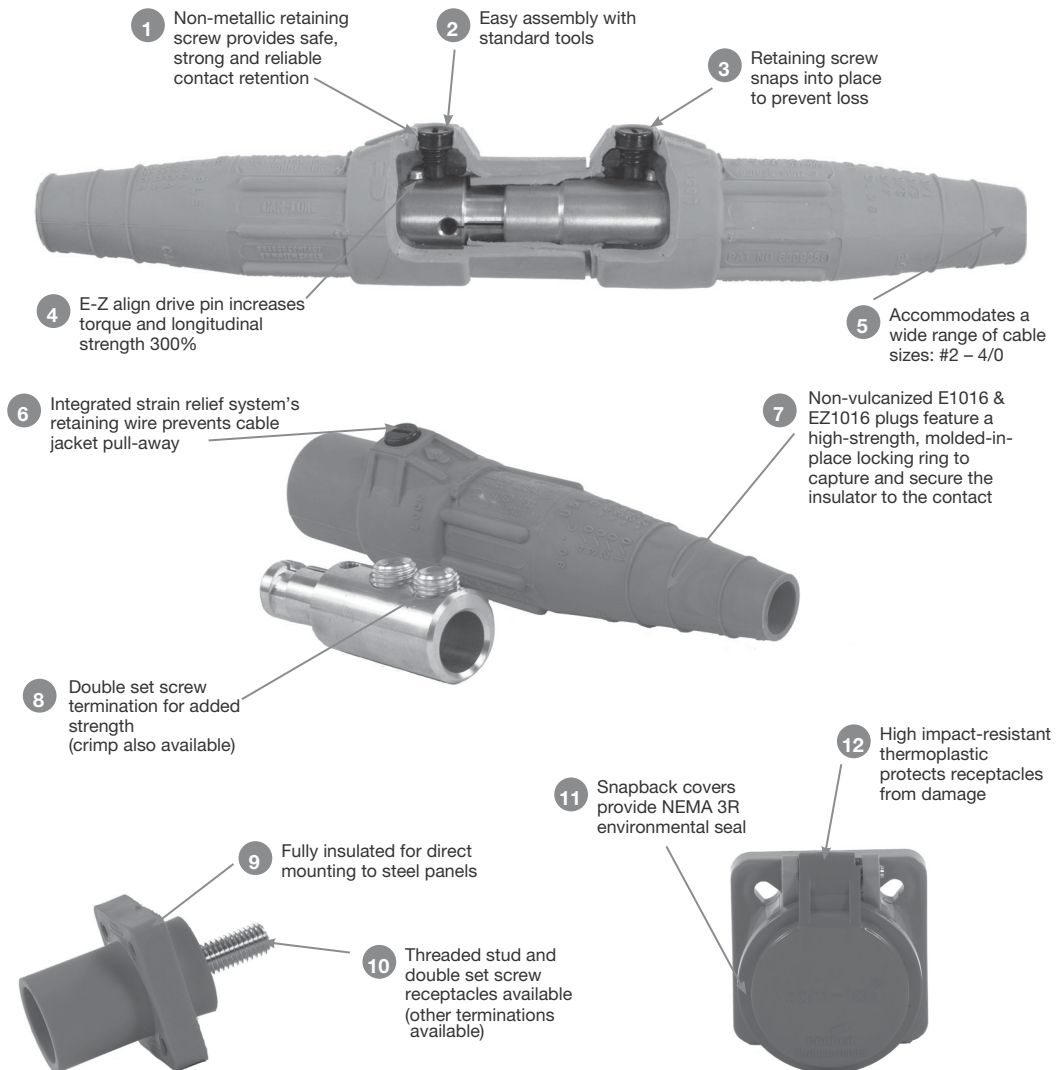
### Applications:

- J Series Plugs and Receptacles are specifically designed for industrial power distribution applications requiring quick, tool-free connections
- Ideal for portable power, power distribution, motors, generators, and entertainment applications
- J Series replaces traditional hard wiring while cutting downtime and maintenance
- J Series Connectors are insulated, shatter/crack-resistant and watertight, plus heat-, weather-, ozone-, oil-, and abrasion-resistant

### Certifications and Compliances:

- Listed to UL498, File No. E67181
- CSA certified to C22.2 No. 182.3 LR13963

### Features:



### Environmental Ratings:

- NEMA 3R or NEMA 4

### Standard Materials:

- Accepts cable sizes: #8 AWG - 750 MCM
- Insulator - elastomeric or rubber
- Contact - brass or copper

### Electrical Ratings:

- 600 Volts AC/DC
- 690 Amps continuous

### Temperature Ratings:

- -40°C to 105°C

# Cam-Lok™ J Series E1017 Non-vulcanized Plugs

**Cable Size 350-500 MCM**  
**600V AC/DC**  
**Up to 545A Continuous**

NEMA 3R

11P

## J Series E1017, Rubber, Non-vulcanized, Double Set Screw Connection

### Features:

- Double cam principle provides a positive, vibration-proof connection
- Self-compensating for wear
- No moving contact surfaces, eliminating arcing or burning
- Superior electro-mechanical connections
- Locked contacts will withstand a pulling force of 1,000 lbs.
- 1/3 of a turn assures a high pressure contact approaching 600 lbs. per sq. in., providing minimum resistance
- Contacts carefully machined from a high conductivity brass to a smooth sliding fit and easy locking action
- Watertight rubber insulators molded from colorfast material, color-coded for easy phase identification
- Recessed contacts protected by insulating jacket that extends beyond contact ends for safety
- Integrated strain relief system features a retaining wire that prevents cable jacket pull-away and bare conductor exposure
- Plugs feature a high strength, molded-in-place locking ring to capture and secure the insulator to the contact
- Accepts a wide range of cable sizes

### Testing and Code Compliance:

- Listed to UL498, File No. E67181
- CSA certified to C22.2 No. 182.3-M1987, File No. LR13963

### Material Characteristics:

- Insulator - rubber
- Environmental rating: NEMA 3R
- Temperature rating: -40°C to 105°C

### Ordering Information - Double Set Screw Non-vulcanized Male Plugs:



E1017-356

Cable Size	Color	Complete Cat. #	Contact Only Cat. #	Insulator Only Cat. #
350-500 MCM	Black	E1017-350	A200612-1	A200056-1
350-500 MCM	Red	E1017-352	A200612-1	A200056-3
350-500 MCM	Green	E1017-354	A200612-1	A200056-5
350-500 MCM	White	E1017-355	A200612-1	A200056-6
350-500 MCM	Blue	E1017-356	A200612-1	A200056-37
350-500 MCM	Brown	E1017-357	A200612-1	A200056-42
350-500 MCM	Orange	E1017-353	A200612-1	A200056-4
350-500 MCM	Yellow	E1017-351	A200612-1	A200056-2

### Ordering Information - Double Set Screw Non-vulcanized Female Plugs:

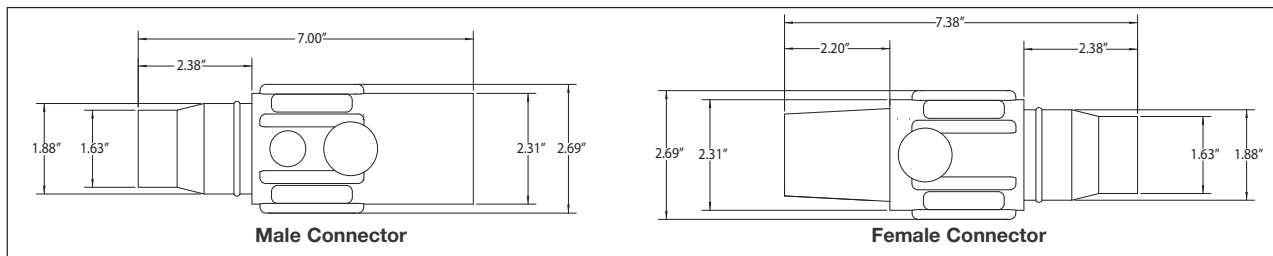


E1017-377

Cable Size	Color	Complete Cat. #	Contact Only Cat. #	Insulator Only Cat. #
350-500 MCM	Black	E1017-375	A200614-2	A200040-1
350-500 MCM	Red	E1017-377	A200614-2	A200040-3
350-500 MCM	Green	E1017-379	A200614-2	A200040-5
350-500 MCM	White	E1017-380	A200614-2	A200040-6
350-500 MCM	Blue	E1017-381	A200614-2	A200040-39
350-500 MCM	Brown	E1017-382	A200614-2	A200040-37
350-500 MCM	Orange	E1017-378	A200614-2	A200040-4
350-500 MCM	Yellow	E1017-376	A200614-2	A200040-2

To order single packaged products, add a "K" suffix to the complete catalog number.

### Dimensions:



11P

**Cam-Lok™ J Series E1017  
Vulcanized Plugs**  
Cable Size 250 MCM  
600V AC/DC  
Up to 340A Continuous

**J Series E1017, Rubber, Vulcanized, Crimp Connection**

**Features:**

- Double cam principle provides a positive, vibration-proof connection
- Self-compensating for wear
- No moving contact surfaces, eliminating arcing or burning
- Superior electro-mechanical connections
- Locked contacts will withstand a pulling force of 1,000 lbs.
- 1/3 of a turn assures a high pressure contact approaching 600 lbs. per sq. in., providing minimum resistance
- Contacts carefully machined from a high conductivity brass to a smooth sliding fit and easy locking action
- Watertight rubber insulators molded from colorfast material, color-coded for easy phase identification
- Recessed contacts protected by insulating jacket that extends beyond contact ends for safety
- Integrated strain relief system features a retaining wire that prevents cable jacket pull-away and bare conductor exposure
- Plugs feature a high strength, molded-in-place locking ring to capture and secure the insulator to the contact

**Testing and Code Compliance:**

- Listed to UL498, File No. E67181
- CSA certified to C22.2 No. 182.3-M1987, File No. LR13963

**Material Characteristics:**

- Insulator - rubber
- Environmental rating: NEMA 3R
- Temperature rating: -40°C to 105°C

**Ordering Information - Crimp Vulcanized Male Plugs (Not UL Listed):**



E1017-108

Cable Size	Color	Complete Cat. #	Contact Only Cat. #	Insulator Only Cat. #
250 MCM	Black	E1017-94	A200028-13	A200056-1
250 MCM	Red	E1017-92	A200028-13	A200056-3
250 MCM	Green	E1017-93	A200028-13	A200056-5
250 MCM	White	E1017-95	A200028-13	A200056-6
250 MCM	Blue	E1017-96	A200028-13	A200056-37
250 MCM	Brown	E1017-108	A200028-13	A200056-42
250 MCM	Orange	E1017-109	A200028-13	A200056-4
250 MCM	Yellow	E1017-110	A200028-13	A200056-2

**Ordering Information - Crimp Vulcanized Female Plugs (Not UL Listed):**

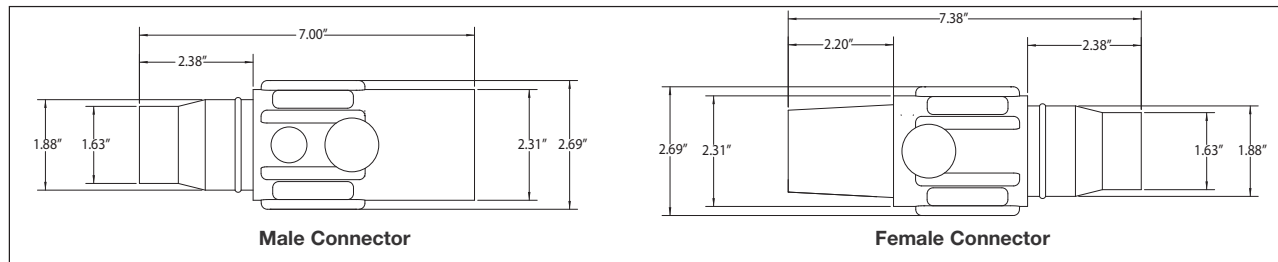


E1017-113

Cable Size	Color	Complete Cat. #	Contact Only Cat. #	Insulator Only Cat. #
250 MCM	Black	E1017-90	A200027-5	A200040-1
250 MCM	Red	E1017-88	A200027-5	A200040-3
250 MCM	Green	E1017-89	A200027-5	A200040-5
250 MCM	White	E1017-91	A200027-5	A200040-6
250 MCM	Blue	E1017-98	A200027-5	A200040-39
250 MCM	Brown	E1017-111	A200027-5	A200040-37
250 MCM	Orange	E1017-112	A200027-5	A200040-4
250 MCM	Yellow	E1017-113	A200027-5	A200040-2

To order single packaged products, add a "K" suffix to the complete catalog number.

**Dimensions:**



# Cam-Lok™ J Series E1017 Vulcanized Plugs

**Cable Size 350 MCM**  
**600V AC/DC**  
**Up to 445A Continuous**

NEMA 3R

11P

## J Series E1017, Rubber, Vulcanized, Crimp Connection

### Features:

- Double cam principle provides a positive, vibration-proof connection
- Self-compensating for wear
- No moving contact surfaces, eliminating arcing or burning
- Superior electro-mechanical connections
- Locked contacts will withstand a pulling force of 1,000 lbs.
- 1/3 of a turn assures a high pressure contact approaching 600 lbs. per sq. in., providing minimum resistance
- Contacts carefully machined from a high conductivity brass to a smooth sliding fit and easy locking action
- Watertight rubber insulators molded from colorfast material, color-coded for easy phase identification
- Recessed contacts protected by insulating jacket that extends beyond contact ends for safety
- Integrated strain relief system features a retaining wire that prevents cable jacket pull-away and bare conductor exposure
- Plugs feature a high strength, molded-in-place locking ring to capture and secure the insulator to the contact

### Testing and Code Compliance:

- Listed to UL498, File No. E67181
- CSA certified to C22.2 No. 182.3-M1987, File No. LR13963

### Material Characteristics:

- Insulator - rubber
- Environmental rating: NEMA 3R
- Temperature rating: -40°C to 105°C

### Ordering Information - Crimp Vulcanized Male Plugs:



E1017-26

Cable Size	Color	Complete Cat. #	Contact Only Cat. #	Insulator Only Cat. #
350 MCM	Black	E1017-1	A200028-1	A200056-1
350 MCM	Red	E1017-3	A200028-1	A200056-3
350 MCM	Green	E1017-5	A200028-1	A200056-5
350 MCM	White	E1017-6	A200028-1	A200056-6
350 MCM	Blue	E1017-26	A200028-1	A200056-37
350 MCM	Brown	E1017-31	A200028-1	A200056-42
350 MCM	Orange	E1017-4	A200028-1	A200056-4
350 MCM	Yellow	E1017-2	A200028-1	A200056-2

### Ordering Information - Crimp Vulcanized Female Plugs:

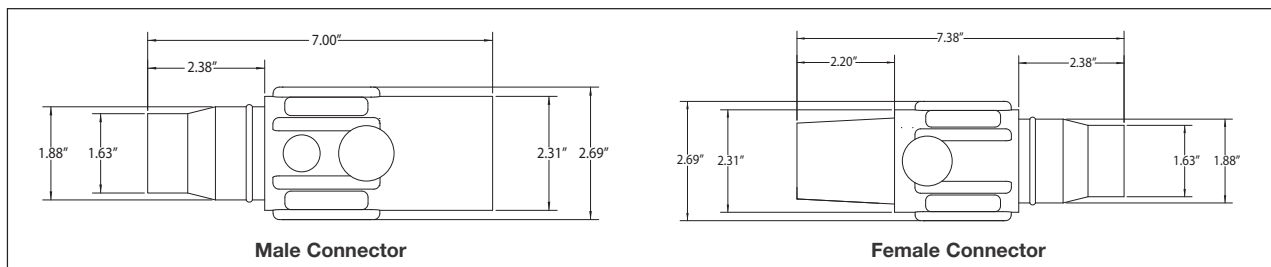


E1017-79

Cable Size	Color	Complete Cat. #	Contact Only Cat. #	Insulator Only Cat. #
350 MCM	Black	E1017-50	A200027-5	A200040-1
350 MCM	Red	E1017-52	A200027-5	A200040-3
350 MCM	Green	E1017-54	A200027-5	A200040-5
350 MCM	White	E1017-55	A200027-5	A200040-6
350 MCM	Blue	E1017-74	A200027-5	A200040-39
350 MCM	Brown	E1017-79	A200027-5	A200040-37
350 MCM	Orange	E1017-53	A200027-5	A200040-4
350 MCM	Yellow	E1017-51	A200027-5	A200040-2

To order single packaged products, add a "K" suffix to the complete catalog number.

### Dimensions:



**Cam-Lok™ J Series E1017  
Vulcanized Plugs**  
Cable Size 500 MCM  
600V AC/DC  
Up to 545A Continuous

**J Series E1017, Rubber, Vulcanized, Crimp Connection**

**Features:**

- Double cam principle provides a positive, vibration-proof connection
- Self-compensating for wear
- No moving contact surfaces, eliminating arcing or burning
- Superior electro-mechanical connections
- Locked contacts will withstand a pulling force of 1,000 lbs.
- 1/3 of a turn assures a high pressure contact approaching 600 lbs. per sq. in., providing minimum resistance
- Contacts carefully machined from a high conductivity brass to a smooth sliding fit and easy locking action
- Watertight rubber insulators molded from colorfast material, color-coded for easy phase identification
- Recessed contacts protected by insulating jacket that extends beyond contact ends for safety
- Integrated strain relief system features a retaining wire that prevents cable jacket pull-away and bare conductor exposure
- Plugs feature a high strength, molded-in-place locking ring to capture and secure the insulator to the contact

**Testing and Code Compliance:**

- Listed to UL498, File No. E67181
- CSA certified to C22.2 No. 182.3-M1987, File No. LR13963

**Material Characteristics:**

- Insulator - rubber
- Environmental rating: NEMA 3R
- Temperature rating: -40°C to 105°C

**Ordering Information - Crimp Vulcanized Male Plugs:**



E1017-9

Cable Size	Color	Complete Cat. #	Contact Only Cat. #	Insulator Only Cat. #
500 MCM	Black	E1017-7	A200028-2	A200056-1
500 MCM	Red	E1017-9	A200028-2	A200056-3
500 MCM	Green	E1017-11	A200028-2	A200056-5
500 MCM	White	E1017-12	A200028-2	A200056-6
500 MCM	Blue	E1017-27	A200028-2	A200056-37
500 MCM	Brown	E1017-32	A200028-2	A200056-42
500 MCM	Orange	E1017-10	A200028-2	A200056-4
500 MCM	Yellow	E1017-8	A200028-2	A200056-2

**Ordering Information - Crimp Vulcanized Female Plugs:**

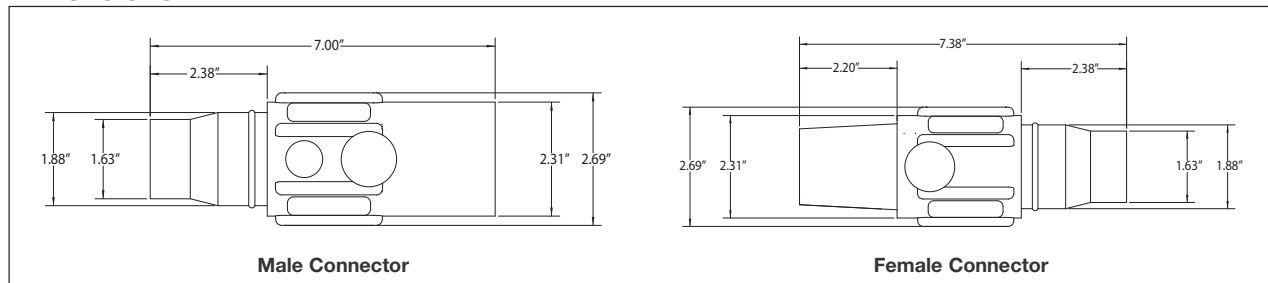


E1017-61

Cable Size	Color	Complete Cat. #	Contact Only Cat. #	Insulator Only Cat. #
500 MCM	Black	E1017-56	A200027-6	A200040-1
500 MCM	Red	E1017-58	A200027-6	A200040-3
500 MCM	Green	E1017-60	A200027-6	A200040-5
500 MCM	White	E1017-61	A200027-6	A200040-6
500 MCM	Blue	E1017-75	A200027-6	A200040-39
500 MCM	Brown	E1017-80	A200027-6	A200040-37
500 MCM	Orange	E1017-59	A200027-6	A200040-4
500 MCM	Yellow	E1017-57	A200027-6	A200040-2

To order single packaged products, add a "K" suffix to the complete catalog number.

**Dimensions:**



Male Connector

Female Connector

# Cam-Lok™ J Series E1017 Vulcanized Plugs

**Cable Size 750 MCM**  
**600V AC/DC**  
**Up to 690A Continuous**

NEMA 3R

11P

## J Series E1017, Rubber, Vulcanized, Crimp Connection

### Features:

- Double cam principle provides a positive, vibration-proof connection
- Self-compensating for wear
- No moving contact surfaces, eliminating arcing or burning
- Superior electro-mechanical connections
- Locked contacts will withstand a pulling force of 1,000 lbs.
- 1/3 of a turn assures a high pressure contact approaching 600 lbs. per sq. in., providing minimum resistance
- Contacts carefully machined from a high conductivity brass to a smooth sliding fit and easy locking action
- Watertight rubber insulators molded from colorfast material, color-coded for easy phase identification
- Recessed contacts protected by insulating jacket that extends beyond contact ends for safety
- Integrated strain relief system features a retaining wire that prevents cable jacket pull-away and bare conductor exposure
- Plugs feature a high strength, molded-in-place locking ring to capture and secure the insulator to the contact

### Testing and Code Compliance:

- Listed to UL498, File No. E67181
- CSA certified to C22.2 No. 182.3-M1987, File No. LR13963

### Material Characteristics:

- Insulator - rubber
- Environmental rating: NEMA 3R
- Temperature rating: -40°C to 105°C

### Ordering Information - Crimp Vulcanized Male Plugs:



E1017-18

Cable Size	Color	Complete Cat. #	Contact Only Cat. #	Insulator Only Cat. #
750 MCM	Black	E1017-13	A200028-3	A200056-7
750 MCM	Red	E1017-15	A200028-3	A200056-9
750 MCM	Green	E1017-17	A200028-3	A200056-11
750 MCM	White	E1017-18	A200028-3	A200056-12
750 MCM	Blue	E1017-28	A200028-3	A200056-41
750 MCM	Brown	E1017-33	A200028-3	A200056-43
750 MCM	Orange	E1017-16	A200028-3	A200056-10
750 MCM	Yellow	E1017-14	A200028-3	A200056-8

### Ordering Information - Crimp Vulcanized Female Plugs:

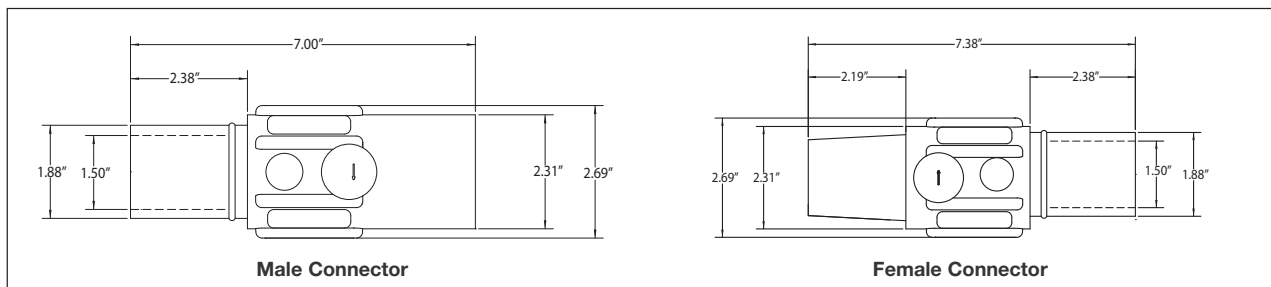


E1017-76

Cable Size	Color	Complete Cat. #	Contact Only Cat. #	Insulator Only Cat. #
750 MCM	Black	E1017-62	A200027-7	A200040-7
750 MCM	Red	E1017-64	A200027-7	A200040-9
750 MCM	Green	E1017-66	A200027-7	A200040-11
750 MCM	White	E1017-67	A200027-7	A200040-12
750 MCM	Blue	E1017-76	A200027-7	A200040-40
750 MCM	Brown	E1017-81	A200027-7	A200040-38
750 MCM	Orange	E1017-65	A200027-7	A200040-10
750 MCM	Yellow	E1017-63	A200027-7	A200040-8

To order single packaged products, add a "K" suffix to the complete catalog number.

### Dimensions:



**Crouse-Hinds**  
by **E.T.N.**

11P

**Cam-Lok™ J Series E1017  
Vulcanized Plugs**  
Cable Size 800 MCM  
600V AC/DC  
Up to 690A Continuous

**J Series E1017, Rubber, Vulcanized, Crimp Connection**

**Features:**

- Double cam principle provides a positive, vibration-proof connection
- Self-compensating for wear
- No moving contact surfaces, eliminating arcing or burning
- Superior electro-mechanical connections
- Locked contacts will withstand a pulling force of 1,000 lbs.
- 1/3 of a turn assures a high pressure contact approaching 600 lbs. per sq. in., providing minimum resistance
- Contacts carefully machined from a high conductivity brass to a smooth sliding fit and easy locking action
- Watertight rubber insulators molded from colorfast material, color-coded for easy phase identification
- Recessed contacts protected by insulating jacket that extends beyond contact ends for safety
- Integrated strain relief system features a retaining wire that prevents cable jacket pull-away and bare conductor exposure
- Plugs feature a high strength, molded-in-place locking ring to capture and secure the insulator to the contact

**Testing and Code Compliance:**

- Listed to UL498, File No. E67181
- CSA certified to C22.2 No. 182.3-M1987, File No. LR13963

**Material Characteristics:**

- Insulator - rubber
- Environmental rating: NEMA 3R
- Temperature rating: -40°C to 105°C

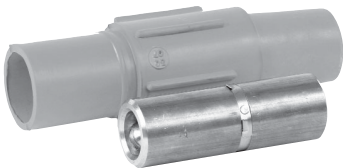
**Ordering Information - Crimp Vulcanized Male Plugs (Not UL Listed):**



E1017-24

Cable Size	Color	Complete Cat. #	Contact Only Cat. #	Insulator Only Cat. #
800 MCM	Black	E1017-19	A200028-4	A200056-7
800 MCM	Red	E1017-21	A200028-4	A200056-9
800 MCM	Green	E1017-23	A200028-4	A200056-11
800 MCM	White	E1017-24	A200028-4	A200056-12
800 MCM	Blue	E1017-29	A200028-4	A200056-41
800 MCM	Brown	E1017-34	A200028-4	A200056-43
800 MCM	Orange	E1017-22	A200028-4	A200056-10
800 MCM	Yellow	E1017-20	A200028-4	A200056-8

**Ordering Information - Crimp Vulcanized Female Plugs (Not UL Listed):**



E1017-71

Cable Size	Color	Complete Cat. #	Contact Only Cat. #	Insulator Only Cat. #
800 MCM	Black	E1017-68	A200027-8	A200040-7
800 MCM	Red	E1017-70	A200027-8	A200040-9
800 MCM	Green	E1017-72	A200027-8	A200040-11
800 MCM	White	E1017-73	A200027-8	A200040-12
800 MCM	Blue	E1017-77	A200027-8	A200040-40
800 MCM	Brown	E1017-82	A200027-8	A200040-38
800 MCM	Orange	E1017-71	A200027-8	A200040-10
800 MCM	Yellow	E1017-69	A200027-8	A200040-8

To order single packaged products, add a "K" suffix to the complete catalog number.

**Dimensions:**

