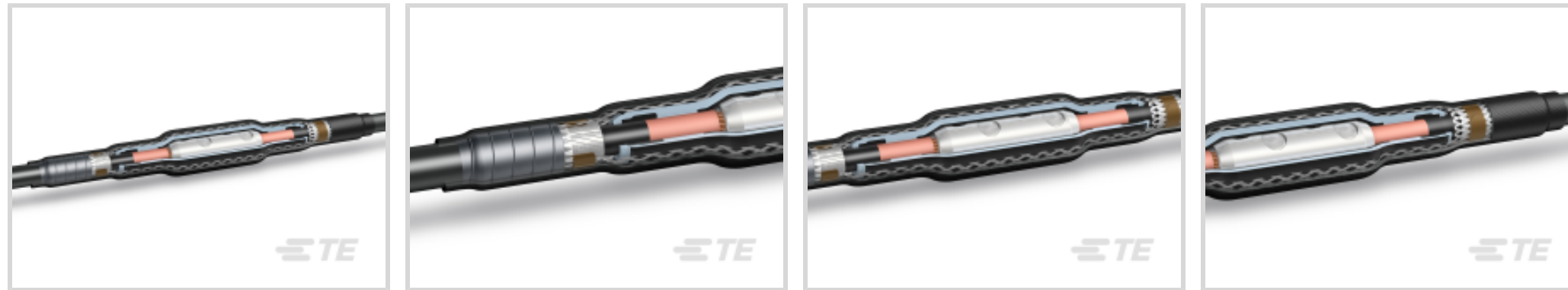




Energy & Power > Power Cable Accessories > Joints & Splices > Inline Splice: Cold Shrink, 15-35 kV



Product Availability: **Americas**

Installation Instruction: **English**

Joints & Splice Product Type: **Inline Joint**

Voltage Class: **≤ 15 kV**

Compatible Conductor Range: **750 – 1250 AWG/kcmil**

[All Inline Splice: Cold Shrink, 15-35 kV \(38\)](#)

## Features

### Product Type Features

Coating Style	Painting
Material System	Silicone
Shelf Life	2 Years
Joints & Splices Connector Type	Mechanical
Cable Sealing Method	Mastic
Installation Technology	Cold Applied
Adhesive Coating	Without
Joints & Splice Product Type	Inline Joint
Cable Shield Style	Concentric Neutral, FS, Tape

### Configuration Features

Number of Cores	1
-----------------	---

### Electrical Characteristics

Voltage Class	≤ 15 kV
---------------	---------

### Body Features

Primary Product Color	Black
Flexibility	Semi-Flexible



Insulation Material	Silicone Rubber
---------------------	-----------------

### Dimensions

Length (Installed)	939 mm[37 in]
Compatible Conductor Range	750 – 1250 AWG/kcmil
Compatible Insulation Diameter Range	32.5 – 52 mm[1.28 – 2.05 in]
Compatible Conductor Diameter Range	25.34 – 32.74 mm[.998 – 1.289 in]
Sheath Outside Diameter	66.04 mm[2.6 in]

### Industry Standards

Compatible With Approved Standards Products	IEEE 404
---	----------

### Product Availability

Product Availability	Americas
----------------------	----------

### Packaging Features

Packaging Quantity	1
Packaging Method	Cardbox

### Other

Product Use	Power Cables
Installation Instruction	English

## Product Compliance

[For compliance documentation, visit the product page on TE.com>](#)

EU RoHS Directive 2011/65/EU	Compliant with Exemptions
EU ELV Directive 2000/53/EC	Compliant
China RoHS 2 Directive MIIT Order No 32, 2016	Restricted Materials Above Threshold
EU REACH Regulation (EC) No. 1907/2006	Current ECHA Candidate List: JUNE 2024 (241) Candidate List Declared Against: JUN 2016 (169) SVHC > Threshold: Not Yet Reviewed
Halogen Content	Low Halogen - Br, Cl, F, I < 900 ppm per homogenous material. Also BFR/CFR/PVC Free
Solder Process Capability	Not applicable for solder process capability

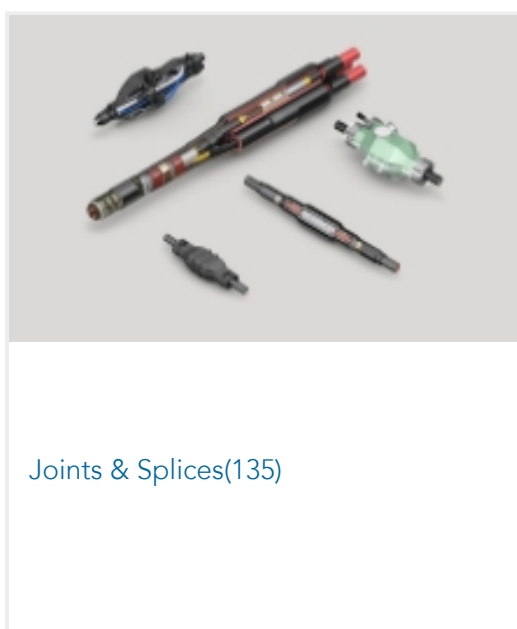
Product Compliance Disclaimer

This information is provided based on reasonable inquiry of our suppliers and represents our current actual knowledge based on the information they provided. This information is subject to change. The part numbers that TE has identified as EU RoHS compliant have a maximum concentration of 0.1% by weight in homogenous materials for lead, hexavalent chromium, mercury, PBB, PBDE, DBP, BBP, DEHP, DIBP, and 0.01% for cadmium, or qualify for an exemption to these limits as defined in the Annexes of Directive 2011/65/EU (RoHS2). Finished electrical and electronic equipment products will be CE marked as required by Directive 2011/65/EU. Components may not be CE marked. Additionally, the part numbers that TE has identified as EU ELV compliant have a maximum concentration of 0.1% by weight in homogenous materials for lead, hexavalent chromium, and mercury, and 0.01% for cadmium, or qualify for an exemption to these limits as defined in the Annexes of Directive 2000/53/EC (ELV). Regarding the REACH Regulations, TE's information on SVHC in articles for this part number is still based on the European Chemical Agency (ECHA) 'Guidance on requirements for substances in articles' (Version: 2, April 2011), applying the 0.1% weight on weight concentration threshold at the finished product level. TE is aware of the European Court of Justice ruling of September 10th, 2015 also known as O5A (Once An Article Always An Article) stating that, in case of 'complex object', the threshold for a SVHC must be applied to both the product as a whole and simultaneously to each of the articles forming part of its composition. TE has evaluated this ruling based on the new ECHA "Guidance on requirements for substances in articles" (June 2017, version 4.0) and will be updating its statements accordingly.

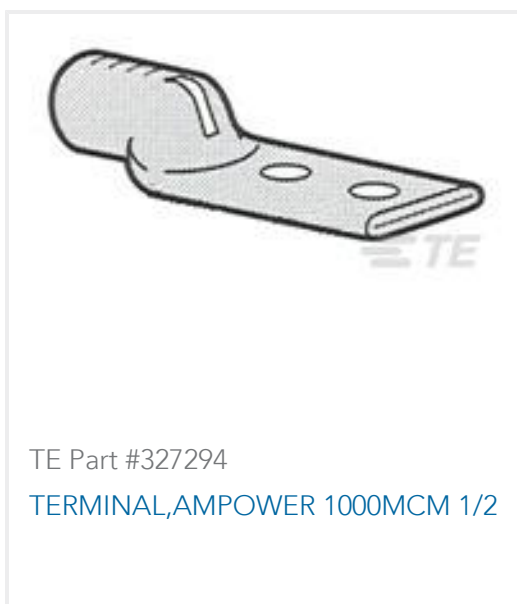
## Compatible Parts



## Also in the Series | RAYCHEM CSJ

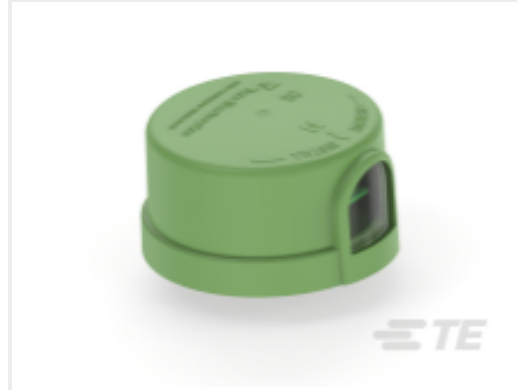


## Customers Also Bought





TE Part #401619-000  
TFT-153E-SG



TE Part #G37412-000  
ALR-8090-VFS-GN



TE Part #EA3546-000  
CSJA-1522M6



TE Part #1-1393117-0  
KUP-11AA5-24=KU



TE Part #1-6609074-5  
60DCF10 J0=F7939

## Documents

### Product Drawings

[CSJA-1524](#)

English

### Datasheets & Catalog Pages

[CSJA COLD SHRINK IN-LINE JOINTS IEEE](#)

English