

SQUARE D



INSTALLATION INSTRUCTIONS CAT. NOS. QOMB1, QOMB2 AND QOMB3 QO UNIT MOUNTING BASE KITS FOR QO OR QO GFI PLUG-ON CIRCUIT BREAKERS (70 AMP. MAX.)

THIS UNIT MOUNTING BASE KIT CONTAINS THE FOLLOWING:

LUG BARRIER
1 EACH



MOUNTING BASE
QOMB1 = 1 EACH
QOMB2 = 2 EACH
QOMB3 = 3 EACH



1. Hook raised nub of LUG BARRIER under the edge of one mounting base (see Fig. 1) prior to installing mounting base.
2. Install mounting bases such that each mounting base rests against the next mounting bases.

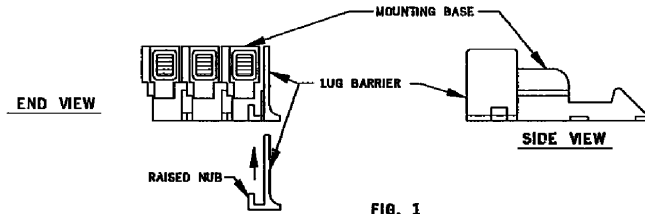
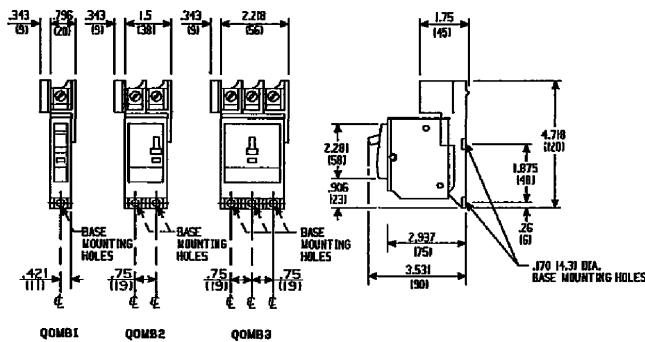


FIG. 1

UNIT MOUNTING BASE KITS

Dimensions in inches (mm)



MOUNTING BASE LUG WIRE SIZE (AWG)	TORQUE VALUE
12-10 AL	35 LB/INS.
8-4 AL	40 LB/INS.
3-2 AL	45 LB/INS.

SQUARE D COMPANY

40269-956-02