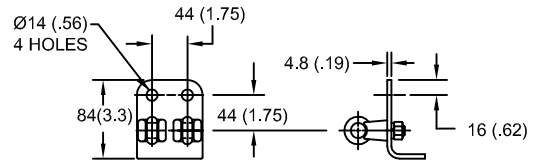
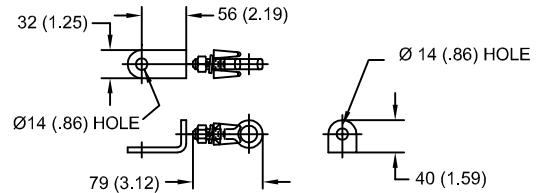


LINE TERMINAL DETAIL

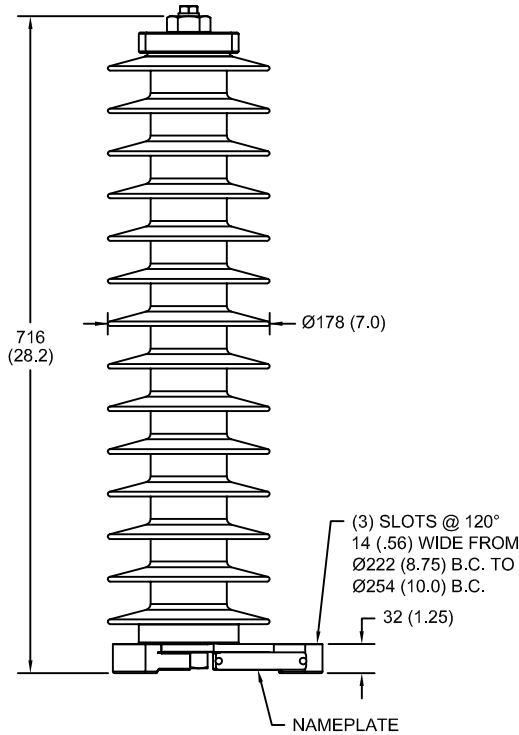


HDG 4-HOLE TERMINAL PAD, PART No. 274914-4002
 TWO HDG TERMINALS, PART No. 271414-3001
 SUITABLE FOR Cu OR Al CONDUCTOR SIZE
 Ø 7 (.25) - Ø 21 (.81) DIA
 25 - 240 sq mm
 AWG#4 - 500 MCM

GROUND TERMINAL DETAIL



HDG TERMINAL BRACKET, PART No. 89606-4001
 ONE HDG TERMINAL, PART No. 271414-3001
 SUITABLE FOR Cu OR Al CONDUCTOR SIZE
 Ø 7 (.25) - Ø 21 (.81) DIA
 25 - 240 sq mm
 AWG#4 - 500 MCM



CHARACTERISTICS

RATED VOLTAGE	60 kVrms
MCOV	48 kVrms
MASS	16.3 kg (35.9 lb)
COG ABOVE BASE	358 (14.1)
CREEPAGE DISTANCE	1827 (71.9)
STRIKE DISTANCE	640 (25.2)
LIGHTNING IMP W/S	367 kVpk
SWITCHING IMP WET W/S	308 kVpk
POWER FREQ WET W/S	172 kVrms
TOV 1s NO PRIOR DUTY	69.0 kVrms
TOV 10s NO PRIOR DUTY	66.0 kVrms
TOV 1s W/PRIOR DUTY	66.7 kVrms
TOV 10s W/PRIOR DUTY	64.1 kVrms

CANTILEVER FORCE

MAXIMUM CONTINUOUS	1414 N (318 lbs)
ULTIMATE (max pk)	2829 N (636 lbs)

RECOMMENDED CLEARANCE (CENTER - CENTER)

PHASE TO GROUND	411 (16.2)
PHASE TO PHASE	561 (22.1)

- NOTES:
 1. DIMENSIONS IN millimeters(inches) SUBJECT TO ±3% TOLERANCE
 2. CLEARANCE AND INSULATION W/S VOLTAGE APPLY AT SEA LEVEL
 3. ARRESTER SUITABLE FOR OPERATION AT ALTITUDES UP TO 1800 m (6000 ft)
 4. PACKAGED IN A CORRUGATED BOX.

.5µSEC 10kA IR kV	SWITCHING SURGE IR kV		MAXIMUM 8/20 DISCHARGE VOLTAGE - kV AT					
	500 A	1 KA	1.5 kA	3.0 kA	5 kA	10 kA	20 kA	40 kA
160	114	119	122	128	134	144	156	178

ANSI STATION CLASS SURGE ARRESTER Program Revision 2011.06.7.12.40.56 REV DATE 05/03/11	CONFIDENTIAL: THIS DRAWING AND ITS CONTENTS ARE CONFIDENTIAL AND THE EXCLUSIVE PROPERTY OF HUBBELL POWER SYSTEMS. NO PUBLICATION, DISTRIBUTION OR COPIES MAY BE MADE WITHOUT THE WRITTEN CONSENT OF HUBBELL POWER SYSTEMS. HUBBELL POWER SYSTEMS UNPUBLISHED ALL RIGHTS RESERVED UNDER THE COPYRIGHT LAWS.	TITLE EVP ARRESTER 48 KV MCOV			
		SIZE S	DWG NO. 112261302	CAT / PART / ASSY NO. EVP004800-3001	REV 0
		DO NOT SCALE THIS DRAWING	DRN BY NON	DATE 05/03/11	SHEET 1 OF 1

