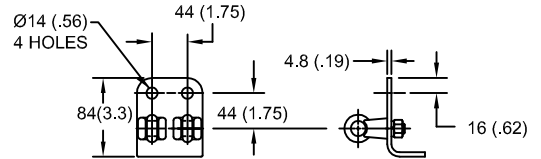
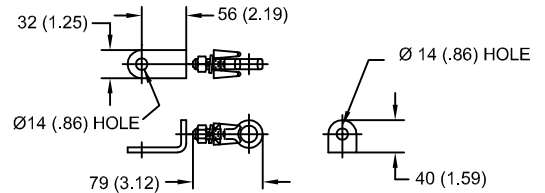


LINE TERMINAL DETAIL



HDG 4-HOLE TERMINAL PAD, PART No. 274914-4002
 TWO HDG TERMINALS, PART No. 271414-3001
 SUITABLE FOR Cu OR Al CONDUCTOR SIZE
 Ø 7 (.25) - Ø 21 (.81) DIA
 25 - 240 sq mm
 AWG#4 - 500 MCM

GROUND TERMINAL DETAIL



HDG TERMINAL BRACKET, PART No. 89606-4001
 ONE HDG TERMINAL, PART No. 271414-3001
 SUITABLE FOR Cu OR Al CONDUCTOR SIZE
 Ø 7 (.25) - Ø 21 (.81) DIA
 25 - 240 sq mm
 AWG#4 - 500 MCM

CHARACTERISTICS	
RATED VOLTAGE	96 kVrms
MCOV	76 kVrms
MASS	26.7 kg (58.9 lb)
COG ABOVE BASE	589 (23.2)
CREEPAGE DISTANCE	3124 (123.0)
STRIKE DISTANCE	1100 (43.3)
LIGHTNING IMP W/S	631 kVpk
SWITCHING IMP WET W/S	529 kVpk
POWER FREQ WET W/S	275 kVrms
TOV 1s NO PRIOR DUTY	111 kVrms
TOV 10s NO PRIOR DUTY	106 kVrms
TOV 1s W/PRIOR DUTY	107 kVrms
TOV 10s W/PRIOR DUTY	103 kVrms

CANTILEVER FORCE	
MAXIMUM CONTINUOUS	897 N (202 lbs)
ULTIMATE (max pk)	1794 N (403 lbs)

RECOMMENDED CLEARANCE (CENTER - CENTER)	
PHASE TO GROUND	640 (25.2)
PHASE TO PHASE	818 (32.2)

- NOTES:
 1. DIMENSIONS IN millimeters(inches) SUBJECT TO ±3% TOLERANCE
 2. CLEARANCE AND INSULATION W/S VOLTAGE APPLY AT SEA LEVEL
 3. ARRESTER SUITABLE FOR OPERATION AT ALTITUDES UP TO 1800 m (6000 ft)
 4. PACKAGED IN A CORRUGATED BOX.

.5µSEC 10kA IR kV	SWITCHING SURGE IR kV		MAXIMUM 8/20 DISCHARGE VOLTAGE - kV AT					
	500 A	1 KA	1.5 kA	3.0 kA	5 kA	10 kA	20 kA	40 kA
257	184	191	196	206	216	232	251	286

ANSI STATION CLASS SURGE ARRESTER Program Revision 2011.06.7.12.40.56 REV DATE 05/03/11	CONFIDENTIAL: THIS DRAWING AND ITS CONTENTS ARE CONFIDENTIAL AND THE EXCLUSIVE PROPERTY OF HUBBELL POWER SYSTEMS. NO PUBLICATION, DISTRIBUTION OR COPIES MAY BE MADE WITHOUT THE WRITTEN CONSENT OF HUBBELL POWER SYSTEMS. HUBBELL POWER SYSTEMS UNPUBLISHED ALL RIGHTS RESERVED UNDER THE COPYRIGHT LAWS.	TITLE EVP ARRESTER 76 KV MCOV			
		SIZE S	DWG NO. 112261306	CAT / PART / ASSY NO. EVP007600-3001	REV 0
		DO NOT SCALE THIS DRAWING	DRN BY NON	DATE 05/03/11	SHEET 1 OF 1