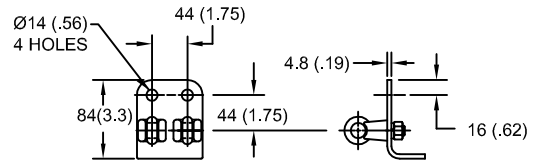
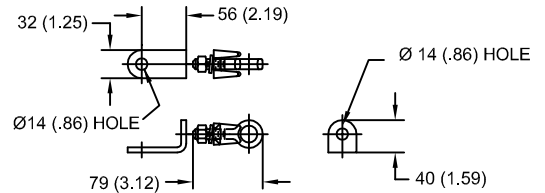


**LINE TERMINAL DETAIL**

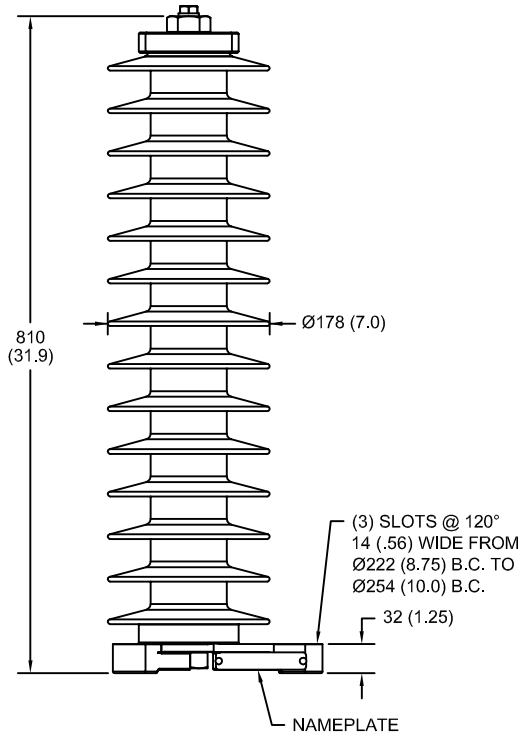


HDG 4-HOLE TERMINAL PAD, PART No. 274914-4002  
 TWO HDG TERMINALS, PART No. 271414-3001  
 SUITABLE FOR Cu OR Al CONDUCTOR SIZE  
 Ø 7 (.25) - Ø 21 (.81) DIA  
 25 - 240 sq mm  
 AWG#4 - 500 MCM

**GROUND TERMINAL DETAIL**



HDG TERMINAL BRACKET, PART No. 89606-4001  
 ONE HDG TERMINAL, PART No. 271414-3001  
 SUITABLE FOR Cu OR Al CONDUCTOR SIZE  
 Ø 7 (.25) - Ø 21 (.81) DIA  
 25 - 240 sq mm  
 AWG#4 - 500 MCM



**CHARACTERISTICS**

RATED VOLTAGE	72 kVrms
MCOV	57 kVrms
MASS	18.6 kg (41.1 lb)
COG ABOVE BASE	406 (16.0)
CREEPAGE DISTANCE	2093 (82.4)
STRIKE DISTANCE	734 (28.9)
LIGHTNING IMP W/S	421 kVpk
SWITCHING IMP WET W/S	353 kVpk
POWER FREQ WET W/S	194 kVrms
TOV 1s NO PRIOR DUTY	82.8 kVrms
TOV 10s NO PRIOR DUTY	79.3 kVrms
TOV 1s W/PRIOR DUTY	80.2 kVrms
TOV 10s W/PRIOR DUTY	77.0 kVrms

**CANTILEVER FORCE**

MAXIMUM CONTINUOUS	1265 N (284 lbs)
ULTIMATE (max pk)	2531 N (569 lbs)

**RECOMMENDED CLEARANCE (CENTER - CENTER)**

PHASE TO GROUND	488 (19.2)
PHASE TO PHASE	645 (25.4)

- NOTES:  
 1. DIMENSIONS IN millimeters(inches) SUBJECT TO ±3% TOLERANCE  
 2. CLEARANCE AND INSULATION W/S VOLTAGE APPLY AT SEA LEVEL  
 3. ARRESTER SUITABLE FOR OPERATION AT ALTITUDES UP TO 1800 m (6000 ft)  
 4. PACKAGED IN A CORRUGATED BOX.

.5µSEC 10kA IR kV	SWITCHING SURGE IR kV		MAXIMUM 8/20 DISCHARGE VOLTAGE - kV AT					
	500 A	1 KA	1.5 kA	3.0 kA	5 kA	10 kA	20 kA	40 kA
192	137	143	147	154	161	173	187	214

<b>ANSI</b> STATION CLASS SURGE ARRESTER  Program Revision 2011.06.7.12.40.56  REV DATE <b>05/03/11</b>	CONFIDENTIAL: THIS DRAWING AND ITS CONTENTS ARE CONFIDENTIAL AND THE EXCLUSIVE PROPERTY OF HUBBELL POWER SYSTEMS. NO PUBLICATION, DISTRIBUTION OR COPIES MAY BE MADE WITHOUT THE WRITTEN CONSENT OF HUBBELL POWER SYSTEMS. HUBBELL POWER SYSTEMS UNPUBLISHED ALL RIGHTS RESERVED UNDER THE COPYRIGHT LAWS.	<b>TITLE</b> EVP ARRESTER 57 KV MCOV			
		SIZE <b>S</b>	DWG NO. <b>112261303</b>	CAT / PART / ASSY NO. <b>EVP005700-3001</b>	REV <b>0</b>
		DO NOT SCALE THIS DRAWING	DRN BY NON	DATE 05/03/11	SHEET 1 OF 1