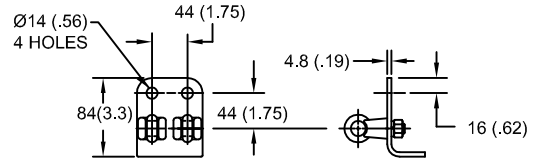


- NOTES:
1. DIMENSIONS IN millimeters(inches) SUBJECT TO $\pm 3\%$ TOLERANCE
 2. CLEARANCE AND INSULATION W/S VOLTAGE APPLY AT SEA LEVEL
 3. ARRESTER SUITABLE FOR OPERATION AT ALTITUDES UP TO 1800 m (6000 ft)
 4. PACKAGED IN A WOOD CRATE.

.5μSEC 10kA IR kV	SWITCHING SURGE IR kV		MAXIMUM 8/20 DISCHARGE VOLTAGE - kV AT					
	500 A	1 KA	1.5 kA	3.0 kA	5 kA	10 kA	20 kA	40 kA
510	366	381	391	411	430	462	499	569

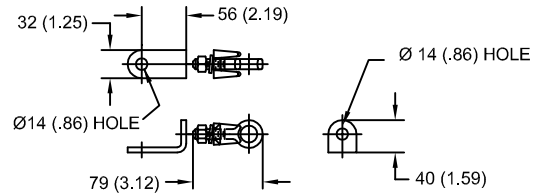
ANSI STATION CLASS SURGE ARRESTER Program Revision 2011.06.7.12.40.56 REV DATE 05/03/11	CONFIDENTIAL: THIS DRAWING AND ITS CONTENTS ARE CONFIDENTIAL AND THE EXCLUSIVE PROPERTY OF HUBBELL POWER SYSTEMS. NO PUBLICATION, DISTRIBUTION OR COPIES MAY BE MADE WITHOUT THE WRITTEN CONSENT OF HUBBELL POWER SYSTEMS. HUBBELL POWER SYSTEMS UNPUBLISHED ALL RIGHTS RESERVED UNDER THE COPYRIGHT LAWS.		TITLE EVP ARRESTER 152 KV MCOV			
	SIZE S	DWG NO. 112261315	CAT / PART / ASSY NO. EVP015200-3001		REV 0	
	DO NOT SCALE THIS DRAWING		DRN BY NON	DATE 05/03/11	SHEET 1 OF 1	

LINE TERMINAL DETAIL



HDG 4-HOLE TERMINAL PAD, PART No. 274914-4002
 TWO HDG TERMINALS, PART No. 271414-3001
 SUITABLE FOR Cu OR Al CONDUCTOR SIZE
 Ø 7 (.25) - Ø 21 (.81) DIA
 25 - 240 sq mm
 AWG#4 - 500 MCM

GROUND TERMINAL DETAIL



HDG TERMINAL BRACKET, PART No. 89606-4001
 ONE HDG TERMINAL, PART No. 271414-3001
 SUITABLE FOR Cu OR Al CONDUCTOR SIZE
 Ø 7 (.25) - Ø 21 (.81) DIA
 25 - 240 sq mm
 AWG#4 - 500 MCM

CHARACTERISTICS	
RATED VOLTAGE	192 kVrms
MCOV	152 kVrms
MASS	54.6 kg (120 lb)
COG ABOVE BASE	1139 (44.8)
CREEPAGE DISTANCE	5482 (215.8)
STRIKE DISTANCE	1753 (69.0)
LIGHTNING IMP W/S	1006 kVpk
SWITCHING IMP WET W/S	843 kVpk
POWER FREQ WET W/S	395 kVrms
TOV 1s NO PRIOR DUTY	221 kVrms
TOV 10s NO PRIOR DUTY	211 kVrms
TOV 1s W/PRIOR DUTY	214 kVrms
TOV 10s W/PRIOR DUTY	205 kVrms

CANTILEVER FORCE	
MAXIMUM CONTINUOUS	256 N (58 lbs)
ULTIMATE (max pk)	1025 N (230 lbs)

RECOMMENDED CLEARANCE (CENTER - CENTER)	
PHASE TO GROUND	1671 (65.8)
PHASE TO PHASE	2024 (79.7)