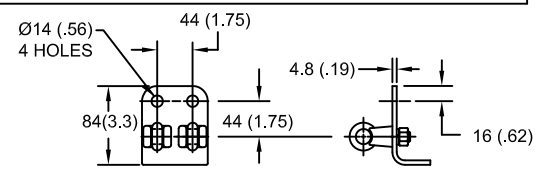
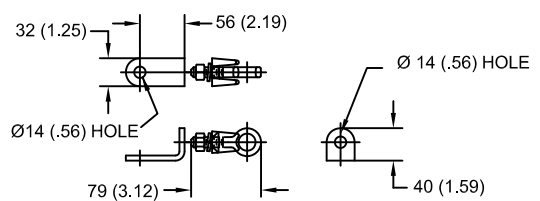


LINE TERMINAL DETAIL



HDG 4-HOLE TERMINAL PAD, PART No. 274914-4002
 TWO HDG TERMINALS, PART No. 271414-3001
 SUITABLE FOR Cu OR Al CONDUCTOR SIZE
 Ø 7 (.25) - Ø 21 (.81) DIA
 25 - 240 sq mm
 AWG#4 - 500 MCM

GROUND TERMINAL DETAIL



HDG TERMINAL BRACKET, PART No. 89606-4001
 ONE HDG TERMINAL, PART No. 271414-3001
 SUITABLE FOR Cu OR Al CONDUCTOR SIZE
 Ø 7 (.25) - Ø 21 (.81) DIA
 25 - 240 sq mm
 AWG#4 - 500 MCM

CHARACTERISTICS

RATED VOLTAGE (Ur)	120 kVrms
MCOV (Uc)	98 kVrms
MASS	33.2 kg (73.1 lb)
COG ABOVE BASE	713 (28.1)
CREEPAGE DISTANCE	3654 (143.9)
STRIKE DISTANCE	1135 (44.7)
LIGHTNING IMP W/S	652 kVpk
SWITCHING IMP WET W/S	546 kVpk
POWER FREQ WET W/S	283 kVrms
TOV 1s NO PRIOR DUTY	139 kVrms
TOV 10s NO PRIOR DUTY	133 kVrms
TOV 1s W/PRIOR DUTY	135 kVrms
TOV 10s W/PRIOR DUTY	129 kVrms

CANTILEVER FORCE

MAXIMUM CONTINUOUS	781 N (176 lbs)
ULTIMATE (max pk)	1562 N (351 lbs)

RECOMMENDED CLEARANCE (METAL - METAL)

PHASE TO GROUND	706.1 (27.8)
PHASE TO PHASE	815.3 (32.1)

- NOTES:
 1. DIMENSIONS IN millimeters(inches) SUBJECT TO ±3% TOLERANCE
 2. CLEARANCE AND INSULATION W/S VOLTAGE APPLY AT SEA LEVEL
 3. ARRESTER SUITABLE FOR OPERATION AT ALTITUDES UP TO 4380 m (14370 ft)
 4. PACKAGED IN A CORRUGATED BOX.

.5µSEC 10kA IR kV	SWITCHING SURGE IR kV		MAXIMUM 8/20 DISCHARGE VOLTAGE - kV AT					
	500 A	1 KA	1.5 kA	3.0 kA	5 kA	10 kA	20 kA	40 kA
322	231	241	246	259	271	291	315	359

ANSI STATION-CLASS SURGE ARRESTER Program Revision 2014.07.1.11.41.40 REV DATE 05/03/11	CONFIDENTIAL: THIS DRAWING AND ITS CONTENTS ARE CONFIDENTIAL AND THE EXCLUSIVE PROPERTY OF HUBBELL POWER SYSTEMS. NO PUBLICATION, DISTRIBUTION OR COPIES MAY BE MADE WITHOUT THE WRITTEN CONSENT OF HUBBELL POWER SYSTEMS. HUBBELL POWER SYSTEMS UNPUBLISHED ALL RIGHTS RESERVED UNDER THE COPYRIGHT LAWS.	TITLE EVP ARRESTER 98 KV MCOV			
		SIZE S	DWG NO. 142391393	CAT / PART / ASSY NO. EVP009800-3001	REV 1
		DO NOT SCALE THIS DRAWING	DRN BY NON	DATE 05/03/11	SHEET 1 OF 1