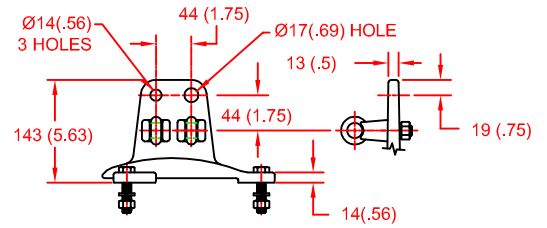
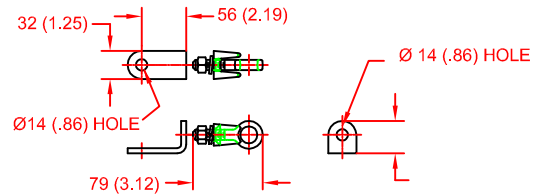


LINE TERMINAL DETAIL

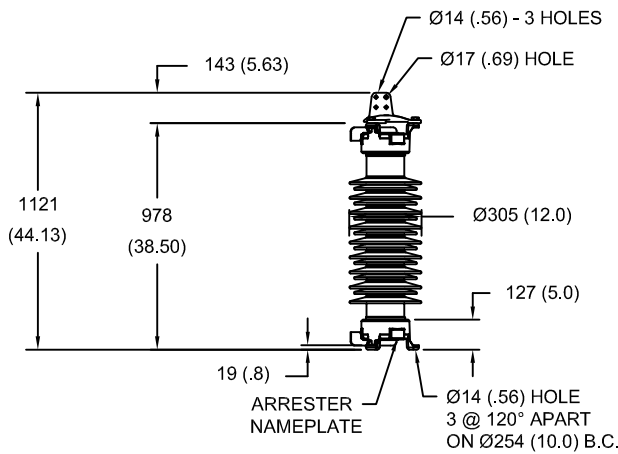


HDG 4-HOLE TERMINAL PAD, PART No. 901704001
 TWO HDG TERMINALS, PART No. 2714143001
 SUITABLE FOR Cu OR Al CONDUCTOR SIZE
 Ø 7 (.25) - Ø 21 (.81) DIA
 25 - 240 sq mm
 AWG#4 - 500 MCM

GROUND TERMINAL DETAIL



HDG TERMINAL BRACKET, PART No. 896064001
 ONE HDG TERMINAL, PART No. 2714143001
 SUITABLE FOR Cu OR Al CONDUCTOR SIZE
 Ø 7 (.25) - Ø 21 (.81) DIA
 25 - 240 sq mm
 AWG#4 - 500 MCM



- NOTES:
 1. DIMENSIONS IN millimeters(inches) SUBJECT TO ±3% TOLERANCE
 2. CLEARANCE AND INSULATION W/S VOLTAGE APPLY AT SEA LEVEL
 3. ARRESTER SUITABLE FOR OPERATION AT ALTITUDES UP TO 3650m (12000ft)

CHARACTERISTICS	
RATED VOLTAGE	96 kVrms
MCOV	76 kVrms
MASS	100kg (220lb)
CREEPAGE DISTANCE	2540 (100.0)
LIGHTNING IMP W/S	434 kV
SWITCHING IMP W/S	379 kV
POWER FREQ W/S	227 kVrms
TOV 1s	113 kVrms
TOV 10s	108 kVrms
COG ABOVE BASE	513 (20.2)
HOUSING	GREY PORCELAIN

CANTILEVER FORCE	
MAXIMUM CONTINUOUS	6067 N (1364lbf)
ULTIMATE (UMS)	15166 N (3409lbf)

RECOMMENDED CLEARANCE (TO METAL PARTS)	
PHASE TO GROUND	413 (16.3)
PHASE TO PHASE	481 (18.9)

DISCHARGE VOLTAGE (kV) FOR INDICATED IMPULSE TYPES AND CURRENT MAGNITUDES							
FRONT OF WAVE	SWITCHING SURGE	8/20 LIGHTNING IMPULSE					
		1.5 kA	3 kA	5 kA	10 kA	20 kA	40 kA
10 kA	0.5 kA	196	204	211	221	236	260
240	182	196	204	211	221	236	260

ANSI
 STATION CLASS
 SURGE ARRESTER
 Program Revision
 2011.05.26.12.28.00
 REV DATE **04/14/11**

CONFIDENTIAL: THIS DRAWING AND ITS CONTENTS ARE CONFIDENTIAL AND THE EXCLUSIVE PROPERTY OF HUBBELL POWER SYSTEMS. NO PUBLICATION, DISTRIBUTION OR COPIES MAY BE MADE WITHOUT THE WRITTEN CONSENT OF HUBBELL POWER SYSTEMS. HUBBELL POWER SYSTEMS UNPUBLISHED ALL RIGHTS RESERVED UNDER THE COPYRIGHT LAWS.

TITLE				MVN ARRESTER 76 KV MCOV			
SIZE	DWG NO.	CAT / PART / ASSY NO.		REV			
S	112562511	MVN096GA076AA		0			
DO NOT SCALE THIS DRAWING		DRN BY	NON	DATE	04/14/11	SHEET 1 OF 1	

