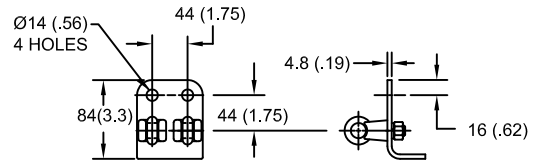
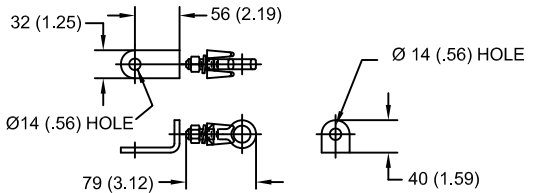


LINE TERMINAL DETAIL



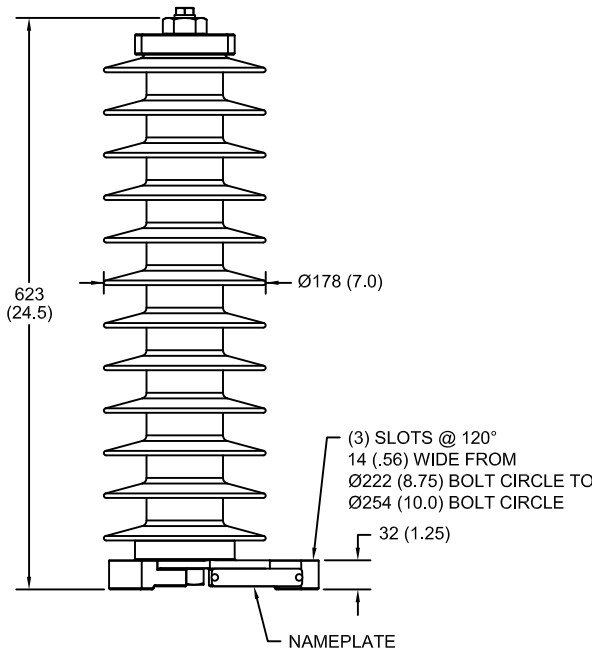
HDG 4-HOLE TERMINAL PAD, PART No. 274914-4002
 TWO HDG TERMINALS, PART No. 271414-3001
 SUITABLE FOR COPPER OR ALUMINUM CONDUCTOR SIZE
 Ø 7 (.25) - Ø 21 (.81)
 25 - 240 sq mm
 AWG#4 - 500 MCM

GROUND TERMINAL DETAIL



HDG TERMINAL BRACKET, PART No. 89606-4001
 ONE HDG TERMINAL, PART No. 271414-3001
 SUITABLE FOR COPPER OR ALUMINUM CONDUCTOR SIZE
 Ø 7 (.25) - Ø 21 (.81)
 25 - 240 sq mm
 AWG#4 - 500 MCM

Ø = DIAMETER
 HDG = HOT DIP GALVANIZED



CHARACTERISTICS

RATED VOLTAGE (Ur)	54 kVrms
MCOV (Uc)	42 kVrms
MASS	14.2 kg (31.2 lb)
COG ABOVE BASE	312 (12.3)
CREEPAGE DISTANCE	1562 (61.5)
STRIKE DISTANCE	546 (21.5)
LIGHTNING IMP W/S	313 kVpk
SWITCHING IMP WET W/S	263 kVpk
POWER FREQ WET W/S	148 kVrms
TOV 1s NO PRIOR DUTY	62.5 kVrms
TOV 10s NO PRIOR DUTY	59.8 kVrms
TOV 1s W/PRIOR DUTY	59.6 kVrms
TOV 10s W/PRIOR DUTY	56.3 kVrms

CANTILEVER FORCE

MAXIMUM CONTINUOUS	1601 N (360 lbf)
ULTIMATE (max pk)	3201 N (720 lbf)

RECOMMENDED CLEARANCE (METAL - METAL)

PHASE TO GROUND	231.4 (9.1)
PHASE TO PHASE	275.3 (10.8)

- NOTES:
 1. DIMENSIONS IN millimeters(inches) SUBJECT TO ±3% TOLERANCE
 2. CLEARANCE AND INSULATION W/S VOLTAGE APPLY AT SEA LEVEL
 3. ARRESTER SUITABLE FOR OPERATION AT ALTITUDES UP TO 4380 m (14370 ft)
 4. PACKAGED IN A CORRUGATED BOX.

.5µSEC 10kA IR kV	SWITCHING SURGE IR kV		MAXIMUM 8/20 DISCHARGE VOLTAGE - kV AT					
	500 A	1 KA	1.5 kA	3.0 kA	5 kA	10 kA	20 kA	40 kA
145	104	108	111	116	122	131	141	161

IEEE C62.11

STATION-CLASS
 SURGE ARRESTER

Program Revision
 2015.07.30.08.09.10

REV DATE **05/03/11**

CONFIDENTIAL: THIS DRAWING AND ITS CONTENTS ARE CONFIDENTIAL AND THE EXCLUSIVE PROPERTY OF HUBBELL POWER SYSTEMS. NO PUBLICATION, DISTRIBUTION OR COPIES MAY BE MADE WITHOUT THE WRITTEN CONSENT OF HUBBELL POWER SYSTEMS. HUBBELL POWER SYSTEMS UNPUBLISHED ALL RIGHTS RESERVED UNDER THE COPYRIGHT LAWS.

TITLE

**EVP ARRESTER
 42 KV MCOV**

SIZE	DWG NO.	CAT / PART / ASSY NO.	REV
S	181962406	EVP0042003001	1

DO NOT SCALE THIS DRAWING	DRN BY NON	DATE 05/03/11	SHEET 1 OF 1
---------------------------	------------	---------------	--------------