

EV•LED

FAMILY



Value
Performance
Design
Sustainability
Aesthetics



WWW.DUAL-LITE.COM



Value

Trusted Brand

- Extended product warranties
- Reduced maintenance costs
- Simplified installation

Performance

Sophisticated LED Based Lamp-head

- Offers 30% greater illumination than traditional incandescent lamps
- Indoor and Outdoor remotes offer superior light output
- Up to 83' spacing
- Optional damp, remote capacity and Spectron[®] self-test/self-diagnostics
- Longer lasting battery technology

Design

Ease of Installation and Maintenance

- Easy, quick installation
- Fully aimable, thermally controlled lamp-heads
- Long life-cycle LEDs rated at 100,000 hours
- Premium battery types offer up to 30% greater life-cycle than lead acid

Sustainability

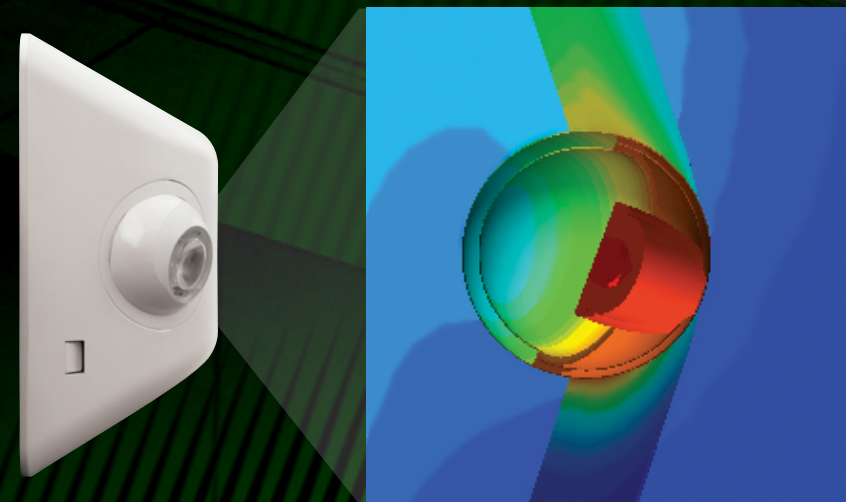
Our Future

- Up to 50% reduction in packing and plastic content
- Reduced input power requirements
- LED life-time warranty
- "Green" power sources

Aesthetics

Sleek Architectural Styling

- Integral LED lamp-heads
- Sleek, visually appealing
- Soft rounded contours and cloud-like appearance

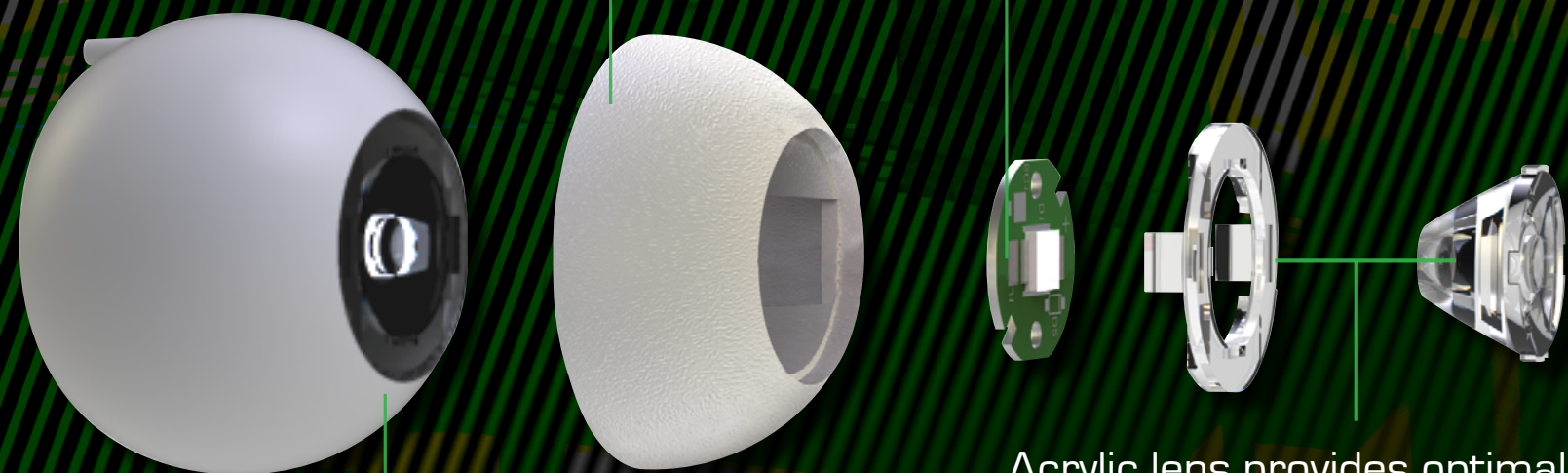


Thermal Management

The illustration shows the thermal effects of the LED and the heat dissipative qualities designed into the "eyeball".

Die-cast aluminum for thermal dissipation

LED offers cool white lamp color providing maximum light coverage with no hot spots



Acrylic lens provides optimal light transmission

Fully aimable lamp-head

Value Performance Design Sustainability Aesthetics



EVE
LED Exit Sign

- Architectural, cloud-like housing with thin profile
- Long-Life Nickel Metal Hydride battery
- 10 year LED lifecycle
- Universal wall, end or ceiling mount with canopy



EVC
LED Combination Exit/Emergency Light

- Fully aimable, dual-ratcheting high output LED lamp-heads
- No-head option for up to 4 LED remotes
- Wall, ceiling or end mounting options
- Long life-cycle Lithium Iron Phosphate battery



EV
LED Emergency Light

- Fully aimable optics providing up to 27' spacing
- High output LEDs provide uniform light patterns
- Capacity for single or double remotes
- "Green" Nickel Metal Hydride battery



EV4R
Recessed Ceiling-Mount Indoor LED

- Up to 42' spacing
- Compact, low-profile design
- Rectangular or round trim-plate in white or black finish
- 30% greater battery life and Lifetime LED Warranty



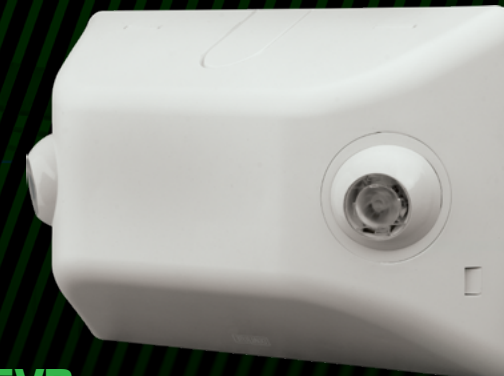
EV4D-02WAL
Architectural LED Emergency Light

- Optimized lighting pattern offering 50' spacing at 7.5' mounting height
- High power LED's offer 248 lumens per lamp
- Adjustable lamp-heads optimize lighting pattern at various mounting heights
- Environmentally friendly Nickel Metal Hydride Battery



EVHC
High Lumen LED Emergency Light

- Designed for mounting heights from 9-20 feet
- High lumen option exceeds 50W halogen lamp
- Lithium Iron Phosphate battery offers 30% greater life
- Lifetime warranty for LEDs



EVR
Indoor LED Remote

- Fully aimable optics providing up to 27' spacing
- High output LEDs provide uniform light patterns
- 50% less plastic than traditional remote units
- Wall or ceiling mounting options



EVO
Outdoor LED Remote

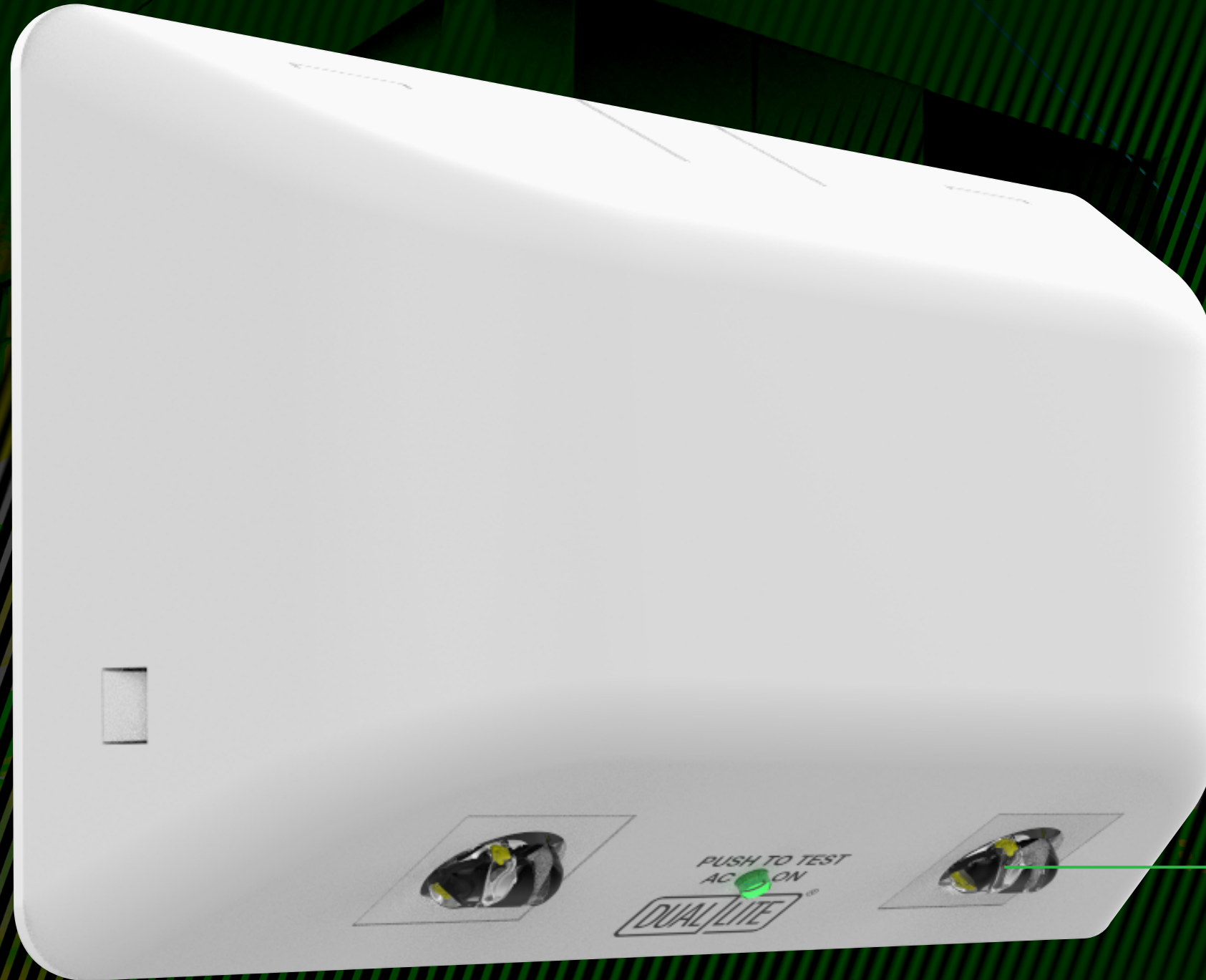
- Fully aimable single or double lamp-head
- Can be located up to 50' from external power source
- Durable Die-Cast aluminum lamp housing and mounting plate

EV4D-02WAL SERIES

Architectural LED Emergency Light

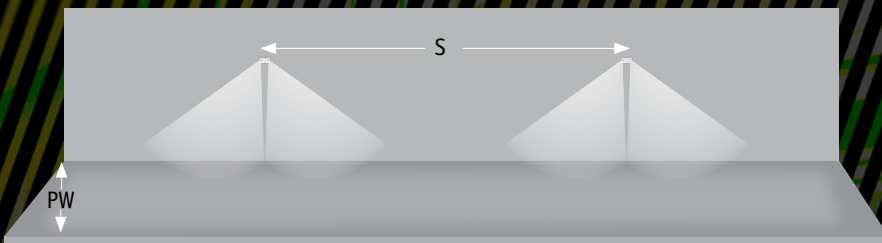
- Intelligent 2-wire input connection
- External PUSH TO TEST switch and AC ON indicator
- Battery recharge within 24 hours
- AC Lockout circuit
- Low voltage disconnect
- Conduit entry knockout located at the top center
- Microprocessor controlled pulse charger

Adjustable lamp-heads offer optimized light pattern for mounting from 7.5' - 12'



Special lens optimizes spacing to **50'** at a 7.5' mounting height

Multi-Unit Spacing



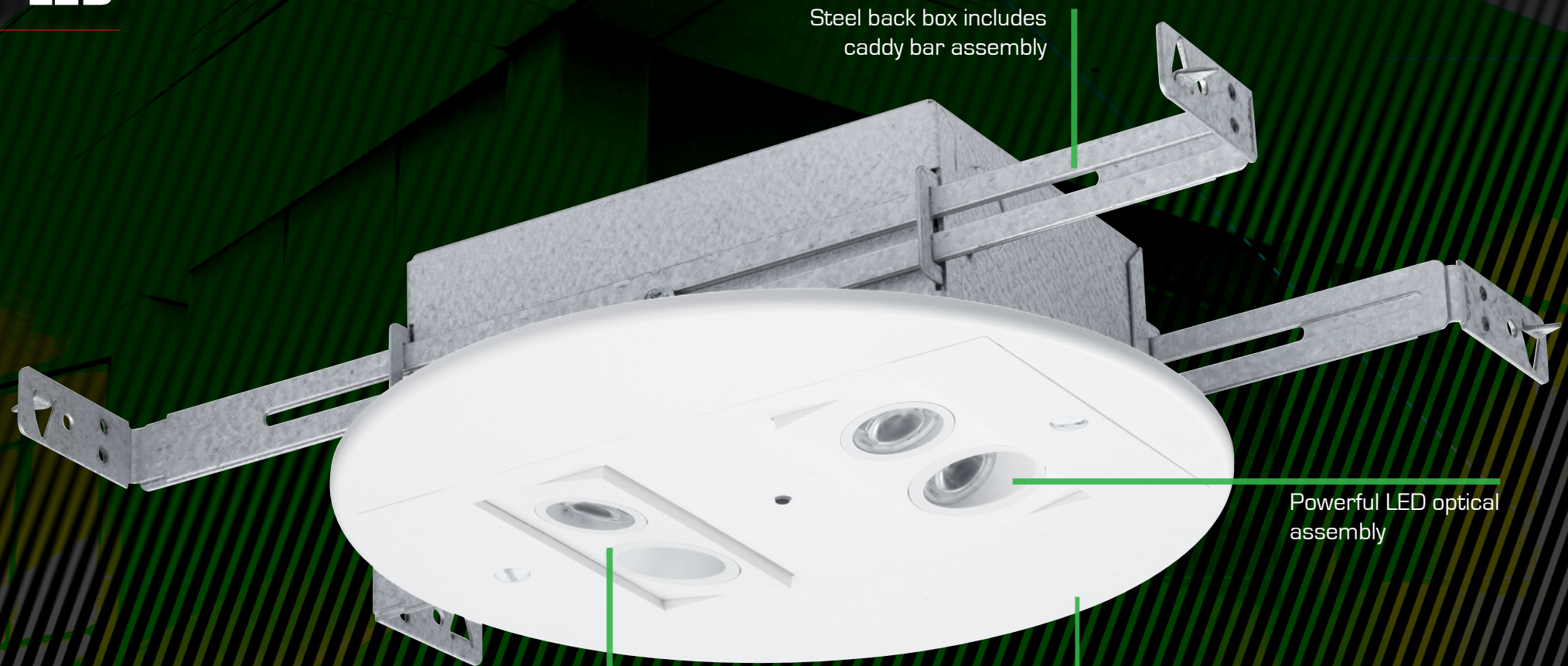
2W Wide Area Lens		
Mounting Height	Path Width (PW)	Spacing (S)
7.5'	6'	50'
10'	6'	41'

Notes:
Meets Life Safety Code minimum illuminance of 0.1 fc and average illuminance of 1.0 fc.
Assumes open space with no obstructions, wall mounting height shown in above table,
ceiling mounting height shown in above table and reflectances of 80/50/20.
Photometry files available on the Dual-Lite web site (www.dual-lite.com).

EV4R SERIES

Recessed Ceiling-Mount Indoor LED

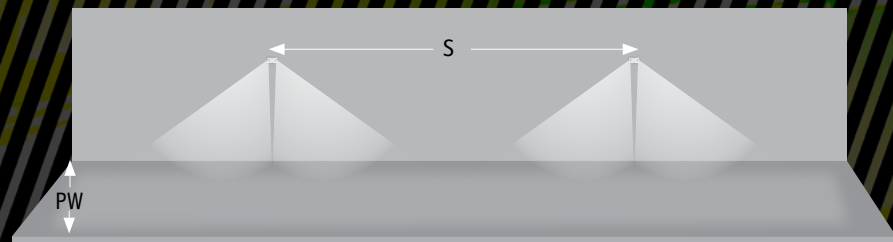
- Recessed to 0.20" reveal
- Lowprofile
- Architectural recessed ceiling mount, emergency light with superior emergency lighting coverage
- Flame-rated, UV stable thermoplastic housing
- Choice of round or rectangular trim-plate in white or black finish
- 4 LEDs housed within an aluminum heat-sink and adjustable optic assembly
- Individual LEDs are driven at 1 watt each for 88 lumens per LED
- UL924 damp location listed
- IC Rated



Includes rectangular or round trim plate



Multi-Unit Spacing



Path Width (PW)	Spacing (S)	Mounting Height
6'	42'	9'

Meets Life Safety Code minimum illuminance of 0.1 fc and average illuminance of 1.0 fc. Assumes open space with no obstructions, ceiling height of 9' and reflectances of 80/50/20. Photometry files available on the Dual-Lite website (www.dual-lite.com).

Multi-Unit Coverage



EVR Indoor LED Remote
 Doubles the Spacing
 Powered by Combo or Unit
 LED Lifetime Warranty



EV LED Emergency Light
 Spacing Up To 27'
 -O2L Option Increases Spacing to 39' (3' path)
 LED Lifetime Warranty



EVC LED Combination Exit/Emergency Light
 Coverage of 16' X 10'
 Fully Adjustable Integral LED Heads
 No-Head Option Runs 4 Remotes
 LED Lifetime Warranty



EV4R Recessed Ceiling-Mount Indoor LED
 Up to 42' spacing
 Compact, low profile design
 Rectangular or round trim-plate in white or black finish
 30% greater battery life and Lifetime LED Warranty



EVHC High Lumen LED Emergency Light
 Bright, even illumination for mounting from 9-20 feet
 Best in Class Spacing performance
 Available with remote capacity and matching remote

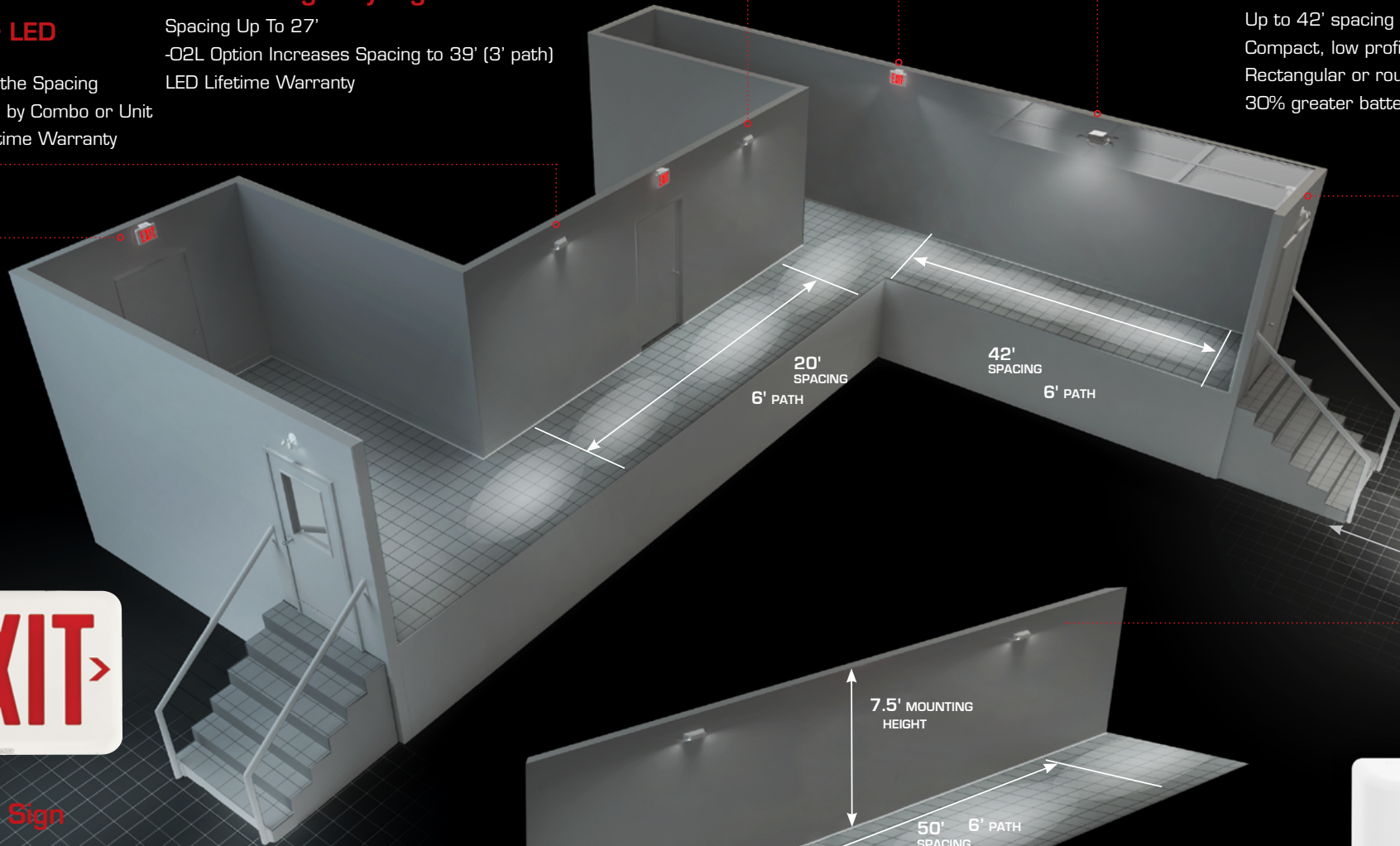
SINGLE UNIT COVERAGE

The below illustration provides an example of **Side-to-Side** or **Forward Throw** configurations.

Wall Mounted
 (Single Unit Coverage - 1 FC Avg)
 Commercial Parameters R=80/50/20

	EVHC12-06L	EVHC-03L
Ceiling Height	15'	12'
Mounting Height	12'	9'
Max Spacing 6' Path	66'	48'
Max Forward Throw 10' Path	43'	34'

The EVHC Series meets proposed California Energy Commission(CEC) requirements for limits on power consumption in maintenance mode with less than 0.5 watts.



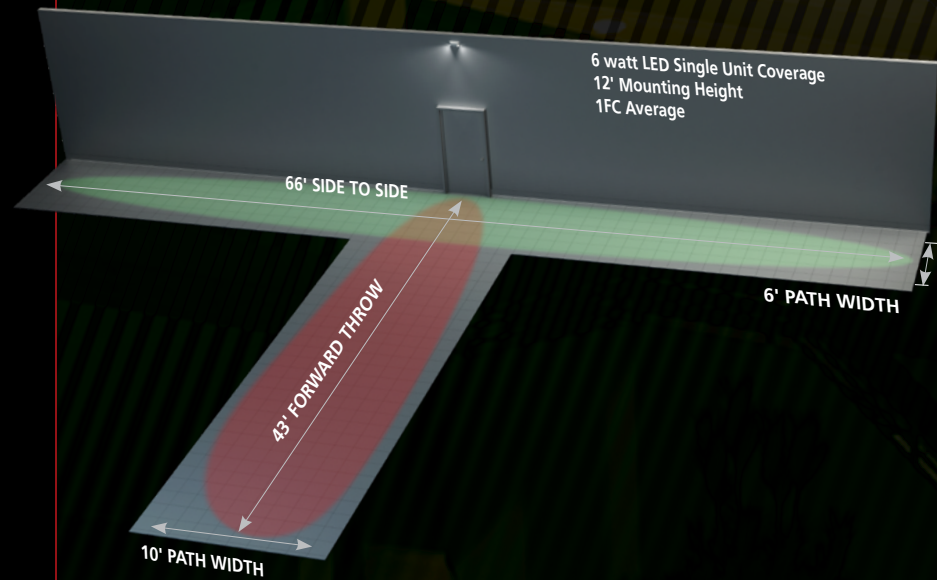
EVO Outdoor LED Remote
 Sealed and Gasketed for Outdoor use
 Matching Long-Life LEDs
 Powered by Combo or Unit
 LED Lifetime Warranty



EVE LED Exit Sign
 Bright Panel Face Illumination
 10 Year LED Lifecycle
 Long-Life NiMH Battery



EV4D-02WAL LED Emergency Light
 50' Multiple unit spacing
 Adjustable lamps for mounting up to 12'
 LED Lifetime Warranty





ALERA LIGHTING

ARCHITECTURAL AREA LIGHTING

BEACON PRODUCTS

COLUMBIA LIGHTING

COMPASS

DUAL-LITE

HUBBELL CONTROL SOLUTIONS

HUBBELL INDUSTRIAL LIGHTING

HUBBELL OUTDOOR LIGHTING

KIM LIGHTING

KURT VERSEN

LITECONTROL

PRESCOLITE



701 Millennium Blvd. Greenville, SC 29607

Tel 864.678.1000

www.dual-lite.com

DL December 6, 2018 2:36 PM

Copyright © 2018 *Dual-Lite*, a division of Hubbell Lighting, Inc. All rights reserved. Please refer to online specifications for most up-to-date content as specifications are subject to change without notice.