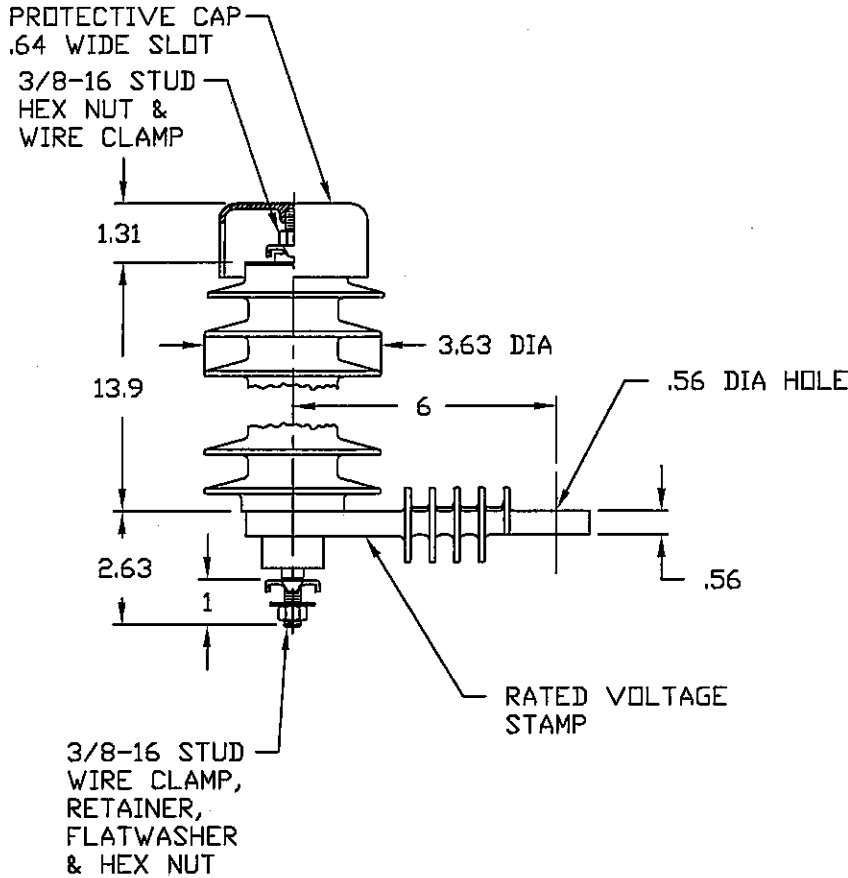


NOTES:

1. DIMENSIONS SUBJECT TO +/- 3% TOLERANCE
2. LEAKAGE DISTANCE (Inches) - 40.9
3. ALTITUDE 0-12000 FT. ABOVE SEA LEVEL
4. WEIGHT OF UNIT INCLUDING HARDWARE - 7.8 LB.
5. MAXIMUM CONTINUOUS LINE-TO-GROUND OPERATING VOLTAGE 22.0 KV MCOV
6. DUTY CYCLE VOLTAGE RATING 27 KV RMS.



.5μ SEC 5kA IR kV	500 A SWITCHING SURGE IR kV	MAXIMUM 8/20 DISCHARGE VOLTAGE - kV AT					
		1.5 kA	3.0 kA	5 kA	10 kA	20 kA	40 kA
96.4	71.2	76.9	82.6	87.5	97.2	111.5	135.6

DISTRIBUTION CLASS SURGE ARRESTER							
	CONFIDENTIAL: THIS DRAWING AND ITS CONTENTS ARE CONFIDENTIAL AND THE EXCLUSIVE PROPERTY OF HUBBELL POWER SYSTEMS. NO PUBLICATION, DISTRIBUTION OR COPIES MAY BE MADE WITHOUT THE WRITTEN CONSENT OF HUBBELL POWER SYSTEMS. HUBBELL POWER SYSTEMS UNPUBLISHED ALL RIGHTS RESERVED UNDER THE COPYRIGHT LAWS.		TITLE PDV-65 ARRESTER 22.0 KV MCOV				
	REV DATE	10/24/07	SIZE	DWG NO.	CAT / PART / ASSY NO.	REV	
		S	ALES7XXX	213272-7314	7		
		DO NOT SCALE THIS DRAWING		DRN BY ENG112	DATE 06/17/00	SHEET 1 OF 1	