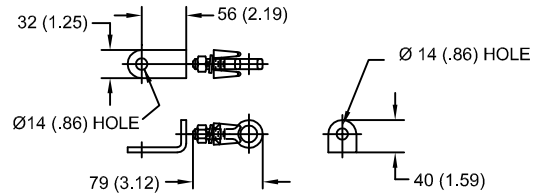
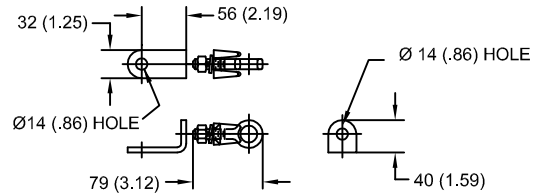


LINE TERMINAL DETAIL



HDG TERMINAL BRACKET, PART No. 89606-4001  
ONE HDG TERMINAL, PART No. 271414-3001  
SUITABLE FOR Cu OR Al CONDUCTOR SIZE  
Ø 7 (.25) - Ø 21 (.81) DIA  
25 - 240 sq mm  
AWG#4 - 500 MCM

GROUND TERMINAL DETAIL



HDG TERMINAL BRACKET, PART No. 89606-4001  
ONE HDG TERMINAL, PART No. 271414-3001  
SUITABLE FOR Cu OR Al CONDUCTOR SIZE  
Ø 7 (.25) - Ø 21 (.81) DIA  
25 - 240 sq mm  
AWG#4 - 500 MCM

CHARACTERISTICS

RATED VOLTAGE	10 kVrms
MCOV	8.4 kVrms
MASS	6.8 kg (15.0 lb)
COG ABOVE BASE	150 (5.9)
CREEPAGE DISTANCE	765 (30.1)
STRIKE DISTANCE	221 (8.7)
LIGHTNING IMP W/S	127 kVpk
SWITCHING IMP W/S	106 kVpk
POWER FREQ 60Hz W/S	63 kVrms
TOV 1s NO PRIOR DUTY	11.9 kVrms
TOV 10s NO PRIOR DUTY	11.4 kVrms
TOV 1s W/PRIOR DUTY	11.6 kVrms
TOV 10s W/PRIOR DUTY	11.1 kVrms

CANTILEVER FORCE

MAXIMUM CONTINUOUS	2974 N (669 lbs)
ULTIMATE (max pk)	5947 N (1337 lbs)

RECOMMENDED CLEARANCE (CENTER - CENTER)

PHASE TO GROUND	114 (4.5)
PHASE TO PHASE	229 (9.0)

NOTES:

1. DIMENSIONS IN millimeters( inches) SUBJECT TO ±3% TOLERANCE
2. CLEARANCE AND INSULATION W/S VOLTAGE APPLY AT SEA LEVEL
3. ARRESTER SUITABLE FOR OPERATION AT ALTITUDES UP TO 1800 m (6000 ft)
4. PACKAGED IN A CORRUGATED BOX.

.5µSEC 10kA IR kV	SWITCHING SURGE IR kV		MAXIMUM 8/20 DISCHARGE VOLTAGE - kV AT					
	500 A	1 KA	1.5 kA	3.0 kA	5 kA	10 kA	20 kA	40 kA
29.4	19.8	20.6	21.1	22.2	23.3	25.0	27.0	30.8

ANSI

STATION CLASS  
SURGE ARRESTER

Program Revision  
2011.06.7.12.40.56

REV DATE **05/03/11**

CONFIDENTIAL: THIS DRAWING AND ITS CONTENTS ARE CONFIDENTIAL AND THE EXCLUSIVE PROPERTY OF HUBBELL POWER SYSTEMS. NO PUBLICATION, DISTRIBUTION OR COPIES MAY BE MADE WITHOUT THE WRITTEN CONSENT OF HUBBELL POWER SYSTEMS. HUBBELL POWER SYSTEMS UNPUBLISHED ALL RIGHTS RESERVED UNDER THE COPYRIGHT LAWS.

TITLE

**EVP ARRESTER  
8.4 KV MCOV**

SIZE	DWG NO.	CAT / PART / ASSY NO.	REV
S	11209742	EVP000900-3002	0
DO NOT SCALE THIS DRAWING	DRN BY PRO	DATE 05/03/11	SHEET 1 OF 1



**HUBBELL® POWER SYSTEMS**